

# AUCTION SALE

## WEDNESDAY, OCTOBER 30, 2024

AT 10:00 A.M.

# *Inverted Centers of the World*

## UNITED STATES

### 1869 Pictorials



2501 ○

15c brown and blue, type II, Center Inverted, rich colors and proof-like impressions, rosette cancel struck towards top leaves, with vignette clearly visible, centered slightly to left but perfs are well clear all around, v.f. and attractive copy, with 2004 PFC.

*Only 103 used examples of the 15 cent 1869 Pictorial invert are recorded in the Siegel census. Of those, only 12 are confirmed to be sound, few with perforations clear all around. This example is considered to be one of the top four or five in existence. (Scott catalogue notes: "most examples of No. 119b are faulty. Values are for fine centered examples with only minimal faults), ex-Sagar, cat. \$22,500*

.....(119b) 15,000.00



2502 P 15c, 24c, 30c and 90c, Centers Inverted, four plate proofs on card, fresh bright colors, strong proof impressions and well balanced margins all around, v.f. set of the Pictorial Inverts on card, only 100 printed, with individual 2018 PFCs, cat. \$11,000 ..... (120P4a-122P4a,129P4a) 10,000.00



- 2503 ○ 24c green & violet, Center Inverted, light cork cancel and trace of a red transit pmk at upper left, leaving the entire design clearly visible, well centered, with excellent perforations all around, v.f. and completely sound example of the 24c Pictorial invert, easily one of the finest in existence, with 1988 and 2002 PFCs.

*The Siegel census of 24c 1869 Inverts, contains four unused, 83 used singles, one used pair, one on cover and the unique block of four, for a total of 94 copies. Of these, only five qualify as "centered" and of those four are either reperforated or have margins added. The stamp offered here is both sound and centered (Census No.120b-CAN-63), ex Cole, Koppersmith, McKinney and Natalee Grace (Siegel Auctions September 2012, \$40,000 hammer) cat. \$37,500.....*

.....(120b) 30,000.00



2504 ○ 30c ultramarine & carmine, Flags Inverted, neat circle of V's and French Calais & Carmine, Flags Inverted (121b). Choice centering, radiant colors, crisp impression, neat circle of V's cancel and also French Calais transit cds, incredibly well centered, with large margins all around, especially wide at top and bottom, radiant colors, small margin repair at upper right which is barely noticeable. A splendid stamp, v.f. appearance, with 2010 PFC.

*The Siegel census of 30c 1869 Inverts contains a total of 47 stamps, including 7 unused and 40 used (one in the Miller collection owned by The New York Public Library and one used in the Tapling collection at the British Library). Most have faults to varying degrees. Of the examples available to collectors, only 13 are sound or potentially sound (six are based on decades-old descriptions and need to be re-examined for condition). The stamp offered here is one of five recorded "Wide-Space" examples (Census 121b-CAN-WS01), ex-McKinney, Gordon Eubanks (Siegel Auctions, Mar 2011, \$55,000 hammer) cat. \$90,000 .....(121b) 45,000.00*



## 1901 Pan-American Exposition



- 2505 ★ 1c green & black, Center Inverted, relatively l.h., unusually well centered for issue, fresh and v.f. example of this popular invert, with 2002 PFC and 2009 PSE certificates, cat. \$12,500.....(294a) 5,000.00



- 2506 ○ 1c green & black, Center Inverted, used, relatively light pmk, well centered, shallow thin spots, with 1971 and 2007 PFCs, fine appearance of the 1 Cent Pan-American Invert. Siegel census records 56 used examples, including 48 singles, a pair, 3 stamps on pieces and 3 stamps on separate covers (Census no. 294a-CAN-32), cat. \$25,000 .....(294a) 5,000.00



- 2507 ★ 2c carmine & black, Center Inverted, unused with original gum, bright colors, centered to left, small thin and a corner crease at top left, fine appearance, with 1979 PFC.

*The 2c inverted Train is the rarest of the three Pan-American Inverts. About 200 were issued through the post office, with two distinct shades known. Siegel records an intact block (4), reconstructed block (4) and 64 unused singles for a total of 72 unused. There are also seven used singles. Many of the unused singles have disturbed gum or no gum, and/or are off center to top or top left, cat. \$50,000 .....*

*(295a) 15,000.00*



2508 ★

4c deep red brown & black, Center Inverted, unused with full original gum, h.r., incredibly bright and fresh colors, centered just slightly to the bottom, far better centering than most existing examples, superior quality, among the finest available, without the usual gum problems that plague this issue, with 1960 and 2009 PFCs.

*There were two sheets of 100 each of the 4c Pan-American with centers inverted intentionally made for Post Office records. An unknown number of these were overprinted "Specimen" and still others were destroyed. The unoverprinted examples were mounted in a Post Office Department book resulting in the vast majority of them having disturbed gum, and a number were also thinned in an effort to remove them from mounting paper. Very few exist today with completely undisturbed original gum and/or free of faults. This example is accompanied by a 1960 PFC which states the stamp has "disturbed gum". It is easy to agree with the written notations on the certificate by the legendary dealer Jack Molesworth who writes "Ridiculous comment, probably the most undisturbed gum of any copy known - most of which have gum missing, thinned, etc. from being stuck down." (the stamp was resubmitted to the Philatelic Foundation, which issued a certificate in 2009 "It is genuine, previously hinged" (the catalogue value in Scott is for examples that have "full original gum that is slightly disturbed.") (a comparable example recently fetched \$60,000 hammer in the June Siegel auction) cat. \$85,000.....(296a)*

50,000.00

## 1979 "CIA" Invert



2509 ★★

\$1.00 Rush Lamp & Candle Holder, intaglio brown color inverted, n.h., v.f., with 2001 APS certificate. (The popular "CIA invert" is one of the most well known inverted color errors in United States collecting. These stamps were discovered by an on-duty CIA employee who teamed up with some colleagues to purchase the pane from a post office. Saving a copy each, the group later sold the bulk of the sheet to a prominent stamp dealer. News of the error reached CIA officials who sought to claim ownership and US Postal authorities who tried to recover the stamps. Official queries, threats, and even job losses followed the group until the sale of the pane was ruled legal. Of that pane of 100, only 93 reached collectors and did not include a plate block. Recently, a block of 20 from a second pane has emerged), ex-Sagar, cat. \$17,000 .....(1610c)

12,000.00

## "Stock Exchange" Invert



2510 ★★

1992 29c New York Stock Exchange Bicentennial, Center Inverted, n.h., v.f., with 2008 PSE certificate, graded "VF-XF85". (Two panes containing this invert error were discovered, for a total of 56 examples recorded. The bottom rows of each pane have the black completely missing (twelve stamps) as the vignettes for these were printed off the top of the sheet) cat. \$17,000 .....(2630c)

8,500.00

## The "McCoy" Inverted Jenny



- 2511 ★ 1918 24c carmine rose and blue, Center Inverted, position 75, original gum, well centered, small tear at left, thin spots at top, few blunt perfs (the latter not mentioned on the accompanying certificates), v.f. appearance, with 1982 and 2001 PFCs.

*This stamp is the lower left copy from the famous "McCoy Block" belonging to Ethel B. McCoy, which was stolen at the APS convention on September 23, 1955. Originally purchased by William T. Robey in 1918 (as a sheet of 100 from a Washington D.C. post office), the block was later owned by Arthur Hind, the Scott Stamp and Coin Co., Spencer Anderson and then Ethel McCoy (nee Stewart). Mrs. McCoy was reimbursed \$15,000 by her insurance company and the rights of the block were sold to the American Philatelic Research Library. The block was never seen again intact, but this stamp appeared in 1958 when it was offered to the Weill brothers in New Orleans. The FBI was notified but it did not meet the minimum value for them to get involved. It then resurfaced in 1977 when it was submitted to the Philatelic Foundation for expertising. This time the FBI did get involved and after its recovery and custody battle, Mrs. McCoy donated the stamp to the American Philatelic Research Library. It was sold in 1981 on behalf of APRL at the APS Convention in Atlanta by John Kaufmann to Dr. Joseph Kurtzman, who sold it through Siegel to its current owner in 2001. A wonderful stamp with a fascinating story, cat. \$450,000.....(C3a) 100,000.00*

## Revenue Stamps



- 2512 ○ 1871 1c blue & black, Center Inverted, small faults, probably caused by herringbone cut cancel, unusually well centered, appears unused, cat. \$750.....(R103a) 250.00



- 2513 ○ 1871 2c blue & black, Center Inverted, manuscript cancel, usual centering, with 2007 PFC, rare complete sound invert (Scott catalogue value should probably be \$6,000, as the cut cancel is listed at \$3,500) cat. \$2,500 .....(R104a) 1,500.00



- 2514 ○ 1871 5c blue & black, Center Inverted, manuscript cancel, nicely centered, small thin, otherwise fine, with 2011 PSAG certificate (Scott catalogue value should probably be \$4,000, as the cut cancel is listed at \$2,500) cat. \$2,000 .....(R107a) 500.00



- 2515 ○ 1871 10c black & blue, Center Inverted, handstamped and with herringbone cut cancels, fresh colors, with 1978 PFC, ex-Baron du Plussis (catalogued as cut cancel) cat. \$1,250 .....(R109a) 250.00



- 2516 ○ 1871 20c blue & black, Center Inverted, herringbone cut cancel which has been treated with some white filler in places where it breaks the paper, thin spot at right, well centered, v.f. appearance. Only thirteen singles and a pair have been recorded, of which only two are sound. A footnote in Scott states "R111a is valued in the grade of fine and with small faults, as almost all examples have faults". A rare invert, ex-Robert Hall collection (Siegel Auctions, Apr 2015, \$6,000 hammer) cat. \$4,000 .....(R111a) 3,000.00



- 2517 ○ 1871 25c blue & black, Center Inverted, 1872 manuscript cancel, well centered for issue, with three large margins, tiny thin speck at bottom, not mentioned on the accompanying 1983 PFC, which notes "genuine with the vignette faded", v.f. appearance of this rare invert, less than 18 (!) recorded, virtually all with faults or repairs, cat. \$13,000 .....(R112a) 3,500.00





- 2518 ○ 1871 50c blue & black, Center Inverted, appears unused, minor wrinkles, fine, cat. \$400.....(R115a) 250.00



- 2519 ○ 1871 70c blue & black, Center Inverted, light 1871 datestamp in blue, herringbone cut cancels with some reinforcing, well centered, v.f. appearance for this scarce invert, only 27 examples recorded, ex-Curtiss collection (Siegel Auctions Dec 2014, \$3,500 hammer) cat. \$1,750.....(R117a) 750.00



- 2520 ○ 1871 \$1 blue & black, Center Inverted, 1872 manuscript cancel, centered to left, bright colors, tear at top, creases and large thins (having been removed from a document), fine appearance, with 2007 PFC, cat. \$6,000 .....(R118a) 1,000.00





- 2521 ○ 1871 \$5 blue & black, Center Inverted, "1872" manuscript cancel, well centered, bright colors, small tears at upper left and a tiny marginal thin at lower left, v.f. appearance of this scarce invert, especially well centered, with 2007 PFC, cat. \$3,750 .....(R127a) 1,000.00



- 2522 ○ 1871 2c orange & black, Center Inverted, herringbone cut cancels, fresh and well centered stamp, looks unused, cat. \$300 .....(R135b) 200.00



- 2523 ○ 1871 15c brown & black, Center Inverted, faint blue and cut cancels, rich colors, centered to bottom right as nearly always, fine example of this rare invert, only thirteen singles and one pair have been recorded, approximately half with cut cancels, nearly all have faults and most are centered to one corner, cat. \$9,000 .....(R139a) 3,000.00



- 2524 ○ 1871 30c orange & black, Center Inverted, blue handstamp and cut cancel, small thin spot, well centered, fine appearance, with 1987 PFC, cat. \$1,750 .....(R140a) 500.00



- 2525 ○ 1871 Third Issue, \$1 green & black, Center Inverted, light cut cancels, minor creases, bright colors and v.f. appearance of this rare Third Issue \$1 invert, only 27 recorded, most of which are with faults. The example offered here looks unused, with nice centering and with minimal faults. A wonderful U.S. Revenue rarity, ex Cunliffe and Curtiss collections (Siegel Auctions, Dec. 2014, \$15,000 hammer) cat. \$10,000 .....(R144a) 5,000.00



- 2526 ○ 1871-72 \$2.50 claret and black, Center Inverted, 1872 manuscript cancel, fairly well centered with fresh color, small repair at right, still quite an acceptable copy of this rare invert of which there are only 15 recorded, with 1983 PFC, cat. \$22,500 .....(R146a) 10,000.00



- 2527 ○ 1874 2c orange & black on green paper, Center Inverted, manuscript "1865" cancel, tiny thin spot, well centered, fine appearance, cat. \$800 .....(R151a) 300.00

## UNITED STATES POSSESSIONS

### Canal Zone



- 2528 ★ 1907 1c green and black, Center and "Canal Zone" Inverted, nicely centered with fresh colors, usual tropicalized original gum, light h.r. and small adhesion, v.f. Only 22 mint examples exist from the original sheet of 100, as 78 were used on mail before the error was discovered by a local philatelist named Elmer Ohlson, with 2002 PFC, ex-Helme, Sagar, cat. \$3,750 .....(22g) 1,500.00



- 2529 ○ 1907 2c carmine red and black, Center Inverted and "Canal Zone" reading up, used, bright color, small tear and minor creasing, otherwise fine, with 2004 Philatelic Foundation Certificate. This is one of Canal Zone's greatest rarities, Only nine copies are recorded, all used, including one on cover, all of which are faulty to some degree. Apparently only one sheet was printed and went undetected until first reported in 1911, ex-Sagar, cat. \$6,000.....(23g) 3,000.00



- 2530 ○ 1909 1c dark green and black, Center Inverted and “Canal Zone” reading down, a magnificent used example of one of the most famous of all of the Canal Zone errors, only four copies (all used), exist (the first example of this error was discovered in 1932 (23 years after issue) by George W. Wirth, who removed it from a postcard sent by a gentleman to his sister. The second example (with clipped perforations at left) was found in the 1950s. A third (badly defective) copy turned up in 1969). The example offered here, the last of the four known, was discovered in 1979 and is by far the best centered of the four. It is on bright paper, with deep rich color, with violet Cristobal cds. The perforations at right are scissor separated, typical of the handmade booklet panes, which is also a trait of the other three examples, making it likely that the error sheet was produced in this way. A faint crease, not mentioned on the accompanying 2004 PFC, does not detract from this most attractive example of this world class inverted center rarity, ex-Helme, Sagar, cat. \$22,500 .....(31a) 15,000.00



- 2531 ★ 1912 6c vermilion and black, Center Inverted, small h.r., fine, with photocopy of 1970 APS certificate, cat. \$650 .....(39e) 250.00

# WORLDWIDE INVERTED CENTERS

## ALGERIA



- 2532 ★ **Semi-Postals.** 1930 5fr+5fr green and carmine, Center shifted and Inverted, l.h., v.f., signed Brun (YT 99a, €1,000) cat. \$750 .....(B26a) 400.00

## ARGENTINA



- 2533 ★ 1899 1p blue & black, center inverted, h.r., usual brownish gum, fresh and well centered, deep colors, signed Behr, etc., v.f., with 2008 Pascal Scheller certificate, cat. \$2,000 .....(139a) 1,000.00



- 2534 ★ 1899 5p orange and black, center inverted, l.h. (if at all), centered to top, fine and rare stamp, only 50 printed, handstamped guarantee marks, cat. \$2,750 .....(140a) 1,200.00





- 2535 ★/★★ 1910 Centenary, ½c-5p inverted centers, the complete set (as issued) of seven, all but one with sheet margin, lightly hinged, couple n.h., well centered and post office fresh, v.f., signed Kneitschel, etc., with Alberto Solari certificates. A very rare set of invert (YT 148/59var) cat. €6,300 .....(160a/173a) 5,000.00



- 2536 ★ 1917 San Martin, 20p blue & claret, center inverted, l.h., with 2002 Philatelic Foundation Certificate, ex-Sagar. Only 50 issued, all off centered (Kneitschel 312a "todos los ejemplares de esta hoja unica son descentrados") (YT 227a) cat. €1,400 .....(246a) 750.00

### AUSTRIA



- 2537 ★ 1919 Parliament Building, 2k vermillion and black, Center Inverted, perfectly centered with wide, even margins, beautiful color, small h.r., fresh and v.f., signed Mueller, with 1967 Friedl certificate. A rarity, especially in such beautiful condition, (ANK 284D, €4,000) cat. \$2,750 .....(219a) 2,500.00



- 2538 ★ 1919 Parliament Building, 4k carmine & black, Center Inverted, l.h. (if at all), v.f. (ANK 287D, €2,000) cat. \$2,100 .....(222a) 1,500.00



- 2539 ○ 1919 Parliament Building, 20kr violet gray & lilac brown, Center Inverted, neat postmark (Wien) and well centered, excellent colors, with usual irregular perforations at bottom, slightly improved at left, otherwise v.f., one of the finest of the less than 15 (!) known, with 2010 Soecknick certificate which confirms that practically all known examples of this great Austrian rarity have defective perforations (they were carelessly torn by hand) (ANK 291D, €40,000) cat. \$40,000 .....(226a) 15,000.00

### BELGIAN CONGO



- 2540 ★ 1895 Stanley Falls, 10c greenish blue and black, center inverted, compound perforation 14:13½, bright colors, well centered for this difficult issue, h.r., fine, signed Roger Calves, with 1998 BPA certificate (COB 18Bvar; unlisted as compound perforation) cat. €2,500 .....(18a) 1,500.00

## BOLIVIA



- 2541 ★★ 1909 Portraits, 10c, 20c and 2b set of three, each with center inverted, n.h., fine-v.f. ....(79-81var) 150.00



- 2542 ★/★★田 1916 Legislature Building, 10c orange & blue, Center Inverted, block of four, l.h. at left, right stamps n.h., v.f. (catalogued as hinged singles) cat. \$800 .....(116c) 250.00



- 2543 ★ **Air Post.** 1924 10c vermilion & black, Center Inverted, l.h., fine, signed Sanabria, Irwin Heiman, etc., with Calves certificate. A rare stamp, only 50 issued, cat. \$2,500 .....(C1a) 1,500.00



## BRAZIL



- 2544 ★○ 1891 100r blue & red, frame inverted, four unused singles, part original gum, h.r., also two used singles, various shades and perforation varieties, mostly fine or better, ex-Cunliffe, cat. \$920 (109a) 300.00

## BULGARIA



- 2545 ○ 1911 50s ochre and black, Center Inverted, canceled Plovdiv June 13, 1913, v.f., signed Herbert Bloch, Karaivanoff and Mikulski, with their 1935 and 1985 certificates. This major error occurred as the bicolored set was printed first in one color and then passed through the press again for the second time. While a premier rarity of Bulgarian philately, this error actually went unnoticed by the public for seven years, the first example being discovered in 1918 by a Nicola Kochanov in Sofia. All of the known (only about 30) examples are used (Mi.86K, €7500) cat. \$4,250.....(97a) 4,000.00

## CHILE



- 2546 ★ 1916 10c blue & black, type II, Center Inverted and shifted downwards, usual centering, heavy h.r., rare (YT 113a, €600) .....(131c) 150.00



- 2547 ★★田 **Postage Dues.** 1924 2c-5p numerals, two of last, left sheet margin se-tenant block of 12, centers inverted, n.h., fine-v.f., with 2008 APS certificate. A scarce multiple, only a handful intact se-tenant blocks exist, .....(J48-58var)

600.00

## COSTA RICA



- 2548 ★(★) 1907 1c, 2c, 5c (two copies, one with center shifted to bottom), 50c, 2col and 2col Waterlow Issue, each with Center Inverted, 2c unused without gum, others h.r., minor faults (2c repaired upper left corner, 50c small thin, 5c some toned gum), otherwise fine-v.f., extremely rare "set", only a few of each exist, accompanied by a 2016 Brian Moorhouse certificate for the group, ex-Mayer collection (last offered in 2016 H.R. Harmer sale, Lot 31, \$25,000 hammer) .....(59/68var)

15,000.00



- 2549 ★ 1907 2c yellow green and black, perf. 14, center inverted, unused with full original gum, h.r., usual imperceptible toning, bright colors and fresh, v.f., with 2008 Brian Moorhouse cert. ("less than five copies of this variety are known") .....(60a,var) 5,000.00



- 2550 ★ 1907 5c yellow and dull blue, perf. 14, center inverted, unused with full original gum, h.r., trivial corner crease at top right, fresh colors, v.f., with 2008 Brian Moorhouse cert. ("less than ten copies of this variety are known") .....(62var) 5,000.00



- 2551 ★ 1907 2 Colones claret & black, perf. 14, Center Inverted, unused with full original gum, h.r., usual trivial toned perfs at top, fresh colors, v.f., with 2008 Brian Moorhouse cert. ("less than five copies of this variety are known") .....(68a,var) 5,000.00





- 2552 ○ **Air Post.** 1973 50c Lake Lindora, Center Inverted, used, v.f. The center design is made up of four colors, black, yellow, blue and pink, the latter three of these colors are all inverted, but the black is upright, hence the appearance is slightly fuzzy. The stamps were commercially used on mailing a bulletin from the Baha'i center in San Jose. Around five (!) are known in total, all used (with Brian Moorhouse 2008 certificate) .....(C555var) 5,000.00

### CUBA



- 2553 ★ 1910 Portraits, 1c green & violet, 2c carmine & green, 10c brown & blue, three different, each with Center Inverted, l.h. or h.r., 2c with sheet margin at top, 1c slightly toned, 10c tiny thin spot, fine-v.f. set of inverted centers, 1c with 1991 PFC, cat. \$1,850.....(239a,240a,244a) 1,000.00



- 2554 (★) **Special Delivery.** 1910 10c orange & blue, Center Inverted, unused (regummed), fine and rare stamp, with 2001 APS certificate, cat. \$1,250 .....(E4a) 750.00

## ESTONIA



- 2555 ★ 1919 5M black and orange yellow, center inverted (yellow color), h.r., v.f., rare (Mi.13xF, €1,200) ...  
.....(35var) 700.00

## ETHIOPIA



- 2556 ★ 1919 commemoratives, complete set of 15 different, each with Center Inverted, n.h., v.f. ....  
.....(120/134var) 750.00

## FINLAND - North Ingermanland



- 2557 ★ 1920 10m brown & violet, Center Inverted, l.h., v.f., only 100 issued (Facit 14v) cat. \$1,000 .....(14a) 500.00

## FRENCH COLONIES

### French Congo



2558

2559

- 2558 ★ 1900 1fr gray lilac & olive, center and value inverted, h.r., v.f. (YT 39c) cat. €550 .....(47a) 250.00
- 2559 ★★ 1900 5fr brown orange and gray, center and value inverted, n.h., v.f., signed Brun, Roumet (YT 41e) (catalogued as hinged) cat. €650 .....(49a) 250.00

### Mauritania



- 2560 ★ **Air Post.** 1942 10fr ultramarine & carmine, 20fr carmine & brown, each with Center Inverted, l.h., v.f., the former signed Champion (YT 15a,16a, €2,600) .....(C11a,12a) 1,000.00

## BRITISH COMMONWEALTH

### AUSTRALIAN STATES - South Australia



- 2561 ★ **Revenue Stamps.** 1902 Duty Stamp 1p violet & green, rouletted 13½ x 13¼, green color (center and value) inverted, l.h., natural gum wrinkles, rounded upper left corner, fine, with 2007 Royal certificate. A fine example of this rarity, only seven (including a horizontal pair) examples recorded, with a regular stamp included for comparison, ex Sagar .....(Barefoot 2) 6,000.00

## CANADA



- 2562 ★★ 1959 St. Lawrence Seaway, 5c red and blue, center inverted, n.h., disturbed gum, fresh and v.f. example of this popular rarity, with 2010 PFC stating "part o.g. disturbed" (Unitrade CA\$12,500, SG £9,500) (approximately 200 unused St. Lawrence Seaway inverts are in private hands. Many have fingerprints, have been hinged or have other gum disturbances) cat. \$9,000 .....(387a) 3,500.00



- 2563 ★★ 1991 Provincial Normal School, Truro, N.S., \$2 brown and multicolored, inverted inscriptions, single error se-tenant with brown cutting guide invert gutter at bottom (from the Hamilton Find), the error with tab and partial design at top, n.h., v.f. Only ten gutter inverts known, ex-Sagar, with 2000 APS certificate (Unitrade 1376b, 1376vii, CA\$22,000) .....(1376b,var) 5,000.00



- 2564 ★★ 1995 \$2.00 Truro Normal School, Inscriptions Inverted, n.h., v.f., with normal single included for comparison. (Only 70 inverts were printed. A block of 15 was accidentally shredded, leaving only 55 copies available to collectors) (Unitrade CA\$12,000), cat. \$8,000 .....(1376b) 3,000.00

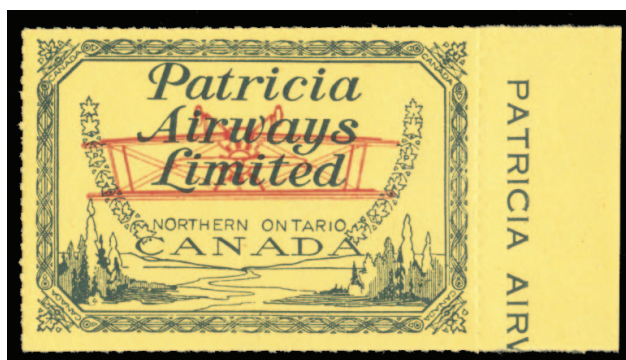




- 2565 ★ **Air Post Semi-Officials.** 1927 Patricia Airways, 50c green & red on yellow, Inverted Airplane, "Red Lake" overprint ascending, lower left sheet corner margin single with part inscription, intact rouletting on all sides, h.r., v.f. Only one pane of eight (!) was printed (Unitrade CA \$2,500) cat. \$2,250 .....(CL30q) 750.00



- 2566 ★★ 1928 Patricia Airways, 10c green & red on yellow, Inverted Airplane, upper right sheet corner margin single, "PAL" inscription, with intact rouletting on all sides, beautiful and striking Biplane error, n.h., v.f., only 48 printed (Unitrade CA\$3,000) cat. \$1,500 .....(CL43a) 750.00



- 2567 ★★ 1928 Patricia Airways, 10c green & red on yellow, Inverted Airplane, right sheet margin single, n.h., v.f., only 48 printed (Unitrade CA \$3,000) cat. \$1,500 .....(CL43a) 500.00





- 2568 ○ **Revenue Stamps.** 1868 Third Bill Issue, \$2 red & black, Center Inverted, used, canceled by double oval "Roberts Smith & Co. Quebec Feb 4 1876" cds in blue, usual centering, completely sound, without the usual defects that plague this issue, vibrant colors and intact perforations, fine example of the rare and popular Canadian Revenue Invert (van Dam FB53a, CA\$12,500) .....(FB53a) 3,000.00



- 2569 ○ 1868 Third Bill Issue, \$2 red & black, Center Inverted, 1875 handstamped cancel, small thin and expertly repaired at top right, fine appearance of this rare and popular Canadian revenue invert, with 2003 Jamieson guarantee (van Dam FB53a, CA\$12,500) .....(FB53a) 1,500.00



- 2570 ○ 1868 Third Bill Revenue Stamp, \$2 vermillion and black, center inverted, used, small repair, otherwise fine and rare, with 2002 APS certificate (van Dam FB53a, CA\$12,500) .....(FB53a) 2,000.00

## COOK ISLANDS



- 2571 ○ 1932 Captain Cook, 1d black & lake, center inverted, canceled to order and tied on piece by Rarotonga cds, fine example of this rarity, with 2023 Royal certificate (a single pane of 80 was issued and sold at Rarotonga. One of the key inverted centers of the world and a major British Commonwealth rarity. Only five (!) used examples recorded) (SG 100a, £8,500) cat. \$9,500 .....(85a) 4,000.00



- 2572 ★★ 1932 2½p dark ultramarine & black, Center Inverted, n.h., fine (SG 102var) (catalogued as hinged) cat. £300 .....(87var) 150.00

## JAMAICA



- 2573 ★ 1920 1sh bright orange & orange, Frame Inverted, h.r., slight overall toning, small surface rub at top right, really of no consequence, well centered. A v.f. example of the 1sh Statue of Queen Victoria, with frame inverted (according to most accounts this "Inverted Frame" variety was discovered by a local collector at the small Post Office in Manchioneal, a village on the coast of Jamaica in March 1922. It is presumed that only one sheet of 60 must have had the error, with half the sheet going to Manchioneal and some being fiscally used, while, more than likely, the other half sheet going to Kingston, as used copies of the error exist with Kingston cancelations. Estimates vary among specialists as to the exact number of these errors that still exist - some as low as only ten - to no more than approximately 20). An important British Commonwealth rarity, ex Cameron and Mahfood collections (SG 85a, £40,000) cat. \$40,000 .....(83a) 15,000.00

## LABUAN



2574 ○

**Postage Dues.** 1901 8c red and black, frame inverted, overprint reading down, oval of bars cancel as always (this rarity is only known used, canceled to order), unobtrusive cancel leaving the complete inverted center vignette untouched, beautiful fresh and unoxidized color, usual centering, fine and most desirable stamp in sound condition, less than 40 reported, with 2009 Philatelic Foundation certificate (SG D6ba, £8,500) cat. \$12,000 .....(J6a)

5,000.00

## NEW ZEALAND



2575 ★★

2004 Olympic Games \$2 Peter Snell (gold medalist for 800 meters in Rome in 1960), center inverted (as the prismatic plastic design is upside down). This spectacular error was found in a local Hamilton post office and it is believed that only a single pane of 16 was issued. When a customer, who went to buy a stamp for his overseas mail noticed the error, he came back and purchased the remaining seven stamps (by this time half the pane had already been sold to public and are likely to have been used on mail and subsequently discarded). One of the examples has been sold back to New Zealand Post and is currently displayed in the New Zealand National Museum at Te Papa as the most significant NZ stamp error after the 1905 4d Taupo inverted center error. The current error was found shortly after release and once NZ Post heard of this problem, the remaining stamps were withdrawn from circulation. A rarity, with 2005 Royal certificate (a similar error realized \$2,875 in our Sagar sale October 2011) .....(1971var)

2,000.00

## SOUTH AFRICA - Transvaal



2576 ★★

**Revenue Stamps.** 1902 KEVII 2sh6p Revenue stamp, center inverted, well centered, n.h., natural gum creases and toned specks, v.f. ....(Barefoot 83a)

400.00

## TONGA



- 2577 ★ 1897 7½p black and green, Center Inverted, l.h. and well centered example of this popular rarity, trivial natural gum creases, v.f., with clear 1961 BPA certificate. Only 60 printed (SG 48a), cat. £7,500.....(47a) 4,500.00

## GREECE



- 2578 ○ 1927 Athens Academy, 5d yellow & black, Center Inverted, canceled "KENTPIKON 13 XII 34" Athens, heavy diagonal corner creases, otherwise fine, with 2007 Alex Rendon certificate. A very rare stamp, only 16 exist (Hellas 477b) cat. €10,000 .....(331b) 2,000.00

## GUATEMALA



2579



2580



2581

- 2579 ★ 1881 Quetzal, 2c brown and green, center inverted, h.r., fresh and fine, with 1993 APS certificate, cat. €400.....(22a) 300.00
- 2580 ○ 1881 Quetzal, 5c red and green, center inverted, faint cancel, small faults (including creases and toning), v.f. appearance, ex-Cunliffe, cat. \$1,300.....(23a) 250.00
- 2581 ★ 1881 Quetzal, 20c orange and green, center inverted, small h.r., v.f., cat. \$500.....(25a) 300.00





- 2582 ○ 1911 General Post Office, 25c black and blue, center inverted, rejoined horizontal pair, lightly cancelled, pressed out crease, otherwise fine, with 1999 APS certificate, ex-Sagar (YT 145a) cat. €2,500 .....(141a) 1,500.00



- 2583 田 1911 5p red and black, Center Inverted, top right corner margin block of six, used on piece, violet cancels, each with a vertical cut made by the Postmaster General when he discovered the error (known as the "slash" variety), fine-v.f., one of the largest known used multiples of this error, with 2002 PFC, ex-Sagar .....(142a) 300.00

### HAITI



- 2584 ★ 1904 Presidents, six different, each with center inverted, scattered tone specks, mostly fine-v.f. ....(83-88var) 150.00

## HONDURAS



- 2585 ★ 1891 President Bogran, 2p, 5p and 10p, set of three, each with Center Inverted, 2p with repaired tear, otherwise fine. Only 54 of the 2p exist. Also included is a 1997 1.40L Astronomical Observatory, single with center inverted .....(62a-64a,C107a) 150.00

## HUNGARY



- 2586 ★★ 1921 5,000k dark green and pale blue, Madonna and Child, center inverted, never hinged (tiny natural gum adhesion) well centered and post office fresh, very fine and beautiful stamp. One of the premier Inverted Centers of 20th century Europe and certainly one of the finest of the less than 100 examples reported (used and unused), of which least 38 are tied up in museums (catalogue value for hinged) cat. \$16,000 .....(386a) 15,000.00



- 2587 ★ **Postage Dues.** 1918 2f green and black, numeral (center) inverted, usual centering, fresh and fine example of this rarity, cat. \$2,100.....(J65a) 750.00

### IRAN



- 2588 ○ 1924 Shah Ahmed, 2k indigo and red, center inverted, horizontal pair, Mohammareh cds at top, left stamp defective, right stamp completely sound, fine. A rarity, as only 10 (!) examples (nine of which are used) exist. An important multiple for either an inverted centers of the world collection or an advanced collection of Iran, considerably undercatalogued, cat. \$12,000 .....(675a) 4,000.00



- 2589 ★★ 1949 10r carmine and blue green, center inverted, sheet margin single, n.h., v.f., signed Stollow, etc., cat. \$3,500 .....(927a) 1,500.00





2590 ★★田

1956 Mohammed Reza Pahlavi, 50d brown & olive brown, center inverted, lower right sheet corner margin block of four, positions penciled on back, n.h., v.f., signed Riacchi, with his 2012 certificate. Only 100 stamps printed, this is the unique sheet corner margin block of four (reportedly sold for \$200,000 during the 1980s). A showpiece of this sought after rarity (catalogued as four singles) cat. \$15,000.....(1059Ab)

5,000.00

## ITALIAN STATES

### Sardinia



2591 ☒

1858 20c dark ultramarine, Head inverted, three ample margins, slightly in at bottom tied by Torino 3 Otto 58 cds on complete FL addressed to Chambery, with Italian transit and Chambery 4 Oct 58 arrival cancels, fine and rare inverted Embossed Head variety on cover, signed Colla, with his 2018 certificate (Sassone 15A, €40,000), cat. \$16,000.....(12g)

1,500.00





- 2592 ○ 1858 40c red, Head Inverted, lightly canceled, three ample margins, just touching at upper left, fresh and fine example of this rarity, with 2005 Sorani certificate (Sassone 16C, €24,000) cat. \$6,250.....(13e) 1,000.00



- 2593 ○ 1858 80c brown orange, "ocra arancio", Head Inverted, canceled "Torino 18 Mar 1858", margins just touching on two sides, few minor faults, otherwise a fine example of this rare stamp, with 1968 Friedl and 1977 Raybaudi certificates, the latter stating that the stamp is unique in this shade, also with 2009 Philatelic Foundation Certificate (Sassone 17b, €60,000) cat. \$22,500.....(14e) 1,500.00

### ITALY



- 2594 ○ 1928 Emmanuelle Filiberto 30c lake-brown and deep bluish green, center inverted, used, fine and very rare, with 1999 Sorani and 2011 G. Colla certificates (Sass.228a, €16,000) cat. \$9,200 ..(203a) 3,000.00



- 2595 ○ **Postage Dues.** 1870 2c, 5c, 30c, 50c and 60c ochre & carmine (First Printing), numerals inverted, used, usual centering, fine and seldom offered group, with APS, Raybaudi and Alex Rendon certificates (Sass.4b,5b,7b,9b,10b, €30,500) .....(J4a/11a) 2,500.00



- 2596 ○ 1870 40c ochre & carmine, numerals inverted, used, strong colors indicative of the First Printing, usual centering, fine and unique, as this is the only known 40c First Printing with numerals inverted, signed Diena, with 2006 Raybaudi certificate ("Grande Rarita"), listed but unpriced in Sassone (Sass.8b), ex-Balner .....(J9var) 2,500.00



- 2597 ★★ 1890 60c orange & buff, numerals inverted, n.h., usual centering, fresh colors, with 1984 Raybaudi certificate (Sass.26a, €1,800) .....(J11a) 200.00



- 2598 ○ 1890-91 1L carmine & blue, Numeral Inverted, exceptionally well centered, canceled on piece, v.f., signed Colla, with his 1999 certificate ("perfetto e di notevole centratura e freschezza") (Sass.27a, €4,500 for average centering) cat. \$4,500 .....(J14b) 1,000.00



- 2599 ○ 1890-1903 2 Lire blue & magenta, numeral inverted, used on piece along with 5c, 30c and 50c, tied by "Trepuzzi" cds, fine and very rare, signed Diena, Bolaffi, etc., with 2006 Raybaudi certificate (Sass.12a, €4,500) cat. \$4,500 .....(J16a) 500.00



- 2600 ○ 1870 5 Lire, 10 Lire blue & magenta, each with numerals inverted, used, usual centering, the former with 2002 Alex Rendon certificate, the latter signed Serrane (Sass.13b,14b, €2,700) cat. \$1,850 .....(J17a,19a) 400.00





- 2601 ○ 1890 20c on 1c ocher & carmine, overprint inverted, used, fine and rare stamp, with 1990 Enzo Diena certificate (Sass.18a, €15,000) cat. \$10,000.....(J26a) 1,500.00

## ITALIAN COLONIES

### Eritrea



- 2602 ★★田 1920 5c buff & magenta, numeral and overprint inverted, lower left sheet corner margin block of four, l.h. in margin only, stamps n.h., usual centering, fine and rare multiple, signed Raybaudi, ex-Balner (Sass.14a, €4,200) (catalogued as hinged singles) cat. \$2,200 .....(J1bc) 500.00

### Libya



- 2603 ★/★★ 1921 5c, 10c, 15c, 25c (two, one unwatermarked), five different, each with center inverted, hinged and n.h., fine-v.f. ....(22b-25a,53a) 150.00



- 2604 ★ 1921 30c black & brown, Center Inverted and shifted to bottom, l.h., well centered, fresh and v.f., signed Diena, with 2009 Philatelic Foundation certificate (Sass.27ca, €7,000) cat. \$2,750.....(26a) 750.00



- 2605 ○ 1921 50c black & olive green, Center Inverted and shifted to bottom, used, light, face-free cancel, well centered, fresh and v.f., signed Colla, with his 2014 certificate (Sass.28ca, €12,000) cat. \$4,750.....(27b) 1,000.00



- 2606 ★★ 1924 50c black & olive green, Center Inverted, n.h., post office fresh, fine, signed Alberto Diena, also Enzo Diena, with his 1991 certificate (Sass.51c, €20,000) cat. \$6,750.....(55b) 1,500.00



- 2607 ★ 1926 15c black brown & orange, perf.11, Center Inverted, l.h., well centered, fresh and v.f., signed Colla, with his 2014 certificate (Sassone 62a, €9,000) cat. \$4,500 .....(52b) 1,000.00

### Somalia



- 2608 ★/★★ **Postage Dues.** 1923-28 2b buff & black, numeral and overprint inverted, also 50c and 60c numerals and overprint inverted, the former n.h., with Raybaudi certificate, the latter h.r., fine-v.f. (Sass.34a,46a,47a) cat. \$1,370.....(J24a,J36a,37a) 500.00

### LIBERIA



- 2609 ★ 1892 Elephant, 4c and 1c green and black, two different, each with center inverted, h.r., fine-v.f. ....(35a,101a) 200.00



- 2610 ★ 1892 President Johnson, 8c brown and black, center inverted, well centered, v.f., pencil signed, cat. \$600 .....(37a) 250.00





2611 ★ 1892 \$5 carmine & black, President Johnson, center inverted, l.h., v.f., cat. \$400 .....(49a) 150.00



2612 ★ 1892 \$5 carmine & black, President Johnson, center inverted, l.h., minor toned spot at lower left, fine, cat. \$400 .....(49a) 150.00



2613 ★ 1905 5c Elephant, center inverted, left sheet margin single, n.h., fresh and v.f., only one sheet printed (catalogue value for hinged) cat. \$1,250 .....(62a) 750.00



- 2614 ★ 1906 1c, 2c, 5c, 15c, 25c, 50c, 75c, \$1 and \$2, nine different, each with center inverted, h.r., fine-v.f. ....(101a/112a) 500.00



- 2615 ★(★) 1906 1c, 5c, 25c (2), 50c and \$1, six imperforate singles, each with Center Inverted, first and last two without gum, others h.r., v.f. ....(101,103,107,109,111var) 300.00



- 2616 ★ 1909 2c, 5c, 15c, 20c, 25c and 50c, six different, each with Center Inverted, also Officials, 20c, 50c and 75c, each without overprint and Center Inverted, one with minor perf. toning, otherwise fine-v.f., scarce assembly ....(116a/123a,O64,67,68var) 500.00

## LITHUANIA



- 2617 ★田 1919 75sk Arms, center inverted, perf. and imperf. sheet margin blocks of four, each with centers displaced to right, actually six (!) impressions of red, fine-v.f. ....(57var) 250.00



- 2618 ★★ 1922 De Jure, 2auk blue & yellow brown, center inverted, n.h., fine and scarce stamp ....(117Bc) 150.00



- 2619 ★ Air Post. 1926 60c blue & black, center inverted, h.r., v.f., cat. \$250 ....(C39c) 150.00



## MEXICO



- 2620 ○ 1916 1p brown & black, Center Inverted, imperforate horizontal pair, used, right stamp with a vertical crease, otherwise v.f. ....(513a,var) 150.00

## PANAMA



- 2621 ★ 1906-07 ½c-50c, Centers Inverted, eight stamps (seven different), h.r., occasional minor flaws, fine-v.f. ....(185/193var) 250.00



- 2622 ○ 1909 Balboa, 1c dark green and black, center inverted, neat purple cancel, centered to top as often, vertical crease at left, otherwise fine, possibly the finest quality of this rarity, one of only seven used examples reported, with 2009 Philatelic Foundation certificate. A rarity from Panama and one of the rarest inverted centers in the world (Scott Catalogue states "value for No.197a used is for an off-center example with faults") cat. \$7,500.....(197a) 5,000.00



- 2623 ★★ 1915 5c blue and black, center inverted, n.h., well centered, bright color, fresh and v.f., only 19 unused examples are believed to exist, with 1988 Rendon certificate (catalogue value for hinged) cat. \$1,500 .....(210a) 1,000.00



- 2624 ★ 1915 20c brown & black, center inverted, h.r., v.f., cat. \$300 .....(212a) 150.00



- 2625 (★) 1915 20c brown & black, two singles, each with center inverted, unused without gum as often, fine-v.f., one with Scheller certificate, cat. \$600 .....(212a) 150.00

### PARAGUAY



- 2626 ★ 1922-39 50c and 1p, also unissued Revolutionary Government 1p-50p (nine different), plus 50c, all inverted centers, total of 12 different, some poorly centered, generally fine-v.f. ....(243b/351var) 150.00





- 2627 ★ 1939 University, 50c (two) and 1p, each with center inverted, h.r., fine-v.f. ....(351-352var) 150.00



- 2628 ★★田 Air Post. 1948 10g dark green & brown, center inverted, lower right sheet corner margin block of four, hinged in selvage, stamps n.h., v.f. Only 25 copies of this error have been reported (C175var) 500.00

### PERU



- 2629 1868 1d green, Embossed Arms Inverted, unused without gum, margins all around, signed Diena, Calves, etc., with 2009 Philatelic Foundation certificate stating "with central manuscript cancel removed and regummed". While we disagree, the stamp is offered as is ....(14a) 500.00



2630 ★ 1921 1c San Martin, Center Inverted, l.h., faint natural gum bend, v.f., cat. \$600.....(222a) 250.00

### POLAND



2631 ★★ 1956 Olympics, 20gr Boxer, center inverted, n.h., fresh colors, v.f., only 14 examples are available to collectors, one of the rarest stamps from Poland, with 2003 Petriuk certificate, cat. \$17,500 .....  
.....(751a) 15,000.00

### PORTUGUESE COLONIES - Nyassa



2632 ★ 1901 Animals, 2.40r-300r, complete set of thirteen, each with center inverted, h.r., some usual even gum toning and irregular perms., otherwise fine-v.f. ....(26/38var) 500.00

## ROMANIA



- 2633 ★ 1906 General Exposition, 1.50L red lilac & black brown, center inverted, h.r., v.f. ....(204a) 400.00



- 2634 ★ 1956 1.75L Census, center inverted, barest trace of a hinge, v.f. (Mi.1564l) cat. €750.....(1081a) 300.00

## RUSSIA



- 2635 ○ 1875 10k brown & blue, Center Inverted, "Kostroma" cds as always, well centered for issue, insignificant small thin spot and slightly rounded corner at top left, otherwise fine and highly desirable example of this inverted center. A major Russian rarity, one of only five (!) recorded examples, all in used condition, ex Ferrary, Rothschild, Goss and Cunliffe collections, with 2009 Philatelic Foundation certificate (Mi.27xK, €50,000) cat. \$60,000 .....(29a) 10,000.00



- 2636 ○ 1889 14k blue & rose, Horizontally Laid paper, Center Inverted, used and well centered stamp, good color and fresh, fine example of this inverted center, signed Romeko, Diena, etc., with 2016 Robineau certificate, cat. \$4,500.....(51a) 2,500.00



- 2637 ○ 1889 14k carmine & blue, horizontally laid paper, Center Inverted, exceptionally well centered, light pmk not obstructing the center vignette, fresh and v.f., signed Mikulski, ex-Faberge (with distinctive red "Faberge-Ferrary" handstamp on back), with 2016 Buchsbayew certificate, cat. \$4,500 .....(51a) 2,500.00



- 2638 ○ 1902 15k lilac and blue, Center Inverted, well centered example, canceled "Kolomna 9.07" cds as always, deep colors, fresh, slightly irregular perforations at left, otherwise fine and rare inverted center from Imperial Russia, cat. \$4,000 .....(62b) 2,000.00





- 2639 ○ 1902 25k dull green & lilac, Center Inverted, light "Zhitomir 20 July 1906" postmark, fresh and fine inverted center, known only used, with 2012 Philatelic Foundation Certificate, cat. \$6,500 .....(64a) 2,500.00



- 2640 ○ 1902 3.50r black & gray, center inverted, canceled "Batum, 18.2.1911", fine and completely sound example of this undervalued rarity, known only used and typically centered to bottom, signed Romeko, with 2003 Mikulski certificate, ex-Faberge collection, cat. \$14,000 .....(69a) 8,000.00



- 2641 ○ 1904 7r black & yellow, Center Inverted, canceled "Batum 22.11.1917", centered to bottom as always, small thin, otherwise fine. One of only two (!) known used 7r inverted centers, signed Mikulski, with his certificate. A rarity, ex-Mikulski collection (Cherrystone December 2004 Sale, \$5,500 hammer) (Mi.56YK, €15,000) cat. \$14,500 .....(70a) 3,500.00



## SAAR



- 2642 ★ 1921 5pf, 25pf and 3m, each with center inverted, fine-v.f., 25pf signed Calves, .....(68c,80a,71var) 250.00

## SAN MARINO



- 2643 ★ **Postage Dues.** 1897-39 Numerals Inverted, 50c blue green & dark brown, 10c blue & brown, 50c blue & brown, three different, l.h. or h.r., remarkably well centered for these difficult stamps, fine-v.f., cat. \$975 .....(J4a,J20a,J25a) 250.00

## SPAIN



- 2644 ○ 1865 12c blue & rose, Center Inverted, canceled by "6" numeral of Malaga, large margins all around, fresh and v.f., with 2010 Philatelic Foundation certificate, cat. \$700.....(69a) 500.00



- 2645 ★ 1937 Portico, 1p blue and orange, center inverted, bright colors, small h.r., v.f., with 2002 APS certificate, rare, only 200 printed (YT 596a) cat. €450 .....(637a) 250.00

**Spanish Guinea**

- 2646 ★ 1924 1p dark violet and black, center inverted, l.h., v.f., signed Galvez, rare, with 2009 Philatelic Foundation certificate, ex-Sagar, cat. \$600.....(206a) 500.00

**URUGUAY**

- 2647 ○ 1895 Liberty, 25c red brown and black, center inverted, neat cancel, well centered, v.f. and rare, especially in this condition, signed Buhler, etc. It is believed that only 40 examples were sold at a post office counter before the error was discovered, and the remaining copies were destroyed. Of the 40 that were used, only a small percentage were recovered and saved, making this an exceptionally rare error, cat. \$2,000 .....(120) 1,200.00



- 2648 ★○ 1908 Cruiser Montevideo, 1c, 2c and 5c, each with center inverted, first one unused, others used, fine-v.f., with 1955 and 1999 Philatelic Foundation certificates, cat. \$900.....(174a-176a) 400.00

**Balance of the Maitland Collection**

- 2649 ★○ 1861-1986 selection, including U.S. 24c Inverted Jenny, Peter Winter forgery (used), Belize 1986 Royal Wedding sheetlet of nine, black inscriptions inverted, Forgery of Canada 5c St. Lawrence Seaway invert, Italian States, Two Sicilies 1/2g bister Head Inverted, Italy Postage Dues, 1c Center Inverted used, plus forgeries of 2L, 5L and 10L (rare), St. Vincent QEII blocks of four with centers inverted, also singles and imperforate pairs, Somali Coast 2fr and 5fr centers inverted, used and unused of each, mostly fine ..... 500.00

**END OF SALE - THANK YOU**