

AUCTION SALE

TUESDAY, MARCH 14, 2023

AT 10:00 A.M.

United States

Stampless covers

- | | | | |
|---|---|---|--------|
| 1 | ✉ | 1766 (27 Jan) FL from New Orleans to Poitton, "Col-N-Par La Rochelle" entry handstamp, charged "8" (sous), v.f. | 250.00 |
| 2 | ✉ | 1800 French Republic Marine and Colonies stationery FL to Georgetown (Washington DC), with New York clamshell and ms due markings, also French "M.tre de la Marine", contents mentions M Dupont (who worked for President Jefferson) | 200.00 |
| 3 | ✉ | 1820 (18 Apr) FL from New Orleans to France, marked "Colonies Par Nantes", received in Le Havre, charged 8 decimes and forwarded to Rouen, with red "Le Havre Deb.74" on back, the writer reports on various dealings, movement of goods, etc. "Recently has been unable to ship cotton because all ships are fully laden," etc. | 250.00 |

Postmasters' Provisionals - New York, N.Y.

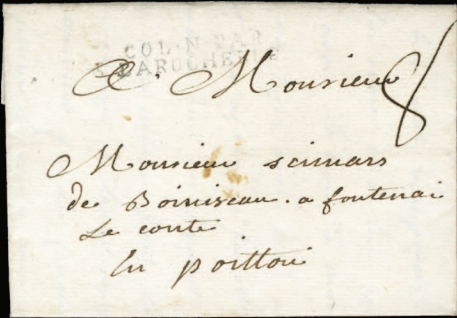
- | | | | |
|---|---|--|--------|
| 4 | ✉ | 1844 5c black, margins except in at right, good color, blue cancel on FL sent 18 May, 1846 from New York to New Haven, red PAID and arrival pmk, fine(9X1) | 150.00 |
|---|---|--|--------|



- | | | | |
|---|-----|---|----------|
| 5 | (★) | 1845 5c black on bluish paper, unsigned, unused without gum, margins all around, Position 29, showing double transfer, v.f., with 1974 and 2007 PFCs (catalogued as the regular stamp without customary premium for double transfer), cat. \$3,750.....(9X1e) | 1,500.00 |
|---|-----|---|----------|



- | | | | |
|---|---|--|----------|
| 6 | ✉ | 1845 5c black on bluish paper, unsigned, margins all around, Position 34, canceled by red "Paid" arc handstamp (not tied), with overlapping "New York 5 Cts 16 Jul" departure pmk alongside, on cover to Hartford, Conn., with lengthy original letter datelined "New York July 15, 1845", with 1989 PFC stating "stamp with small repair at right" (actually a closed tear), otherwise a v.f. stamp on cover, second earliest known use, fewer than 5(!) recorded from this date, cat. \$1,350.....(9X1e) | 1,000.00 |
|---|---|--|----------|



1



2



3



4



8



9



10



11



12



14



15



16



17



26



18



19



20



24



27



34

1847 Issue



- 7 P 1847 5c red brown, 10c black, large die proofs on yellowish wove paper, each with full cross-hatching, v.f., cat. \$1,600(1P1e,2P1e) 1,000.00
- 8 P 1847 5c red brown, large die proof on yellowish laid paper, full cross-hatching, v.f., cat. \$1,000(1P1c) 500.00
- 9 O 1847 5c dark brown, blue town pmks, left sheet margin example, closed tear at right, v.f. appearance(1) 250.00
- 10 O 1847 5c red brown, used, double transfer type A, pen cross cancel, pos. 80R1, with 2005 and 2010 PFCs, the latter stating "slightly oxidized"(1(A)) 250.00
- 11 O 1847 5c red brown, position 90R1, double transfer type B of both top and bottom frame lines, margins all around, clear at right, deep brown color on bright white paper, face free blue postmark and lightened pen cancel, fine, with 2001 PFC(1(B)) 250.00
- 12 O 1847 10c black, faint pen cancel, margins all around, v.f., looks unused(2) 250.00



- 13 ☒ 1847 10c black, large margins all around, tied by red grids on outer FL to Cincinnati, with red New York Apr 28 departure pmk alongside, filing fold away from the stamp (which is v.f.), with 1978 PFC, ex- Baron du Plessis, cat. \$1,200.....(2) 500.00

1875 Reproductions of the 1847 Issue

- 14 P 1875 5c red brown, 10c black, plate proofs on india, v.f., cat. \$750.....(3P3-4P3) 300.00
- 15 P 1875 5c red brown, 10c black, plate proofs on card, v.f., cat. \$500(3P4-4P4) 200.00
- 16 P 1875 5c red brown plate proof on card, and 10c black, plate on india, the latter wrinkled, fine, cat. \$625.....(3P4,4P3) 250.00
- 17 P 1875 5c red brown, small die proof on gray card from the Roosevelt Album, v.f., only 85 printed, cat. \$425(3P2) 200.00

1851-57 Issue

- 18 ☒ 1851 1c blue, type II, horizontal pair, usual margins, slightly in at bottom, used on outer FL from New Orleans, 12 Jan 1857 to Augsburg, Bavaria, red entry pmk and "GB 2F PK" accountancy mark, fine usage, with 1985 PFC(7) 150.00

- 19 1851 1c blue and 10c green, horizontal pair, three large margins, except in at bottom, used in 1856 on FL from New Orleans to France, manuscript "per Ericson", red Dec. 6 New York transit and 20 Dec. Etats Unis French Packet entry pmk, charged "8" (decimes), filing fold away from the stamps, with Paris and Nantes arrival pmks on back(7,15) 150.00
- 20 1851 1c blue, horizontal pair, ample margins all around, tied on a printed circular by New Orleans Feb 1 (1857) cds, with handstamped "Printed Circular Per Steamer" hs at top, addressed to Augsburg, Bavaria, with red French entry (27 Feb) and framed "GB 1F PK" Franco-British accountancy mark, arrival 1/3 on reverse, v.f., with 1985 PFC. One of only two recorded covers to Bavaria (the other ex-Wagshall, Neinken)(9) 500.00



- 21 1851 5c red brown, lightly canceled, large margins all around including part of adjoining stamp at left, beautiful impression, with 1986 PFC and 2011 PSE certificate, the latter graded "Superb 98" (SMQ \$4,500-only 8 stamps have achieved this grade according to the PSE Population Report) (12) 2,000.00



- 22 1851 5c red brown, three overlapping singles, margins all around, tied by New Orleans (June 28, 1857) cds on FL to Brest, France, with red New York Paid handstamp, carried by the "Persia" Cunard Liner to Liverpool (July 17) with French transit, right stamp with small ink spot at top right, still a v.f. 15c rate cover to France, with 1969 and 2009 PFCs, ex-Waterhouse, Meroni, Mayer, Eubanks and Middendorf(12) 1,500.00



- 23 1851 10c green, type II, horizontal pair, used, large margins all around including parts of adjoining stamps at top, with 2016 PSE certificate graded "XF-Sup 95" (SMQ \$1,300 as singles)(14) 600.00
- 24 1851 FL from New Orleans to Paris, franked with 10c green, cut close at sides, with "GB 1F 60c", Boston and London transits, backstamped on arrival, some toning, fine Trans-Atlantic usage(14) 150.00



- 25 ★田 1851 12c black, block of four, unused with original gum (h.r.), margins in at right and lower left, nice impression, top stamps with diagonal crease and right stamps with vertical crease, otherwise a presentable example of this rare multiple, with 2000 PFC, cat. \$45,000(17) 4,000.00

1857-61 Issue

- 26 ○ 1857 1c blue, type Ic, "E" Relief, pos. 82R4, lightly canceled, reperforated at top, otherwise v.f., with 2021 Crowe certificate, cat. \$3,500(19b) 750.00
- 27 ★ 1857 1c blue, type II, very lightly hinged, well centered, fresh and v.f., with 2003 PFC, cat. \$850(20) 500.00



- 28 (★)田 1857 1c blue, se-tenant block of four, pos. 66-67/76-77R4, top stamps type III, bottom stamps type IIIa, unused without gum, usual centering, bottom stamps thin, few pulled or separated perfs, otherwise v.f. and rare, with 2011 Weiss certificate, ex-Wagshall (catalogued as two pairs with original gum) cat. \$45,000(21-22) 4,000.00



- 29 ★ 1857 1c blue, type IV, unused with disturbed original gum, h.r., well centered, v.f., with 2016 PSE certificate, cat. \$10,000(23) 2,500.00



31



32



33



36



37



41



42



44



52



40



43



45



46



47



49



53



56



54



50



59



61



51



- 30 P 1857 1c-90c, set of eight plate proofs on india, 1c and 3c with margins just in on one side, others with large margins all around, 1c repaired and with a closed tear, 3c thin and slightly oxidized, 5c with a small tear, 24c with small surface scrape and 30c with faint crease and slightly oxidized, otherwise fine-v.f. and scarce group of india proofs, each with 1997 PFC, cat. 10,000 ... (24P3/39P3) 2,000.00
- 31 ☒ 1857 1c blue, two singles used on outer FL from New York to Bremen, endorsed "per Africa", with French entry pmk and charged "4" (Groschen), with Bremen Thurn & Taxis arrival pmk on back, fine and scarce usage to Bremen (24) 150.00
- 32 ☒ 1857 1c blue, two singles used on price current (Baltimore Price-Current) to Bremen, tied by blue "Balt: Paid" departure cds, endorsed "per Steamer Canada", with 8 Oct. 60 French entry pmk and charged "5" (Groschen), with Bremen Thurn & Taxis arrival pmk on back, fine and scarce usage to Bremen (24) 250.00
- 33 ☒ 1857 5c red brown, type I, single and horizontal pair on FL from New Orleans to Paris, New York and French Transits, with Paris arrival, cover with minor faults, otherwise fine (28) 500.00
- 34 P 1857 12c black, Plate III, plate proof on india, with clear broken frameline at top, fine, cat. \$1,250... (36BP3) 300.00

1875 Reprints of the 1857-61 Issue



- 35 P 1875 1c-90c complete set of large die proofs on cards, fresh and v.f., scarce set, cat. \$2,600 (40P1-47P1) 1,000.00
- 36 P 1874 1c-90c, set of eight plate proofs on india, fine-v.f., cat. \$1,250 (40P3-47P3) 400.00
- 37 P 1874 1c-90c, set of eight plate proofs on card, fine-v.f., cat. \$425 (40P4-47P4) 200.00



- 38 (★) 1875 90c deep blue, unused without gum as issued (h.r.), usual perfs, deep color, fine, cat. \$3,750(47) 1,500.00

1861 Premiere Gravure



- 39 ★ 1861 5c brown, unused, small part original gum which thinly covers about half the back, with 1973 and 2008 PFCs which state "traces of gum", deep rich color, perf. added at upper left ("the fourth down from the top"), also short perfs at bottom, fine appearance, one of only 37 recorded in Siegel census (at least half of those are with various faults), ex-Lilly, Newport and Przybyl collections, cat. \$30,000.....(57) 7,500.00
- 40 E 1861 90c die essay in deep blue, with incomplete label and leaves on india card (55x64mm), pencil "No.17" notation at bottom, minor marginal stains, v.f., with 1988 PFC (Brazer 62E-Ba)(62E) 150.00

1861-68 Issues

- 41 P 1861 1c-90c, complete set of plate proofs on india, including both 2c Dies, fine-v.f., cat. \$835(63-72P3) 250.00
- 42 P 1861 1c-90c, complete set of plate proofs on card, including 3c scarlet and 24c brown violet, fine-v.f., cat. \$1,185.....(63-72P4) 350.00
- 43 ☒ 1861 (Mar) large part of 1865 FL to France, with 3c and 12c paying 15c, tied by indistinct grids, with "per Str Washington" endorsement alongside, framed "PD" and "Etats Unis Paq Fr. Washington" octagonal French Packet pmk, transit and Gironde arrival, fine and rare, signed Calves(65,69) 500.00
- 44 (★) 1861 5c buff, unused without gum, upper right corner perf. added, well centered, fine appearance of this rare stamp (catalogued as unused without gum), cat. \$12,500.....(67) 1,500.00
- 45 ☒ 1861 10c green, two singles tied on cover to Paris, San Francisco July 13, 1864 departure, New York transit and French "Etats Unis Le Havre" entry pmk, red "PD" and arrival pmk on back(68) 150.00
- 46 ☒ 1861 5c brown, 10c green, tied by Foreign Mail cancels on cover to Switzerland, with Williamsburgh, NY May 3 departure pmk, red New York transit, blue "America Uber Bremen Franco" and "Affr.Insuf". straight line, with "10" (centimes) postage due assessed in red crayon, framed "Franco Schwiez.Grenze" (Swiss border), various transit markings including German entry Heidelberg-Basel and arrival pmks, fine cover(68,76) 250.00

- 47 ☒ 1861 30c orange, tied by cork cancel on FL used in 1867 from New Orleans to France, with appropriate sequence of transit and arrival pmks, readdressed on arrival in Le Havre to Ribeauville, Haut Rhine, with oval forwarding agent's handstamp on back and arrival pmk, fine cover, with 1992 PFC, cat. \$400(71) 200.00



- 48 ★田 1861 2c black, block of four, h.r., minor perf. separations, good color, fine, cat. \$2,750(73) 500.00
- 49 ☒ 1866 printed matter circular from New York to Bremen, franked with 2c Blackjack, foreign mail cork cancel and red French entry cds, endorsed "per Australasian" and charged "4" (groschen) in blue crayon, Bremen Th & Th (Thurn & Taxis) arrival on back(73) 250.00
- 50 ☒ 1866 2c black, well centered, tied by grid pmks on complete wrapper "Le Messager Franco-American" New York to Le Journal "La Petrie", Paris France, charged "15" (decimes), fine and rare Blackjack on newspaper wrapper to France(73) 250.00
- 51 ☒ 1868 (2 June) cover franked with 24c gray lilac, sent from Washington D.C. to Sydney, New South Wales, endorsed "Per Steamer via England and Marseilles", "Fr. 2F55c" accountancy mark and "Insufficiently Paid" hs on front (correct rate was 30c), treated as unpaid and charged "4" (shilling) postage due, further crayon markings including "36" and "23" (crossed out), with "37" on back, those probably applied in NSW Post Office, fine cover to uncommon destination 150.00

1869 Pictorials

- 52 P 1869 1c-90c, complete set of plate proofs on india, fine-v.f., cat. \$855(112P3-122P3) 250.00
- 53 P 1869 1c-90c, complete set of plate proofs on card, 90c with design somewhat faded, otherwise fine-v.f., cat. \$875(112P4-122P4) 200.00
- 54 E 1869 1c blue green, die essay on india, full die sinkage on card (66x69mm), v.f., cat. \$2,000..... (112-E5c) 500.00



- 55 ★ 1869 2c brown, Without Grill, minor h.r., well centered, v.f., with 1995 and 2010 PFCs, cat. \$14,000(113b) 5,000.00
- 56 ★★ 1869 3c ultramarine, n.h., well centered, v.f., with 2018 PSE for a block of six from which this originated(114) 200.00
- 57 E 1869 10c black brown, essay on ivory paper, 65x71mm, with imprint at bottom, few marginal thins, otherwise v.f., cat. \$1,000.....(116E-Dc) 300.00



57



64



65



67



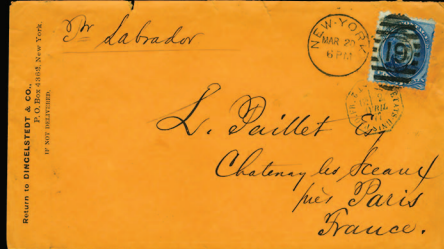
70



71



62



63



66



68



69



76



78



81



79



84



83



85



89



80



- 58 P田 1869 15c brown and blue, plate proof on india, bottom margin plate no. block of eight, inconsequential pinhole between the stamps, otherwise fresh and v.f., cat. \$4,000.....(119P3) 750.00
- 59 O 1869 90c carmine & black, used, sharp colors and perforations, centered to top, fine, with 1981 PFC, cat. \$1,900(122) 500.00

1875 Re-Issue of the 1869 Pictorials



- 60 E 1875 15c dark brown, type III, with blue green overprint, die on india, usual thins just away from the design, otherwise fine and rare (Brazer 129E-Ac) cat. \$3,500(129-E1c) 750.00

1870-71 Issue

- 61 P 1870-73 1c-90c, two different sets of plate proofs on india, few stamps thinned, otherwise fine-v.f., cat. \$869(145P3-166P3) 200.00

1873 Continental Bank Note Company


- 62 匣 1873 cover franked with pair of 5c blue, large foreign mail segmented cork cancel, with red New York Feb 10 1876 cds alongside, endorsed "Steamer Wieland France", red Cherbourg entry pmk, redirected on arrival, various transit and arrival pmks on back, fine Supplementary Mail usage 250.00
- 63 匣 1873 four covers, three with single 5c (one with small faults) from Buffalo, N.Y. to Sweden (2), another to France, plus a stationery entire envelope with additional franking used in 1882 from Boston to Brazil, with Rio de Janeiro arrival, fine-v.f. 250.00
- 64 P 1873 1c-90c, set of eleven plate proofs on card, fine-v.f., cat. \$1,220(156P4-166P4) 250.00
- 65 P 1873 1c-90c, set of eleven plate proofs on card, v.f., cat. \$1,220.....(156P4-166P4) 250.00
- 66 匣 1873 cover franked with pair of 5c blue, tied by cork cancels and red French exchange office cds, endorsed "S.S. Republic", NY Supplementary Mail March 27, 1880 Paid pmk alongside, fine cover(185) 150.00

1875 Special Printing

- 67 P 1875 2c black brown, also 30c full black, plate proofs on card, v.f., signed Jim Lee, cat. \$800.....(190P4,193P4) 250.00

1879 American Bank Note Company

- 68 匣 1879 outer FL franked with 2x5c blue, tied by N.Y. Supplementary Paid cds, addressed to Bordeaux, with "Paq. Allemagne Par Bord." entry pmk, endorsed "Per. S.S. Germaine", also a 5c stationery entire envelope with additional 5c dark blue, tied by N.Y. Supplementary Paid cancel, used in 1883 to Paris, endorsed "Frisia", red "Etats-Unis Cherbourg" entry mark and Paris arrival on back, cover roughly opened, fine pair of N.Y. Supplementary Mail letters to France 250.00

- 69  1879 outer FL franked with 2x5c blue, tied by N.Y. Supplementary Paid cds, addressed to Bordeaux, used in 1880, endorsed "Frisia", red "Etats-Unis Cherbourg" entry and arrival pmks on back, fine 150.00
- 70 P 1879 selection of eight plate proofs on india and ten plate proofs on card (including two 10c), fine-v.f., cat. \$655(183P3/211P4) 150.00

1881-1888 Bank Note Issues

- 71 P 1887-88 1c-90c, set of seven plate proofs on india, also 2c-90c, set of six plate proofs on card, fine-v.f., cat. \$910.....(210P3/218P4) 300.00

1890-93 Issue

- 72 P 1890 1c-90c, set of plate proofs on india (without 2c carmine) and card (with additional 2c carmine), some faint staining, otherwise fine-v.f., cat. \$1,574 (web photo).....(219P3/229P4) 400.00

1893 Columbian Exposition



73

74

- 73 (★) 1893 1c-\$5, complete set, unused without gum, bright colors, few small faults, otherwise fine-v.f.(230-245) 1,000.00
- 74 (★) 1893 1c-\$5 complete set of 16, unused without gum (15c o.g.), unusually fresh, well centered, occasional minor flaws (\$2 tiny thin and \$5 short perfs at bottom), with additional 50c (small thin), fine-v.f. and beautiful complete set(230-45) 1,500.00
- 75 P 1893 1c-\$5, complete set of plate proofs on card, some faint stains, otherwise fine-v.f., cat. \$2,110 (web photo)(230-245P4) 500.00
- 76 P 1893 1c-\$4, fifteen small die proofs on white wove paper from the Roosevelt album, \$2 and \$4 stained, the latter discolored in the margins, otherwise fine-v.f., cat. \$5,400(230-244P2) 1,000.00
- 77 P 1893 1c, 10c, 30c and \$5, plate proofs on india, fine-v.f., cat. \$820 (web photo)(230/245P3) 250.00
- 78 ★★田 1893 2c brown violet, 4c green, blocks of four, n.h., fine-v.f., cat. \$514(231,232) 150.00
- 79 ★田 1893 6c purple, bottom Plate No. 104 and Imprint block of eight, h.r. at top, fresh and fine, cat. \$1,800.....(235) 250.00
- 80 ★★田 1893 6c purple, sheet margin block of 15 (5x3), n.h., half of the stamps affected by tiny natural gum skips or faint toned specks, otherwise fresh, fine-v.f., cat. \$2,250(235) 500.00
- 81 ★★田 1893 6c purple, bottom Plate No. Imprint block of six, n.h., short perfs at right margin, stamps well centered, v.f. (catalogued as singles) cat. \$900(235) 250.00



- 82 ★★田 1893 6c purple, bottom Plate No.104 and Imprint block of eight, n.h., well centered, minor creases and perf. separations at left, fine-v.f., with 2020 PFC, cat. \$1,800(235) 500.00

83	★田	1893 6c purple, top margin Plate no. block of six, hinged with somewhat disturbed gum, well centered, v.f., cat. \$1,250(235)	250.00
84	★★田	1893 6c purple, 10 copies, including two blocks of four, n.h., fine-v.f., cat. \$1,500(235)	300.00
85	★★	1893 6c red violet, n.h., with 2006 PSE certificate graded “XF 90” (SMQ \$400)(235a)	200.00



86	★★	1893 50c slate blue, n.h., post office fresh and well centered, with 2021 PSE certificate, graded “VF-XF85” (SMQ \$2,000)(240)	1,000.00
87	★○	1893 \$1 salmon, four copies, two used, small thins, two unused, one defective, the other thinned, fine appearance (web photo)(241)	500.00



88	★	1893 \$3 yellow green, l.h., well centered, bright color, v.f., with 1991 PFC, cat. \$1,500(243)	500.00
89	★	1893 \$3 olive green, l.h., few tiny natural gum cracks mentioned in the accompanying 2014 Weiss certificate, fresh and fine stamp, cat. \$1,400(243a)	500.00



90	★	1893 \$5 black, h.r., well centered, good color and fresh, fine stamp, with 2011 PFC, cat. \$2,400(245)	1,200.00
----	---	---	----------

1894-97 Bureau Issues

91	★	1894 \$2 bright blue, mount disturbed original gum, small thin, reperfored at left, otherwise fine, with 2019 William T. Crowe certificate, cat. \$2,750(262)	250.00
92		1895 Post Office “Counterfeit Postage Stamps” notice, Postmaster at Detroit, Michigan, with genuine and fake stamps affixed side by side, rare (web photo).....	500.00
93	(★)	1895 \$1 black, type II, unused without gum, well centered, v.f., with 2021 PSAG certificate (catalogued as unused without gum) cat. \$500(276A)	250.00
94	★	1895 \$2 dark blue, l.h., nice color, reperfored, v.f. appearance, cat. \$900(277a)	200.00
95	★	1895 \$5 dark green, l.h., rich color, fine, with 2019 PSE certificate, cat. \$2,000.....(278)	750.00
96	○	1895 \$5 dark green, used, centered to bottom, faint thin, fine appearance, cat. \$600(278)	200.00
97	★★	1897 15c olive green, large, balanced margins all around, n.h., tiny gum skip, not mentioned on the accompanying 2017 PSE certificate, v.f. and difficult stamp in this condition, cat. \$475.....(284)	750.00



91



93



94



95



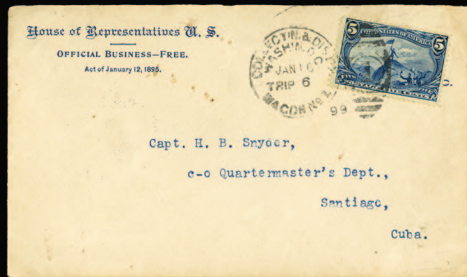
96



97



99



100



11



102



103



104



105



106



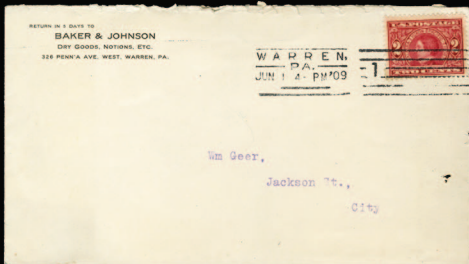
109



129



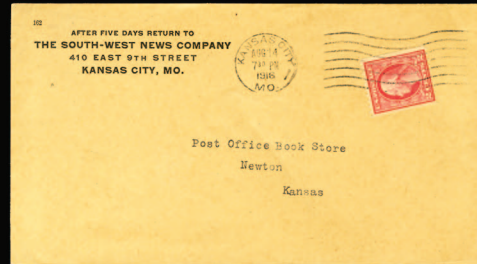
131



114



115



122



117



118



123



130

1898 Trans-Mississippi Exposition

- 98 ☒ 1898 1c dark yellow green, tied by Louisville, KY cancel on small box addressed to Spartanburg, SC, which was used to redeem coupons and thus fell under the 1c per ounce Fourth Class rate, fine and rare usage (web photo).....(285) 250.00
- 99 ☒ 1898 Jacob Dold Packing Co. advertising cover sent to Hamburg, Germany, franked with 2c and Bureau 1c and 2c, all tied by Buffalo cds, with additional advertising and Hamburg arrival on reverse, usual cover wear and wrinkles, otherwise v.f.(286) 150.00
- 100 ☒ 1898 5c dull blue, tied by "collecting & Dist'n Wagon no.1" cds on House of Representatives cover to Cuba, with Washington DC transit on reverse, v.f.(288) 350.00



- 101 ★ 1898 \$1 black, minor h.r., well centered and rich bold color, with 1983 and 2020 PFCs, the latter graded "XF-90" (SMQ \$1,750)(292) 1,000.00
- 102 ★ 1898 \$1 black, small h.r., well centered, fresh and beautiful stamp, v.f., cat. \$1,500(292) 750.00
- 103 ○ 1898 \$1 black, used, unobtrusive cancel, large margins all around, guide-line at top, fresh and v.f. used \$1 Trans-Mississippi, with 1986 PFC, cat. \$700(292) 500.00
- 104 ○ 1898 \$1 black, two used singles, one with straight edge at left, small faults, fine appearance, cat. \$1,400.....(292) 250.00
- 105 ○ 1898 \$1 black, straight edge at left, used, well centered, v.f., cat. \$700(292) 250.00
- 106 ○ 1898 \$1 black, straight edge at right, used, well centered, v.f., cat. \$700(292) 250.00



- 107 E 1898 large die essay of the vignette only on india, State I, on 134x90mm card, showing incomplete engraving of Farming in the West vignette originally intended for the \$2 but subsequently used on the 2c, v.f., one of only two recorded examples, cat. \$3,000(293-E2) 1,000.00

1901 Pan-American Exposition

- 108 ★田 1901 2c carmine black, two blocks of four, centers misplaced to top or bottom, fine-v.f. (web photo)(295var) 250.00

1902-08 Issue

- 109 ★ 1902 \$2 dark blue, very lightly hinged, well centered, beautiful color, fresh and v.f., with 2018 PSAG certificate, cat. \$825.....(312) 500.00

1904 Louisiana-Purchase Exposition

- 110 P 1904 Hesse Envelope company production proof for the World's Fair, uncut sheet with two designs, with Palace of Education and Palace of the Arts (designs 61-62), upper right corner creased, otherwise v.f. (web photo)..... 150.00
- 111 ★田 1904 10c red brown, bottom Plate No. 2107, Imprint block of four, nice color, slightly disturbed gum and slightly creased at top, otherwise fine, cat. \$1,250(327) 250.00



- 112 ★★田 1904 10c red brown, bottom Plate No. 2105, Imprint block of six, n.h., post office fresh, well centered, crisp and v.f. Plate No. Block of six, rare in this condition, cat. \$4,000(327) 2,500.00

1907 Jamestown Exposition

- 113 ★★田 1907 2c carmine, pane of 50, n.h., bright color, one stamp with offset on reverse (well away from the plate number), fine-v.f., cat. \$4,690 (web photo)(329) 750.00

1909-13 Issues

- 114 匣 1909 2c Alaska-Yukon, tied by Warren, PA June 14 1909 machine cancel on FDC to Jackson Street, cover roughly opened at top, otherwise v.f. and rare, with 1967 PFC, cat. \$3,000.....(370) 500.00
- 115 匣 1909 2c Alaska-Yukon, tied by Alliance, Ohio machine cancel on "window" FDC, v.f. and rare, cat. \$3,000.....(370) 500.00
- 116 ★★ 1910 10c yellow, top Plate No. and Imprint strip of three, n.h., right copy with tiny gum skips, fine-v.f., with 2009 Weiss certificate (catalogued as singles) cat. \$600(381) 200.00

1913-15 Panama-Pacific Exposition



- 117 ★ 1913 Perf. 10, 10c orange, l.h. (looks n.h.), large even margins all around, really a spectacular stamp, with 2021 William T. Crowe graded certificate (95 Extremely Fine-Superb) cat. \$675(404) 750.00

1914-17 Issues

- 118 ★田 1914 15c gray, two distinct shades, blocks of four, h.r., fine-v.f., cat. \$680(418) 250.00
- 119 ★/★★田 1914 9c, 10c, 11c, 12c (two different shades) and 15c, blocks of four, 11c and one of the 12c n.h., others mixed with two n.h. and two hinged, fine-v.f., cat. \$1,930 (web photo)(432-437) 500.00
- 120 ★/★★田 1914 Perf.10, 10c orange yellow, 12c claret brown, copper red, blocks of four, l.h. or n.h., some pencil notations, fine-v.f., cat. \$545 (web photo)(433,435,435a) 250.00

121	★★田	1914 Perf.10, 12c copper red, two distinct shades, blocks of four, n.h., fine-v.f., cat. \$600 (web photo)(435a)	250.00
122	✉	1915 2c red, type I, tied by machine cancel on South-West News Company corner card addressed to Newtown, Kansas, with Kansas City cds alongside, v.f., with 2019 Crowe certificate, cat. \$1,500(449)	500.00
123	★★	1917 \$2 dark blue, bottom sheet margin single (hinged in selvage), \$5 light green, both stamps n.h., fine-v.f., with 2002 and 2005 PFCs, cat. \$850(479,480)	300.00
124	★★	1917 5c rose, error in middle of block of nine, 2c stamps h.r. and minor flaws, 5c error n.h., fine, cat. \$625(505)	250.00
125	★★田	1917 5c rose, double error in middle of block of twelve, vertical pair, 2c stamps h.r. and minor flaws, errors n.h., fine, cat. \$1,250(505)	400.00
126	★★田	1917 5c rose, double error in middle of block of twelve, vertical pair, 2c stamps h.r., 5c errors n.h., fine, cat. \$1,250(505)	400.00

1917-29 Issues

127	★★田	1917 5c rose, single error in 2c sheet of 100, n.h., some gum skips away from the error and its surrounding stamps, fine (catalogued as an error in a block of nine) cat. \$1,000 (web photo)....(505)	400.00
-----	-----	--	--------



128	★★	1918 \$5 deep green & black, n.h., large, even margins all around, with 1999 PFC, also 2022 PSE certificate, graded "Superb 98" (SMQ \$2,650)(524)	1,500.00
129	★★	1918 \$5 deep green & black, n.h., with 2009 PSE certificate, graded "XF 90" (SMQ \$550)(524)	250.00
130	★★	1918 \$5 deep green & black, top Plate No. single, stamp n.h. (hinged in selvage only), with 2016 PSE certificate, cat. \$340(524)	150.00
131	★★	1920 \$2 carmine & black, n.h., with 2009 PSE certificate, graded "XF 90" (SMQ \$475)(547)	250.00



132	P	1922 ½c-50c, twenty large die proofs, die sunk on card, most 152x120mm (two 152x114), india slightly trimmed, some with slight toning, otherwise fine-v.f. and rare group of large die proofs, cat. \$22,000(551-570P1,622P1)	5,000.00
133	★★	1926 2c carmine, joint-line pair, n.h., fine, with 1977 PFC, cat. \$500(599A)	150.00



124



125



126



154



133



136



137



143



144



145

134	★★田	1926 White Plains souvenir sheet, n.h., fine-v.f., cat. \$500 (web photo).....(630)	150.00
135	★★田	1926 White Plains souvenir sheet, n.h., well centered, v.f., cat. \$500 (web photo).....(630)	200.00

1930-79 Issues

136	☒	1938 \$5 Coolidge, plate block of four on cacheted FDC, v.f., cat. \$600.....(834)	150.00
-----	---	--	--------

Modern Issues

137	★★田	1977 13c Pueblo Pottery, se-tenant block of twelve, imperf. vertically, n.h., v.f. and scarce multiple (catalogued as three blocks of four) cat. \$3,300(1709b)	750.00
138	★★田	1979 15c John Paul Jones, pane of ten, imperf. vertically, n.h., v.f., cat. \$625 (web photo) ...(1789c)	250.00
139	★★田	1979 15c John Paul Jones, imperf. pane of 30, n.h., v.f. (web photo)(1789P)	250.00
140	★★田	1981 Christmas, imperf. sheet of fifty, n.h., v.f. (catalogued as 25 imperf. pairs) cat. \$4,375 (web photo)(1940a)	1,000.00
141	★★田	1996 James Dean, 32c imperforate pane of 20, n.h., v.f., cat. \$1,250 (web photo)(3082a)	350.00
142	★★田	2005 Modern American Architecture, orange yellow omitted, self-adhesive pane of 12 in original sealed wrapper from the Post Office, v.f., cat. \$400 (web photo).....(3910M)	100.00

Air Post

143	★/★★	1930 Zeppelin, 65c-\$2.60 set of three, side or top Plate No. singles, \$1.30 h.r., others n.h., v.f.(C13-15)	500.00
144	★	1930 Zeppelin, 65c-\$2.60, set of three, l.h. or h.r., fairly well centered, fine-v.f., cat. \$1,060.....(C13-15)	500.00
145	★★	1930 Zeppelin, 65c-\$2.60, set of three, n.h., last two with sheet margins at top, n.h., v.f., with 2007 PSE certificate for \$1.30, cat. \$1,675(C13-15)	750.00
146	★	1930 Zeppelin 65c-\$2.60 set of three, l.h., v.f., cat. \$1,080.....(C13-15)	500.00
147	★	1930 Zeppelin, 65c-\$2.60 set of three, h.r., fine-v.f., cat. \$1,080.....(C13-15)	500.00
148	★	1930 Zeppelin, 65c-\$2.60 set of three, h.r., fine-v.f., cat. \$1,080.....(C13-15)	500.00



149	★★	1930 Zeppelin, 65c-\$2.60 set of three, marginal Plate No. singles, n.h., last one with dried gum, v.f., cat. \$1,675(C13-15)	750.00
150	★★	1930 Zeppelin, 65c-\$2.60 set of three, n.h., 65c with bottom sheet margin, v.f., cat. \$1,675(C13-15)	750.00
151	(★)	1930 Zeppelin, 65c-\$2.60 three sets of three, mostly regummed, fine-v.f. (web photo)(C13-15)	1,000.00



146



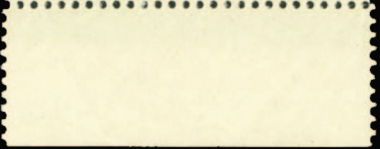
147



148



150



155



167



156



157



159



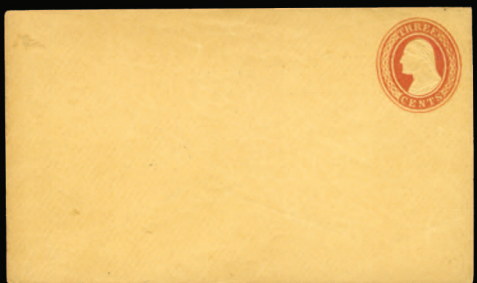
158



162



161



174



- 152 ★★田 1930 Zeppelin, 65c-\$2.60 set of three plate number blocks of six, n.h., nicely centered, fresh color, v.f. set of blocks, with 2012 PSE certificate for the 65c, 2011 PFC for the \$1.30 and 2003 PFC for the \$2.60, cat. \$15,200.....(C13-15) 7,500.00
- 153 ★★田 1933 50c green, top and bottom margin plate number blocks of six, n.h., fine-v.f., cat. \$1,200 (web photo).....(C18) 400.00
- 154 ★ 1938 6c dark blue & carmine, vertical pair imperf. horizontally, l.h., v.f., cat. \$300.....(C23a) 200.00
- 155 ★★ 1971 11c carmine, imperf. horizontal joint line pair, also additional imperf. pair, n.h., v.f., with 1990 PFC for the latter, cat. \$510.....(C82a) 150.00
- 156 ★★ 1991 50c Quimby, vertical pair imperf. horizontally, n.h., v.f., cat. \$900.....(C128a) 300.00
- 157 ★★田 2012 \$1.05 Lancaster County, plate block of four with die cutting omitted from the front, v.f. (catalogued as pairs) cat. \$1,150.....(C150a) 350.00
- 158 ☒ [Flight Covers](#). 1930 (14 Jan) cover originating from Halifax, with Canadian 5c franking, sent via New York, where blocks of 4x5c Beacon and 10c Lindbergh were added for further passage to Uruguay, with additional departure and arrival pmks on back, fine and unusual combination franking 150.00
- 159 ☒ 1938 8c stationery entire envelope to Brooklyn, signed by Amelia Earhart, v.f., with a Schoendorf guarantee signature on back 500.00



- 160 ☒ [Zeppelin Flights](#). 1930 Zeppelin, 65c-\$2.60 set of three, used on 5c stationery entire (legal size) cover from New York (May 7), via Lakehurst (June 1) to Friedrichshafen, with appropriate cachets and "This article made the complete round trip via Graf Zeppelin" handstamp, cover tears and creases at right, just through \$2.60, otherwise fine-v.f., scarce complete set on one cover .(C13-15) 500.00
- 161 ☒ 1930 Zeppelin, 65c-\$2.60 set of three, used on three separate covers, 65c with pair of 10c Postage Dues, appropriate cachets, \$1.30 with small piece excised from backflap, some creases away from the stamps, fine-v.f.(C13-15) 500.00

- 162 ☒ 1930 Zeppelin, 65c-\$2.60 set of three, used on Roessler cover (\$1.30 and \$2.60) and Dr. Eckener postcard, with appropriate cachets and markings, including "This article made the complete round trip via Graf Zeppelin" handstamp, fine-v.f.(C13-15) 500.00
- 163 ☒ 1930 Zeppelin, 65c-\$2.60 set of three, used on legal size cover (\$2.60) and two cards, appropriate cachets and pmks, fine-v.f. (web photo)(C13-15) 400.00

Offices in China

- 164 ★田 1919-22 Shanghai surcharges, 2c on 1c, 6c on 3c, 14c on 7c, 16c on 8c, 24c on 12c and 4c on 2c, six different blocks of four, mostly hinged, fine-v.f., cat. \$2,400 (web photo)(K1/18) 750.00

Official Stamps



- 165 P 1873 War, 1c-90c, complete set of large die proofs, die sunk on card (cards slightly reduced), fine-v.f., cat. \$880(O83-93P1) 200.00



- 166 ★ 1879 Treasury, 90c brown, l.h., fresh color, light horizontal crease and repaired perforation at top, otherwise fine example of this rare stamp, seldom seen with original gum, with 2015 PFC, cat. \$10,000(O113) 1,000.00

Officials Specimen overprints

- 167 S 1875 Post Office, 1c black, Specimen overprint inverted, without gum as issued, natural straight edge at left, fine and rare, with 2002 APS certificate, cat. \$2,500(O47Sb) 750.00



- 168 S 1875 State, \$2 green and black, overprinted Specimen in carmine, without gum as issued, fine and scarce, only 32 sold, cat. \$15,000(O68S) 7,500.00

Newspaper Stamps

169	(★)田	1875 5c dull blue, top sheet margin sheet of ten, unused without gum as issued, some perf. separations, cat. \$2,450(PR5)	700.00
170	(★)田	1875 5c dull blue, bottom margin sheet of ten, unused without gum as issued, some hinge reinforcing, fine-v.f., cat. \$2,450 (web photo)(PR5)	700.00
171	P	1875 2c-\$60, set of 24 large die proofs, cards reduced (\$1.92 removed from card), fine-v.f., cat. \$2,400(PR9-32P1)	500.00
172	P	1881 2c-\$60, complete set of Atlanta plate proofs on card in green, fine-v.f., cat. \$960(PR9-32TC4d)	400.00

Locals & Carriers



173	○	1859 Steinmeyer's City Post, 2c black on bluish paper, red handstamp cancel, full margins all around, v.f. and scarce, with 2020 PSE certificate (listed but unpriced in Scott)(4LB19)	1,000.00
-----	---	--	----------

Postal Stationery

174	✉	1853 3c red on buff, unused entire stationery envelope, lightly soiled at left, still v.f., with 2007 PFC, cat. \$850(U2)	250.00
175	(★)	1853 10c green, unused cut square, v.f., with 2007 Weiss certificate, cat. \$400(U15)	150.00
176	(★)	1864-65 9c lemon, orange and 12c brown, three different unused cut squares, v.f., last one with 2001 PFC, cat. \$775(U66-68)	250.00
177	✉	1921 2c on 4c chocolate on white, four unused entires, flaps with full gum, v.f., each with 2019 Crowe certificate, cat. \$3,200 (web photo)(U462)	700.00
178	E	1951 2c carmine rose on buff, revalued entire with "canceled" and green surcharge at left, v.f. (Undersander UX38Eb, \$1,500)(UX38)	300.00
179	✉	Air Post. 1952 6c on 5c carmine, unused entire envelope, v.f., with 2007 PFC, cat. \$1,250(UC23)	500.00
180	S	Officials. 1873 War, 6c vermilion on cream, entire overprinted "Specimen", v.f., with 2001 PFC(UO38S)	150.00
181	(★)	1875 War, 30c red on cream, full corner, 35x37mm, v.f., with 1989 APS certificate (catalogue value does not include premium for full corner) cat. \$675(UO69)	250.00

Post Office Seals

182	P	1872 Post Office Department in brown, large die proof, die sunk on card, 138x216, v.f., cat. \$1,750(OX1P1)	500.00
-----	---	---	--------

Revenue Stamps



183	P	1914 Documentary, ½c-80c, set of eleven small die proofs on wove paper, few thins, otherwise fine-v.f., possibly unique, listed but unpriced in Scott(R195-205TC2b)	1,500.00
-----	---	---	----------



169



171



178



172



175



176



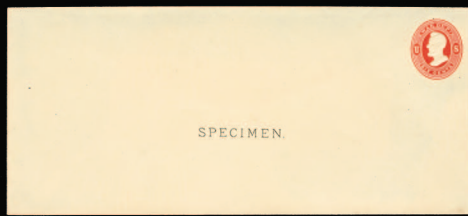
181



190



179



180



182



185



188



195



193



194



196



197



199



200



210



212



204

Duck Hunting Permit Stamps



- 184 ★★田 1935 \$1 Canvasbacks, top margin plate number block of six, n.h., well centered, bright color, v.f., cat. \$12,500.....(RW2) 3,000.00
- 185 ★★田 1938 \$1 light violet, block of four, n.h., well centered, fresh, v.f., cat. \$1,700(RW5) 500.00
- 186 ★★田 1940-56 \$1 sepia, \$2 black, blocks of four, the latter with Plate No., n.h., fine, cat. \$1,340 (web photo).....(RW7,23) 300.00
- 187 ★★田 1942 \$1 violet brown, bottom Plate No. blocks of four and "three", n.h., v.f. (catalogued as seven singles) cat. \$1,575 (web photo).....(RW9) 500.00

CONFEDERATE STATES OF AMERICA

Postmasters' Provisionals

- 188 ㊟ 1861 5c red, small faults, tied by black Memphis cancel on cover, fine appearance, with 2019 Crowe certificate, cat. \$1,750.....(56X2) 250.00

General Issues

- 189 ★/★★田 1862 5c light blue, De La Rue Printing, sheet of 100, all but two stamps n.h., pos. 99 with sealed tear, other minor wrinkles, still fine-v.f sheet (catalogued as 25 blocks of four) cat. \$2,500 (web photo).....(6) 500.00

UNITED STATES POSSESSIONS

GUAM

- 190 ○ 1899 1c-\$1, complete except for 10c type II, used, fine-v.f., cat. \$1,790.....(1/12) 500.00



- 191 ㊟ 1901 registered cover to Germany, franked with 1c, 2c, 4c, 5c, 6c, 8c and 10c, all with "Guam" violet cancels, with "Feb 6 1901" handstamp and Agana, Guam registration postmark, with arrival on reverse, v.f.(1/8) 750.00

- 192 ☒ 1901 2c and 10c Special Delivery, tied by faint cds on 1905 cover to Everett, Wa., with arrival on reverse, some cover faults, fine (web photo).....(2,E1) 500.00
- 193 (★)田 **Military Mail.** 1930 1c red and black, 2c black and red, blocks of four, unused without gum as issued, fine-v.f., cat. \$850.....(M3-4) 300.00

HAWAII

- 194 P 1876-99 selection of four different plate proofs on india, including 10c Officials, fresh and v.f., cat. \$1,625(36P3,79P3,82P3,O4P3) 500.00
- 195 ☒ 1884 5c blue, unused entire with Wells, Fargo and Co's Express printed in brown, tiny toned spot at left, still v.f.(U4) 300.00
- 196 ○ **Revenue Stamps.** 1894 Kahului Railroad, 5c blue, 50c purple and \$1 gray brown, all canceled by crayon, 50c with additional handstamp cancel, \$1 with tear, otherwise fine-v.f. and scarce 150.00

PHILIPPINES

- 197 ★ **Air Post.** 1926 Madrid-Manila Flight overprints, 2c-10p, thirteen different, l.h. or h.r., various expert signatures, l.h. or h.r., mostly fine, cat. \$3,280(C1-6,10-15,17) 1,000.00



- 198 ★ 1926 Madrid-Manila Flight overprints, 16c olive green, 26c blue green, usual centering, signed Sanabria, Kessler, etc., fine, cat. \$7,800(C7,16) 3,000.00
- 199 ★ 1926 Madrid-Manila Flight overprints, 10p deep green, l.h., fresh and fine, with 1990 PFC, cat. \$1,000(C15) 250.00
- 200 ★ 1926 Madrid-Manila Flight overprints, 10p deep green, h.r., v.f., with 1962 PFC, cat. \$1,000(C15) 300.00



- 201 ★ 1926 Madrid-Manila Flight overprints, 26c blue green, l.h., slightly tropicalized gum as always, deep color, fine, signed Bloch, etc., with 1980 PFC. A rare stamp, only 100 issued, cat. \$5,000.....(C16) 1,500.00

AUTOGRAPHS OF FAMOUS PEOPLE

- 202 **NAPOLEON I, Bonaparte** (1769-1821), Emperor of France, four page letter discussing military matters, signed "NAP", dated 28 November, 1813 at Paris, addressed to Monsieur le Duc de Feltre (Minister of War), with a small attached note bearing corrections in Napoleon's hand, fine and rare document (web photo) 2,500.00

WORLDWIDE STAMPS & COVERS

ALBANIA



203 ★○

1913 Double Eagle handstamps, complete collection of 100+ different, all values represented, including 25pi "Russian green", black handstamp inverted, used on small piece, well centered with excellent perforations, faint toning at left, ex-Lef Nosi, with Rudolf Nosi provenance statement, 2008 Otto Graf and 2022 Sorani certificates. Only 35 issued of this value, including a few inverted overprints. Another major rarity from Albania is the 50pi orange brown, tied on small piece by neat Elbasan 24 June 1913 cds, well centered with neat perforations, certainly one of the finest (if not the finest) of the 16 issued, signed Muller Mark, Diena, etc., with 1939 Dr.Paul Wolf, Hekker's and 1957 Alberto Diena certificates (Mi.B11). Also included are a number of tete-beche (one inverted) pairs, overprints in red, blue and violet, inverted overprints, 1913 Telegraph cover from Tirane to Durres, Kruja to Durres, Lushe to Fier (each with Holcombe certificate), unused stationery entires, Elbasan, Qukes and Shijak markings (signed Dr.Peters), plus some modern issues, Air Post set (Mi.210-16, n.h., signed Prindushi, etc.). A splendid holding of the first Issue Albanian Eagles, many ex-Lef Nosi, signed and mostly with certificates (many just issued in 2022 by Sorani), (Mi.€150,000+)

50,000.00



205



206



207



208



209



213



214



215



216



218



219



217



223



224



221



222



228



225



226



227

- 204 ○ 1913 10pa blue green, 20pa carmine rose, 1pi ultramarine, three different, each canceled on piece (Vlone or Qukes pmks), fine-v.f., signed Prindushi, Dr.Peters, A.E.I.P., cat. \$725(5,6,7) 250.00
- 205 ★ 1913 1pi black, white laid paper, sewing machine perforations, unused without gum as issued, v.f., signed Prindushi, Dr.Peters, A.E.I.P. (Mi.€650) cat. \$575.....(20a) 250.00

ARGENTINA

- 206 ✉ 1873 (20 Aug) outer FL from Buenos Aires to Genova, with 5c red and Italian 2L postage due alongside, French "Plata Marseille" entry pmk, charged "20" (decimes), Genova arrival pmk on back, minor cover tears 150.00
- 207 ✉ 1873 outer FL from Buenos Aires to Genova, franked with 5c Rivadavia, tied by departure cds, French "Buenos Ayres Paq. Fr. No.5" Octagonal maritime and framed "F.56" in blue, charged "10" (decimas) and with Italian 1Lire postage due added in Genova, usual filing fold away from the stamps, fine Argentina/Italy Postage Due combination 250.00
- 208 ✉ 1876-77 cover and FL to France, franked with single 5c and pair of 4c, the latter with red "Ship Letter" and "Bresil Amb. Calais" exchange marking, sent via Pernambuco, with various tax and transit pmks, fine pair of covers from Buenos Aires to France(20,23) 250.00
- 209 ✉ 1877 cover from Buenos Aires to Italy, franked with 5c and 3x1c, tied by Cordoba departure cds, sent via Buenos Aires, charged 1Lire 70c on arrival in Napoli, with 10c, 60c and 1Lire added on back, cover worn and roughly opened, otherwise fine and interesting usage 250.00
- 210 ★ **Air Post.** 1930 Zeppelin overprint in black inverted, 50c gray black, h.r., v.f., signed Bloch, with 1982 Friedl certificate, cat. \$500(C21a) 250.00



- 211 ★★ 1930 Zeppelin overprint in green, complete set n.h., fine-v.f. (catalogued as hinged) cat. \$766(C25-29) 500.00

AUSTRIA - Lombardy Venetia

- 212 ○ 1850 15c red, Handpaper, type III, bottom sheet margin single, canceled Brescia, v.f., with 2019 Ferchenbauer card certificate (3H III) 200.00
- 213 ✉ 1850 30c red brown, v.f., tied by an attractive "Brescia" straight-line datestamp on FL to Milan, v.f., signed Diena(5) 100.00
- 214 ○ 1858 2s yellow, type I, used, neat Padova cds, fresh and fine, with 2018 Ferchenbauer opinion, cat. \$800(7a) 200.00

BELGIUM

- 215 ★★ 1944 Lion Rampart complete set of 32 imperforate horizontal pairs, n.h., v.f.(322-53var) 500.00
- 216 ★ **Semi-Postals.** 1928 Orval Abbey, set of nine with unofficial overprint, l.h., fine-v.f., cat. \$650.....(B69-77var) 250.00
- 217 ✉ 1933 registered cover from Antwerp to Germany, with single 5fr+5fr Sanatorium at Waterloo, tied by departure pmk, with Chemnitz arrival on back, scarce high value franking on cover(B131) 150.00

BOLIVIA

- 218 ★ **Air Post.** 1924 10c, 25c and 2b imperforate singles, l.h., v.f.(C1,3,6var) 250.00
- 219 ★ 1925 50c orange, red "Correo Aereo A La Paz" overprint inverted, h.r., tiny gum stains, otherwise fine, with 2001 PFC(San.3a) 250.00



229



238



245



248



230



231



234



235



239



242



243



244



246



254



255



263



257



256



264



220	★	1930 Zeppelin, 10c vermillion and black, overprinted in brown, well centered, h.r., v.f., signed Kessler, Sanabria, also Herbert Bloch, with 1971 Friedl certificate. A rare stamp, only 50 issued, cat. \$2,500	(C13) 1,000.00
221	★	1930 15c double overprint, one inverted, 25c inverted overprint, v.f., only a few exist	(C14,15var) 500.00
222	★	1930 set of three, overprints inverted, h.r., fine-v.f., signed Sanabria, Champion, etc., cat. \$1,050 ...	(C24a-26a) 250.00

BRAZIL

223	✉	1847 FL from Rio Grande de Sul, via Falmouth to Le Havre, with red "Ang. Calais" French entry and Falmouth July 19, 1847 transit, fine Trans-continental cover from Brazil	250.00
224	✉	1855 British Post Office, printed matter FL from Bahia to Genova, "Per Avon" (RMSP Steamer), double arc "Bahia Oc 20 1855" in blue, London transit and framed "Table by Art.10", red French entry and Genova arrival pmks, v.f.	250.00
225	✉	1864 FL from Hamburg to Santos, sent unpaid via Bordeaux, with oval Hamburg dispatch datestamp (Sep 21) and "TT38" alongside, also "F/21" accountancy mark, French entry in red, framed "860" and Brazilian arrival pmk on back, fine incoming letter with a combination of scarce due markings ..	250.00
226	✉	1875 (9 Apr) cover from Rio de Janeiro to Bordeaux, franked with 200r black, tied by black cork cancel, with departure cds alongside, framed "GB 1f60c" and "24" (decimes) due marking, red London transit on back, 2 May arrival, small cover tears and toning, otherwise fine	(59) 150.00
227	✉	1876 FL from Pernambuco to Bordeaux, with Southampton Packet Letter cds and red Amb. Calais French entry pmk, charged "17" (decimes), with additional "1.20" in crayon, "T" handstamp alongside. Also included is a cover franked with 100r green, used from Pernambuco to Paris, with Pernamboul 9 April entry pmk, fine-v.f.	250.00
228	★	Air Post. 1927 50r on 10r right sheet margin example, surcharge inverted on stamp and on selvage, unused without gum, also 200r on 5000r and 500r on 50r double surcharges, h.r., fine-v.f., cat. \$750	(C1a,4a,C7a) 500.00
229	★	1927 500r on 10r, also red 500r on 50r, h.r., v.f., first one signed Sanabria, etc., scarce, cat. \$480..	(C6A,7b) 250.00
230	✉	Flight Covers. 1930 (17 May) registered VARIG flight cover to Porto Alegre, franked with "R700" and "R" surcharges, tied by Rio Grande pmks, backstamped, also accompanied by a Varig receipt .	250.00

BULGARIA

231	✉	1845 (16 Nov) FL from Varna to Livorno, with 19 November Constantinople transit pmk, "J.A. Turchia" alongside and "Austria No.7", ms forwarding and black disinfection handstamp (with slits) of San Rocco, Livorno, red disinfection slip applied by Austrian Sanitary station at Semlin, arriving Livorno 8 Dec., 1845, small paper erosion on front, otherwise a fine and unusual letter from Varna, via the Austrian Post Office	250.00
-----	---	--	--------

CAMBODIA

232	P	1968 Human Rights, 3f signed artist die proofs in purple and in brown, v.f. (web photo)	(201P) 150.00
233	P田	Air Post. 1957 100r imperf. trial color proof sheet of 25, n.h., v.f. (web photo)	(C14P) 150.00

CHILE

234	✉	1840 (ca) printed matter wrapper from Valparaiso to Bordeaux, oval forwarder's departure handstamp, with a rare "GB 2F96c Pk" accountancy mark, charged "80" (decimes) due	250.00
-----	---	--	--------

CHINA

- 235 ☒ 1864-72 three FLs, two from Shanghai to Amsterdam, one from Hong Kong to Marseilles, various markings, including “Stemssen & Co. Hong Kong”, blue Hong Kong departure, French entry and Amsterdam arrival pmks, charged “60” and “18” (decimes), two with “GB 1F 66c” and “GB 1F 62 4/10c” accountancy marks 500.00



236

237

- 236 ★ 1897 Small Numerals surcharges on 3c-24c complete set of 10, l.h. or h.r., first with small stain, otherwise fresh, fine-v.f., cat. \$2,000.....(28-37) 1,000.00
- 237 ★ 1897 Large Figure surcharges on 1c-24c Dowagers, complete set of nine, l.h. or h.r., fine-v.f., cat. \$2,675(47-55) 1,000.00
- 238 ★★ 1900 1c ocher, horizontal pair imperf. between, also vertical strip of three, imperf. horizontally between stamps, n.h., fine-v.f. (catalogue value for hinged pairs imperf. between) cat. \$700.....(111a,111b) 600.00
- 239 ☒ 1937 (14 May) Karl Lewis hand painted cover to Washington, franked with five different adhesives, tied by Shanghai departure pmks, with typical illustrated cachet used for covers from Shanghai, v.f., typed “N” and Lewis sake gourd logo handstamped in blue over the backflap, v.f. 250.00

Manchuria



- 240 ★★ 1927 ½c-\$5 overprints, “blocks of three”, n.h., \$1 and \$5 with partial imprints, fine-v.f., scarce unhinged(1-20) 1,000.00

Offices in Tibet



- 241 ★ 1911 3p-2r surcharges, complete set of eleven, l.h. or h.r., fine-v.f., cat. \$3,255(1-11) 1,500.00

COLOMBIA

- 242 ☒ 1853 (15 Feb) FL to Paris, with oval "Medellin Franca" and "1½" in red, via Cartagena, with French entry mark and charged "21" (decimes), with Paris arrival on back 150.00
- 243 ☒ 1876 (20 Oct) mourning cover from Cartagena to Bordeaux, clear British Post Office "Colon Oct 22" and straight-line "Ship-Letter", with corresponding "Southampton Ship Letter" cds, French entry pmk, charged "T" (19 decimes) to France, also "58" in blue crayon, fine 250.00
- 244 ☒ 1878 (1 Jan) printed matter FL from Barranquilla to Bordeaux, Savanilla 16 Jan. departure cds, "T" handstamp and ms charge marking, red French entry, fine. Also included is a small cover with 10c franking, tied by oval Bogota, with Savanilla transit alongside, sent via London to Hamburg 250.00
- 245 ○ **Air Post.** 1919 2c carmine rose, used, signed Herbert Bloch, etc., with 1974 Friedl certificate, cat. \$1,200(C1) 250.00
- 246 ○ 1919 2c carmine rose, used on piece, v.f., with newspaper clipping of Knox Martin, the pilot who flew from Barranquilla to Puerto Colombia, cat. \$1,200(C1) 350.00



- 247 ★ 1920 10c "Woman and Boy Watching Plane", unused without gum as issued, margins all around, beautiful colors, fresh, v.f., with 1965 Philatelic Foundation certificate. Only 38 unused examples have been recorded (Compania Colombiana de Navegacion Aerea was founded September 28, 1919. In February 1920, the C.C.N.A. obtained a franchise to fly between Cartagena and Barranquilla and was authorized to issue its own stamps. This was facilitated by overprinting Compania Colombiana de Navegacion Aerea Porte Aereo and surcharging \$0.10 on the Curtiss Aereo Plane & Motor Co. advertising labels. Less than 100 of each of the nine types were produced. These stamps were used on two first flights on February 22, 1920 from Cartagena and returning March 4 from Barranquilla. In July 1920, the air mail concession was passed to SCADTA. The C.C.N.A. ceased to operate in April, 1922) cat. \$4,500(C2) 2,500.00
- 248 ○ 1920 10c Woman and Boy Watching Plane, used on piece, upper left corner clipped (not touching design), fine and rare stamp, cat. \$1,750(C2) 750.00



249



250

- 249 (★) 1920 10c Flier in Plane Watching Biplane, unused without gum as issued, large margins all around, rich colors, fresh and v.f. Only 53 unused examples have been recorded, cat. \$4,500(C5) 1,500.00
- 250 ★ 1920 10c Lighthouse, unused without gum as issued, large margins all around, rich colors, fresh and v.f., signed Sanabria. Only 50 unused examples have been recorded, cat. \$4,500(C6) 2,500.00



251



252

- 251 ★ 1920 10c Condor on Cliff, unused without gum as issued, large margins all around, bright colors, skillfully repaired (left margin added), v.f. appearance and rare. Only 36 unused examples have been recorded (virtually all known copies are cut in at left), cat. \$8,000(C8) 1,500.00
- 252 ★ 1920 10c Plane at Rest, unused without gum as issued, large margins all around, typical plate crack at lower left, v.f., with 1965 Philatelic Foundation certificate. A rare stamp, only 41 unused recorded, cat. \$4,500(C9) 2,500.00



- 253 ☒ 1920 10c Ocean Liner, tied by violet "Compania Colombiana de Navegacion Aerea Agencia de Cartagena" oval, used in combination with 3c brown on cover from Cartagena (22 Feb) to Barranquilla, additional departure pmk alongside, v.f., with 23 February arrival pmk on back, with 1991 Alex Rendon certificate, cat. \$2,000(C10) 1,500.00
- 254 ★ 1921 10c on 50c green, double overprint inverted, h.r., some gum toning, fine and rare stamp, signed Oriol(C18var) 500.00
- 255 (★) 1921 30c on 50c green, unused without gum, thin, fine appearance, signed Rendon, cat. \$925(C20) 250.00
- 256 ○ 1921 30c on 50c green, roughly separated at right, used, fine, cat. \$575(C20) 150.00
- 257 ★ [Consular Air Post - E \(Spain\)](#). 1923 overprinted "E" (Espana), complete set, including Registration stamp, h.r., fine-v.f., signed Roumet, Silombra(CLE24-34,CFLE1) 200.00

CROATIA

- 258 ★★ 1943 Famous Croats, 1k (3), 2k (3) and 3.50k (4), ten different imperforate singles, various colors, n.h., v.f. (Mi.103-105U, €600) (web photo)(56-58var) 100.00
- 259 ★★ 1943 Famous Croats, 1k, 2k and 3.5k imperforate horizontal pairs, two of each value, n.h., v.f. (Mi.103-105U, €720) (web photo)(56-58var) 100.00
- 260 ★★田 1943 Famous Croats, 1k, 2k and 3.5k imperforate blocks of four, n.h., v.f. (Mi.103-105U, €720) (web photo)(56-58var) 100.00
- 261 ★★田 1943 Famous Croats, 1k dark blue, 2k olive black and 3.5k carmine brown, imperforate blocks of four, n.h., v.f. (Mi.103-105U, €720) (web photo)(56-58var) 200.00
- 262 ★★田 1943 Famous Croats, 1k, 2k and 3.5k imperforate blocks of four, two different colors of each value, n.h., v.f. (Mi.103-105U, €1,440) (web photo)(56-58var) 300.00

CUBA

- 263 ☒ 1856 stampless letter from Havana to Paris, with framed "GB 1F60c" and "Etats Unis Pack. Brit Ang.", red New York Dec.24 and forwarding endorsement "Sanchez & Dobs" on back, also 1878 FL from Havana to France, 50c franking, various transit and arrival markings 150.00
- 264 ☒ 1857 (7 Mar) FL from Havana, "Per Ericsson" to Paris, red New York March 14 transit, "GB 40c" accountancy and Calais entry pmks, red "Forwarded by Renauld, Francois Cie" in oval and London transits on back, 31 March Paris arrival, fine "Ericsson" steamship letter 150.00
- 265 ☒ 1870 outer FL showing "M. Fernandez Habana" handstamp, addressed to Paris, with New York Jan 29 and two different "G.B. 3f.50c" and "G.B. Abt.38" accountancy markings, crayon markings, with red London transit pmk, fine cover 250.00
- 266 ☒ 1875 (18 Dec) cover from Havana, per "City of Vera Cruz" to Saxony, franked with pair of 25c ultramarine, tied by New York transits, framed "Schonbach" arrival datestamp on back 150.00
- 267 ☒ 1876 (29 Jan) outer FL from Havana to Lyon, franked with 50c blue, with French Packet "Etats Unis 2 Brest" exchange office and "Ochoa Llanda Havana" forwarding agent's datestamp at bottom, Paris transit and Lyon arrival pmks on back 150.00
- 268 ☒ 1881 (26 Feb) cover to France, franked with 5c gray, tied by Havana oval barred handstamps, with corresponding dispatch cds alongside, violet "Havana T" tax handstamp, charged postage due on receipt and struck on entry with rare "Union. Cherb. A Paris/D" (14 Mar) cds, with Paris arrival pmk on back, fine 500.00

CZECHOSLOVAKIA

- 269 ★ Semi-Postals. 1919 overprints on Austrian Air Post stamps, set of three, l.h., v.f., signed Gilbert, Darmietzel, cat. \$1,000(B37-39) 500.00

DANZIG

- 270 ☒ Air Post. 1932 LUPOSTA overprints, complete set of five used on flown cover from Danzig-Langfuhr to Vienna, with arrival pmk, v.f. (web photo).....(C31-35) 150.00

ECUADOR

- 271 ☒ 1879 cover from Guayaquil,"Via Saint Nazaire" to Bordeaux, Panama transit and "NY.T" due marking, with crayon charge endorsements 250.00

EGYPT

- 272 ☒ 1877 cover to Paris, franked with single 1pi carmine, tied by Poste Egiziane Ismailia cds, with framed "Paquebots de la Mediterranee", charged "T", with red ms due markings on back, Alexandria transit and Marseille entry pmks 150.00



- 273 ★★ 1926 Port Fouad, set of four overprints, n.h., top value with sheet margin at bottom, v.f., with 1998 BPA certificate (catalogued as hinged) cat. \$2,500.....(121-24) 2,000.00
- 274 ★★ Semi-Postals. 1956 2nd Pan-Arab Jamboree, imperforate souvenir sheet of three, n.h., v.f. (B13-15) 750.00



265



266



267



268



271



274



269



276



272



275



277



281



82256



283



284



279



287



288



294



303

ESTONIA

- 275 ☒ 1843 (May-Aug) three FLs, single correspondence to Paris, each with Narva departure two line datestamp in Cyrillic, "Aus Russland Franco-Tout" and red "Prusse Givet" and "A.E.D." (postage paid to destination) handstamp, Tilsit transits and Paris Poste Restante arrival markings on back ... 150.00

German Occupation of Dorpat

- 276 ★★ 1918 20 Pfg on 10k light blue, n.h., fine, signed Dr.Hochstadter, etc. (Mi.1b) cat. €1,000(N1a) 250.00

FEZZAN - Fezzan-Ghadames

- 277 ☒ 1946 Pictorials, complete set of 15, used in 1948 on registered cover from Birtouta to New York, with Registry label and arrival pmks on back(Sass.1-15) 200.00
- 278 ☒ 1946 Pictorials, complete set of 15, tied by 6.12.46 Alger cds on unaddressed cover; also a registered cover with 10c-2fr, eight different, tied by Birtouta pmks, addressed to France, fine-v.f. (web photo).....(Sass.1-15) 200.00
- 279 ★★ 1949 Issue, imperforate sheet margin singles, complete set of 11, n.h., v.f., cat. €1,200(Sass.16-26var) 200.00

FINLAND



- 280 ★★ **Air Post.** 1930 10m gray lilac, error "1830" for "1930", n.h., v.f., with 1995 Gummesson certificate, cat. \$2,500(C1a) 1,000.00
- 281 ☒ **Zeppelin Flights.** 1930 Finland Flight cover from Helsinki to Stockholm, franked with vertical pair of 10M "Zeppelin 1930" overprint, with Friedrichshafen arrival pmk on back, cover with tape stains at sides, otherwise fine-v.f.(C1) 250.00
- 282 ☒ 1931 (18 May) Magdeburg flight card from Helsinki, with 1931 franking (toned), sent via Danzig where 50pf and 1m was added (27 May), with appropriate cachets, fine combination franking 500.00

FRANCE

- 283 ☒ 1771 FL from St. Pierre to Bordeaux, with "Colonies Par Rochefort" entry hs, rated "10" in manuscript, fine 150.00
- 284 ☒ 1805 (26 Feb) FI from Philadelphia to Bordeaux, with three line "Poste Maritime Bordeaux", charged "2" (decimes), fine early maritime marking 150.00



- 285 ☒ 1846 (14 Dec) FL to Lima, endorsed "Per Paket Anglais", Voie de Panama, red "Panama 25 Jan 43" (year date error), fine and rare usage 500.00
- 286 ☒ 1847-52 two FLs on exhibition page, sent from Le Havre to Lima, completely described, showing "Foreign Paid" applied in Southampton, Panama transits and Callao arrival markings, fine-v.f. (web photo) 250.00



290



291



292



293



295



297



296



298



299



300



310



314



311



312



315



319



320



316



317

287	○	1849-50 40c orange, type II, wide numerals, used, bright color, margins all around, faint thins, fine appearance, signed Senf, cat. \$5,250(7b)	400.00
288	○	1849-50 1fr brown carmine, two copies, slightly different shades, used, margins all around, one "1773" small numerals cancel, v.f., the latter with Sismondo certificate, cat. \$1,300(9)	250.00
			
289	○	1853 1fr deep lake, light postmark, margins all around, canceled on piece, v.f., signed Calves, Buhler, etc., with 1998 Soluphil certificate (YT 18a, €4,700) cat. \$3,400(21c)	750.00
290	✉	1856 (23 Feb) FL franked with 10c and 20c Empire, endorsed "Per Ericsson", sent from Le Havre to New York, "6" in circle, red "Bureau Maritime" and "P.P.", fine Steamship letter	150.00
291	✉	1857 two FLs from Paris, via Panama to Islay, Peru, each with London Paid transits, Paris a Calais pmks on back, fine	150.00
292	✉	1857 (1 Jan) stampless cover from Paris to New York, with "Paris a Calais 1 Janv 1857", with Paris Jan 4 and Boston Br.Pkt Jan 21 arrival; also a FL with 1 Jan departure, franked with 3x40c and 10c Empire, "Steamer Anglais Liverpool" and Boston 21 Jan arrival, both covers used on the First Day of Issue of the "Empire" stamps, rare	500.00
293	✉	1857 (23 Jan) FL from Paris to New York, endorsed "via Havre per Alps", franked with 20c and 40c Empire, tied by "D" Lozenges, Paris departure cds, large "6", also on back red "Bureau Maritime Le Havre" and black "Paris Au Havre" cds, scarce cover carried on westbound voyage of the Steamship "Alps"(15,18)	150.00
294	★	1862 Re-issue, 15c bright green, unused large part original gum, h.r., v.f., with 2016 Sismondo certificate	300.00
295	✉	1869 (7 Jan) FL from Paris to Valparaiso, Chile, franked with 20c and 80c Empire, tied by Paris Star "3", Paris Rue de Madeleine departure cds, "Panama" transit, French Packet Ligne "A" on back(32,33)	150.00
296	★★	1870-71 Bordeaux Issue, 5c green, block of four, h.r., beautiful color, margins all around, good color, faint hinge toning showing through at bottom, otherwise v.f., signed Diena, Roumet, etc., cat. \$1,000.....(41)	400.00
297	○	1870-71 Bordeaux Issue, 5c green, five copies, used, distinct colors, margins all around, small thins, fine appearance	400.00
298	✉	1875 (27 May) late Transatlantic stampless outer FL from New York, with "unpaid" hs, blue "Etats Unis 2 Cherbourg" exchange office mark, "75" (centimes) due in red, also 1872 small cover from Hyers to New York, franked with pair of 30c Empire, tied by large "1818" numerals, with departure alongside, oval "Fr 2F" and red "Affranchisement Insuffisant" handstamps, "14" credit to England handstamp, fine pair of letters	150.00
299	✉	1881 incoming outer FL to Paris, with French Packet Le Havre entry pmks, additional Paris arrival markings on reverse, fine	150.00
300	★★	1925 Paris Exhibition, perf. block of four from the souvenir sheet of four, n.h., v.f., cat. \$900 .(226b)	200.00
301	★★	1949-64 Centenary of the first French Postage Stamp, se-tenant sheet of 40, also two sheets of 10, n.h., folded between stamps, one with various First Day cancels, plus PHILATEC sheet of eight, n.h., v.f., cat. \$1,440 (web photo)(615a,624a,1100)	250.00
302	★	1958 15fr green & blue, horizontal pair, left stamp "FFrancaise" variety, l.h., also 1962 Paquebot, variety "black chimneys", v.f. (YT 1162a,1325b, €365) (web photo).....	100.00
303	★★	1988 Thermal Sprints, 2.20fr error, inscriptions red instead of blue, n.h., v.f., with Calves & Jacquart certificate (YT 2556a) cat. €600(2136var)	250.00

304	P	Semi-Postals. 1939 40+60c Fragonard, two imperf. deluxe proof sheetlets, one in issued color, with portrait alongside (“avec remarque”), the other in violet, also two signed Artist Die Proofs in black and in red brown, all v.f. (YT/Maury 466, €1,400) (web photo)	300.00
305	★★田	1939 Red Cross, sheet of 25, n.h., v.f. (YT 422, €425) cat. \$325 (web photo)(B81)	100.00
306	★★田	1939-46 Postal Museum, 40c+60c and 2+3fr red brown, imperforate sheets of 25, n.h., v.f. (YT 446a,753b) cat. €10,625 (web photo).....(B92,104var)	1,200.00
307	P	1946 For the benefit of Postal Museum, imperf. deluxe proof sheetlet with portrait alongside (“avec Remarque”), plus two signed artist die proofs on beige and green papers, v.f. (YT/Mauri 743, €1,150) (web photo)	200.00



308

309

308	★	Air Post. 1928 Ile de France 10fr on 90c red, l.h., v.f., signed Jean Motz, Robineau, cat. \$2,400(C3)	750.00
309	○	1928 Ile de France 10fr on 90c red, used, fine, with 2011 Sismondo certificate, cat. \$1,800.....(C3)	500.00
310	★	1936 Plane over Paris, complete set, l.h., v.f., top value signed Brun, cat. \$976(C8-14)	200.00
311	★★	1936 50fr Burelage, upper left sheet corner margin single, n.h., v.f., cat. \$1,700.....(C15)	300.00
312	★★	1936 50fr Burelage, lower right sheet corner margin single with 15 June 1936 handstamped date at bottom, n.h., faint overall gum toning, otherwise v.f., cat. \$1,700.....(C15)	200.00
313	P	Postage Dues. 1900 10c black, 15+10c horizontal gutter se-tenant pair, also 15c+10c horizontal gutter strip of four, trial proofs (Essai de l'imprimerie Nationale), unused without gum as issued, v.f. (web photo).....	250.00
314	★	Parcel Post. 1937 “Valeur Declaree” 75c, one stamp with double overprint and a pair, one with overprint “C”, fine-v.f. (YT 112b,c) cat. €410(Q100var)	150.00
315	★	1937-38 2.35fr on 1.65fr, plus 1938 surcharges set of four, l.h., fine-v.f., cat. \$1,050(Q129,146-149)	300.00
316	✉	Ship Mail. 1866 cover to France, with “Mers du Suid Amb. Calais” octagonal entry marking (used for mail from South America), charged “12” (decimes), fine and very rare item	250.00
317	✉	1876 cover to Maryland, with “Ship’s Letter U.S.S. Hartford” endorsement, handstamped “U.S.Charge to Collect” and “.26 Cents” alongside, additional “80c” in blue, with “T” and French entry 16 May English Packet cds, New York May 28 pmk on back, fine and interesting cover	150.00

French Offices in China



318	○	Postage Dues. 1903 15c blue, violet “A Percevoir”, canceled on piece, fine and scarce stamp, signed Brun, Calves (YT 8a, €1,250) cat. \$1,250.....(J9)	500.00
319	○	1903 15c blue, red “A Percevoir”, canceled on piece and tied by Shanghai cds, fine, cat. \$325.(J16)	150.00

French Offices in the Turkish Empire

- 320 ☒ 1858 complete FL from Constantinople to France, with three line “Lettere Arrivate Col Vapore Dal Levante” hs, red Culoz entry pmk, triangular “A25” accountancy mark and charged “10” (decimes), with Trieste and Lyon transit and arrival pmks 250.00

French Consular Post - Argentina

- 321 ☒ 1865 (15 Jan) cover with contents from Buenos Aires to Hanover, Germany, octagonal “Conflagrative Saintonge” maritime pmk, framed “F.39”, showing “Aus Frankreich” and Asendorf arrival pmks on back 150.00
- 322 ☒ 1868 cover franked with 80c Empire, tied by Anchor in dots, with “Buenos Ayres Paq. Fr. K. No.4” maritime cds, addressed to Hamburg, boxed “Affranchissement Insuffisant” in red, “F. 41” and Hamburg arrival on back, peripheral cover faults, fine usage from Buenos Aires 250.00

FRENCH COLONIES

Cilicia

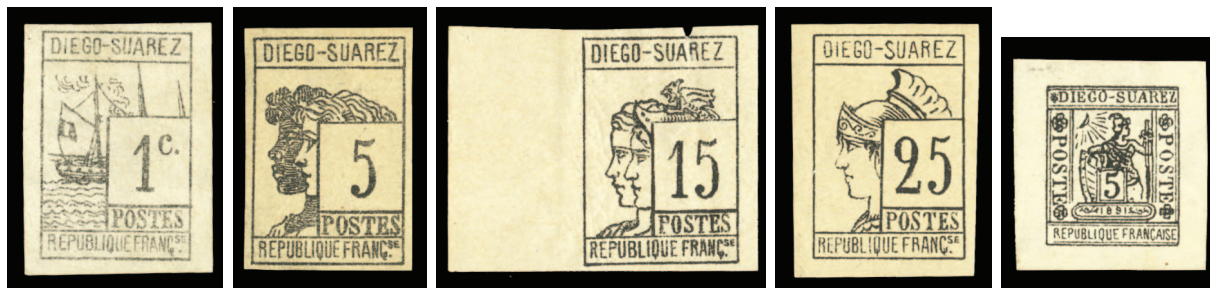


- 323 ★★ 1920 100pi on 5fr dark blue & buff (Type Merson), n.h., v.f., with 2017 Calves & Jacquart certificate (YT 88, €880) (catalogued as hinged) cat. \$900.....(109) 750.00

French Congo

- 324 P田 1900 Woman, imperforate proof sheetlet of 12, value tablets blank, v.f. 250.00

Diego Suarez



- 325 ★(★) 1890-91 1c-25c black, also Sword & Shield 5c black, unused, first and last without gum, others h.r., 15c with a small nick at top margin, otherwise fine-v.f., signed Bernichon, Calves, Brun, etc., with 2016 Calves & Jacquart certificates for No.6,7 (YT 6-10, €3,130) cat. \$2,935.....(6-10) 1,000.00
- 326 ○ 1892 30c brown, used, well centered, fine and rare stamp, signed Brun, Calves, etc., cat. \$925.(21) 300.00
- 327 ○ **Postage Dues.** 1892 60c black, 1fr maroon, each canceled on piece, v.f., signed Kohler, rare (YT €2,450) cat. \$2,275.....(J12,13) 750.00

French Guiana

- 328 ★ 1892 overprints on 30c Ceres and Type Sage, 40c, 75c (2) and 1fr, h.r., fine or better, some signed Champion, etc., cat. \$900.....(13,15-17) 250.00

Gabon

- 329 ○ 1888 15c on 10c black, lavender, neat Libreville cds, good color, signed Bernichon, etc., with 2017 Calves & Jacquart certificate (stating “tiny tear”), rare stamp (YT 6, €1,500) cat. \$1,500(6) 250.00

Ivory Coast

- 330 ★ **Parcel Post.** 1903 surcharges, five different, two of last, l.h., few expert signed, v.f., cat. \$840(Q21,24,26-27,35) 250.00



321



322



324



326



327



328



329



330



331



332



333



335



334



340



341



343

Madagascar

331 ★ 1903 1c-5fr, complete set of 15, h.r., fine-v.f., cat. \$448.....(63-77) 100.00

Martinique

332 ☒ 1863-65 two FLs from St. Pierre to Marseilles and Paris, each with departure pmk, "Colonies Fra V.Angl" and "Fr.Angl. Amb Calais" (red) entry markings, charged "8" and "12" (decimes), fine 150.00

French Morocco

333 ○ 1893 5c black (postage due) overprinted in red, neat Tanger cds, well centered, v.f., signed Roger Calves, with 2017 Calves & Jacquart certificate (YT 9, €1,300) cat. \$1,200(9) 500.00

New Caledonia

334 P☒ 1973 Mask, imperforate sheet of 100 trial colors, n.h., v.f..... 100.00

Tahiti

335 ★ 1893 1c black, lilac blue, h.r., fine, signed Brun, cat. \$950(5) 300.00

336 ☒ 1902 cover with Chinese characters, from Papeete to San Francisco, franked with pair of 25c Group Type, tied by cds, with arrival pmks on back (in the mid 1800s, Chinese laborers were brought to Tahiti to mine phosphate. This cover is addressed to a Chinese company in San Francisco). Also included unaddressed cover franked with 10c on 40c red, type II, canceled 23 March 1903, fine (web photo)..... 150.00

337 ☒ 1923 (3 June) Chinese red-band cover with red "Moorea Oceania" departure pmk, date filled-in by hand, arriving in Papeete 5 June, charged 10c in blue crayon, with the addition of diagonal half of 1fr postage due, paying 50c postage due. Since the inter-Colonial rate was 25c, it is possible that the cover came from outside the Colony, arriving in Moorea and then sent to Papeete. The 50c due represents double the deficiency and there was a shortage of 50c postage dues, fine (web photo) .. 200.00

338 ☒ 1923 (30 May) cover with "Moorea Oceania" departure pmk, date filled-in by hand, arriving in Papeete 2 June, charged "T", with the addition of diagonal half of 1fr postage due, paying 50c postage due. Since the inter-Colonial rate was 25c, it is possible that the cover came from outside the Colony, arriving in Moorea and then sent to Papeete. The 50c due represents double the deficiency and there was a shortage of 50c postage dues, fine (web photo) 150.00

339 ☒ 1960 cover from the President of France to the Mayor of Papeete, while at the Crillon Hotel in Paris, with official markings, fine (web photo) 100.00

340 ★ **Postage Dues.** 1893 3c, 4c black, h.r., v.f., signed Calves, Roumet, etc., cat. \$1,100.....(J16,17) 300.00

341 ○ 1893 15c, 20c black, used, v.f., signed Calves, cat. \$1,100.....(J20,21) 300.00



342 ★ 1893 20c, 60c and 1fr, three different, l.h. or h.r., v.f., signed Brun, Calves, etc., cat. \$1,650(J21,24,25) 500.00

Tunisia

343 P 1955 15fr printer's control trial color proof in sepia, also Malagasy 1960 500fr Air Post proof in sepia, v.f., only 4-5 printed(258P) 150.00

END OF THE FIRST SESSION