

AUCTION SALE

TUESDAY, JULY 12, 2022

AT 10:00 A.M.

United States

Postmasters' Provisionals - New York, N.Y.

- 1 (★) 1845 5c black, signed ACM connected, unused with some gum, margins all around, fresh and fine stamp, cat. \$1,500.....(9X1) 750.00

Providence, R.I.

- 2 ★★ 1846 5c gray black, pos. 10, lower left corner margin single with full margins on other sides, n.h., v.f., with 1995 PFC (catalogue value for hinged) cat. \$350.....(10X1) 250.00

St. Louis, Mo.



- 3 ○ 1846 St. Louis, Missouri, 10c black on gray lilac, Type III, position 6, neat pen strokes cancel, full margins at top and left, close at bottom and just touching at right, small thins, tear and a tiny ink erosion, otherwise a fine and presentable example of this popular rarity, with 2008 PFC, cat. \$12,500(11X5) 3,000.00

1847 Issue



- 4 (★) 1847 5c red brown, unused without gum, full margins all around, fine, with 1989 PFC, cat. \$2,100..(1) 1,000.00
5 ○ 1847 5c dark brown, red grid cancel, full margins all around, v.f., with 1982 PFC, cat. \$450.....(1a) 250.00



- 6 (★) 1847 10c black, unused without gum, clear to large margins all around, fresh color, fine example of this rare stamp unused, without any faults, with 2011 PFC, cat. \$15,000.....(2) 7,500.00



1



2



5



8



12



11



13



14



15



16



17



18



19



20



21



22



24



26



28



30



31



34



36



37



39



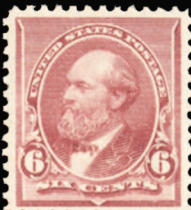
40



41



43



44



45



46



48



- 7 ★ 1847 10c black, vertical pair, unused with original gum, h.r., large margins at top and left, full at bottom and just clear at right, folded between stamps, top stamp with small hinge thin, bottom stamp with corner crease, otherwise a fine multiple, with 2016 PSE certificate. A rarity, only a handful of pairs with original gum exist, cat. \$90,000(2) 15,000.00

1875 Reproductions of the 1847 Issue

- 8 (★) 1875 5c red brown, unused without gum as issued, full margins all around, with 2012 PSE certificate graded "XF 90" (SMQ \$1,400)(3) 750.00

1851-57 Issue



- 9 ★ 1851 10c green, type II, unused with original gum (small h.r.), full to large margins all around, nice color, v.f., with 2021 PSE certificate, scarce unused, cat. \$5,000(14) 2,500.00

1857-61 Issue



- 10 ○ 1857 1c blue, type Ia, position 92L4, part black cds, usual centering, showing complete type characteristics at top, deep rich color, fresh and fine example of this rare stamp, with 1990 PSE and 2005 PFCs, cat. \$10,000.....(19) 3,500.00
- 11 ○ 1857 5c brick red, vertical strip of three, tied by 1859 New Orleans cds to small piece, with faint red arrival, usual centering, fine and scarce multiple, with 2003 PFC, cat. \$6,000(27) 2,000.00
- 12 ○ 1859 10c green, 12c black, 24c gray lilac, 30c orange, four different used, mostly fine or better, cat. \$1,180(35-38) 400.00

1875 Reprints of the 1857-61 Issue

13	P	1875 3c scarlet, plate proof on india, horizontal pair, each stamp with an inking flaw at top of the vignette, v.f., with 2004 PFC(41P3)	150.00
----	---	--	--------

1861-68 Issues

14	★	1861 3c pink, h.r., usual centering and irregular perforations, tiny corner crease, otherwise fine example of this rare shade, with 1972 and 2003 PFCs, the former without mention of the crease, cat. \$14,000(64)	2,000.00
15	○	1861 5c olive yellow, light black cancel, nicely centered, small faults, fine appearance of this rare shade, with 2021 PSAG certificate, cat. \$4,750(67b)	750.00
16	○	1861 10c dark green, Philadelphia town cancels, well centered with wide margins, with 2022 PFC graded "XF 90" (SMQ \$375)(68a)	200.00
17	○	1861 24c violet, blue cancel, usual centering, small tears and thin, fine appearance, with 2022 PFC, cat. \$2,275(70c)	300.00

1867 Grill Issue

18	○	1867 24c gray lilac, F.Grill, circle of wedges cancel, usual centering, a fine sound copy, with 2022 PSE certificate, cat. \$1,500(99)	250.00
19	(★)	1867 30c orange, F.Grill, unused without gum, fresh color, a fine sound copy, with 2022 PFC, cat. \$3,300(100)	500.00

1869 Pictorials

20	★	1869 2c brown, l.h., natural straight edge at right, well centered, fine, with 2021 PFC, cat. \$500(113)	300.00
21	★★	1869 3c ultramarine, n.h., nicely centered, fresh color, v.f., with 2004 PFC for a block of four from which this originated (catalogued as hinged) cat. \$225(114)	150.00
22	○	1869 3c ultramarine, fancy blue Crossed Circle cancel, well centered, v.f., with 2004 PFC(114)	100.00



23	★	1869 12c green, unused part original gum, large margins all around, fresh and v.f. stamp, cat. \$1,850(117)	1,000.00
24	(★)	1869 12c green, unused without gum, well centered, light horizontal crease at top, otherwise v.f., with 2018 PSE certificate, cat. \$725(117)	300.00



25	(★)	1869 15c brown and blue, type I, unused without gum, well centered, v.f., with 2002 PFC (catalogued as unused without gum) cat. \$3,250(118)	1,500.00
26	○	1869 15c brown and blue, type II, lightly canceled, well centered with wide margins, fresh color, with 1998 PFC and 2009 PSE certificate, the latter graded "XF 90" (SMQ \$725)(119)	350.00



- 27 ○ 1869 15c brown & blue, Type II, center inverted, lightly canceled, tiny thin at bottom right, small horizontal crease at bottom left, with two PFCs no longer accompanying, ex 2010 Siegel Rarities of the World, Sale 989 (\$10,500 hammer) (PFC No. 125146 - "small horizontal crease top left and thin bottom right"; PFC No.488607 - "tiny corner thin bottom right, small horizontal crease top left") (Siegel Census records three unused and 102 used copies, of which approximately only 15 are sound, including copies with tiny corner creases. A large number of others, more than half, have serious faults or repairs. The appearance of 15c 1869 Invert is usually unsatisfactory, due to cancelations that obscure the vignette). This stamp is visually quite presentable, with only minor faults, a fine appearing 15c Pictorial Invert, cat. \$37,500.....(119b) 7,500.00
- 28 ○ 1869 24c green and violet, used, well centered with wide margins, v.f., with 1985 PFC, cat. \$650 (120) 350.00



- 29 ○ 1869 24c green & violet, center inverted, perforations shifted with part of bottom "24" at top, faint cancel with inverted vignette fully visible, lightly creased, tiny closed tear at bottom, PFC No. 33744 no longer accompanies (last sold in 1972 Harmer Rooke sale. Siegel Census 120b-CAN-52, census records 83 used singles, one used pair, one on cover and the unique block of four, for a total of 94 copies of the 24c Invert. Of these, at least 65 are more or less faulty) cat. \$37,500.....(120b) 7,500.00
- 30 ○ 1869 30c ultramarine and carmine, used, well centered amid wide margins all around, v.f., with 2001 PFC, cat. \$375(121) 200.00
- 31 ○ 1869 90c carmine and black, cork cancel, large margins all around, nice colors, fine and sound stamp, with 2003 PSE certificate, cat. \$2,000.....(122) 750.00

1875 Re-Issue of the 1869 Pictorials



32



33

- 32 (★) 1875 30c ultramarine and carmine, unused without gum, well centered, incredibly bright colors, with 1978, 2006 and 2022 PFCs, the latter two graded "VF-XF 85" (SMQ \$1,500)(131) 1,500.00
- 33 ○ 1875 90c carmine and black, black cancel, well centered, fresh color, v.f. and rare used Re-Issue, only 1,356 issued. SMQ estimates that approximately 40 used copies exist. Most are either off-center or have small faults. This sound stamp, with wide margins, choice centering and a light cancel, is a true condition rarity, with 1981 PFC, cat. \$6,000(132) 3,500.00

1870-71 Issue

- 34 ○ 1870 3c black, three copies, each with a "fancy cancel", including "Odd Horse", "Messenger Running" and "Man wearing nightcap", minor flaws, each with a 2004 PFC declining opinion "as to what the cancellation represents"(147,158) 150.00



- 35 (★) 1870 90c carmine, unused without gum, well centered with wide margins, beautiful color, v.f., with 1999 PFC (catalogued as unused without gum) cat. \$1,800.....(155) 1,500.00

1873 Continental Bank Note Company

- 36 ★★ 1873 3c green, n.h., fresh color, wide margins, fine, with a photocopy of a 2022 PFC for a strip of five from which this originated (catalogue value for hinged) cat. \$110(158) 150.00
- 37 ★ 1873 90c rose carmine, well centered, beautiful color, h.r., fine, with 2001 PFC, cat. \$2,100.....(166) 1,000.00

1875 Special Printing

- 38 (★) 1875 1c ultramarine, unused without gum as issued, beautiful color, wide margins, usual scissors separated perforations at sides, v.f. example of this rare stamp of which only 44 (!) certified examples have been reported, with 1967 and 2003 PFCs, cat. \$14,000(167) 10,000.00

1879 American Bank Note Company

- 39 ★★ 1879 1c blue, n.h., well centered, v.f., with 2008 PFC, cat. \$675.....(182) 400.00
- 40 ★★ 1879 15c red orange, n.h., well centered and post office fresh, v.f., with 2002 PFC, cat. \$600..(189) 300.00
- 41 ★ 1879 30c full black, small h.r., well centered, fresh color, with 2022 PFC graded "VF-XF 85" (SMQ \$1,350)(190) 800.00

1881-1888 Banknote Issues

- 42 ★★ 1888 30c orange brown, top margin part imprint single, n.h., well centered, with 2021 PFC graded "VF-XF 85" (SMQ \$1,500)(217) 1,000.00

1890-93 Issue

- 43 ★★ 1890 2c lake, n.h., well centered, fresh color, v.f., with a photocopy of a 2021 PSAG certificate for a block of six from which this originated, cat. \$475.....(219D) 350.00
- 44 ★★ 1890 6c brown red, n.h., well centered, fresh and v.f., with a 2018 PFC for a block of eight from which this originated, cat. \$160(224) 200.00

1893 Columbian Exposition

- 45 ★★ 1893 3c green, n.h., well centered with wide margins, fresh and v.f., with a 2020 PSAG certificate for a strip of three from which this originated, cat. \$97(232) 150.00
- 46 ★田 1893 3c green, bottom margin Plate no. and imprint block of twelve, hinged in the selvage (stamps n.h.), some marginal toning, otherwise fine, cat. \$1,565(232) 350.00
- 47 ★★田 1893 3c green, top margin Plate no. and imprint block of twelve, n.h., fresh and fine, cat. \$2,390(232) 500.00
- 48 ★★ 1893 4c ultramarine, n.h., well centered with wide margins, fresh color, with 2015 PFC graded "XF 90 XQ" (SMQ \$350 for regular "90")(233) 300.00



- 49 ★ 1893 4c blue, **error of color**, disturbed original gum, unpunched perf. at bottom, nice color, fresh and fine example of this popular rarity, signed Georg Buhler (described as "black ink backstamp at the lower right" on the accompanying certificate), with 2008 PSE certificate, cat. \$17,500(233a) 4,000.00



- 50 ★★ 1893 5c chocolate, n.h., well centered with jumbo margins, fresh color, with 2021 PFC graded "XF 90J" (SMQ \$650)(234) 500.00
- 51 ★田 1893 6c purple, top margin Plate no. block of six, hinged with somewhat disturbed gum, well centered, v.f., cat. \$1,250(235) 250.00



- 52 ★★ 1893 8c magenta, left sheet margin single, n.h., well centered with wide margins, fresh color, with 1987 and 2021 PFCs, the latter graded "XF-S 95" (SMQ \$1,500)(236) 1,000.00
- 53 ★田 1893 8c brown purple, bottom margin Plate No.132 block of eight, two stamps at left h.r., minor perf. separations, fine-v.f., cat. \$1,625(236) 500.00



47



51



53



54



58



59



55



57



60



62



63



67



66



65



68



77



69



70



71

- 54 ★★田 1893 8c brown purple, bottom margin Plate no. 133 block of eight, n.h., some minor perf. separations, natural paper toning at bottom margin, fine-v.f., cat. \$2,700(236) 1,000.00
- 55 ★★ 1893 10c black brown, n.h., well centered, fresh and v.f., with 1992 PFC for a block of four from which this originated, cat. \$265(237) 200.00



- 56 ★田 1893 10c black brown, bottom Plate no. block of eight, l.h. in the ungummed portion of the selvage, stamps n.h., minor perf. separations, cat. \$4,500(237) 1,000.00
- 57 ★ 1893 15c dark green, small h.r., well centered with jumbo margins, with 2022 PFC graded "VF-XF 85J" (SMQ unpriced; \$400 for "90" and \$275 for "85")(238) 250.00
- 58 ★★田 1893 15c dark green, two blocks of four, slightly different shades, one with part imprint at left, n.h., fresh colors, few natural inclusions, fine (catalogued as singles) cat. \$4,800(238) 750.00
- 59 ★田 1893 30c orange brown, block of four, h.r., light gum soak at upper right, fine-v.f., cat. \$1,075.(239) 250.00
- 60 ★ 1893 \$2 brown red, l.h., nicely centered, fresh color, v.f., with 1997 PFC, cat. \$1,100(242) 400.00



- 61 ★★ 1893 \$2 brown red, right margin single, n.h., fresh color, fine, with 2017 PFC for a pair from which this originated, cat. \$3,500(242) 1,000.00
- 62 (★) 1893 \$2 brown red, unused without gum, fresh color, fine, with 2022 PFC (catalogued as unused without gum) cat. \$550(242) 400.00
- 63 ★ 1893 \$4 crimson red, l.h., rich and distinctive color, nicely centered, fine, with 1998 PFC, cat. \$2,100(244) 850.00



- 64 ★ 1893 \$5 black, l.h., well centered, vivid color, nearly v.f., with 1996 PFC, cat. \$2,400(245) 1,200.00

1894-97 Bureau Issues

- 65 ★★ 1894 2c carmine lake, top margin part imprint single, well centered with jumbo margins, fresh color, with 2022 PFC graded "VF-XF 85J" (SMQ \$875)(249) 700.00
- 66 ★田 1894 8c violet brown, bottom margin plate number block of six, some hinge reinforcing, scarce Plate Block, cat. \$2,500(257) 400.00



72



73



80



74



78



79



81



82



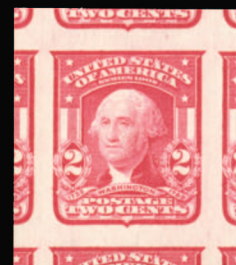
83



84



85



87



88



89



91



95



90



92



93



94



96



67	○	1894 \$5 dark green, used, creases and small thins, fine appearance, with 2021 PFC, cat. \$2,600	
	(263)	700.00

1898 Trans-Mississippi Exposition

68	★★田	1898 1c green, block of four and Bottom Margin Plate no. block of six, n.h., some marginal toning, also 2c copper red, top margin plate no. pair, n.h., fine-v.f. lot, cat. \$1,245 (web photo).....(285,286)	250.00
69	★★田	1898 4c orange, lower left sheet corner margin block of four, n.h., slightly oxidized, fine (catalogued as singles) cat. \$1,320.....(288)	250.00
70	★★田	1898 4c orange, bottom margin Plate no. block of six, n.h., beautiful color, fresh and fine, cat. \$3,250.....(288)	750.00
71	★★田	1898 4c orange, bottom margin Plate no. block of six, n.h., slightly dried gum, faintly oxidized, fine-v.f., cat. \$3,250(288)	500.00
72	★★田	1898 8c violet brown, block of four, n.h., fresh color, fine (catalogued as singles) cat. \$1,720 ..(289)	350.00
73	★★田	1898 10c gray violet, left margin block of four, n.h., fresh and fine (catalogued as singles) cat. \$1,700.....(290)	350.00
74	★	1898 \$1 black, h.r., deep color and well centered, fine, cat. \$1,500(292)	600.00



75



76

75	★	1898 \$1 black, l.h., well centered with wide margins, fresh and v.f., with 1995 PFC, cat. \$1,500	
	(292)	1,000.00
76	★	1898 \$2 orange brown, slightly disturbed original gum, well centered, fresh color, v.f., with 1983 PFC stating "unused, og", cat. \$1,900.....(293)	750.00

1901 Pan-American Exposition

77	★★	1901 1c-10c set of six, n.h., well centered, fine-v.f., signed Brun, cat. \$957.....(294-99)	300.00
78	★★	1901 4c deep red brown and black, n.h., well centered, vignette shifted to upper right, intense colors, with 2006 PSE certificate graded "XF 90" (SMQ \$350)(296)	250.00
79	★★	1901 4c deep red brown and black, n.h., well centered with wide margins, with 2022 PFC graded "XF 90" (SMQ \$350)(296)	300.00
80	★★田	1901 4c deep red brown and black, upper left corner margin block of ten with siderographers initials, hinged in top margin only, stamps n.h., fine, cat. \$1,800.....(296)	600.00
81	★★	1901 8c brown violet and black, n.h., well centered, fresh color, with 2006 PSE certificate graded "XF 90" (SMQ \$500)(298)	250.00

1902-08 Issue

82	★	1902 15c olive green, small h.r., well centered with wide margins, deep color, with 2012 PSE certificate graded "XF-Sup 95" (SMQ \$500)(309)	250.00
83	★★	1902 50c orange, n.h., well centered, fresh color, v.f., with 2001 PSE certificate, cat. \$1,225 ...(310)	500.00
84	★	1902 \$1 black, l.h., well centered with wide margins, with 2011 PFC graded "XF 90" (SMQ \$775)	
	(311)	350.00
85	★	1902 \$2 dark blue, l.h., well centered, fresh and v.f., with 2002 PFC, cat. \$825(312)	400.00



- 86 ★ 1902 \$5 dark green, small h.r., well centered, fresh color, with 2011 PSE certificate graded "VF-XF 85" (SMQ \$2,500)(313) 1,200.00

1902-08 Coil Stamps

- 87 ★★ 1906 2c carmine, n.h., jumbo margins with parts of adjoining stamps on all sides, with 2019 PSE certificate graded "Gem 100J" (SMQ \$400 for "100")(320) 400.00

1904 Louisiana-Purchase Exposition

- 88 ★田 1904 1c green, top margin Plate no. block of four, l.h. in margin (stamps n.h.), also 3c violet, bottom margin plate no. block of four, hinged at top, well centered, fine-v.f., cat. \$765(323,325) 200.00
- 89 ★★ 1904 1c green, n.h., well centered with wide margins, with 2006 PSE certificate graded "XF 90" (SMQ \$175)(323) 100.00
- 90 ★★ 1904 3c violet, n.h., well centered with wide margins, with 2004 PSE certificate graded "XF 90" (SMQ \$475)(325) 200.00
- 91 ★★田 1904 3c violet, bottom margin Plate no. block of eight, n.h., well centered, some usual marginal gum loss, fresh and nearly fine, cat. \$2,090(325) 500.00
- 92 ★★ 1904 5c dark blue, n.h., well centered with wide margins, with 2004 PSE certificate graded "XF 90" (SMQ \$525)(326) 300.00
- 93 ★★ 1904 5c dark blue, n.h., nicely centered, fresh color, with 2021 PFC graded "VF-XF 85" (SMQ \$325)(326) 250.00
- 94 ★★ 1904 5c dark blue, n.h., well centered, fresh and v.f., with a photocopy of a 2021 PFC for a block of four from which this originated, cat. \$180.....(326) 200.00
- 95 ★★田 1904 5c dark blue, bottom margin Plate no. block of four, n.h., well centered, v.f., cat. \$1,150 .(326) 500.00

1908-09 Issues

- 96 ★★ 1909 2c dark carmine, vertical coil pair, fresh color, n.h., well centered, with 2021 PFC graded "VF 80" (SMQ \$600)(349) 500.00

1909 Bluish Paper



97

98

- 97 ★ 1909 10c yellow, l.h., deep color, fine, with a photocopy of a 2021 PSE certificate for a block of four from which this originated, cat. \$1,600.....(364) 1,000.00
- 98 ○ 1909 13c blue green, neat cancelation, well centered, bright color, v.f., scarce used, with 2000 PFC, cat. \$4,000(365) 2,500.00

1909-13 Issues

99	★田	1910 5c blue, right margin plate number, imprint and star block of six, h.r., fresh color, v.f., cat. \$350.....(378)	150.00
100	★	1910 1c green, horizontal guide line pair, l.h., nibbed perfs at sides, with 2016 PFC, cat. \$1,250.....(387)	300.00
101	★	1910 2c carmine, horizontal guide line pair, h.r., well centered, beautiful color, left stamp thin, v.f. appearance, with 2022 PFC, cat. \$300(393)	100.00

1913-15 Panama-Pacific Exposition

102	★/★★田	1913 1c green, 2c carmine and 5c blue, two sets of blocks of four, also an additional 2c block, each block with two stamps hinged and two n.h., few pencil notations on gum (hinged stamps), fine-v.f., cat. \$1,426 (web photo)(397-399)	350.00
103	★★田	1913 1c green, 2c carmine and 5c blue, blocks of four, n.h., intense colors, fine-v.f., cat. \$920(397-99)	300.00
104	★★田	1913 1c green, right margin Plate no. block of six, n.h., well centered, fresh and v.f., cat. \$450(397)	200.00
105	★★田	1913 2c carmine, right margin plate no. block of six, n.h., well centered, some marginal separations and staple holes as often, fine-v.f., cat. \$625(398)	200.00
106	★★	1913 10c orange yellow, n.h., well centered with wide margins, fresh color, v.f., with a photocopy of a 2021 PFC for a block of five from which this originated, cat. \$260(400)	250.00
107	★★	1913 10c orange yellow, left sheet margin single, n.h., fresh color, v.f., with a photocopy of a 2021 PFC for a block of five from which this originated, cat. \$260(400)	150.00
108	★	1915 Perf. 10, 5c blue, l.h., well centered, with 2019 PFC graded "VF-XF 85" (SMQ \$175)(403)	150.00
109	★	1915 10c orange, l.h., well centered, beautiful color, v.f., with 2002 PFC, cat. \$675.....(404)	350.00

1914-17 Issues

110	★	1914 \$1 violet brown, small h.r., nice centering, with 2021 PFC graded "VF-XF 85" (SMQ \$500)(423)	400.00
-----	---	---	--------



111	★★	1914 3c violet, n.h., well centered with jumbo margins, fresh color, with 1983 and 2022 PFCs, the latter graded "VF-XF 85J" (SMQ \$850)(445)	700.00
-----	----	--	--------



112	★	1914 2c red, type I, vertical coil pair, showing part of adjoining stamp at bottom, l.h., well centered, fresh color, v.f. and scarce coil pair, with 2006 PSE certificate, cat. \$6,000(449)	4,000.00
-----	---	---	----------



99



103



104



100



101



106



108



105



107



109



110



119



113



115



121



116



117



120



122



123



124



125

- 113 ★★ 1914 2c carmine, n.h., full margins all around, with 2013 PSE graded "VF-XF 85" (SMQ \$275) (459) 250.00



- 114 ★★ 1914 2c carmine, type I, horizontal guide line pair, without the usual crease, n.h., full margins all around, fresh color, with 2020 PFC graded "XF 90" (SMQ \$1,750)(459) 1,500.00
- 115 ★★ 1915 2c pale carmine red, type I, n.h., fresh color, fine, with 2022 PFC, cat. \$330(461) 100.00
- 116 ★★ 1915 2c pale carmine red, top margin single, n.h., wide margins, fine, with a photocopy of a 2009 PFC for a block of 20 from which this originated, cat. \$330(461) 150.00
- 117 ★田 1915 2c pale carmine red, Top margin Plate number block of six, bottom middle stamp hinged, balance n.h., fresh color, fine-v.f., scarce Plate Block, with 2019 PSE certificate, cat. \$1,500 ... (461) 900.00

1917-29 Issues



- 118 ★/★★田 1917 1c green, corner margin plate number block of 28, imperf. vertically between the fourth and fifth column resulting in four horizontal pairs imperf. between, three of the pairs n.h., one pair and most of the sheet with disturbed original gum, fine and scarce multiple, especially rare with plate number, with 2019 PSE certificate (catalogue value for four pairs) cat. \$4,650(498b) 2,000.00
- 119 ★★ 1917 7c black, n.h., well centered with wide margins, fresh color, with 2004 PSE certificate graded "XF-Sup 95" (SMQ \$375)(507) 200.00
- 120 ★★ 1917 8c olive bister, right margin plate number single, n.h., well centered with wide margins, delicate color, with 2004 PSE certificate graded "XF-Sup 95" (SMQ \$175)(508) 100.00
- 121 ★★ 1917 9c salmon red, n.h., well centered with wide margins, beautiful color, with 2005 PSE certificate graded "XF-Sup 95" (SMQ \$185)(509) 100.00
- 122 ★★ 1917 10c orange yellow, n.h., well centered with wide margins, bright color, with 2003 PSE certificate graded "XF-Sup 95" (SMQ \$375)(510) 200.00
- 123 ★★ 1917 20c light ultramarine, n.h., well centered with wide margins, bright color, with 2005 PSE certificate graded "XF-Sup 95" (SMQ \$500)(515) 250.00



126



127



129



130



133



134



135



138



136



137



146



1150



155



141



144



151



154



156



157



158

124	★★	1917 30c orange red, n.h., well centered with wide margins, fresh and bright color, with 2006 PSE certificate graded "XF-Sup 95" (SMQ \$475)(516)	250.00
125	★★	1917 50c red violet, n.h., well centered with wide margins, bright color, with 2005 PSE certificate graded "XF-Sup 95" (SMQ \$500)(517)	250.00
126	★★	1917 \$1 violet brown, n.h., well centered with wide margins, fresh color, with 2005 PSE certificate graded "XF-Sup 95" (SMQ \$525)(518)	250.00
127	★★	1918 \$2 orange red and black, n.h., well centered, with 2004 PFC and 2006 PSE certificates, the latter graded "VF 80" (SMQ \$1,000)(523)	500.00
128	★★	1918 \$5 deep green and black, n.h., well centered, fresh color, with 2006 PSE certificate graded "VF-XF 85" (SMQ \$425)(524)	200.00



129	★★田	1918 \$5 deep green and black, top margin double Plate Number block of eight, n.h., fresh color, fine-v.f., with 2017 PSE certificate, cat. \$5,000(524)	3,000.00
130	★★	1918 2c carmine, type VI, n.h., large margins all around, with 2021 PFC graded "XF-S 95" (SMQ \$130)(534A)	150.00
131	★★田	1919 1c gray green, perf. 12½, sheet of 100, n.h., centered to left, minute natural scuff marks affecting one stamp at left, fresh and mostly fine, scarce sheet (web photo)(536)	1,500.00



132	★★	1919 3c deep red violet, n.h., well centered for this notoriously difficult stamp, with the design clear of the perforations on all sides, beautiful color, a fresh and nearly v.f. example of this rare shade, with 2017 PFC (catalogue value for "fine") cat. \$2,400(537a)	1,500.00
133	★★	1920 \$2 carmine and black, well centered with wide margins, nice colors, with 2006 PFC graded "XF 90" (SMQ \$475)(547)	250.00
134	★★	1920 \$2 carmine and black, top sheet margin single, n.h., well centered with jumbo margins, with 2020 PSE certificate graded "XF 90J" (SMW \$550)(547)	500.00
135	★田	1920 \$2 carmine and black, block of four, l.h., well centered, upper right stamp with pencil notation on gum, fine-v.f., cat. \$525(547)	200.00
136	★★田	1920 Pilgrim Tercentenary, 1c-5c, set of plate no. blocks of six, n.h., nicely centered, fine-v.f., cat. \$950(548-550)	300.00

137	★★	1923 50c lilac, n.h., near perfect centering, with 2021 PSAG certificate graded "98" (SMQ \$850)(570)	500.00
138	★★田	1923 \$1 violet brown and \$2 deep blue, blocks of four, n.h., well centered, v.f., cat. \$780 .(571-572)	250.00
139	★★田	1923 perf. 10, 3c violet, sheet of 100, n.h., usual centering for this difficult issue, fine and fresh sheet (web photo).....(584)	2,000.00



140	○	1923 Rotary perf. 11, 1c green, used, natural straight edge at bottom, with design clear of the perforations on all sides, fresh color, faint crease at upper right, otherwise v.f. for this, with 2013 PSE certificate (catalogue value is for a stamp with perforations touching the frameline on one side) cat. \$10,500(594)	5,000.00
141	★/★★	1923 2c carmine, type II, horizontal joint line strip of five, attached to coil roll leader, joint line pair and an additional stamp hinged, two stamps n.h., fresh color, fine-v.f., with 2022 PFC, cat. \$1,055..(599A)	350.00
142	★/★★田	1924 Huguenot-Walloon Tercentenary, 1c-5c blocks of four with Plate Numbers, n.h., also 5c dark blue, three Plate No. blocks of six, two n.h. (one with minor separations) and one hinged, fine-v.f., cat. \$1,077 (web photo)(614-616)	250.00
143	★★田	1924 Huguenot-Walloon Tercentenary, set of three plate no. blocks of six, n.h., fine-v.f., cat. \$520 (web photo)(614-616)	150.00
144	★★田	1925 Norse-American, 2c double plate no. block of twelve and 5c double plate no. block of eight, n.h., fine-v.f., cat. \$975.....(620-621)	250.00
145	★★田	1926 White Plains souvenir sheet, n.h., well centered, v.f., cat. \$500 (web photo).....(630)	200.00
146	★★	1928 2c Molly Pitcher, n.h., perfectly centered, with 2021 PSAG certificate graded "100" (SMQ \$350)(646)	200.00

1930-79 Issues



147	★★	1938 \$5 red brown and black, n.h., v.f. example of this rare shade, with 2019 PSE certificate for a block of four from which this originated, cat. \$3,000(834a)	1,800.00
148	★★	1977 15c Fort McHenry Flag, imperforate part roll of 77 (38 pairs), n.h., v.f., cat. \$760 (web photo)(1618C)	250.00



- 149 ★★田 1977 50th Anniversary of Talking Pictures, 13c multicolored, sheet of 50, the right column of 10 missing brown and black (engr.) column 4 transition, partial missing black & brown variety, n.h., v.f., with (March 30) 2022 PSE certificate. This is the discovery sheet of this error, kept by the owner for 45 years until this year, when he finally decided to have it certified by the PSE (as yet unlisted in any catalogues)(1727var) 15,000.00

Air Post

- 150 ★★田 1918 24c carmine rose and blue, top margin double plate no. block of twelve, n.h., fresh color, fine-v.f., cat. \$2,000.....(C3) 750.00
- 151 ★/★★田 1924 6c-24c, complete set in blocks of nine, each with middle stamp hinged, balance n.h., well centered, fresh and fine-v.f. (catalogued as singles) cat. \$2,422(C4-6) 750.00



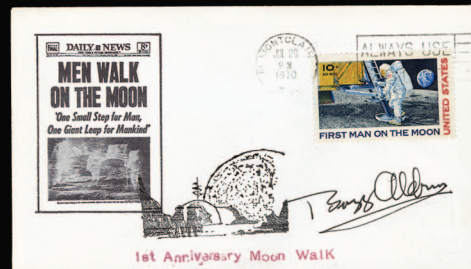
- 152 ★★田 1924 24c carmine, left margin plate no. block of six, n.h., fresh color, v.f., cat. \$2,500.....(C6) 1,200.00



159



160



161



163



165



166



167



169



170



171



172



173



174



175



177



178



180



181



182



183



184



185



186



187



188

153	★★田田	1927 10c Lindbergh, five Plate No. blocks of six, Top, Right, Bottom and Left (two), all n.h., also booklet pane of three, n.h. (faint stain), fine-v.f., cat. \$765 (web photo).....(C10,10a)	150.00
154	★★	1930 Zeppelin, 65c-\$2.60, set of three, n.h., fine-v.f., cat. \$1,675.....(C13-15)	900.00
155	★★	1930 65c green, n.h., well centered with wide margins, fresh color, v.f., with 2022 PFC, cat. \$250(C13)	300.00
156	★	1930 \$2.60 blue, l.h., well centered with wide margins, bright color, with 2022 PFC graded "XF-S 95" (SMQ \$750)(C15)	600.00
157	✉	1930 \$2.60 blue, used on cover addressed to Illinois, all appropriate margins and cachets, v.f., cat. \$575(C15)	350.00
158	★★田	1933 50c green, top margin plate no. block of six, n.h., v.f., cat. \$600.....(C18)	200.00
159	★★田	1933 50c green, top margin plate no. block of six, n.h., v.f., cat. \$600.....(C18)	200.00
160	✉	1969 (16 July) Apollo XI cover, autographed by Buzz Aldrin, v.f. (<i>Buzz Aldrin, a former astronaut, made three spacewalks as pilot of the 1966 Gemini 12 mission, and as Lunar Module Eagle pilot on the 1969 Apollo 11. He and mission commander Neil Armstrong were the first two people to land on the Moon</i>)(C18)	250.00
161	✉	1970 (20 July) Moon Landing Anniversary cover autographed by Buzz Aldrin, v.f. (<i>Buzz Aldrin, a former astronaut, made three spacewalks as pilot of the 1966 Gemini 12 mission, and as Lunar Module Eagle pilot on the 1969 Apollo 11. He and mission commander Neil Armstrong were the first two people to land on the Moon</i>)(C18)	250.00
162	✉	Zeppelin Flights . 1928-36 First Flight via Graf Zeppelin from the United States to Germany, three covers, different franking, also two "Hindenburg" cacheted covers to Germany, plus 1933 "Airship Dock Akron, Ohio" and 1948 commemorative covers, mostly fine (web photo).....(C13-15)	150.00
163	✉	1930 65c green, used May 31, 1930 on picture postcard from Lakehurst to Germany, also \$1.30 on May 31 Washington DC cover, plus \$2.60 used April 29, 1930 on cover from New York Varick Station to Philadelphia, making round-trip voyage, each with red South America cachet and Round Flight in violet, fine-v.f.(C13-15)	500.00
164	✉	1933 50c green, single and two blocks of four, used on three covers, first Miami Oct.23 dispatch, the others Oct.4 New York to Friedrichshafen, with appropriate cachets and arrival pmks, fine-v.f. (web photo)(C18)	150.00

Special Delivery

165	★★	1888 10c blue, n.h., well centered, v.f., with 1979 PFC, cat. \$1,150(E2)	300.00
166	★★	1911 10c ultramarine, n.h., nicely centered, with 2021 PFC graded "VF-XF 85" (SMQ \$305)(E8)	250.00
167	★★	1914 10c blue, bottom plate number single, n.h., fine, with a photocopy of a 2021 PFC for a block of four from which this originated, cat. \$575(E9a)	200.00



168	★★	1917 10c gray violet, n.h., perfectly centered with even margins, fresh color, natural gum wrinkle, with 2016 PSAG certificate graded "100" (not mentioning the wrinkle) and 2020 PSE certificate graded "XF-Sup 95" with the caveat "Apparent Centering: Gem 100" (SMQ \$575 for "95")(E11b)	500.00
169	★/★★	1917 10c gray violet, 10c blue, also two with "pink backs", first one n.h., others l.h. or h.r., v.f.(E11b,11c)	150.00
170	★★	1925 15c deep orange, n.h., well centered, fresh color, with 2021 PSAG certificate graded "95" (SMQ \$175)(E13)	100.00

Postage Dues

171	★★	1894 2c deep claret, n.h., well centered, v.f., with a photocopy of a 2019 PFC for block of four from which this originated, cat. \$240(J32)	150.00
172	★★	1914 1c carmine lake, top margin single, n.h., well centered, fresh color, v.f., with a photocopy of a 2022 PFC for block of six from which this originated, cat. \$220(J52)	150.00
173	★	1916 2c rose, l.h., v.f., cat. \$250.....(J60)	150.00
174	★★	1917 50c carmine rose, n.h., fresh and fine, with a photocopy of a 2021 PFC for a strip of three from which this originated, cat. \$325(J67)	150.00

U.S - American Expeditionary Force in North Russia

175	✉	1918 (4 Dec) picture postcard to Newark, N.J., with three-line "On Active Service With A.E.F. in Russia No Stamps Available" handstamp, supported by "Army Post Office P.B.1" postmark and "X11" censor strike, minor corner crease, fine and rare(J67)	200.00
176	✉	1918 selection of seven covers or cards, written-up on pages, various unit and censor markings, YMCA enclosure, mostly fine or better (web photo).....	500.00
177	✉	1919 (15 Apr) Allied YMCA North Russian Expeditionary Forces corner cachet cover to Detroit, from a private James Clark at Archangel, Russia, two strikes of British Army P.B. 2 Post Office cds, censor's handstamp and signature at bottom left, some cover wear, otherwise fine(J67)	150.00

Official Stamps

178	★★	1873 Interior, 1c vermilion, n.h., well centered with wide margins, fresh color, v.f., with 2019 PFC for a block of six from which this originated, cat. \$170.....(O15)	200.00
-----	----	--	--------



179	★	1873 State, \$2 green and black, small h.r., well centered, fine with 2021 PFC, cat. \$1,800.....(O68)	1,200.00
180	★	1879 Agriculture, 3c yellow, left margin single, small h.r., fresh and fine, with 2016 PFC for a pair from which this originated, cat. \$550(O95)	200.00
181	★★	1879 Treasury, 10c brown, n.h., fresh and fine, with 2022 PFC, cat. \$650.....(O111)	400.00
182	★	1879 Treasury, 30c brown, part original gum, small thins, fine appearance, with 2020 PFC, cat. \$2,400.....(O112)	350.00

Parcel Post

183	★★	1913 5c carmine rose, n.h., well centered with wide margins, intense color, with 2008 PSE certificate graded "XF-Sup 95" for the stamp with selvage at right which has since been removed (SMQ \$600)(Q5)	300.00
184	★★	1913 15c carmine rose, n.h., well centered, fresh color, with 2008 PSE certificate graded "XF 90" (SMQ \$400)(Q7)	200.00
185	★★	1913 25c carmine rose, n.h., well centered, fresh color, with 2014 PFC graded "XF 90" (SMQ \$400)(Q9)	200.00
186	★	1913 50c carmine rose, bottom sheet margin plate no. single (selvage trimmed), barest trace of a hinge (appears n.h.), perfect centering, bright color, with 2012 PSE certificate graded "Superb 98" (SMQ \$1,200)(Q10)	600.00

187 ★★	1913 75c carmine rose, n.h., well centered, natural paper inclusion, with 2010 PSE certificate graded "XF 90" (SMQ \$425)(Q11)	200.00
188 ★★	1913 \$1 carmine rose, n.h., well centered, bright color, with 2000 PFC and 2013 PSE certificate, the latter graded "XF 90" (SMQ \$1,275)(Q12)	600.00

CONFEDERATE STATES OF AMERICA

Postmasters' Provisionals



189 ★	1861 Baton Rouge, 5c green & carmine, unused, slightly glazed original gum, large margins all around, fresh and v.f., cat. \$1,500(11X2)	750.00
-------	--	--------

General Issues

190 ☒	1861 5c olive green, top sheet margin used on cover from Winchester, Va to Rockbridge, also 1863 cover franked with 10c blue, used from Richmond to Petersburg, fine-v.f., cat. \$425.....(1,11)	250.00
191 ★★	1863 2c brown red, n.h., large margins all around including sheet margin at top and parts of adjoining stamps on other sides, with 2020 PSE certificate graded "Gem 100" (SMQ \$1,250)(8)	500.00
192 ★★	1863 10c greenish blue, n.h., jumbo margins with parts of adjoining stamps on other sides, with 2014 PSE certificate graded "Gem 100J" (SMQ \$375 for ordinary shade graded "100")(11c)	250.00
193 ★★	1863 20c green, n.h., jumbo margins with parts of adjoining stamps on other sides, with 2019 PSE certificate graded "Gem 100J" (SMQ \$750 for "100")(13)	500.00
194 ★★	1863 1c orange, n.h., large margins all around including sheet margin at right and parts of adjoining stamps on other sides, with 2015 PSE certificate graded "Gem 100" (SMQ \$1,700)(14)	650.00

UNITED STATES POSSESSIONS

CANAL ZONE

195 ★	1909 5c black & blue, overprint double, h.r., fine, cat. \$375(33a)	150.00
196 ★	1912 2c vermilion & black, center inverted, bottom sheet margin single, h.r., well centered, v.f., with 1991 PFC, cat. \$600(39e)	250.00
197 ★★	1915 1c green & black, n.h. and post office fresh, fine (catalogued as hinged) cat. \$175.....(46)	150.00
198 ★	1918-20 1c, 2c and 5c set of three, also 2c overprint reading down, l.h. or h.r., fine-v.f., cat. \$442...(52-54,53a)	150.00
199 ★★	1920 50c orange & black, n.h., minor gum wrinkle, v.f., with 1992 PSE certificate (catalogue as hinged) cat. \$250(58)	150.00
200 ☒	1924 unexploded 25c booklet with four panes of 6x1c green, n.h., usual centering, slight front cover abrasions, otherwise fine(71a)	150.00
201 ★★	1925 17c black, red "Zone Canal" variety, n.h., fine (catalogued as hinged) cat. \$275.....(91c)	150.00

HAWAII

202 (★)	1859 2c black, Plate 3-F, type VI, pos. 6, unused without gum, margins just clear, fine, ex-Campbell, cat. \$1,000(16)	300.00
203 (★)	1864 2c black, Plate 5-C, Type VII, pos. 7, showing raised "I" of "Inter", unused without gum, margins all around, tiny thin speck, otherwise v.f., ex-Campbell, cat. \$775.....(20)	250.00



190



191



192



193



195



196



194



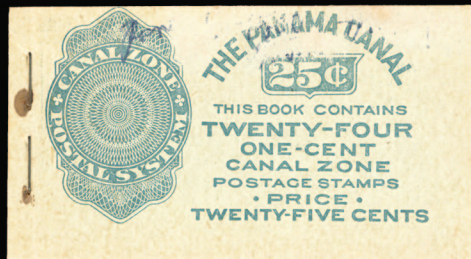
197



198



199



200



201



202



203



206



205



207



208



209



211



210



213



215



212



216



217



219



220

PHILIPPINES



- 204 ★ 1901 \$1 black, types I and II, dried gum, the latter with tiny gum soaked perforation at left, with 2007 PFC, cat. \$1,800(223,223A) 750.00
- 205 ★ 1901 \$2 dark blue, \$5 green, h.r., well centered, fine-v.f., cat. \$850(224,225) 300.00
- 206 ★ 1904 \$1 black and \$2 dark blue, h.r., fresh and fine, with 1987 PFCs, cat. \$850(237,238) 300.00
- 207 ★ 1904 \$5 green, h.r., well centered, v.f., with 2005 PFC, cat. \$800(239) 300.00
- 208 ★ **Air Post.** 1926 2p, 4p and 1p violet, three different, usual dried gum, pencil signatures, first two with 1977 SPA certificates, cat. \$1,600(C13,14,17) 500.00
- 209 ★ **Officials.** 1907 2c-30c overprinted "O B" in black and in red, ten different of each, some n.h., others with disturbed or no gum, fine-v.f. 500.00

PUERTO RICO

- 210 ★ **Postage Dues.** 1899 10c deep claret, top margin Plate No. strip of three, dried gum, as often, well centered, good color, fine-v.f., cat. \$1,250(J3) 250.00
- 211 S **Revenue Stamps.** 1901 Excise Revenue, 1c-\$50 overprints, handstamped "Specimen", some double or inverted, n.h., fine-v.f.(R1S-R9S) 250.00

WORLDWIDE STAMPS AND COVERS

ALBANIA

- 212 ★★ 1913 5pa ocher, n.h., v.f., signed Calves (catalogued as hinged) cat. \$400(4) 250.00
- 213 ★★☐ 1962 Gagarin, overprinted with yellow tint and maroon "Posta Aurore", set of three on cacheted FDC, plus n.h. blocks of four and additional 4L, n.h., fine-v.f., cat. \$490(604-606var) 150.00

AUSTRIA



- 214 ☐ 1877 (28 Nov) registered cover from Mauthausen to a doctor to His Majesty the Sultan in the Yildiz Palace in Constantinople, franked by 1867/74 5kr red and 15kr brown, tied by Mauthausen single ring cds in black. On arrival, the cover was charged by the City Post for local delivery with 1866 Liannos Post Postage Due 10 paras black on yellow label with additional manuscript 1 (piastre) notation, as the cover was not collected by the addressee (Foreign Post Offices within Turkey were not allowed to deliver mail direct). Manuscript notation at top "Recu en Decembre 1877" and reverse with Austrian Post Office Constantinople cds and Turkish Constantinople cds in blue (Dec 8). Cover with strengthening inside at top and some ageing but a remarkable and rare usage. Certificate Scheller (2010), also 2013 letter from Isfila, stating they are unable to verify the Liannos "Poste Locale" due to lack of reference. As such, we are offering this cover AS IS 1,500.00



218



221



222



223



224



226



227



228



231



237



238



240



229



230



233



236



234



239



243



242

215 ○	1910 Birthday Jubilee Issue, complete set of 17 used, each with a neat Wien cancel, fresh, fine-v.f., cat. \$914.....(128-44)	200.00
216 ★★	1916 Definitives, 3h-1kr imperforate singles, complete set of 15, n.h., v.f. (ANK 185-99U) cat. €2,000.....(145-57var)	250.00
217 ★★	1945 Styria overprints, 80pf and 1m, each with overprint reading down (inverted), n.h., v.f., the former signed Dr.Wallner, rare(423,424var)	250.00
218 ★★田	1945 Landscapes, 30gr red, top sheet margin block of four, top pair imperf. on three sides, n.h., v.f. (ANK 753Udr) cat. €700.....(467var)	250.00
219 ★	Postage Dues. 1922 Issues, imperforate singles, complete set of 29, l.h., v.f., cat. \$450.....(J103-31var)	200.00
220 ★	Military Stamps. 1917-18 Emperor Karl I, imperforate horizontal pairs, l.h. or h.r., fine-v.f., cat. \$320.....(M49-68var)	150.00

Issued under Italian Occupation-Triento & Trieste

221 ㊟	1918 registered cover franked with 60h "Venezia Giulia" overprinted adhesive, sent from Trieste to Switzerland, with Italian censor markings and seal, Milan transit and Basel arrival pmk, fine ... (N12)	150.00
-------	--	--------

Venezia Giulia

222 ㊟	1919 5c green, horizontal pair overprint inverted, used on postcard from Trieste 21.2.19 to Mentone, fine and scarce usage, signed Sismondo, with his 2009 certificate (Sass.21a, unpriced on cover)(N22a)	250.00
-------	--	--------

Trentino

223 ★/★★	1918 40c, 50c and 1L overprinted, last one n.h., others l.h., usual centering, fine, signed Sorani, with his 2003 certificate (Sass.24,26,27) cat. \$355(N57,59,60)	150.00
224 田	1919 General Issue surcharges, complete set of 11 blocks of four, canceled by Trieste cds on pieces, fine-v.f.(N64-74)	150.00

AUSTRIAN LEVANT



225 ㊟	1864 15sld yellow brown, three singles, minor perf. flaws, canceled by two clear strikes of "Constantinople 26/11" on 1864 cover to Scotland, with "F.14" and P.D. handstamps, London transit and Stranraer arrival pmk on back, minor backflap flaws, otherwise fine and clear cover from Austrian Levant, with Lombardy franking, routed via Austria, Prussia and Great Britain, with "F14" indicating credit due to Prussia and Great Britain, signed Sismondo, with his 2015 certificate ("possibly the earliest known date for "F14" marking")(N64-74)	500.00
226 ㊟	1874 (27 Nov) cover (with letter) to Cospoli, franked with 10sld blue, tied by "CAVALLA" cds, with oval merchant's cachet on back, backstamped "Lloyd Agenzie Constantinople", fine usage from Cavalla in Crete(N64-74)	150.00
227 ㊟	1884 (3 Aug) FL franked with pair of 5sld red, tied by a good strike of "RETTIMO 3/8", with oval merchant's cachet alongside, backstamped "Lloyd Agenzie Smyrne", fine usage from Rethymno in Crete(N64-74)	250.00

Lombardy Venetia

228 ★	1850 official reprints of the first issue, set of five issued in 1866, h.r., large margins and fresh, v.f., with 2004 Sismondo certificate, only 500 sets printed(N64-74)	150.00
-------	---	--------

- 229 ☒ 1850 5c orange and 10c black, both with margins all around, tied by "Ostiglia" 20/4 pmks on outer FL to Verona, with arrival pmk on back(1c,3) 250.00
- 230 ○ 1850 15c vermilion red, Type I, medium wove paper, lower left sheet corner margin single, small pre-print wrinkle, tied by "V" three-ring "pseudo-mute" cancel on outer FL to Padova, with corresponding straight-line "Venezia 24 Gen", arrival pmk on back, v.f., with 2016 Sismondo certificate (Sass. 3e)(4b) 150.00
- 231 ○ 1850 45c blue, type I, canceled by a complete strike of the mute "Cogwheel" cancelation of Milano on piece, margins all around, v.f., with Sismondo certificate (Sass.10, rarity factor x11)(6a) 150.00



- 232 ○ Sardinia, 1859 10c gray brown (bruno grigiastro), imperforate horizontal strip of three, margins all around, canceled by three clear strikes (Austrian origin) of "Lecco 19 Ago." on small piece, fine and rare, signed Bolaffi, also Sismondo, with his 2015 certificate (*The Franco-Sardinian troops entered Lecco in 1859 and introduced stamps of Sardinia, which remained in use only for a short period of time. There were no Italian cancels available during this provisional period*) (Sass. C3, €3,600 for single stamps) 1,000.00
- 233 ☒ Sardinia, 1859 10c violet brown, imperforate single, three margins, just in at left, with scissors cut at bottom, tied on small FL by "LONATO 30 LUG" datestamp (Austrian origin), addressed to Milano, with boxed "P.L. I. D." (Porto Lettere I Distribuzione) on back, also "4" rate mark, signed Sismondo, with his 2009 certificate (*The town of Lonato was liberated from Austrian rule by Piedmontese troops in 1859 and stamps of Sardinia remained in use only for a short period of time. There were no Italian cancels available during this provisional period*) (Sass. C2, €6,750) 500.00
- 234 Newspaper Stamps. 1858 1,05kr dark blue, type I, tied by Toscolano 26 Feb. datestamp on complete address piece, v.f., with Dr.Ferchenbauer certificate (ANK 16b) cat. €1,100(Sass.8) 250.00



- 235 ☒ Revenue Stamps. 1856 Fiscal stamps used as postage, 15c black & green (typographed) tied by framed two-line "Riva Vapore" departure and "Peschiera 24/2" transit pmk alongside, addressed to Desenzano, with unclear, presumably arrival cancel on back. The payment of 15 centesimi was for the internal postage rate in Lombardy-Venetia at that time. This cover was carried by steamer from Riva (the northern end of Lago di Garda) to the southern end in Desenzano. A fine example of internal waterways postal service, signed Sismondo, with his 2015 certificate, cat. €18,500 (Sass.3) 2,500.00
- 236 ☒ Fiscal stamps used as postage. 1862 15c black & green, tied by two-line "Motta 12 Lug." datestamp on FL to Padova, with arrival pmk the next day, filing folds and small spot away from the stamp, signed Sismondo, with his 2015 certificate(Sass.7) 100.00

BELGIAN CONGO

- 237 ★ 1898 10fr green & black, perf.12, l.h., v.f., signed "KL", cat. \$800(30b) 250.00
- 238 ★ 1908 5fr and 10fr handstamped, h.r., fine-v.f., the latter signed Champion, cat. \$725(39a,40c) 400.00

- 239 ★★ 1921 overprinted in black, 5fr carmine & black, overprinted (typo) Congo Belge, n.h., v.f., with handstamped guarantee marks, cat. €410.....(COB 93A) 300.00
- 240 ★ 1921 overprinted in red, 10fr black & green, overprinted (typo) Congo Belge, short perfs at top, with handstamped guarantee mark, signed Diena, cat. €730(COB 94B) 300.00



- 241 ★★ 1949 UPU, 50c-5r, complete set of twelve specially prepared mini-sheets, including four from Ruanda-Urundi, n.h., fine-v.f., cat. \$3,000(193/219var) 1,000.00

BELGIUM

- 242 P 1867 King Leopold, 10c, 20c, 30c and 40c reprints made in 1895, die proofs in issued colors, each on a thin card, fine-v.f.(18-21P) 250.00
- 243 ★ 1875 5fr deep red brown, small h.r., well centered, v.f., signed Brun, cat. \$1,700(39) 500.00
- 244 ☒ 1941 20fr unexploded booklet, with French inscriptions on reverse, n.h., v.f., cat. €250.(COB A35a) 150.00
- 245 P 1989 Europa, black minister proof sheetlets of two, group of 20, also 1990 Issue, group of 15 imperf. sheetlets, all v.f., cat. €750 (web photo)(COB 2223/2368P) 250.00
- 246 ★/★★ **Semi-Postals.** 1928 Antwerp Expo set of nine, mostly n.h., fine-v.f. (COB 266A-K, €600) 200.00
- 247 ★ 1928 Antwerp Expo overprint in violet, complete set of nine, l.h., fine-v.f. (COB 266A-K) cat. €600(B69/77var) 150.00
- 248 (★) **Postage Dues.** 1916 Waterlow & Sons redrawn, imperf. vertical pairs, unused without gum as issued, v.f. set (COB TX12-16) cat. €500.....(J12-16var) 250.00
- 249 ★ **Parcel Post.** 1922 2fr-20fr set of seven, l.h., fine-v.f., cat. \$397(Q132-38) 150.00
- 250 ☒ **Military Mail.** 1916 cover and two picture postcards to France, two bearing violet "Belgian Armored Car Division," handstamp, endorsed "Division Belges des Auto Blindées Front Sud-Orient, Russie," additional military markings both Russian and Belgian, fine-v.f. (*After the fall of Antwerp in October 1914 and the retreat to the Yser, the front line stabilized and since a breakthrough was not forthcoming, there was little use for a highly mobile armored car force. The Russian military attaché to the Belgian armed forces suggested that the armored car force could be of use on the Eastern Front. Following protocol, Czar Nicholas made an official request to King Albert. It was decided to send a force of several hundred Belgians to Russia. Since Belgium and Russia were co-belligerents and not official allies, for legal reasons the Belgian soldiers were to be considered as volunteers in the Russian army. The Belgian force sailed from Brest on September 22nd 1915 and reached Archangel on October 13, 1915. By way of Petrograd, they were sent to Galicia where they mainly saw action against Austrian forces. The Belgian armored cars came to be known as effective machine gun destroyers. They continued fighting after the Russian Revolution until the treaty of Brest-Litovsk was signed.*) 500.00

BOLIVIA

- 251 P 1869 5c-500c, Arms with nine stars, plate proofs on india, complete set, also additional trial colors of 5c (2) and 10c, minor flaws, mostly fine-v.f.(5-14P) 500.00
- 252 ★ 1869 500c black (nine stars), centered to left, h.r., signed Champion, etc., cat. \$1,000(14) 350.00

BOSNIA & HERZEGOVINA

- 253 ☒ 1910 Birthday Jubilee Issue, complete set of 16, used 18 Aug 1910 (First Day of Issue) on two registered covers from Sarajevo to Vienna, fine-v.f., without arrival markings(46-61) 250.00



244



250



248



246



247



249



253



251



252



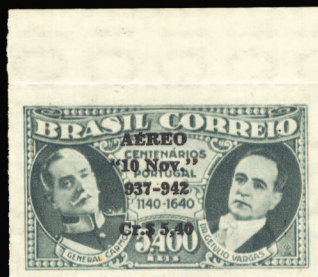
255



257



256



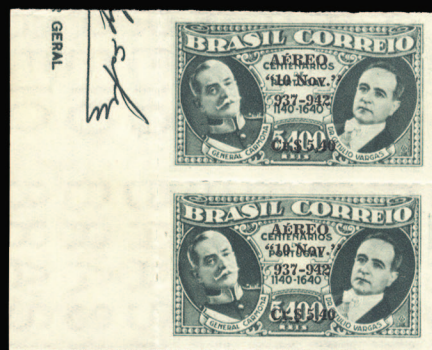
258



254



259



260



261



262



263

254	P	1912 50h, 60h and 1kr large die proofs, fresh and v.f., ANK cat. €900(78,79,81P)	750.00
255	P	1912 10kr Franz Josef, five different perforated trial color proofs, unused without gum as issued, v.f. (ANK 84P) cat. €2,000(85P)	750.00
256	★★	1916-17 issue, 3h-10kr imperforate trial color proofs, horizontal pairs in various colors, n.h., v.f. (ANK 99-116) cat. €1,500(86-104P)	500.00
257	★	1917 3h, 10h perf. 11½, also two inverted overprints, l.h. or h.r., fine-v.f., cat. \$422(105a,108b,126b,127b)	200.00

BRAZIL

258	★★	Air Post . 1942 5th Anniversary of the New Constitution, watermark 249, top margin single, n.h., v.f. (catalogue value for hinged) cat. \$225(C47a)	150.00
259	★/★★	1942 5th Anniversary of the New Constitution, watermark 249, right margin vertical pair, top stamp hinged, bottom stamp n.h., v.f. (catalogue value for hinged singles) cat. \$450(C47a)	250.00
260	★★	1942 5th Anniversary of the New Constitution, watermark 249, left margin vertical pair, n.h., v.f. (catalogue value for hinged singles) cat. \$450(C47a)	300.00
261	★★田	1942 5th Anniversary of the New Constitution, watermark 249, upper left corner margin imprint block of four, n.h., v.f. (catalogue value for hinged singles) cat. \$900(C47a)	600.00
262	★★田	1943 Visit of President Morinigo, variety printed on both sides (misperforated on back), corner margin block of four, n.h., v.f.(C48var)	150.00
263	★★田	1943 Visit of President Morinigo, imperf. top sheet margin block of four, n.h., v.f.(C48var)	150.00
264	★★田	1943 Map of South America, three different sheet margin blocks of four, including yellow omitted, red omitted and black omitted, n.h., some faults in the selvage, fine-v.f.(C49var)	200.00
265	✉	1944 1.20cr on 400r+2r, surcharged in black instead of carmine, used in combination with 60c surcharge and 5th Anniversary of New Constitution on censored cover to New York, various transits and arrivals on reverse, v.f.(C59var)	200.00

CAMBODIA

266	P田	1964 Birds, 3s,6s,12s imperforate trial color proofs sheets of 25, n.h., v.f., also 3s and 12s imperforate printer's inspection proofs in sepia, only 4-5 of each printed (web photo)(132-34P)	500.00
-----	----	--	--------

CARPATHO-UKRAINE

267	✉	1939 3k violet blue, four covers, including two different sized FDCs, used with additional franking, etc., one with minor perf. toning, otherwise fine-v.f. (web photo)(Mi.1)	200.00
-----	---	---	--------

CHILE

268	✉	1857 (25 July) cover to USA, sent via the British Office in Valparaiso, with red "Paid at Valparaiso" crowned-circle handstamp in red (SG CC1), charged 1sh (red crayon) to Panama, with "Steamship 20cts" pmk applied at New Orleans, departure pmk on back, fine, cat. \$550(A55)	250.00
-----	---	---	--------

CHINA

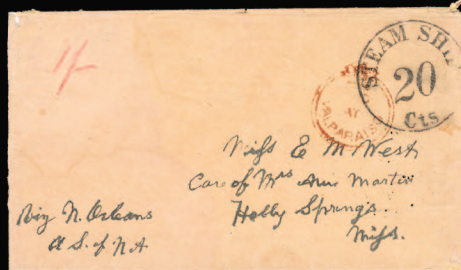
269	✉	1889 (18 Dec) cover with red "Wuhu Customs Mail Matter" in oval, franked with Japan 5sen ultramarine, canceled I.J.P.O. Shanghai, sent via Yokohama (8 Jan. 1890) to United States, endorsed "per Canadian Pacific", with additional red "Wuhu 18 Dec" departure, San Francisco and Salem arrival postmarks on back, little inconsequential toning, v.f. example of the scarce Wuhu Customs Mail Matter strike(A55)	3,000.00
-----	---	---	----------



264



265



268



275



273



270



274



278



279



280



282



283



287



281



284



285



286



292



295



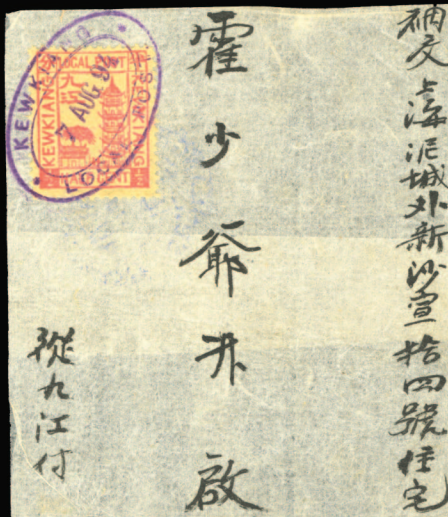
296



297



298

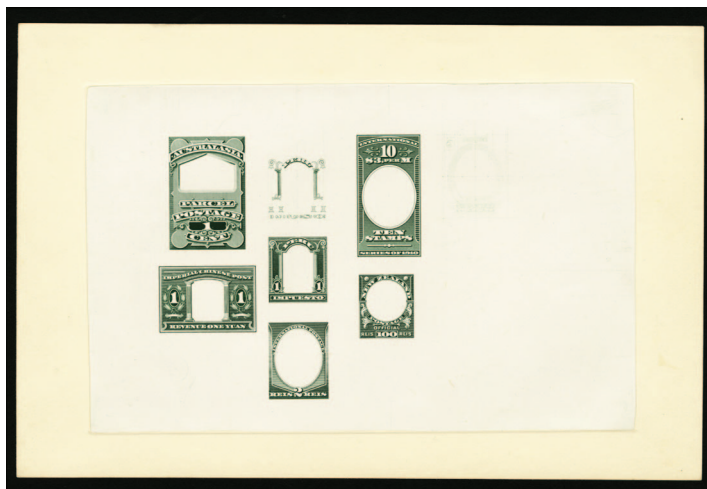


293



294

- 270  1901 (21 May) German Fieldpost card, franked with Japanese Post Offices in China 2sen green, tied by Peking I.J.P.O. departure cds, sent via Chinese Imperial Post, with 2c Coiling Dragon tied by oval Peking 21 May 1902 datestamp, addressed to Germany, with boxed East-Asia Arme Komando handstamp, fine 250.00



- 271 P 1910 "Imperial Chinese Post" (design similar to U.S. 1c Louisiana Purchase), American Bank Note Company India proof, die sunk on full card, total of seven designs in gray green, all are foreign countries or "International Postage", several designs are recognizable such as U.S. 1883 2c labeled "International Postage" with value expressed in Brazilian "Reis", and a frame with "PERU" label of an 1899 Cuban stamp and frame of a 100r Brazilian Official, but labeled "New Zealand", etc. (it has been suggested that this is the work of an apprentice engraver (signed ED Patterson) to show (and improve) his hand lettering work (initially described in George W. Brett's article in the Fall 1979 Essay Proof Journal, discussing a similar piece in great detail). A fascinating and rare item, of great interest to collectors of China and several other countries 2,500.00
- 272 P田 1910 "Imperial Chinese Post" (design similar to U.S. 1c Louisiana Purchase), American Bank Note Company India proof die sunk on card (120x120mm), total of seven designs in gray brown, all are foreign countries or "International Postage", several designs are recognizable such as U.S. 1883 2c labeled "International Postage" with value expressed in Brazilian "Reis", and a frame with "PERU" label of an 1899 Cuban stamp and frame of a 100r Brazilian Official, but labeled "New Zealand", etc. (it has been suggested that this is the work of an apprentice engraver to show (and improve) his hand lettering work). A fascinating and rare item, of great interest to collectors of China and several other countries (web photo) 2,500.00
- 273 (★) **Semi-Postals.** 1944 Refugees, horizontal gutter pairs, unused without gum, v.f., rare(B14-16) 250.00
- 274  **Flight Covers.** 1923 (May 30) Experimental Service from Peking to Tientsin, cover franked with 45c Air Post and additional adhesives, paying a total of 48c, all tied by Peking cds, with violet bilingual "Aeroplan Service - Tientsin C.P.O." arrival datestamp, fine-v.f. This service was suspended October 31, 1923(AAMC 4) 750.00
- 275 ★ **Postage Dues.** 1912 4c blue, 10c blue, each overprinted in black instead of red, probably essays, fine and rare(J28,31var) 500.00



- 276 ★(★) 1940 5c, 10c, 20c, 50c and \$2 orange, imperforate horizontal pairs, five different, unused or with dried original gum, some creases, mostly v.f., rare(J73/85var) 2,500.00



- 277 田 1940 20c and \$2 orange, imperforate blocks of four, canceled Canton, v.f.(J75,79var) 1,500.00

Yunnan Province

- 278 ★/★★ 1944 8c-\$1, black overprint, set of five, 50c l.h., others n.h., fine-v.f., cat. £698.....(SG 221-225) 300.00

Manchuria

- 279 (★) **Parcel Post.** 1948 \$500-\$20,000, set of six, unused without gum as issued, fine-v.f., and rare set, cat. £3,875(SG P78-83) 1,500.00

Sinkiang

- 280 ★ 1915 ½c-\$1, complete set, h.r., some usual light toning, otherwise fine-v.f.(1-16) 250.00
- 281 ★★田 1942 8c-\$1, red overprint, set of six, 8c in a block of four, n.h., some natural gum bends, still fresh and v.f., cat. £1,707(SG 214-219) 700.00
- 282 (★) 1949 Surcharges, set of six, without gum as issued, some minor bends, still fine-v.f.(SG 261-66) 250.00

SHANGHAI

- 283 ★ 1865-66 8ca olive green, Printing 32, unused without gum as issued, v.f., cat. \$700(14) 300.00
- 284 ★ 1865 6ca vermilion, Printing 46, unused without gum as issued, v.f., cat. \$500(17) 250.00
- 285 ★ 1865-66 3ca-16ca, Printings 50, 58, 60, and 62, unused without gum as issued, margins all around to touching in places, couple of minute flaws, also included is a forgery of the 1ca value, cat. \$1,500(20,21,24,25) 500.00
- 286 ★ 1865 12ca orange brown, Printing 61, unused without gum as issued, v.f., cat. \$325(24) 200.00
- 287 E 1893 2c, 5c and 20c, three different imperforate plate essays on unwatermarked wove paper, similar to the issued design but with "complex" spandrels(155/59E) 500.00



- 288 E **Postage Dues.** 1893 ½c-20c Numeral, imperforate horizontal pairs, complete set of seven, 10c watermarked and gummed, others unwatermarked, chalky paper, v.f.(J14-20P) 1,000.00



289



290

- 289 P 1893 Lithographed die proof for the Numeral Issue, Barclay & Fry, London, 1/2c color die essay with value in violet brown and black, essay in almost adapted design (dots under "ct" blank and rays under "postage due" are different), with guide lines at top and bottom, pinholes at top (where it was attached to an original document as a sample), creased, otherwise fine and scarce proof, ex Larson, with Holcombe certificate(J14P) 1,500.00
- 290 E 1893 2c-20c, imperforate Plate Essays on thick watermarked paper (Livingston D16EP-20EP), matching left margin horizontal pairs, each showing normal top left "screw head", se-tenant with "filled screw head" varieties, v.f. and rare set of five, ex-Larson (essays in this format are not known for 1/2c and 1c values)(J16-20E) 2,500.00

Chinkiang

- 291 ☒ 1894-95 selection of 11 different red-band covers, regular franking and Postage Dues, used locally and to Shanghai, fine-v.f. (web photo) 2,500.00
- 292 ○ [Postage Dues](#). 1895 1/2c rose, overprinted in black over red, both overprints inverted, used, small faults, fine appearance, cat. \$350(J9a) 250.00

Kewiang

- 293 ☒ 1894 (7 Aug) two wrappers, each franked with a 1/2c local, tied by violet datestamps, sent to Shanghai, with (Aug 9) arrival markings on reverse, fine and rare usage(1) 500.00

Wuhu

- 294 ☒ 1896 (11 July) red band cover to Shanghai, franked with 40c carmine, tied by Wuhu China cds, with additional strike alongside, Shanghai arrival (Jul 13) on reverse, some light staining, otherwise fine and scarce stamp on cover(54) 500.00

Japanese Occupation of China - North China

- 295 ★ 1941 overprints, complete set of 10, plus type II set of 7, l.h. or h.r., fine-v.f., cat. \$811(3N20-29,23a-29a) 250.00

Hopei

- 296 ★ 1941 \$20 overprint type II, l.h., v.f., cat. \$450(4N22) 250.00

Shantung

- 297 ★ 1941 \$1 overprint Type I, l.h., v.f., cat. \$425(6N17a) 250.00

Supeh

- 298 ★ 1941 overprints, complete set of 10, plus type II set of 8, l.h., fine-v.f., cat. \$731 (7N17-26,19a-26a) 250.00



CHINA - PRC



- 299 ★★ 1962 Mei Lan-fang souvenir sheet (full size 108x147mm), n.h., few gum skips and horizontal toned streak on gum, otherwise fresh and v.f. sheet in excellent condition, without the usual faults that plague this item, cat. \$18,500.....(628) 7,500.00

China - Soviet Republic



- 300 (★) **Postage Dues.** 1932 1c yellow, horizontal imperf. pair, unused without gum as issued, v.f., ex-Larson, with China National Postage Stamp Museum certificate (Yang SPD1a)(SG SRD8var) 2,500.00

Northeast China



- 301 ✉ 1949 native cover with a red adhesive, v.f., with arrival pmk on back (web photo) 150.00

COLOMBIA


- 302 ✉ 1863 outer FL to New York, with "Steamship 10", endorsed "Aspinall," also "Forwarded by E.I. Isaacs & Co. Barranquilla" and "Forwarded by W.C. Foster Carthagena" markings, some tears, otherwise fine 250.00





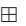

- 303 ✉ 1868 5c orange, 10c lilac and 20c blue, each with margins all around, tied by oval blue Barranquilla eye-glass cancels on outer FL to Bogotá, v.f. and attractive three color franking(53-55) 1,500.00

- 304  **Air Post.** 1920 cover franked with 10c green, used in combination with 3c government franking (uncanceled), 10c tied by special "Compania de Navigacion Aerea" cachet on first flight from Barranquilla to Medellin, some minor cover stains, still fine(C11) 500.00
- 305 P 1921 2p imperf. plate proofs in ultramarine and brown red, also additional pair of last, the former with small stain, otherwise v.f.(C33P) 250.00
- 306  **Flight Covers.** 1922-23 three flown covers, two addressed to Germany, one franked with pair of 15c orange brown, other two with 30c green franking, fine-v.f. (web photo) 150.00

CORFU - Issued under Italian Occupation

- 307  1923 complete set of eight, tied by 23.9.23 cds on cover from Corfu to Rhodes, some peripheral cover toning, otherwise fine and attractive(N1-8) 250.00

COSTA RICA

- 308 P 1921 Simon Bolivar, 15c deep violet, large die proof in issued color, die sunk on full card, v.f. (web photo)(110P) 250.00
- 309 P  **Air Post.** 1945 Hospital of St. John, complete set of imperf. trial color proofs in blocks of four, without gum, v.f.(C128-140P) 150.00
- 310    **Postal Tax Stamps.** 1959 Paintings (Father Flanagan, etc.), set of four sheet corner margin blocks of four, n.h., v.f. (web photo)(RA3-6var) 150.00




CRETE

- 311    1898-99 10pa-20pa, 12 sets of four including blocks of eight, n.h., fine-v.f., cat. \$1,086 (web photo)(2-5) 300.00

CROATIA

- 312 P 1943 Zrinki-Kristopan Conspiracy, Ruder Boskovicz, 20 imperforate trial color proofs, four different of each, v.f.(56-60P) 150.00
- 313 P **Semi-Postals.** 1944 St. Sebastian, a complete "Ministerial" album, 46 pages, with perf. & imperf. uncut sheetlets with all conceivable stages, including frame only, center only, different colors, etc. (1,350+ pieces), v.f. and extremely rare intact album; most have been broken up (Mi.154-57P) (Croatian Specialized Catalogue, €12,000+ as singles) (web photo)(B56-59P) 2,000.00



CUBA

- 314  1866 10c blue, horizontal strip of four tied by oval grids on cover to Bilbao, Spain, with 11.12.66 arrival on back, filing fold away from the stamps, v.f.(24) 100.00
- 315   1914 Map of Cuba, 1c-1p, set of eight (complete as issued) imperforate horizontal pairs, n.h., 1p with toned spot on gum, otherwise v.f. (catalogue value for hinged) cat. \$1,000(253/262var) 750.00

CZECHOSLOVAKIA

- 316 P 1965 National Spartacist Games, 1.60kr Runners, three large die proofs in various colors, v.f., signed Karasek (web photo)(1277P) 300.00



- 317   **Semi-Postals.** 1919 3k claret, type I, well centered, n.h. and post office fresh, signed Gilbert, with 2001 Karasek certificate (catalogue value for hinged) cat. \$3,750(B19a) 2,000.00

Czechoslovak Legion Post in Siberia

- 318 ☒ 1918-19 selection of eleven covers or cards and a Postal Money Order, all written-up on pages, with 1918 postcard from Kiev, others from Siberia, with a local Irkutsk postcard, with Czech Legion Field Post No.6 handstamp, others from Station Zima, Omsk, Vladivostok, variety of unit markings, censor cachets, etc., fine group (web photo) 500.00

DANISH WEST INDIES

- 319 ★ **Postage Dues.** 1905 5b red & gray, imperf. single, numeral inverted, l.h., v.f., with 2007 Rendon certificate, ex-Larson(J5var) 500.00

DENMARK

- 320 ★ 1851 2rs blue, Thiele Printing, with yellow brown burelage, watermarked "small crown", Plate I, Nr.32, Type 8, unused with original gum, h.r., margins all around, good color, v.f., with 1980 Slavomir Kaiser and 1982 Diena certificates (Facit 1B) cat. \$3,500(1) 2,000.00
- 321 (★) 1851 4rs brown, group of 28 reprints, including 1885 four different (burelage A-D), complete sheet of 10 (burelage C), 1901 Burelage A & B; also later issues, fine-v.f. (Facit SEK 12,870) (web photo) 250.00
- 322 ★ 1854-57 2s blue, 4s brown, 8s green and 16s gray lilac, imperforate singles, set of four, l.h., margins all around, fresh and v.f., signed Diena, etc., cat. \$1,225(3-6) 500.00
- 323 ○ 1870 3s gray and bright lilac, frame inverted, used, faint thin, otherwise v.f., rare stamp, ex-Cunliffe, cat. \$2,000(17b) 350.00
- 324 ☒ 1900-16 4o stationery entire envelope additionally franked with strip of 4x4o numeral, tied by Skive departure cds and sent to Slagelse, showing N.S. Nedergaard stamp dealer's advertising on back, also a 1916 mourning cover from Copenhagen to Holland, franked with 10o charity stamp and 4x5o green, Driesbergen arrival pmk on back 150.00
- 325 ★★ 1912-15 General Post Office, 5kr dark red, watermarked Crown and Multiple Crosses, n.h., the former pencil signed, fine and v.f., cat. \$3,000(82,135) 1,000.00
- 326 ★ 1912 General Post Office, 5kr dark red, l.h., well centered, fine, cat. \$500(82) 150.00
- 327 ★★ 1913-28 King Christian X, 5ore-10kr complete (less 12ore green and 40ore gray blue & black, No.101,117 issued in 1920), 33 different, all n.h. and post office fresh, fine-v.f., last one signed Diena, cat. \$3,000(97/131) 1,000.00
- 328 ★★ 1913-20 King Christian X, 1kr yellow brown, 2kr gray and 5kr purple, set of three, n.h., first one with faint, natural gum toning, still v.f., cat. \$940(132-34) 250.00

ECUADOR

- 329 ☒ 1865-72 1r green, horizontal pair, margins just touching at left and bottom right, used on 1868 FL to Lima, with arrival (May 3) on reverse, filing fold away from the stamps, fine(5) 200.00

EGYPT

- 330 ☒ 1850 (8 Oct) FL from Alexandria to Genova, with "Via di Nizza" and part of Marseille transit pmk at bottom, red "Nizza" at top and "Antibes" arrival pmk on back, fine usage 150.00
- 331 ☒ 1867 (24 July) FL posted in Cairo, endorsed "via Brindisi"; indicating routing by the Italian steamers out of Alexandria, franked with Italian 60c purple, canceled "234" in rectangle of dots, with corresponding "Poste Italiane d'Egitto Alessandria" cds alongside, appropriate sequence of transit and arrival markings, filing fold through the stamp, otherwise fine 150.00



332



333



334



337



338



339



340



341



342



343



344



345



346



347



352

- 332 ○ 1867-80s Consular Post Offices (including Saudi Arabia), selection of thirteen stamps, with usages from Dardanelles, Gedda (Jeddah), Mersina, Metelino, Salonicchi, Serapeum, Canal de Suez, etc., including 1p and 2pi used together on piece and tied by two clear strikes of "Poste Vice-Reale Egiziane Gedda", few faults noted, still fine-v.f. and interesting group 500.00
- 333 ✉ 1876 (9 Jan) outer FL from Alexandria to Livorno, franked with Italian "Estero" 40c rose, tied by "234" in rectangle of dots, corresponding "Alessandria / Poste Italiane Egitto" departure pmk alongside, addressee's name obliterated, with arrival pmk on back, some cover wear, otherwise fine 150.00
- 334 ✉ 1877 cover from Port Said to Trieste, with "Poste Egiziane Port Said" departure pmk, sent unpaid and taxed "20" in blue crayon, also handstamped "T", with Italian Alexandria, Trieste, Brindisi and Bologna transits on back, some cover wear, fine 150.00



335

336

- 335 ★ 1926 Port Fouad, set of four, h.r., few uneven perforations as often, otherwise v.f., rare, with 2015 Sismondo certificate for the 50pi, cat. \$2,500(121-124) 1,500.00
- 336 ★ 1926 Port Fouad, 50p brown violet, h.r., well centered, good color, signed Diena, etc., v.f., cat. \$1,600(124) 1,000.00
- 337 ✉ 1929 (30 Dec) registered cover from Alexandria, franked with French Issue surcharges, addressed to Costa Rica, with San Jose (Feb 5, 1930) arrival pmk, fine cover to an uncommon destination 150.00
- 338 ✉ 1933 Aviation Congress, set of five used in 1934 on locally addressed Mansura cover, fine-v.f.(172-76) 250.00
- 339 ✉ 1933 International Aviation Congress, unaddressed FDC, v.f.(172-76) 200.00
- 340 ✉ 1937 Coronation of King Farouk, cacheted FDC with nine values (complete as issued on 29 July 1937), Parliament pmks, addressed locally, cover folded, with some edge faults, stamps v.f.(206/16) 250.00
- 341 ✉ 1937 Coronation of King Farouk, FDC with nine values (complete as issued on 29 July 1937), registered from Cairo, addressee's name taped over, also another FDC with 1m-5m canceled "Cairo Station" and sent to England, plus 1938 5m Royal Wedding FDC, Qubba Palace cds, fine(206/16,223) 250.00
- 342 ✉ 1937 King Farouk, 1m-20m, nine different, complete as issued on 29 July 1937 Alexandria FDC, addressed locally, some toning, otherwise fine(206/215) 250.00
- 343 ✉ 1945 (2 June) large flown cover from Cairo to New York, franked with £1 Farouk, plus additional franking, tied by departure cds, with censor tape and bank labels on back, some faults, fine commercial usage(240) 250.00
- 344 ✉ 1953 registered cover franked with a combination of Republic Issues and overprinted with three bars (two pairs and a block of four, all with double bars), sent from Alexandria to Cairo, with arrival pmk 150.00
- 345 ✉ Zeppelin Flights. 1931 (10 April) Egypt flight card from Cairo, via Jerusalem to Beirut, franked with 50/27m, tied by Graf Zeppelin departure pmk, with red Pyramid cachet alongside, Beirut arrival (7 May) cds on back, uncommon destination 350.00

- 346 ✉ 1931 (10 April) Egypt flight picture postcard (franked on view side with 50/27m), written entirely in Hebrew, addressed to Haifa, with red Pyramid cachet, minor card flaws, otherwise fine 350.00
- 347 ✉ 1931 (9 Apr) incoming Egypt flight card from Germany, Friedrichshafen departure and Cairo (10 Apr) drop arrival pmks, red Pyramid cachet alongside, fine 350.00



- 348 ✉ 1931 (10 April) Egypt flight cover from Port Said to Jaffa, franked with upper left sheet corner margin 100/27m Graf Zeppelin, surcharge displaced to bottom, red Pyramid cache alongside, Jaffa arrival (13 Apr) on back, some filing folds, otherwise fine 750.00
- 349 ★ **Postage Dues.** 1884-88 numerals, perf. 10½, with and without watermark, six different, h.r., fine, cat. \$572 (web photo)(J1,2,5,7,9,10) 150.00

ESTONIA

- 350 ✉ 1919 (16 July) registered cover franked with vertical pair of 70k, used in combination with 70p from Narwa to Denmark, also a picture postcard franked with a combination of 15k and 5p orange, tied by a blue mute cancel addressed to Sweden (web photo) 150.00
- 351 ✉ 1919 picture postcard franked with single 15k blue, canceled "KOSE", with Erden departure pmk alongside, also another ppc franked with 5kr, canceled by two "ELWA" handstamps, used locally (web photo) 100.00

Rakwere

- 352 ✉ **Postal Stationery.** 1918 unaddressed postal card 10k on 3k "Postkaart" surcharge, cancelled Wessenberg, minor corner creases, otherwise fine 150.00

ETHIOPIA

Italian Occupation

- 353 ○ 1936 Somalia Pictorials 5c, 10c, 25c and 30c, each tied on piece by "Poste Imperial Italiane Harrar 1 Giu. 1936 Anno XIV" datestamps, fine-v.f. 150.00

FAROE ISLANDS

- 354 ✉ 1919 Denmark 5o and vertical half of 4o, tied by Torshavn cds (15.1) on locally addressed cover, also 2o on 5o green, used in combination with Denmark 5o on small cover, v.f., with 1975 Gronlund certificate for the bisect (see Denmark 88a) cat. \$1,725(1) 150.00
- 355 ✉ 1943 (18 May) registered cover attractively franked with Danish adhesives, sent from Torshavn to USA, opened by Censor and resealed, with "Denmark Free Danes" label on back, tied by Chicago arrival pmk 150.00

FEZZAN

- 356 ✉ 1951 complete set of 12, tied by 16 July, 1951 cds on registered and flown cover from Sebha to USA, v.f., with arrival pmk(2N12-23) 250.00
- 357 ★★ 1951 10c-50fr, imperforate singles, complete set, n.h., few black adhesions on reverse, otherwise v.f. (Sass.29-40, €800)(2N12-23var) 200.00
- 358 ★★ 1951 Issue complete, imperforate singles, n.h., v.f. (Sass.29-40, €800)(2N12-23var) 250.00

FINLAND

- 359 ○ 1866 8p green, horizontal strip of three, roulette III double, sheet margin at right, canceled on piece, roulette III mostly intact, couple of shorter teeth at top, fine(7var) 300.00



- 360 ○ 1866 40p lilac rose, rouletted type I at top and type III on the other sides, canceled Kuopio 6.3.72 in blue, with traces of black postmark at left, rare roulette combination, with 2002 Mikko Ossa certificate(10var) 1,500.00
- 361 ✉ 1915 Russian 20k stationery entire envelope, registered from "Katajonakka" to Java, Netherlands Indies, two Charity labels tied on back, redirected on arrival, fine cover from Finland to an uncommon destination 150.00

North Ingermanland

- 362 ★ 1920 issues complete, also imperforate Coat of Arms, four pairs and three singles, plus pictorials set of six imperf. singles, h.r., also included 1m used, variety with double perfs (web photo)(1-14, 1a-7a) 250.00

FIUME

- 363 ★★田 1919 Commemoratives, complete set of 17 blocks of four, various types of paper, n.h., fine-v.f. (catalogued as hinged singles) cat. \$1,064.....(27-43) 500.00
- 364 ★★田 1919 Commemoratives, complete set of 17 blocks of four, various types of paper, n.h., fine-v.f. (catalogued as hinged singles) cat. \$1,064.....(27-43) 500.00
- 365 ★★田 1923-24 Issues complete, blocks of four, n.h., occasional natural gum creases, fresh, fine-v.f., cat. \$2,574(172-207,E14-17) 500.00

END OF THE FIRST SESSION