

# AUCTION SALE

## TUESDAY, SEPTEMBER 15, 2020

AT 10:00 A.M.

### United States

#### Postmasters' Provisionals - New York, N.Y.

- |   |   |                                                                                                                            |        |
|---|---|----------------------------------------------------------------------------------------------------------------------------|--------|
| 1 | E | 1845 Washington, 5c blue, die essay on india showing vignette with and without the frame, v.f., cat. \$450 .....(9X1-E1)   | 400.00 |
| 2 | E | 1845 Washington, 5c orange, die essay on india showing vignette with and without the frame, v.f., cat. \$450 .....(9X1-E1) | 400.00 |

#### 1847 Issue

- |   |   |                                                                                                                                                                                                                                                  |        |
|---|---|--------------------------------------------------------------------------------------------------------------------------------------------------------------------------------------------------------------------------------------------------|--------|
| 3 | ✉ | 1847 5c red brown, margins all around, canceled by crisscross pen, with matching "Way 1" alongside, used in 1851 on FL from Mobile to New Orleans, with red Jan. 9 arrival pmk at left, filing folds through the stamp, fine appearance .....(1) | 150.00 |
| 4 | ✉ | 1847 5c red brown, ample margins all around, canceled by blue grids on brown cover used from Lexington, Ky to Mount Sterling, some overall cover toning on back, fine .....(1)                                                                   | 150.00 |



- |   |   |                                                                                                                                                                                                                                                                                                                                                         |        |
|---|---|---------------------------------------------------------------------------------------------------------------------------------------------------------------------------------------------------------------------------------------------------------------------------------------------------------------------------------------------------------|--------|
| 5 | ✉ | 1847 10c black, three margins, just in at top left, tied by round grids on FL sent December 18, 1848 from New Orleans, per Steamer via Boston and Liverpool to London, black departure postmark alongside, some red markings and arrival postmark on back, filing fold away from the stamp, fine cover to England, with 1996 PFC, cat. \$3,250 .....(2) | 750.00 |
| 6 | ✉ | 1847 10c black, margins all around, small scissors cut at upper left outer margin only, canceled by red grids on outer FL used in 1849 from Cincinnati to Philadelphia, red departure (Nov 14) postmark alongside, filing fold away from the stamp, fine .....(2)                                                                                       | 500.00 |

#### 1875 Reproductions of the 1847 Issue

- |   |   |                                                                                        |        |
|---|---|----------------------------------------------------------------------------------------|--------|
| 7 | P | 1875 5c red brown and 10c black, plate proofs on card, v.f., cat. \$500 .....(3P4-4P4) | 250.00 |
|---|---|----------------------------------------------------------------------------------------|--------|



- |   |     |                                                                                                                           |        |
|---|-----|---------------------------------------------------------------------------------------------------------------------------|--------|
| 8 | (★) | 1875 5c red brown, unused without gum as issued, full margins all around, tiny thin, fine appearance, cat. \$900 .....(3) | 500.00 |
|---|-----|---------------------------------------------------------------------------------------------------------------------------|--------|



1



2



7



11



17



19



21



3



4



18



24



25



28



29



6



33



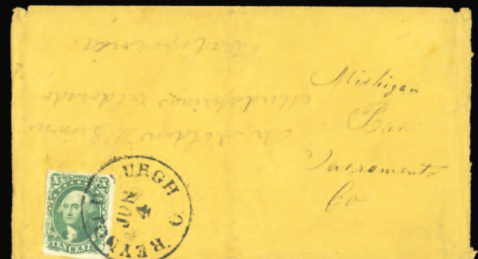
36



38



41



13



43



45



47



48



39





- 9 (★) 1875 10c black, unused without gum as issued, margins all around, v.f., with 2009 PFC, cat. \$1,100 .....(4) 850.00

### 1851-57 Issue



- 10 (★) 1851 1c blue, type II, pos. 4R1L (double transfer), unused without gum, huge margins all around including part of adjoining stamp at bottom, v.f., with 2020 PFC (catalogue value for pos. 4R1L with original gum) cat. \$2,000 .....(7) 850.00
- 11 ○ 1851 1c blue, type IIIa, lightly cancelled, full to clear margins all around, with 2020 PSAG certificate graded "80" (SMQ \$850) .....(8A) 600.00



- 12 ★ 1851 10c green, type III, small part original gum, full margins all around, nice color, with 1975 PFC and 2020 PSAG certificate graded "85" (SMQ \$7,250) .....(15) 3,500.00
- 13 ✉ 1851 10c green, type IV, full to large margins all around, tied by Reynoldsburgh, Ohio cds on cover addressed to California, some cover faults, stamp fine, cat. \$1,900 .....(16) 800.00

### 1857-61 Issue



- 14 ★ 1857 1c blue, type I, small h.r., well centered with all characteristics clearly showing, fresh color, v.f., with a 2011 PFC for a block of four from which it originated, cat. \$2,100 .....(18) 2,200.00



- 15 (★)田 1857 1c blue, se-tenant bottom margin block of eight, types I-II, second and bottom rows type I, others type II, fresh color and sharp impression, position 4 with small tear and position 7 with internal rift, otherwise fine and scarce combination block, with 2011 PFC, ex-Neinken, Wagshal (catalogue value for two se-tenant blocks of four with original gum) cat. \$17,500 .....(18,20) 2,000.00
- 16 ○ 1857 1c blue, type Ia, black Boston "Paid" cancel, defective (scissors separated perforations with part of the design cut away at bottom), a nice space filler, with 2020 Crowe certificate, cat. \$9,000 (web photo) .....(19) 750.00
- 17 ★ 1857 1c blue, type II, small h.r., well centered, v.f., with a photocopy of a 2011 PFC for a block of four from which it originated, cat. \$850 .....(20) 650.00
- 18 (★) 1857 1c blue, type II, corner margin single, unused without gum, wide margins, fresh color, v.f., with photocopy of a 2011 PFC for a strip of five from which this came, cat. \$375 .....(20) 350.00
- 19 ★ 1857 1c blue, type V, small h.r., well centered, with 2012 PSE certificate graded "VF 80" (SMQ \$150) .....(24) 150.00



- 20 ★田 1857 1c blue, type V, left margin plate number and imprint block of eight, two stamps hinged, balance n.h., well centered, fresh color, v.f. and rare plate block, with 1994 PFC and 2019 PSE certificate (each for a block of 16 from which this multiple originated) cat. \$4,500 .....(24) 6,000.00



- 21 ★ 1857 3c rose, disturbed part original gum, usual centering, fine, with 2020 PSAG certificate, cat. \$2,750.....(25) 450.00



22

23

- 22 ○ 1857 5c red brown, type I, black and red cancels, near perfect centering, rich color and sharp impression, v.f., with 2003 PFC, cat. \$1,225.....(28) 1,000.00
- 23 ○ 1857 5c brown, type I, used, well centered, with 2020 PSAG certificate graded "90" (SMQ \$1,100) . .....(29) 750.00
- 24 ★ 1857 5c brown, type II, barest trace of a hinge, usual centering, fresh and fine, with 2020 PFC, cat. \$2,200 .....(30A) 800.00
- 25 ○ 1857 10c green, type III, red cds, near perfect centering, rich color, v.f., with 1999 PFC, cat. \$215 .. .....(33) 350.00



- 26 ○ 1857 10c green, type III, pos. 64L, used, well centered for this issue, nice color, with 1983 and 2006 PFCs, cat. \$2,100 .....(34) 1,200.00



- 27 ○ 1857 10c green, type IV, lightly canceled, wide margins, fine, with 2020 PSAG certificate, cat. \$2,100.....(34) 1,500.00
- 28 (★) 1857 24c gray lilac, unused without gum, well centered, small faults, v.f. appearance, cat. \$500(37) 150.00
- 29 ★ 1857 90c blue, unused part original gum, well centered, thin, v.f. appearance, cat. \$3,000 .....(39) 750.00



- 30 ○ 1857 90c blue, large Boston "Paid" cancel, well centered for this, nice impression, reperforated at right, otherwise a fine example of this scarce used stamp, with 2016 PSE certificate, cat. \$11,750... .....(39) 1,500.00

### 1875 Reprints of the 1857-61 Issue



31



32

- 31 (★) 1875 24c blackish violet, unused without gum as issued, usual centering, beautiful impression, fine, only 479 sold, with 2020 PFC, cat. \$3,000 .....(45) 2,000.00
- 32 (★) 1875 30c yellow orange, unused without gum as issued, usual centering, fresh color, vertical crease, otherwise fine, only 480 sold, with 2020 PFC, cat. \$3,000 .....(46) 1,200.00

### 1861-68 Issues

- 33 ★ 1861 5c buff, red grid cancel, v.f., with 2020 PSAG certificate, cat. \$810.....(67) 600.00



34




35

- 34 ★ 1861 12c black, h.r., well centered, with 2019 PSE certificate graded "VF 80" (SMQ \$2,000) .....(69) 1,800.00
- 35 (★) 1861 24c pale gray violet, unused (regummed), well centered for this difficult stamp, nice impression, small faults, v.f. appearance. A seldom seen unused example of this rare shade, with 2020 PSAG certificate, cat. \$6,000.....(70d) 2,500.00
- 36 ★ 1861 2c black, l.h., well centered, sharp impression, v.f., with 2020 PSAG certificate, cat. \$325.(73) 300.00



- 37 ★/★★田 1861 2c black, bottom margin block of four, bottom right stamp n.h., others h.r., sharp impression, fine-v.f., with 2018 PFC, cat. \$2,750 .....(73) 2,000.00
- 38 ○ 1861 15c black, red cancel, nicely centered, corner crease, v.f. appearance, cat. \$225.....(77) 100.00



- 39  1865 3c rose, tied by a Circle of Wedges cancel on cover from New York City, addressed to a CSA Prisoner of War, James M. Morey, Harts Island, NY Harbor Prison Camp 27 (period docketing dates the cover to 1865). *In 1865, as the Civil War was ending, the Federal government used the Island as a prison camp for Confederate soldiers, for four months in 1865. Of the 3,413 captured Confederate soldiers, 235 died. This final POW camp, located on Long Island Sound about twenty miles north of the city wasn't even used until April 1865, the month the Civil War came to an end. Within the four months of its operation, nearly 7 percent of the camp's POWs died. Only 22 covers are reported from this prison; all are from the Morey correspondence (James M. Morey (1844-1923), was captured at Orangeburg, S.C., sent to Harts Island Prison on April 10th and released on June 14th)* ..... 500.00

**1867 Grill Issue**

- 40 ○ 1867 10c green, E.Grill, used, well centered with wide, even margins, nice impression, a true condition rarity, with 2017 PSAG graded "95J" (SMQ \$4,750) .....(89) 2,500.00
- 41 ○ 1867 12c black, E.Grill, used, nicely centered, with 2020 PSAG certificate graded "80" (SMQ \$400) .....(90) 300.00



- 42 ★ 1867 12c black, F.Grill, l.h., usual centering, with 2020 PSAG certificate graded "75" (SMQ \$2,750) .....(97) 1,800.00

**1875 Re-Issue of the 1861-66 Issue**

- 43 ★ 1875 1c blue, h.r., well centered, v.f., only 3,195 sold, with 2019 PSE certificate, cat. \$750 .....(102) 700.00



- 44 ★ 1875 5c brown, l.h., beautiful color, fresh and v.f., only 672 sold, with 2020 PSE certificate, cat. \$2,500 .....(105) 2,500.00
- 45 ★ 1875 12c black, h.r., sharp impression, fresh and fine, only 389 sold, with 1996 PSE certificate, cat. \$3,500 .....(107) 500.00





49



51



53



55



56



57



58



64



65



68



69



70



71



72



76



77



78



79



82



83



84



93



87



81



88



89



## 1869 Pictorials



- 46 P 1869 1c-90c complete set of eleven different hybrid Large Die Proofs, including 15c Type III, all on 135x190mm cards, fresh colors, v.f., cat. \$8,000.....(112P1-122P1,129P1) 2,000.00
- 47 ★ 1869 2c brown, l.h., well centered with wide margins, fresh and v.f., with 2015 PFC, cat. \$500.(113) 700.00
- 48 ★★ 1869 3c ultramarine, n.h., v.f., with a photocopy of a 2018 PSE certificate for a block of six from which this originated, .....(114) 250.00
- 49 ★★ 1869 3c ultramarine, Split Grill variety, n.h., fresh and v.f., with 2020 PSAG certificate (catalogue value for hinged) cat. \$275 .....(114var) 300.00



- 50 ★★田 1869 3c ultramarine, Split Grill variety, top margin block of four, n.h., fresh color, fine-v.f., with 2020 PSAG certificate (catalogue value for hinged singles) cat. \$1,100.....(114var) 1,000.00
- 51 ★ 1869 15c brown and blue, type II, small h.r., nice color, fine, with 2020 PFC, cat. \$2,750 .....(119) 600.00



- 52 P田 1869 24c green and violet, plate proof on india, bottom plate number and imprint block of eight, few small faults, v.f. appearance, scarce and impressive multiple, cat. \$6,000 .....(120P3) 1,800.00

- 53 ○ 1869 24c green and violet, blue cancels, well centered, v.f. and scarce with blue cancels, with 2008 PSE certificate, cat. \$900.....(120) 850.00



- 54 (★) 1869 30c ultramarine and carmine, unused without gum, well centered with jumbo margins, fresh color, with 2020 PSAG certificate graded "90J" (SMQ \$3,850) .....(121) 3,000.00
- 55 ○ 1869 30c ultramarine and carmine, used, well centered, with 2014 PSE certificate graded "VF-XF 85" (SMQ \$900) .....(121) 500.00
- 56 ○ 1869 90c carmine and black, used, nice color, fine, with 2020 PSAG certificate, cat. \$1,800 .....(122) 850.00

### 1875 Re-Issue of the 1869 Pictorials

- 57 (★) 1875 1c buff, unused without gum, well centered, v.f., with 2012 PSAG certificate, cat. \$220....(123) 250.00
- 58 ★ 1875 2c brown, small h.r., nice color, v.f., with 2020 PFC, cat. \$600 .....(124) 400.00



59



60

- 59 ○ 1875 6c blue, used, fresh color, fine, a rare stamp used, only 2,226 sold, with 2019 PFC, cat. \$3,000.....(126) 1,200.00
- 60 ★ 1875 12c green, h.r., nice color, only 1,584 sold, with 2020 PSAG certificate graded "75" (SMQ \$1,750) .....(128) 1,200.00



- 61 ★ 1875 90c carmine and black, h.r., perfectly centered with wide, even margins, nice color, slight, virtually invisible soiling, otherwise v.f., only 1,356 sold, with 1978 PFC, cat. \$3,750 .....(132) 1,500.00



- 62 (★) 1875 90c carmine and black, unused without gum, fresh color, fine, with 2018 PFC (catalogued as unused without gum) cat. \$1,500 .....(132) 1,500.00



**1870-71 Issue**

- 63 ★ 1870 10c brown, H, Grill, large part original gum, disturbed, nice color, fresh and fine, with a photocopy of a 2019 PFC for a vertical pair from which it originated, cat. \$7,500 .....(139) 3,000.00

**1873 Continental Bank Note Company**

- 64 ★ 1873 3c green, l.h., fresh color, with 2020 PSAG certificate graded "80" (SMQ \$115) .....(158) 100.00  
 65 (★) 1873 10c brown, unused without gum, well centered, light diagonal crease, v.f. appearance, with 2018 PFC (catalogued as unused without gum) cat. \$250 .....(161) 150.00



- 66 ★ 1873 90c rose carmine, small h.r., fresh color, fine, with 2020 PSAG certificate, cat. \$2,100 .....(166) 1,000.00

**1875 Special Printing of the 1873 Issue**

- 67 (★) 1875 30c greenish black, unused without gum as issued, usual scissors separated perforations, light stain, otherwise fine example of this rare Special Printing of which approximately 50 are believed to exist, with 1969 PFC, cat. \$12,000 .....(176) 6,500.00

**1881-1888 Banknote Issues**

- 68 ★★ 1881 1c gray blue, n.h., large boardwalk margins, a v.f. gem, with 1983 and 2006 PFCs (for a top margin single, selvage subsequently removed) cat. \$225 .....(206) 250.00  
 69 ★★ 1888 30c orange brown, n.h., post office fresh, fine, cat. \$900 .....(217) 250.00  
 70 ★★ 1888 90c purple, n.h., fine, with 2020 PSAG certificate, cat. \$2,500 .....(218) 650.00

**1890-93 Issue**

- 71 ★ 1890 2c lake, n.h., bright color, v.f., with 2019 PSAG certificate, cat. \$500 .....(219D) 350.00  
 72 ★ 1890 90c orange, l.h., v.f., with 2020 PSAG certificate, cat. \$450 .....(229) 350.00

### 1893 Columbian Exposition



- 73 P 1893 1c-\$5 complete set of Large Die Proofs, each printed directly on cards, each card approximately 218 x 143 mm, with "American Bank Note Co. New York" imprint at bottom, fresh, fine-v.f., cat. \$7,000 .....(230-245P1) 3,000.00



74

75

- 74 P 1893 1c-\$5, complete set of plate proofs on card, fine-v.f., cat. \$2,110 .....(230-245P4) 1,000.00  
 75 P 1893 1c-\$5, complete set of plate proofs on card, fine-v.f., cat. \$2,110 .....(230-245P4) 1,000.00  
 76 ★ 1893 15c dark green, l.h., well centered, with 2020 PSAG certificate graded "90" (SMQ \$400) (238) 300.00  
 77 ★ 1893 50c slate blue, small h.r., fresh color, fine, with 2018 PFC, cat. \$425 .....(240) 200.00  
 78 ★ 1893 50c slate blue, l.h., well centered, v.f., with 1998 PSE certificate, cat. \$425 .....(240) 350.00  
 79 ★★ 1893 50c slate blue, n.h., fresh and fine, with a photocopy of a 2020 PFC for a block of four from which it originated, cat. \$1,250 .....(240) 200.00



- 80 ★★ 1893 50c slate blue, n.h., well centered, fine, with 1980 PFC and 2020 PSAG certificate, cat. \$1,250 .....(240) 750.00  
 81 ☒ 1893 50c slate blue, \$1 salmon, also 1930 \$2.60 Zeppelin, each used on large registered cover, 50c with some staining and other cover faults, otherwise fine-v.f., cat. \$2,975 .....(240,241, C15) 500.00  
 82 ★ 1893 \$1 salmon, l.h., fresh color, fine, with 2017 PSE certificate, cat. \$1,000 .....(241) 400.00  
 83 (★) 1893 \$1 salmon, unused without gum, nice impression, small faults, v.f. appearance, cat. \$500(241) 150.00  
 84 ○ 1893 \$1 salmon, used, fresh color, well centered, with 2019 PFC graded "VF-XF 85" (SMQ \$775) ... .....(241) 500.00





- 85 ★ 1893 \$2 brown red, horizontal plate number, imprint and letter strip of four, h.r., nicely centered, some sensible reinforcing, left stamp with tiny thin spot, otherwise v.f. and rare piece, cat. \$8,500... (242) 5,000.00



- 86 ★★ 1893 \$2 brown red, n.h., v.f., with 2020 PSAG certificate, cat. \$3,500.....(242) 2,500.00
- 87 (★) 1893 \$2 brown red, unused (regummed), well centered, v.f. (catalogued as unused without gum) cat. \$500 .....(242) 300.00
- 88 (★) 1893 \$2 brown red, unused without gum, well centered, small faults, v.f. appearance (catalogued as unused without gum) cat. \$500.....(242) 200.00
- 89 田 1893 \$2 brown red, used block of four, nice color, usual centering, some perf. strengthening, light central postmark, fine and scarce block, cat. \$5,500.....(242) 750.00



- 90 ★ 1893 \$3 yellow green, l.h., nice color, almost v.f., with 2019 PFC, cat. \$1,350 .....(243) 1,000.00
- 91 ○ 1893 \$3 yellow green, lightly canceled, well centered, tiny thin, v.f. appearance, cat. \$750 .....(243) 300.00
- 92 ○ 1893 \$4 crimson lake, used, well centered, thin, v.f. appearance, cat. \$950.....(244) 300.00

### 1894-97 Bureau Issues

- 93 ★★ 1894 6c dull brown, top margin part imprint single, n.h., nice color, with 1983, 1992 and 2018 PFCs, the latter graded "VF 80" (SMQ \$475) .....(256) 400.00
- 94 ★ 1894 \$1 black, type I, small h.r., v.f., with 2020 PSAG certificate, cat. \$1,000 .....(261) 500.00



95



96

- 95 ★ 1894 \$1 black, type II, h.r., nicely centered, v.f., with 2020 PSE certificate, cat. \$2,100.....(261A) 1,200.00
- 96 ★ 1894 \$1 black, type II, l.h., well centered, v.f., with 2020 PSAG certificate, cat. \$2,100 .....(261A) 1,200.00





91



92



94



98



99



100



101



102



104



107



103



112



110



117



118



119



121



124



125



129



135



136



137





97 ★★	1894 \$1 black, type II, n.h., fresh color, with 2020 PSAG certificate graded "75" (SMQ \$4,450) .....(261A)	2,500.00
98 (★)	1894 \$2 bright blue, unused (regummed), small faults, fine (catalogued as unused without gum) cat. \$1,100 .....(262)	250.00
99 ○	1894 \$2 bright blue, used, creased and other faults, fine appearance, with 2018 PSE certificate, cat. \$1,200 .....(262)	150.00
100 ○	1894 \$5 dark green, used, well centered, tiny perf. thin, v.f. appearance, cat. \$2,600 .....(263)	1,200.00
101 ○	1894 \$5 dark green, used, thin, creased and some frayed perforations, otherwise fine, with 2018 PFC, cat. \$2,600 .....(263)	400.00
102 S	1895 2c-\$5, handstamped "Specimen", 13 different (complete except for \$1 type II), with 5c blue, h.r., few small faults affecting low values, otherwise fine-v.f., cat. \$2,055 .....(267-276S)	700.00
103 ★★	1894 10c green, top and bottom Plate No. Imprint strips of three, also left sheet margin, imprint vertical pair, n.h., couple of minor gum skips or fingerprints, fresh, fine, cat. \$2,560 .....(273)	500.00
104 ★	1895 \$2 bright blue, h.r., nice color, with 2020 PSE certificate graded "VF 80" (SMQ \$950) .....(277)	750.00



105 ★★	1895 \$2 bright blue, bottom margin plate number single, n.h., well centered, fresh color, with 2019 PFC graded "VF-XF 85" (SMQ \$4,850) .....(277)	4,000.00
--------	-----------------------------------------------------------------------------------------------------------------------------------------------------	----------

### 1898 Trans-Mississippi Exposition



106 P	1898 1c-\$2, set of nine small die proofs from the Roosevelt Album, without gray backings, 2c, 4c and 8c with thin spots, otherwise v.f. and rare, only 85 sets produced, .....(285-293P2)	2,500.00
107 ★	1898 1c-50c, seven stamps, h.r., 50c with natural straight edge, fine-v.f., cat. \$1,142 .....(285-291)	250.00





- 108 ★★田 1898 4c orange, top margin plate number block of six, n.h. (right stamps with slightly streaky gum), nice color, fine-v.f., cat. \$3,250 .....(287) 1,200.00
- 109 ★★ 1898 5c blue, top margin vertical pair, natural straight edge at left, also 10c Pan-American, horizontal pair, natural straight edge at bottom, n.h., fine, cat. \$1,200 (web photo) .....(288,299) 400.00
- 110 ★ 1898 50c sage green, small h.r., fine, with 2017 PFC, cat. \$600 .....(291) 200.00



- 111 ★(★) 1898 50c sage green and \$1 black, bottom margin plate number and imprint horizontal pairs (\$1 rejoined), 50c h.r., \$1 unused, small faults, fine-v.f. appearance, cat. \$2,900 .....(291,292) 1,000.00
- 112 ☒ 1898 50c sage green, left sheet margin single, centered to top, used on 2c stationery entire envelope registered from New Orleans July 30, 1898, via New York (1 Aug) to Hamburg, Germany, with arrival pmk (11 Aug) on back, fine, cat. \$1,750 .....(291) 300.00



- 113 ★★ 1898 \$1 black, n.h., beautiful color, fresh and fine, with 2020 PFC, cat. \$3,750 .....(292) 2,000.00



- 114 ○ 1898 \$1 black, lightly canceled, well centered, with 2020 PFC graded "VF-XF 85" (SMQ \$850) (292) 700.00



115



116

- |     |     |                                                                                                                                |       |          |
|-----|-----|--------------------------------------------------------------------------------------------------------------------------------|-------|----------|
| 115 | ★★  | 1898 \$2 orange brown, left margin single, n.h., fresh and v.f., with 2004 and 2019 PSE certificates, cat. \$5,750 .....       | (293) | 3,000.00 |
| 116 | ★   | 1898 \$2 orange brown, small part original gum, well centered, with 2020 PSE certificate graded "VF-XF 85" (SMQ \$2,250) ..... | (293) | 1,200.00 |
| 117 | ★   | 1898 \$2 orange brown, h.r., nicely centered, tiny thin speck, otherwise v.f., cat. \$1,900.....                               | (293) | 700.00   |
| 118 | ★   | 1898 \$2 orange brown, h.r., thin, fine appearance, cat. \$1,900.....                                                          | (293) | 250.00   |
| 119 | (★) | 1898 \$2 orange brown, unused (regummed), small faults, fine appearance, cat. \$950.....                                       | (293) | 250.00   |



- |     |   |                                                                                                          |       |          |
|-----|---|----------------------------------------------------------------------------------------------------------|-------|----------|
| 120 | ○ | 1898 \$2 orange brown, used, well centered, with 2017 PSE certificate graded "XF 90" (SMQ \$3,000) ..... | (293) | 2,500.00 |
|-----|---|----------------------------------------------------------------------------------------------------------|-------|----------|

### 1901 Pan-American Exposition

- |     |   |                                                                                                                                |            |        |
|-----|---|--------------------------------------------------------------------------------------------------------------------------------|------------|--------|
| 121 | S | 1901 1c-10c, set of six, violet Specimen handstamps, l.h. or h.r., few rough perforations, still fine-v.f., cat. \$1,410 ..... | (294-299S) | 750.00 |
|-----|---|--------------------------------------------------------------------------------------------------------------------------------|------------|--------|



- |     |   |                                                                                                                                                                                                                                  |        |          |
|-----|---|----------------------------------------------------------------------------------------------------------------------------------------------------------------------------------------------------------------------------------|--------|----------|
| 122 | ★ | 1901 1c green and black, center inverted, small part disturbed original gum, small sealed tear and slight gum soaked perforations, otherwise fine example of this popular invert, with 2005 PSE certificate, cat. \$12,500 ..... | (294a) | 5,000.00 |
|-----|---|----------------------------------------------------------------------------------------------------------------------------------------------------------------------------------------------------------------------------------|--------|----------|



- |     |     |                                                                                                                             |          |        |
|-----|-----|-----------------------------------------------------------------------------------------------------------------------------|----------|--------|
| 123 | ★★田 | 1901 2c carmine and black, bottom margin double plate number block of twelve, n.h., well centered, v.f., cat. \$1,075 ..... | (295)    | 650.00 |
| 124 | ★   | 1901 2c carmine and black, showing dramatic upward shift of the vignette, l.h., v.f. and striking variety .....             | (295var) | 200.00 |
| 125 | ★★  | 1901 4c deep red brown and black, n.h., well centered with wide margins, v.f., with 2010 PSE certificate, cat. \$170.....   | (296)    | 200.00 |





- 126 ★★田 1901 4c deep red brown and black, bottom margin double plate number block of twelve, n.h., fine-v.f., cat. \$6,090 .....(296) 2,000.00



- 127 ★ 1901 4c deep red brown and black, center inverted, disturbed original gum, well centered with wide margins, expertly reperforated at top and right, diagonal crease and small thin, otherwise v.f. example of this rare inverted center, with 2019 PSE certificate (*it has been reported that a total of 203 4c Inverts were released, both with and without the small "Specimen" overprint (it is not known how many were overprinted). Some examples, both with and without the overprint, were given away by Third Asst. Postmaster General Edwin C. Madden. When postal authorities learned of the practice, they destroyed 194 copies and put one pane of 100 into the official archives. At a later date, 97 of these were traded for rarities missing from the archives. Scott notes that "Almost all unused examples of No. 296a have partial or disturbed gum. Values are for examples with full original gum that is slightly disturbed"*) cat. \$85,000 .....(296a) 15,000.00



- 128 ★★田 1901 8c brown violet and black, bottom margin double plate number block of twelve, n.h., fine-v.f., scarce, cat. \$9,460 .....(298) 3,500.00
- 129 ★ 1901 10c yellow brown and black, l.h., well centered, with 2007 PSE graded "XF 90" (SMQ \$200) ... .....(299) 150.00



- 130 ★★田 1901 10c yellow brown and black, corner margin plate number block of eight, n.h., fine-v.f., rare, cat. \$9,100 .....(299) 4,000.00



**1902-08 Issue**

- 131 ★ 1902 50c orange, l.h., well centered with wide margins, bright color, fresh and v.f., with 2019 PFC, cat. \$400 .....(310) 500.00



- 132 ★★ 1902 \$1 black, n.h., perfectly centered with wide margins, sharp impression, a true condition rarity, with 2018 PSAG certificate graded "98", only three recorded in the PSE Population Report (without any n.h. copies grading higher)(SMQ \$33,500) .....(311) 10,000.00

**1902-08 Coil Stamps**

- 133 ★ 1908 1c green, horizontal pair, h.r., rich color, fresh and fine, only 80 pairs have been certified by the Philatelic Foundation, with 2005 PFC, cat. \$11,000 .....(318) 5,000.00

**1902-08 Issue**

- 134 ★ 1906 2c scarlet, International Vending Machine Co. private perforations, horizontal pair, small h.r., fresh color, right stamp with handstamp guarantee, fine, with 1963 PFC, and a copy of a 2015 PFC, both for a strip of four from which this originated, cat. \$2,250 .....(320b) 850.00

**1904 Louisiana-Purchase Exposition**

- 135 ★★田 1904 1c green, bottom margin plate block of six, n.h., nice color, fine-v.f., cat. \$600 .....(323) 350.00  
 136 ★★田 1904 2c carmine, bottom corner margin plate block of ten, n.h., fine-v.f., cat. \$840 .....(324) 350.00  
 137 ★★田 1904 2c carmine, bottom margin plate block of six, n.h., bright color, fine-v.f., cat. \$600 .....(324) 450.00





145



140



148



150



149



151



152



155



156



154



157



158



162



165



167



173



164



166



172



175



171





- 138 ★★田 1904 5c dark blue, top corner margin plate block of ten, n.h., with natural straight edge at right, fine, cat. \$3,050 .....(326) 1,200.00



- 139 ★★田 1904 10c red brown, bottom margin plate number block of six, n.h., nice color, fine-v.f., cat. \$4,000 .....(327) 1,500.00

### 1908-09 Issues

- 140 ★★ 1909 3c deep violet, bottom left sheet corner margin single, with parts of three adjoining stamps and sideographers initials, n.h., with 2019 PSE certificate graded "Gem 100" (SMQ \$200) .....(345) 150.00



- 141 ★★ 1909 5c blue, horizontal guide line pair, n.h., fresh color, fine-v.f., with a photocopy of a 2019 PFC for a strip of four from which it originated, cat. \$3,250 .....(355) 1,500.00



- 142 ★ 1909 10c yellow, horizontal guide line pair, l.h., light creases, otherwise fine-v.f. and rare joint line pair, with 2016 PSE certificate, cat. \$16,000 .....(356) 7,500.00



**1909 Bluish Paper**

143



144

- 143 ★★ 1909 6c red orange, n.h., fresh color, fine, with 2020 PSAG certificate, cat. \$3,000 .....(362) 1,500.00
- 144 ★ 1909 10c yellow, h.r., well centered with wide margins, fresh and v.f., with 2020 PFC, cat. \$1,600 ...  
.....(364) 1,800.00

**1909-13 Issues**

- 145 ★★ 1909 2c carmine, vertical paste-up strip of four, n.h., full margins all around, v.f., with 1994 PFC, cat. \$450 .....(368V) 300.00



- 146 ★田 1909 Lincoln Bluish Paper, 2c carmine, bottom margin plate block of six, l.h., nicely centered, fresh color, v.f., with 2000 PFC, cat. \$2,750 .....(369) 1,200.00



- 147 ○ 1911 3c deep violet, Type I, Orangeburg coil single, perf. 12 vertically, machine cancel as always, nicely centered, sealed tear and light crease, otherwise a v.f. example of this rare coil, with 1992 PFC, cat. \$10,000 .....(389) 4,000.00
- 148 ★ 1911 3c deep violet, horizontal guide line pair, l.h., nice color, with 2020 PSAG certificate graded "85" (SMQ \$500) .....(394) 350.00
- 149 ★★ 1911 3c deep violet, horizontal guide line pair, n.h., with 2019 PSE certificate graded "VF 80" (SMQ \$875) .....(394) 650.00

**1913-15 Panama-Pacific Exposition**

- 150 ★ 1915 5c blue, l.h., well centered with wide margins, with 2019 PFC graded "VF-XF 85" (SMQ \$175) .....(403) 150.00
- 151 ★★ 1915 10c orange, n.h., fresh color, v.f., with 2020 PFC, cat. \$1,600 .....(404) 900.00
- 152 ★★ 1915 10c orange, n.h., fresh color, fine, with 2019 PSAG certificate, cat. \$1,600 .....(404) 800.00



- 153 ★★ 1915 10c orange, n.h., well centered, with 2020 PSE certificate graded "VF-XF 85" (SMQ \$1,900) ..  
.....(404) 1,500.00

### 1914-17 Issues

- 154 1914 1c green, booklet pane of six, unused without gum, tiny corner margin crease at bottom left, otherwise fine, with 2018 PFC (this pane was formerly listed in Scott as number 424e and subsequent research has shown that these are fabrications made from ungummed press sheets which were housed in the Smithsonian) ..... 250.00
- 155 ★ 1914 8c pale olive green, l.h., well centered with wide margins, pencil notation on gum, with 2020 PSAG certificate graded "95" (SMQ \$125) .....(414) 100.00
- 156 ★ 1914 50c violet, l.h., v.f., with 2019 PFC, cat. \$210 .....(422) 150.00
- 157 ★★ 1914 20c ultramarine, n.h., wide margins, fresh and v.f., with 1997 PFC for a pair from which it originated, cat. \$425.....(438) 350.00
- 158 ★★ 1914 3c violet, n.h., nice color, with 2019 PSAG certificate graded "75" (SMQ \$350) .....(445) 350.00



- 159 ★ 1915 2c carmine, disturbed original gum, well centered, fresh color, small thin spots, otherwise v.f., seldom seen with such nice centering, with 1999 PSE certificate, cat. \$2,500.....(449) 1,500.00



- 160 ★★ 1915 4c brown, horizontal pair, n.h., near perfect centering, beautiful color, with 2020 PSAG certificate graded "98" (SMQ \$925) .....(457) 700.00



- 161 ★★ 1914 2c carmine, horizontal joint line pair, n.h., large margins all around, fresh color, with 1992 PFC and 2017 PSE certificate, the latter graded "XF 90" (SMQ \$1,750) .....(459) 1,500.00
- 162 ★ 1915 Perf. 10, \$1 violet black, horizontal pair, h.r., centered to bottom, fresh, v.g., cat. \$1,300 (460) 250.00



- |     |     |                                                                                                                                                                                                                        |          |
|-----|-----|------------------------------------------------------------------------------------------------------------------------------------------------------------------------------------------------------------------------|----------|
| 163 | ★★田 | 1915 2c pale carmine red, corner margin block of four, n.h., well centered, fresh and v.f., with a photocopy of a 2019 PFC for a block of 20 from which this came (catalogue value for singles) cat. \$1,300.....(461) | 1,500.00 |
| 164 | ★田  | 1915 2c pale carmine red, top Plate No. block of six, h.r. at top, pencil markings in margin, fresh, rare plate block, cat. \$1,500 .....(461)                                                                         | 300.00   |
| 165 | ★田  | 1916 3c violet, bottom margin plate block of six, h.r., fine, cat. \$1,500.....(464)                                                                                                                                   | 350.00   |
| 166 | ★   | 1916 \$1 violet black, l.h., well centered, v.f., with photocopy of a 2020 PSAG certificate for a block of four from which it originated, cat. \$600 .....(478)                                                        | 300.00   |
| 167 | ★★  | 1916 \$1 violet black, top margin single, n.h., fine, with photocopy of a 2020 PFC for a block of four from which this came, cat. \$1,400.....(478)                                                                    | 500.00   |



- |     |       |                                                                                                                                                                         |          |
|-----|-------|-------------------------------------------------------------------------------------------------------------------------------------------------------------------------|----------|
| 168 | ★/★★田 | 1916 \$1 violet black, block of four, bottom left stamp n.h., balance l.h., well centered, with 2019 PSE certificate graded "XF 90" (SMQ \$4,600 as singles) .....(478) | 3,000.00 |
|-----|-------|-------------------------------------------------------------------------------------------------------------------------------------------------------------------------|----------|

### 1917-29 Issues



- |     |    |                                                                                                                        |        |
|-----|----|------------------------------------------------------------------------------------------------------------------------|--------|
| 169 | ★★ | 1917 5c rose, n.h., well centered with wide margins, with 2019 PSE certificate graded "XF 90" (SMQ \$1,050) .....(505) | 900.00 |
|-----|----|------------------------------------------------------------------------------------------------------------------------|--------|



## 1914-17 Issues



- 170 ○ 1917 11c light green, perf. 10 at top, used, well centered with wide margins, thinned at top and right, v.f. appearance, with 2019 PFC, cat. \$3,750 .....(511a) 750.00

## 1917-29 Issues

- 171 ☒ 1917 30c orange red, top margin Plate No. 6911 block of six, used Aug.21, 1923 on flown cover from New York to Los Angeles, v.f., with arrival pmk .....(516) 150.00
- 172 ★★ 1917 2c carmine, n.h., bright color, fine, with a photocopy of a 2019 PSE certificate, cat. \$900(519) 350.00
- 173 ★ 1918 \$2 orange and black, top margin single, very lightly hinged, well centered, with 2019 PFC graded "VF-XF 85" (SMQ \$575) .....(523) 400.00
- 174 ○ 1918 \$5 deep green and black, used, well centered, with 2020 PSAG graded "95" (SMQ \$175) (524) 150.00
- 175 ★★ 1918 3c violet, right margin single, n.h., huge margins including adjoining stamps at top and bottom, with 2019 PSE certificate graded "Gem 100" (SMQ \$125) .....(535) 100.00



176



177

- 176 ★ 1919 2c carmine rose, type II, h.r., centered to upper right, bright color, fine, with 1970 PFC (catalogue value for fine) cat. \$2,700 .....(539) 1,500.00
- 177 ○ 1922 1c green, wavy line machine cancel, usual centering with design clear of perforations, fine example of this rare Rotary Press stamp, with 2020 PFC (catalogue value for fine) cat. \$3,500 (544) 2,000.00
- 178 ★★ 1920 \$2 carmine and black, n.h., well centered, v.f., with 2019 PFC, cat. \$240 .....(547) 200.00



- 179 ★田 1920 \$2 lake and black, top margin double plate number block of eight, one stamp l.h. (pos 7), balance n.h., nicely centered, fresh and v.f. A seldom seen plate block of this rarer shade, unlisted in Scott, with 2019 PSE certificate (the "regular" 547 plate block of eight catalogues \$3,750) (547a) 3,500.00





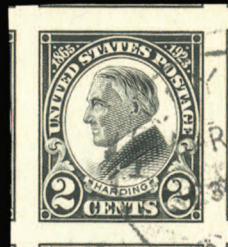
174



178



181



182



183



184



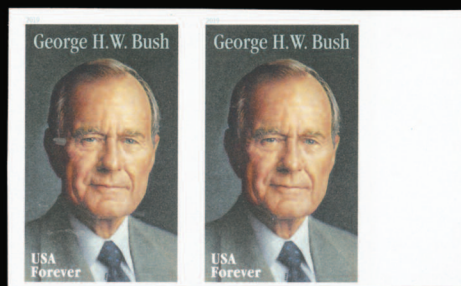
188



189



185



190



191



192



194



195



199



196



197







- 180 ★★ 1923 20c carmine rose, horizontal pair, imperf. vertically, n.h., usual centering, fine with 2001 PFC (catalogue value for fine) cat. \$5,000 .....(567a) 3,000.00
- 181 ★ 1923 2c carmine, small h.r., well centered, fresh color, with 2019 PFC graded "XF 90" (SMQ \$290) . .....(595) 250.00
- 182 ○ 1923 2c black, used, huge margins including parts of adjoining stamps on all sides, with 2008 PSE certificate graded "Gem 100J" (SMQ \$150 for "100") .....(611) 100.00
- 183 ★★ 1929 9c light rose, right margin single, n.h., well centered, with 2019 PSE certificate graded "XF-Sup 95" (SMQ \$165) .....(667) 150.00
- 184 ★田 1929 Nebraska, 1c-10c, complete set in blocks of four, 10c hinged, others with two stamps hinged and two n.h., fine-v.f. ....(669-679) 300.00

### 1930-79 Issues

- 185 ★ 1933 5c blue, horizontal pair, imperf. vertically, h.r., v.f., cat. \$1,750 .....(734a) 600.00



- 186 ★★ 1938 \$5 red brown and black, n.h., well centered, with 2019 PSE certificate graded "XF 90" (SMQ \$2,400, which is inexplicably low for this grade) .....(834a) 3,500.00
- 187 ★★田 1943 Overrun Nations, 5c sheet of 50, "Norway" appears double on the left half of the sheet, at least 25 stamps with apparently doubled name, also another Norway sheet with reverse printing of flag colors, all n.h., v.f. (web photo).....(911var,911b) 1,500.00
- 188 ★★ 1961 Project Mercury, 4c imperforate vertical pair, n.h., v.f. ....(1193var) 500.00
- 189 ★★田 1961 Project Mercury, 4c imperforate sheet margin block of four, n.h., v.f. ....(1193var) 750.00

### Modern Issues

- 190 ★★ 2019 George J. W. Bush, Forever stamp, horizontal imperf. pair (die cuts omitted), v.f. ....(5393var) 500.00

### Air Post

- 191 ★★田 1918 6c orange, upper left sheet corner margin block of six, marginal notations at left, stamps n.h., minor gum skips at upper right, fresh and fine .....(C1) 100.00
- 192 ★★ 1918 16c green, n.h., well centered, with 2017 PSAG certificate graded "95" (SMQ \$425) .....(C2) 200.00



- 193 ★★ 1918 24c carmine rose and blue, n.h., near perfect centering, fresh color, with 2016 PSAG certificate graded "98" (SMQ \$1,500) .....(C3) 700.00
- 194 ★★ 1923 24c carmine, n.h. well centered, with 2019 PSE certificate graded "XF-Sup95" (SMQ \$450) .... .....(C6) 200.00
- 195 ★★ 1927 20c yellow green, left margin plate number single, well centered with jumbo margins, with 2020 PSAG certificate graded "95J" (SMQ \$135) .....(C9) 100.00





200



201



202



203



204



205



207



208



209



210



211



212



214



215



216



- 196 ★ 1930 Zeppelin, 65c-\$2.60, set of three, l.h., well centered, v.f., signed Calves, cat. \$1,060.(C13-15) 700.00
- 197 ★ 1930 65c-\$2.60, set of three, l.h., well centered, v.f., cat. \$1,060 .....(C13-15) 400.00



- 198 ★★田 1930 65c-\$2.60, set of three plate number blocks of six, n.h., nicely centered, without the usual gum bends or wrinkles, v.f., cat. \$15,200 .....(C13-15) 8,500.00
- 199 ★★ 1930 65c green, n.h., bright color, v.f., with 2019 PFC, cat. \$240 .....(C13) 150.00
- 200 ★★ 1930 65c green, n.h., well centered, v.f., with photocopy of a 2016 PFC for a block of four from which it originated, cat. \$240 .....(C13) 200.00
- 201 ★★田 1930 65c green, block of four, n.h., usual light gum bends, v.f. (catalogue value for singles) cat. \$960 .....(C13) 500.00
- 202 ☒ 1930 65c green, vertical pair, used on cover, with all appropriate cachets, v.f. ....(C13) 200.00
- 203 ★ 1930 \$1.30 brown, l.h., well centered, with 2019 PFC graded "XF-S 95" (SMQ \$475) .....(C14) 350.00
- 204 ★ 1930 \$1.30 brown, l.h., v.f., with 2013 graded "95" PSAG certificate, cat. \$475 .....(C14) 150.00
- 205 ★★ 1930 \$1.30 brown, n.h., nice color, tiny natural inclusion, fine, cat. \$550 .....(C14) 250.00



- 206 ★★田 1930 \$1.30 brown, top margin block of four with plate number, n.h., v.f., with 2020 PFC, cat. \$2,200 .....(C14) 1,500.00
- 207 ○ 1930 \$1.30 brown, used, nicely centered, with 2018 PFC graded "VF-XF 85" (SMQ \$475) .....(C14) 250.00







208 ○	1930 \$1.30 brown, used, well centered, with 2019 PSE certificate graded "VF-XF 85" (SMQ \$475) .. .....(C14)	300.00
209 ☒	1930 \$1.30 brown, two plate number singles used on cover addressed to Brazil, with all appropriate cachets, small stain at top not affecting stamp, fine .....(C14)	600.00
210 ★	1930 \$2.60 blue, left margin plate number single, l.h., v.f., cat. \$525.....(C15)	350.00
211 ★★	1930 \$2.60 blue, n.h., fresh color, with 2018 PFC graded "VF 80" (SMQ \$950) .....(C15)	600.00
212 ○	1930 \$2.60 blue, top margin plate number single, used, well centered, with 2019 PFC graded "VF- XF 85" (SMQ \$725) .....(C15)	400.00



213 ★★	1931 5c violet, top margin single, n.h., perfectly centered with jumbo margins, fresh color, a true gem, with 2019 PSAG certificate graded "100J", only one known with this grade in the PSE population report (SMQ \$1,450 for "100") .....(C16)	750.00
214 ★★田	1933 Century of Progress, 50c green, sheet of 50, n.h., some perf. separations and telescoping, fresh, fine-v.f., cat. \$4,125.....(C18)	1,000.00
215 ☒	<b>Flight Covers.</b> 1933 Darius-Girenas Transatlantic flight cover franked with 3c Newburgh, tied by Brooklyn July 15 cds, also "Lituanica" and corresponding violet cachets, signed by both fliers, Kaunas July 18 arrival pmk on back, v.f. ....	250.00
216 ☒	1945 6c stationery entire envelope (with letter of contents) handstamped "R.F.", with "Batiment de Ligne Richelieu" datestamp alongside, sent from the French battleship to New York, censor seal and French "Ouvert" handstamps at left .....	250.00
217 ☒	<b>Zeppelin Flights.</b> 1928 Germany flight cover from New York to Bavaria, attractively franked with C4- 6, 7-9, 11, etc., with corresponding cachet and arrival pmk, fine-v.f. ....	150.00
218 ☒	1928 Germany flight cover from New York to Cottbus, attractively franked with C4-6, 8-11, etc., with corresponding cachet and arrival pmk, fine-v.f. ....	150.00
219 ☒	1929 Round the World flight Los Angeles to Lakehurst, franked with block of 8x8c green (C4), with corresponding cachet and Aug 29, 1929 arrival pmk .....	150.00
220 ☒	1930 Europe-Pan-America flight Lakehurst to Spain, nicely franked with a combination of Air Post and Regular Issue stamps paying \$1.32, with Seville 6 June 30 arrival pmks .....	150.00
221 ☒	1930 Europe-Pan-America round flight New York to Lakehurst, franked with \$2.60 regular issues, with corresponding cachets and arrival pmk .....	150.00

### Special Delivery

222 ★	1893 10c orange, l.h., well centered, nice color, v.f., with 1993 PFC, cat. \$300 .....(E3)	200.00
-------	---------------------------------------------------------------------------------------------	--------



223 ★★田	1902 10c ultramarine, bottom corner margin plate block of eight, n.h., well centered, fresh color, with 2020 PSAG certificate graded "85" (catalogue value for ungraded plate block and two singles) cat. \$5,500.....(E6)	5,500.00
---------	----------------------------------------------------------------------------------------------------------------------------------------------------------------------------------------------------------------------------------	----------



- 224 ★★田 1925 15c deep orange, right margin plate block of six, n.h., fine-v.f., cat. \$750 .....(E13) 300.00

### Postage Dues



- 225 ★★ 1914 3c carmine lake, n.h., bright color, well centered, fresh and v.f., with 2020 PSAG certificate, cat. \$3,000 .....(J54) 2,500.00

### Offices in China

- 226 ★田 1919 12c on 6c red orange, plate block of six, h.r., top stamps slightly oxidized, otherwise fine-v.f., cat. \$800 .....(K6) 150.00

### U.S. Postal Agency Siberia

- 227 1919 (June 12) cover franked with 3c Victory stamp, tied by "U.S. Postal Service Siberia" cds, pre-addressed "Air Plane Stamp News" Roessler cachet, oval "Passed as Censored AM E.F. Siberia" handstamp at left, somewhat roughly opened at top, fine ..... 150.00
- 228 1919 (June 6) cover franked with 3c Victory stamp, tied by "U.S. Postal Service Siberia" cds, pre-addressed "Air Plane Stamp News" Roessler cachet, oval "Passed as Censored AM E.F. Siberia" handstamp at left, minor toning, fine cover ..... 150.00
- 229 1919 (June 12) cover franked with 3c violet, tied by "U.S. Postal Service Siberia" cds, pre-addressed "Air Plane Stamp News" Roessler cachet, oval "Passed as Censored AM E.F. Siberia" handstamp at left, fine ..... 150.00
- 230 1919 (Nov 26) Soldier's Mail cover to California, with "U.S. Postal Agency Siberia" departure cds, boxed "A.E.F. Siberia Censored" at bottom, also two unused picture postcards, one "Greetings from the A.E.F. in Siberia", the other with a naval scene, minor cover wear, fine ..... 150.00

### Official Stamps

- 231 ★★ 1873 Interior, 1c vermilion, n.h., v.f., with 2019 PFC for a block of eight from which it originated, cat. \$170 .....(O15) 200.00
- 232 ★★田 1873 Post Office, 6c black, block of four, n.h., bottom stamps creased, otherwise v.f. (catalogue value for singles) cat. \$300 .....(O50) 100.00



- 233 S 1875 Post Office, 12c black, overprinted Specimen in red, without gum as issued, fine, only 93 sold, with 2015 PSE certificate, cat. \$1,600 .....(O52S) 1,000.00
- 234 ★★ 1879 Agriculture, 3c yellow, n.h., fresh and fine, with 2016 PFC, cat. \$1,250 .....(O95) 500.00
- 235 (★) 1879 Treasury, 90c brown, unused (regummed), small faults, fine appearance, with 2001 PFC, cat. \$3,250 .....(O113) 400.00

### Newspaper Stamps

- 236 ○ 1875 96c rose, blue brush stroke cancel with faint trace of a black cancel, vertical crease, otherwise fine, with 2020 William Crowe certificate, cat. \$1,000 .....(PR23) 250.00
- 237 (★) 1875 12c pale rose, unused without gum as issued, reperfected at top, small tear and light crease, fine appearance, only 1,313 sold, with 2019 Crowe certificate, cat. \$1,500 .....(PR40) 250.00

**Parcel Post**

238	✉	1913 5c dark carmine, straight edge at right, used on cover from Wilmette (30 Sep 1913) to Axim, Gold Coast, with arrival pmk on back, small stain, unusual destination (today Ghana) (web photo) .. .....(Q5)	100.00
239	★★	1913 50c carmine rose, n.h., fresh color, v.f., with 2019 PFC, cat. \$500 .....(Q10)	400.00
240	★	1913 \$1 carmine rose, l.h., well centered, fresh and v.f., with 2016 PFC, cat. \$250 .....(Q12)	200.00
241	★★	1913 \$1 carmine rose, natural straight edge at left, n.h., fresh and fine, cat. \$600.....(Q12)	200.00

**Postal Stationery - Air Post**

242	P	1968 13c Human Rights Year, oversized lettersheet, trial color printing, with "Human Rights Year" in black (instead of gray), folded horizontally with indicia only on one side, two rows of color bars on the other, tagging omitted, v.f., with 2010 PFC (web photo) .....(UC42var)	150.00
-----	---	---------------------------------------------------------------------------------------------------------------------------------------------------------------------------------------------------------------------------------------------------------------------------------------	--------

**Revenue Stamps**

243	○	1862 Proprietary, 2c blue, perforated at sides, ms cancel, fine, cat. \$300 .....(R13b)	150.00
-----	---	-----------------------------------------------------------------------------------------	--------



244	○	1862 Foreign Exchange, 70c green, imperforate, red cancel, large margins all around, with 2020 PSAG certificate graded "95" (SMQ unpriced) cat. \$650 .....(R65a)	1,200.00
245	○	1872 \$20 orange and black, manuscript cancels, well centered, small thin and crease, v.f. appearance, cat. \$900.....(R150)	250.00

**Cordials and Wine Stamps**

246	(★)田	1942 ½c-\$20, 59 different, singles and blocks of four, without gum as issued, fine-v.f., cat. \$2,042 (web photo).....(RE108/203)	250.00
-----	------	------------------------------------------------------------------------------------------------------------------------------------	--------

**Distilled Spirits Excise Tax**

247	(★)	1933 \$60.00 Black on Blue, 10bbl. Beer, black on bright blue paper, unused, full margins all around, v.f., cat. \$800 .....(REA178)	500.00
-----	-----	--------------------------------------------------------------------------------------------------------------------------------------	--------

**State Revenues - Arizona**

248	P	1943 Arms of Arizona proof with great seal of the state, also Tobacco Tax, plate proof on india, vertical strip of five card mounted, v.f. (web photo).....	200.00
-----	---	-------------------------------------------------------------------------------------------------------------------------------------------------------------	--------

**Louisiana**

249	P	1880 "Louisiana Law Stamp" 10c brown, die proof mounted on "Index Copy" card, dated at top, v.f. (web photo).....	200.00
-----	---	-------------------------------------------------------------------------------------------------------------------	--------

**Massachusetts**

250	P	1930 Massachusetts Stock Transfer Tax, \$50 green, large die proof, with inscriptions corrected in Chinese white, also Deed Excise in blue, die proof, each with serial numbers on top, mounted on large index manila envelope, along with eight different engravings used for center design, numerous inscriptions, fine (web photo).....	250.00
-----	---	--------------------------------------------------------------------------------------------------------------------------------------------------------------------------------------------------------------------------------------------------------------------------------------------------------------------------------------------	--------

**Missouri**

251	P	1930 Missouri Cigarette Tax, master die proof in black, with serial number at bottom, mounted on large index manila envelope, along with six different engravings used for design of center, numerous inscriptions, fine (web photo).....	250.00
-----	---	-------------------------------------------------------------------------------------------------------------------------------------------------------------------------------------------------------------------------------------------	--------





239



240



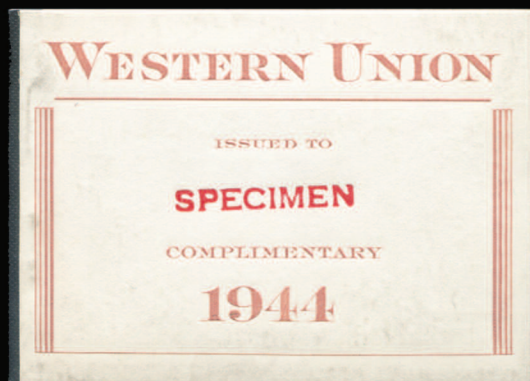
241



267



245



257



247



268



273



272



264



265



276



**Ohio**

- 252 P 1901 "Penny Savings Fund of Cleveland", master die proof in green, value omitted, "Cents" only at bottom, adhered on Index Copy card, with appropriate notations, tape stains, unusual item (web photo) ..... 150.00

**Pennsylvania**

- 253 S田 1954-78 Philadelphia, PA, Documentary Specimens, 50c, \$1, \$5, \$10, \$50 and \$100, six different sheets of 25, also \$500 and \$1000 panes of five with intact coupons at left, each stamp with security punch, n.h., v.f. (web photo) ..... 500.00
- 254 S田 1954-78 Harrisburg, PA, School District Deed Tax stamps, \$500 pale red, sheet of 25, each stamp with security punch, handstamped "Specimen" at bottom margin, n.h., v.f. (web photo) ..... 150.00

**Wisconsin**

- 255 P 1930s Wisconsin Occupational Tax, 2c green, also 1/2c black Cigarette Tax, die proofs, each with serial numbers on top, mounted on large index manila envelope, along with seven different engravings used for design of center, numerous inscriptions, fine (web photo)..... 250.00

**Telegraph Stamps**

- 256 P 1885 selection of five hybrid Trial Color die proofs, card mounted, with 10c, 15c, 25c and 50c in green, also 25c in sepia brown (defective), fine (web photo) ..... 200.00
- 257 田 1944 Western Union, unexploded booklet with panes of nine of 5c (3) and 25c (4), each stamp with security punch and overprinted "C" in red, also handstamped "Specimen" on front cover, v.f., rare intact booklet .....(16T110-11) 250.00

**American Banknote Co. Proofs**

- 258 P 1864 Foster Mc Clelland Co. Die proofs in black, two different American Bank Note Co. large dies on india, v.f. (web photo) ..... 250.00
- 259 P 1870-90 American Eagle, selection of seven different die proofs, die sunk on card, trimmed to smaller size, variety of stages, some toning, attractive group (web photo)..... 500.00
- 260 P 1891 Tacoma Trust & Savings Bank 5c black, large die proof with American Bank Note Company imprint at bottom, mounted on "Index Copy" card, dated at top, v.f. (web photo) ..... 150.00
- 261 P 1893 "Penny Provident Fund", 25c large die proof in green, additional denominations 1c, 2c, 3c, 5c, 10c, 50c, \$1 and \$100 in margins, adhered on Index Copy card, dated at bottom, tape stains, interesting item (web photo) ..... 150.00
- 262 P 1938 Eaton Paper Corporation, three die proofs, two with view of the New York Public Library (in green and black) and affixed to single card, the other with "Flagship over Downtown New York" in violet and affixed to separate card, with various notes and annotations, v.f. (web photo) ..... 150.00
- 263 ★★田 1964 imperforate sheet of 23, engraved by Czeslaw Slania, showing boxing champions 1889-1964, in gray, v.f. and attractive sheet printed by the American Bank Note Company, with pencil and ink markings in bottom margin (web photo)..... 250.00

**CONFEDERATE STATES OF AMERICA**

- 264 ★★田 1862 5c blue, sheet of 100, wide selvage all around, pos.30 showing "white tie" variety, n.h., some wrinkles and marginal creases, v.f. sheet (catalogue value for hinged blocks of four, without premium for variety) cat. \$2,750.....(7) 1,000.00
- 265 ★★田 1862 5c deep blue, sheet of 100, wide selvage all around, n.h. (dried gum as often), few internal wrinkles and bends, v.f. sheet (catalogue value for hinged blocks of four, without premium for variety) cat. \$2,750.....(7) 1,000.00



- 266 ★★ 1863 2c brown red, n.h., huge margins with part of adjoining stamps on all sides, a gem, with 2020 PSAG certificate graded "100J" (SMQ \$1,250) .....(8) 500.00



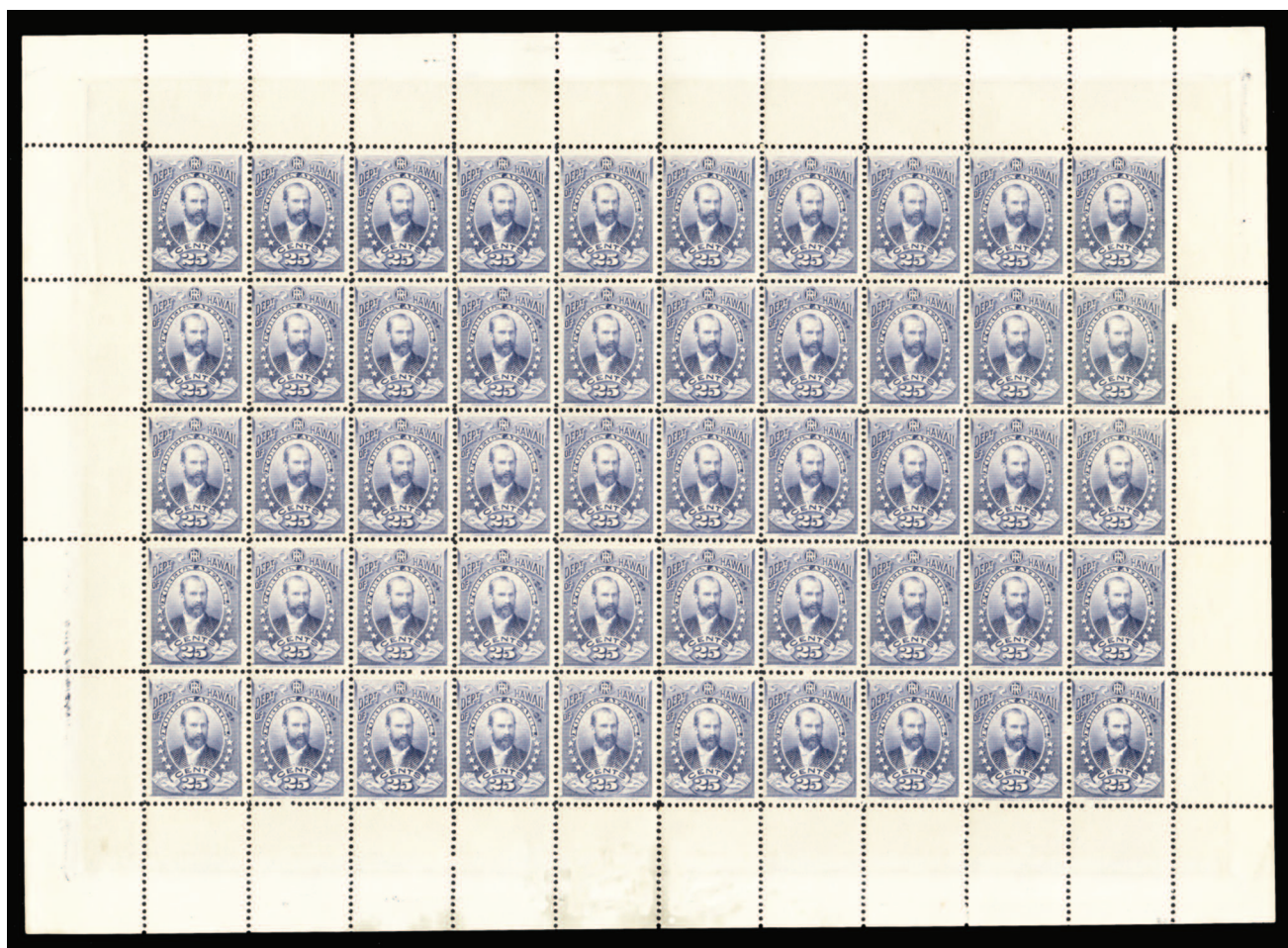
- 267 ★ 1863 10c blue, h.r., margins all around, light horizontal crease, otherwise v.f., cat. \$950 .....(9) 350.00
- 268 ★★ 1863 10c greenish blue, n.h., huge margins all around with parts of adjoining stamps on all sides, a true gem, with 2014 PSE certificate graded "Gem 100J" (SMQ \$375 for "100" in the regular shade) .....(11c) 300.00



- 269 ★★ 1862 1c orange, n.h., bottom margin single with huge margins and parts of adjoining stamps on all sides, a true gem, with 2015 PSE certificate graded "Gem 100" (SMQ \$1,700) .....(14) 750.00

## UNITED STATES POSSESSIONS

### HAWAII



- 270 ★★田 Officials. 1896 Thurnston, 5c dark brown, 10c bright rose, 12c orange and 25c gray violet, sheets of 50, with margins all around, folded between stamps, occasional perf. separations, uniformly well centered and as fresh as the day they were issued, v.f., catalogued as singles, cat. \$21,000.....(O2,4-6) 5,000.00

- 271 ★★田 1896 Thurnston, 5c dark brown (30), 10c bright rose (83) and 25c gray violet (25), all large multiples, n.h., uniformly well centered and as fresh as the day they were issued, v.f., catalogued as singles, cat. \$13,420 .....(O2,4-6) 3,000.00

**PHILIPPINES**

- 272 ★★ 1906 Bandholtz "O.B." in green (4), yellow (3), black (4), red (4) and blue (3), selection of 18, n.h., with interleaving on back, some straight edges, fine .....(241/44var) 300.00
- 273 ★★ 1906 Bandholtz "O.B." in black, overprinted on 2c-30c, ten different, n.h., fine-v.f. ....(241-50var) 150.00
- 274 ★★ 1906 Bandholtz "O.B." in red, overprinted on 2c-30c, ten different, n.h., fine-v.f. ....(241-50var) 250.00
- 275 ★★ 1906 Bandholtz "O.B." in blue, overprinted on 2c-30c, ten different, n.h., some interleaving on back, 16c and 20c straight edges, fine-v.f. ....(241-50var) 350.00
- 276 ★★田 1906 Bandholtz "O.B." in blue, overprinted on 2c green, bottom sheet margin Plate No. and Imprint block of twelve, dried (tropical) gum, some perf. separations, fine-v.f. ....(241var) 150.00
- 277 ★★田 1906 Bandholtz "O.B." in blue, overprinted on 2c green, top sheet margin Plate No. and Imprint block of 20, pos. 13 showing broken "B", dried (tropical) gum, selvage faults, fine-v.f. ....(241var) 400.00



- 278 ★★田 1906 Bandholtz "O.B." in green, overprinted on 2c green, top sheet margin Plate No. and Imprint block of 40, pos. 13 showing broken "B", dried (tropical) gum, selvage faults, fine-v.f. ....(241var) 600.00
- 279 ★★田 1906 Bandholtz "O.B." in blue, overprinted on 4c red, top sheet margin Plate No. and Imprint block of ten, interleaving on back, fine and scarce block .....(242var) 250.00
- 280 ★★田 1906 Bandholtz "O.B." in blue, overprinted on 6c violet, top sheet margin block of six, straight edge at left, lower right stamp showing broken "B" (position 13), interleaving on back, fine-v.f. ....(243var) 200.00
- 281 ★★田 1906 Bandholtz "O.B." in blue, overprinted on 6c violet, top sheet margin Plate No. and Imprint block of ten, interleaving on back, v.f. and scarce block .....(243var) 350.00
- 282 ★★田 1906 Bandholtz "O.B." in blue, overprinted on 26c violet brown, top sheet margin Plate No. and Imprint block of ten, interleaving on back, fine and scarce block .....(249var) 350.00

**END OF THE FIRST SESSION**





272



277



274



275



279



280



281



282