

AUCTION SALETUESDAY, JULY 7, 2020

AT 1:00 P.M.

United States Postmasters' ProvisionalsBaltimore, Md.



- 8001 ☒ 1845 Baltimore, Maryland, 5c red on manila entire envelope, with clear strikes of signature, provisional handstamps "Paid" and "5" in oval, blue "Baltimore Md. May 5" (1846) cds alongside at left, cover addressed to Miss Susan Julia Mayer, care of Geo. M. Keim at Reading Pa., faint stains as often, still v.f., with 1980 PFC. A rare Baltimore "5 Cent" Provisional, one of only nine recorded in red (in the unpublished 1996 Don Shearer census, which lists nine 5c envelopes struck in red ink, dated from March to May 1846. While the quality of the red strikes is generally weak, the envelope offered here has relatively clear strikes. The U.S. Philatelic Classics Society census lists only seven 3XU2 entires) cat. \$10,000(3XU2) 6,500.00

New York, N.Y.

- 8002 ○ 1845 5c black, "ACM" connection, blue pen cancel, full to large margins all around, fine, with 2019 William T. Crowe certificate, cat. \$475(9X1) 150.00

St. Louis, Mo.



- 8003 ○ 1845 St. Louis Bear, 10c black on greenish paper, light red cds, full margins to just clear at lower right, nice impression, small faults, fine appearance of this popular rarity, with 2019 PSE (Scott value of \$8,000.00 is for a normally pen-cancelled stamp off cover, footnote states: "Values for used off-cover stamps are for pen-cancelled copies. Handstamp cancelled copies sell for much more.") cat. \$8,000(11X2) 3,500.00

1847 Issue

- 8004 ○ 1847 5c dark brown, two copies, each pen canceled, margins all around, minor thin spots, fine appearance(1) 200.00

| | | |
|--------|---|--------|
| 8005 ○ | 1847 5c red brown, black grid cancel, large margins all around, with 2019 PSAG certificate graded "90" (SMQ \$625)(1) | 300.00 |
| 8006 ☒ | 1847 5c red brown, full to large margins all around, tied by red grid cancel on FL from New York to Bordeaux, France, endorsed "per Steamer Niagara", boxed "Colonies & C.Art.13" handstamp, Calais transit, charged "15c" on arrival, with London transit and Bordeaux arrivals on reverse, filing fold through the stamp, otherwise a v.f. letter to France, with 1997 van der Linden and 1998 Holcombe certificates, cat. \$2,500(1) | 750.00 |
| 8007 P | 1847 10c dark brown, trial color proof on bond paper, with cross-hatchings, v.f., cat. \$800...(2TC1b) | 400.00 |



| | | |
|--------|---|-----------|
| 8008 ★ | 1847 10c black, unused with disturbed original gum, full to large margins all around, sharp impression, a rare sound unused example in exceptional condition, with 2017 PFC and 2018 PSE certificate, the latter graded "VF-XF 85", one of only three with this grade in the SMQ Population report, with only two graded higher. The 10c 1847 is one of the most difficult stamps to obtain in completely sound, original gum condition, with full margins all around (SMQ \$60,000)(2) | 40,000.00 |
| 8009 ☒ | 1847 10c black, margins all around, fine, tied by blue grid cancel on FL used in 1847 from Baltimore, Md to Cattaraugus County, New York, addressed to Reverend Asher Wright, Cattaraugus Reservation (Reverend Asher Wright worked for 43 years among the Seneca, on the Cattaraugus Reservation), fine 1847 usage to a very unusual destination(2) | 1,000.00 |

1875 Reproductions of the 1847 Issue

| | | |
|--------|---|--------|
| 8010 P | 1875 10c black, plate proof on card, v.f., cat. \$250.....(4P4) | 150.00 |
|--------|---|--------|

1851-57 Issue



| | | |
|--------|--|-----------|
| 8011 ○ | 1851 1c blue, type I, pos. 7R1E, black cancel, margins full at sides with parts of adjoining stamps, to just barely touching at upper and lower right, fresh color, with 2017 PSE certificate graded "VF 80", one of only two known in this grade (the published census compiled by Jerome S. Wagshal contains at least 98 unduplicated records of Scott No.5. There are probably no more than ten examples existing outside of the Wagshal census population, including the example offered in this auction. Therefore, U.S. Scott No.5 is the rarest of all United States stamps issued regularly prior to the 1868 Grills) (SMQ \$150,000)(5) | 65,000.00 |
| 8012 ○ | 1851 1c blue, se-tenant horizontal pair, types II-IIIa, pos. 35-36L1E, used, margins touching at upper left and right, full on all other sides, fine, with 2019 PFC, cat. \$1,450(7-8A) | 400.00 |



- | | | |
|--------|---|-----------|
| 8013 ★ | 1851 1c blue, type III, Plate 4, large part original gum, full to just clear margins, fresh color and sharp impression, fine and especially rare with original gum, with 2019 PSE certificate, cat. \$25,000(8) | 17,000.00 |
| 8014 ○ | 1851 10c green, type II, black cds, large margins all around, with 2019 PSE certificate graded "XF 90" (SMQ \$300)(14) | 250.00 |
| 8015 ○ | 1851 12c black, red grid cancels, large margins all around including parts of adjoining stamps at left, right and bottom, with 2020 PSE certificate graded "XF-Sup 95" (SMQ \$1,150)(17) | 800.00 |

1857-61 Issue



- | | | |
|----------|---|----------|
| 8016 ★ | 1857 1c blue, type I, l.h., fresh color, with 2019 PSE certificate graded "VF 80" (SMQ \$2,150) ..(18) | 2,000.00 |
| 8017 ○ | 1857 1c blue, type II, pos. 5L4, used, usual centering, nice color, fresh and fine, with 2001 PSE certificate, cat. \$260(20) | 100.00 |
| 8018 ○ | 1857 1c blue, type III, black cds and lightened pen cancels, usual centering, rich color, fine, with 1997 PSE certificate, cat. \$1,600(21) | 750.00 |
| 8019 ★ | 1857 1c blue, type V, l.h., well centered for this issue, fresh color, v.f., with 2012 PSE certificate, cat. \$140(24) | 150.00 |
| 8020 ★★ | 1857 1c blue, type V, n.h., usual centering, fresh color, with 2019 PFC for a block of four from which this originated (catalogued as hinged, never hinged not priced) cat. \$140(24) | 150.00 |
| 8021 (★) | 1857 3c rose, type I, unused without gum, well centered for issue, good color, faint thin, fine (catalogued as unused without gum) cat. \$950(25) | 150.00 |



- | | | |
|--------|--|----------|
| 8022 ○ | 1857 5c Indian red, type I, used, nicely centered, with 2018 PSE certificate graded "VF 80" (SMQ \$3,500)(28A) | 3,000.00 |
|--------|--|----------|

| | | |
|--------|--|--------|
| 8023 ★ | 1857 5c orange brown, type II, l.h., fairly well centered for this issue, fresh color, fine, with 2014 PSAG certificate for a block of four from which this originated, cat. \$1,200(30) | 500.00 |
| 8024 ★ | 1857 5c orange brown, type II, small h.r., nice color, fine, with 2018 PFC for a horizontal pair from which it originated, cat. \$1,200(30) | 250.00 |

1875 Reprints of the 1857-61 Issue

| | | |
|----------|--|--------|
| 8025 (★) | 1875 1c bright blue, unused without gum as issued, fresh and fine, with 2019 PSE certificate, cat. \$575(40) | 300.00 |
|----------|--|--------|



| | | |
|----------|---|----------|
| 8026 (★) | 1875 90c deep blue, unused without gum as issued, nice color, fresh and fine, only 454 sold, with 2019 PSAG certificate, cat. \$3,500(47) | 2,000.00 |
|----------|---|----------|

1861-68 Issues

| | | |
|---------|---|----------|
| 8027 E | 1861 3c Washington, Lowenberg Essay on onionskin paper, printed in reverse, horizontal strip of three, se-tenant with France 1c Empire, horizontal pair, all in brown, usual light creases, fine, scarce(63TC5) | 1,500.00 |
| 8028 P田 | 1861 1c "Lowenberg" (Patent 42,207) imperf. trial color proofs on "Starch" coated paper, five different blocks of four, without gum, few faults noted, otherwise fine-v.f. (The National Bank Note Company was impressed with Lowenberg's patent to the extent that they essayed it to the Post Office Department as a possibility for the prevention of reuse of stamps. It was essentially a decal that would destruct if one tried to remove it and reuse it. All values except the one-cent issue were essayed. They are quite fragile and the design often flakes off the glassine type paper carrying the design) cat. \$800(63TC5) | 200.00 |
| 8029 P田 | 1861 1c "Wyckoff" (Patent 53,723) trial color proofs on "China White" coated paper, eight different perforated blocks of four, with or without gum, some straight edges or minor faults noted, generally fine or better, scarce, cat. \$1,600(63TC6) | 500.00 |



| | | |
|--------|---|----------|
| 8030 ○ | 1861 10c dark green, red town postmark, beautiful color, fresh and v.f., with 2018 PFC, cat. \$1,710(62B) | 1,500.00 |
| 8031 ○ | 1861 3c rose, small faults, fancy "Lincoln in Circles of Stars" cancel of Albany, NY, excellent strike, with 1988 PFC (Skinner/Eno LC-NP15)(65) | 250.00 |
| 8032 ○ | 1861 12c black, black and red cancels, well centered with wide margins, nice impression, with 1996, 2005 and 2018 PFCs, the latter graded "XF 90" (SMQ \$375)(69) | 300.00 |
| 8033 ○ | 1861 24c red lilac, used, nice centering, with 2006 PFC graded "VF-XF 85" (SMQ \$575)(70) | 350.00 |
| 8034 ○ | 1861 24c red lilac, Cincinnati duplex cancel, fine, with 1993 PFC, cat. \$2,250(70c) | 400.00 |
| 8035 P | 1861 90c blue, large die proof on india, die sunk on card, linen hinge running down the left edge on reverse, fresh color, v.f., cat. \$500(72P1) | 150.00 |

| | | |
|---------|--|----------|
| 8036 ★田 | 1861 2c black, block of four, l.h., well centered, v.f., with 2018 PFC for a block of six from which it originated, cat. \$2,750(73) | 1,200.00 |
| 8037 ㊟ | 1861 2c black, used on Sanitary Fair cacheted cover, tied by faint cds, some wear, otherwise fine, cat. \$2,000(73) | 250.00 |
| 8038 ㊟ | 1863 two covers, one addressed to a Prisoner of War (Capt. Corker) at Fort Delaware, Delaware, another from the camp to Baltimore, with oval "Prisoner's Letter / Examined / Fort Delaware, Del.", faults, fine appearance(73) | 250.00 |

1867 Grill Issue



| | | |
|----------|--|----------|
| 8039 ★ | 1867 5c brown, F.Grill, l.h., well centered for this issue, fresh and v.f., with 2015 PSE certificate, cat. \$3,250(95) | 2,500.00 |
| 8040 (★) | 1867 12c black, F.Grill, unused without gum, well centered, reperforated at left, v.f. appearance, with 1987 PFC (catalogued as unused without gum) cat. \$1,000(97) | 250.00 |
| 8041 ○ | 1867 90c blue, F.Grill, used, well centered for this, v.f., with 1989 PFC, cat. \$2,250(101) | 1,000.00 |

1875 Re-Issue of the 1861-66 Issue

| | | |
|----------|--|--------|
| 8042 (★) | 1875 5c brown, unused (regummed), well centered, fresh and v.f., only 672 sold, with 2019 PSE certificate (catalogued as unused without gum) cat. \$1,150(105) | 900.00 |
|----------|--|--------|



| | | |
|----------|--|----------|
| 8043 ★ | 1875 12c black, h.r., wide margins, nice color, fine, only 389 sold, with 1976 PFC, cat. \$3,500 (107) | 2,000.00 |
| 8044 (★) | 1875 90c blue, unused without gum, well centered, beautiful color, reperforated on three sides, v.f. appearance, only 317 sold, with 2004 PSE certificate (catalogued as unused without gum) cat. \$3,500(111) | 1,500.00 |

1869 Pictorials

| | | |
|--------|---|--------|
| 8045 P | 1869 1c-90c, complete set of plate proofs on india, margins all around, few faint thins, also Officials (Dept of Justice), two sets of plate proofs on card, one with some minor staining, otherwise fine-v.f., cat. \$1,055(112-122P3, O25-34P4) | 250.00 |
| 8046 E | 1869 1c buff and 1c orange brown, imperf. plate essay on stamp paper, also 1c buff, perforated plate essay on stamp paper, h.r., fine-v.f., cat. \$300(112-E4b,c) | 100.00 |
| 8047 田 | 1869 1c buff, perforated plate essay, block of four, left stamps without grill, right stamps grilled, h.r., fine-v.f., cat. \$420(112-E4c,d) | 150.00 |
| 8048 田 | 1869 1c chocolate, perforated plate essay with grill, left margin block of four, h.r., fine, cat. \$340(112-E4d) | 100.00 |
| 8049 E | 1869 3c plate essays on stamp paper, two imperf. and six perforated and grilled, all in different colors, l.h. or h.r., fine-v.f., cat. \$650(114-E6b.d) | 200.00 |

| | | |
|---------|---|--------|
| 8050 E田 | 1869 3c orange, perforated plate essay on stamp paper, with grill, corner margin block of twelve, n.h. (middle right stamp with some slight gum disturbance), some minor oxidation, fine-v.f. and attractive multiple, cat. \$960.....(114-E6d) | 300.00 |
| 8051 E田 | 1869 Washington 5c buff, plate essay on wove paper, block of four, small h.r., v.f., cat. \$320(115-E2c) | 100.00 |
| 8052 E | 1869 Washington 5c imperf. Plate essay on wove paper, three different in buff, red brown and green, also two perforated in orange and blue, l.h. or h.r., fine-v.f., cat. \$640(115-E2c,d) | 200.00 |
| 8053 E | 1869 10c Lincoln, imperf. plate essays on stamp paper, three different, in ultramarine, green and blue, l.h. or h.r., fine-v.f., cat. \$400(116-E1k) | 150.00 |
| 8054 E | 1869 Lincoln, 10c orange, die essay on proof paper (removed from card blotter), fine and quite rare, cat. \$1,000.....(116-E1d) | 250.00 |
| 8055 E田 | 1869 12c brown, perforated essay on stamp paper, block of four, hinged, fine (catalogued as singles) cat. \$500(117-E2e) | 150.00 |
| 8056 E | 1869 30c Surrender of Burgoyne, die essay on clear white bond in blue, 30x35mm (all examples are approximately this size), v.f.(121-E1i) | 300.00 |
| 8057 E | 1869 30c Surrender of Burgoyne, die essay on clear white bond in red brown, 30x35mm (all examples are approximately this size), v.f.(121-E1i) | 300.00 |
| 8058 E | 1869 30c Surrender of Burgoyne, plate essay on thin surface-tinted paper, eight different colors, fine-v.f., cat. \$2,000(121-E1p) | 650.00 |
| 8059 E田 | 1869 30c Surrender of Burgoyne, plate essay on india in black, bottom margin block of four, v.f., cat. \$1,200.....(121-E1q) | 350.00 |
| 8060 E | 1869 30c Surrender of Burgoyne, plate essay on bond paper in dull red violet, with red bands overprinted at top and bottom, vertical pair, v.f., cat. \$700(121-E1s) | 200.00 |
| 8061 E | 1869 Washington, 90c plate essay with black vignette on stamp paper, three different, v.f., cat. \$825.....(122-E2b) | 250.00 |
| 8062 ○ | 1869 selection of 11 used stamps, with 2c, 3c (3), 10c (2), 24c (2), 30c (2) and 90c, 2c with revenue cancel, both 10c with Japanese cancels and one 24c with star cancel, usual small faults, fine-v.f. appearance(113/122) | 750.00 |
| 8063 ㊟ | 1869 2c brown, 3c ultramarine and 10c yellow, tied by three strikes of black Bee fancy cancels on cover to France, with Nov 23 New York and "Insufficiently Paid" handstamps, charged "16" (decimes), with French entry and Nice, 6 Dec 1869 arrival pmk on back, fine(113,115,116) | 500.00 |
| 8064 ★ | 1869 12c green, h.r., bright color, fresh and fine, with 2019 William T. Crowe certificate, cat. \$1,850(117) | 300.00 |
| 8065 ○ | 1869 15c brown and blue, type I, black cork cancel, fresh and fine, with 2019 William T. Crowe certificate, cat. \$800.....(118) | 200.00 |



| | | |
|--------|---|-----------|
| 8066 ○ | 1869 24c green & violet, Center Inverted, deep rich colors and detailed impressions, bright paper, rosette cancel leaves vignette clearly visible, well centered and fresh, Signed HFC (Colman), with a tiny trivial corner crease at bottom right, not mentioned on absolutely clear 2011 and 2018 PSE certificates. A v.f. example of this rare invert, with the majority of copies having some degree of faults, not to mention poor centering. Siegel census contains four unused, 83 used singles, one used pair, one on cover and the unique block of four, for a total of 94 copies of the perforated 24c Invert. Of these, only five qualify as "centered" and of these four are either reperforated or have margins added. This stamp, ex-Seymour and Ishikawa is sound and well centered, ex-Seymour and Ishikawa (Scott catalogue value is for "fine centered examples with only minimal faults) cat. \$37,500(120b) | 30,000.00 |
| 8067 ○ | 1869 30c ultramarine and carmine, rosette cancel, well centered, with 2015 PFC graded "VF-XF 85" (SMQ \$900)(121) | 500.00 |

1875 Re-Issue of the 1869 Pictorials



| | | |
|----------|--|----------|
| 8068 ★ | 1869 3c blue, h.r., fresh color, fine, with 2000 PFC, only 1,406 sold, cat. \$5,000.....(125) | 3,000.00 |
| 8069 (★) | 1875 6c blue, unused without gum, fresh color, fine, with 2018 PFC, only 1,226 sold (catalogued as unused without gum) cat. \$800.....(126) | 350.00 |
| 8070 ○ | 1875 6c blue, used, nicely centered, tiny corner perf. crease, otherwise v.f. and rare used stamp, with 2018 PFC, only 2,226 sold, cat. \$3,000.....(126) | 850.00 |
| 8071 (★) | 1875 12c green, unused without gum, well centered, fresh color, v.f., with 2018 PFC, only 1,584 sold (catalogued as unused without gum) cat. \$900.....(128) | 850.00 |



| | | |
|--------|---|---------|
| 8072 ○ | 1875 30c ultramarine and carmine, used, near perfect centering, fresh colors, with 2018 PFC graded "XF 90" (SMQ \$5,750), only 1,535 sold.....(131) | 5,000.0 |
|--------|---|---------|



| | | |
|----------|---|-----------|
| 8073 ★ | 1875 90c carmine and black, h.r., well centered with wide margins, beautiful color, with 2005 PSE certificate graded "XF-Sup 95" (SMQ \$12,500), only 1,356 sold.....(132) | 10,000.00 |
| 8074 (★) | 1875 90c carmine and black, unused without gum, well centered, with 2020 PSAG certificate graded "80" (SMQ \$1,500), only 1,356 sold (catalogued as unused without gum).....(132) | 1,300.00 |
| 8075 (★) | 1875 1c brown orange, unused without gum as issued, v.f., with 2019 William T. Crowe certificate, cat. \$325.....(133a) | 100.00 |

1870-71 Issue

| | | |
|----------|---|----------|
| 8076 ★ | 1870 30c black, unused part original gum, centered to top, stained with perf. faults (the latter not mentioned on accompanying certificate), fine appearance of this rare unused stamp, signed Bartels, etc., with 1958 PFC, ex Raymond H. Weill, cat. \$20,000.....(143) | 1,500.00 |
| 8077 P田 | 1870 1c ultramarine, plate proof on india, plate block of 14, light stain affecting one stamp, marginal thin, otherwise v.f., cat. \$790.....(145P3) | 300.00 |
| 8078 (★) | 1870 3c green, unused with "Read the New York Ledger" advertisement printed on reverse, fine and unusual item, with 1992 PFC, ex-Wade Saadi.....(147) | 150.00 |

| | | |
|----------|---|--------|
| 8079 ★ | 1870 6c carmine, small h.r., well centered, fresh color, v.f., with 2019 PSE certificate, cat. \$900(148) | 750.00 |
| 8080 (★) | 1870 90c carmine, unused without gum, large margins, bright color, fine, with 2019 William T. Crowe certificate (catalogued as unused without gum) cat. \$1,800.....(155) | 400.00 |

1873 Continental Bank Note Company

| | | |
|--------|--|--------|
| 8081 ★ | 1873 3c green, paper cut with "cogwheel punch" variety, small h.r., fine, with 2019 William T. Crowe certificate, cat. \$290(158var) | 100.00 |
|--------|--|--------|

1879 American Bank Note Company

| | | |
|--------|---|--------|
| 8082 E | 1879 3c black brown, die essay on ivory glazed paper, v.f., cat. \$750.....(184-E11c) | 250.00 |
|--------|---|--------|

1880 Special Printing



| | | |
|----------|--|-----------|
| 8083 (★) | 1880 15c orange, unused without gum as issued, well centered for this difficult issue with intact perforations on all sides, beautiful color, fresh and fine sound example of this rare Special Printing, with 1998 and 2008 PFCs. There are only 37 certified examples and around half of them have faults, cat. \$29,000.....(199) | 20,000.00 |
|----------|--|-----------|

1881-1888 Banknote Issues

| | | |
|---------|---|----------|
| 8084 P | 1881 1c gray blue, large die proof on india, die sunk on card, v.f., cat. \$375(206P1) | 100.00 |
| 8085 ★ | 1882 10c brown, barest trace of a hinge, well centered with jumbo margins, with 2019 PSE certificate graded "XF 90J" (SMQ \$350)(209) | 300.00 |
| 8086 ★★ | 1883 2c red brown, upper left sheet corner margin single with fold-over variety resulting in dramatic perf. shift, n.h., a spectacular item(210) | 300.00 |
| 8087 ○ | 1883 2c red brown, small faults, perfectly struck (sideways) fancy "Skull and Crossbones" cancel of Stoneham, Mass, with 2006 PFC(210) | 250.00 |
| 8088 ○ | 1883 2c red brown, well struck fancy "Skull and Crossbones" cancel of Stoneham, Mass, v.f., with 2000 PFC(210) | 500.00 |
| 8089 ★★ | 1883 4c blue green, n.h., fresh color, fine, with 2018 PFC, cat. \$800(211) | 200.00 |
| 8090 ★★ | 1887 3c vermilion, n.h., well centered, bright color, v.f., with photocopy of a 2018 PFC for a block of ten from which it originated, cat. \$180(214) | 150.00 |
| 8091 ★★ | 1888 30c orange brown, n.h., well centered with wide margins, fresh and v.f., with 2018 PFC, cat. \$900(217) | 1,000.00 |
| 8092 ○ | 1888 90c purple, used, well centered with wide margins, fresh color, with 2018 PFC graded "XF 90" (SMQ \$650)(218) | 350.00 |

1890-93 Issue

| | | |
|------------|--|--------|
| 8093 ★★ | 1890 2c carmine, cap on left "2" variety, right margin single, n.h., fresh and fine, with a photocopy of a 2019 PFC for a block of four from which it originated, cat. \$425(220a) | 200.00 |
| 8094 ★/★★田 | 1890 10c green, block of 25, eight stamps n.h., balance hinged (some reinforcing), lower left stamp thin, otherwise fine-v.f. (catalogued as singles) cat. \$6,520(226) | 500.00 |
| 8095 ★★ | 1890 15c indigo, n.h., well centered, with 2019 PSAG certificate graded "80" (SMQ \$750)(227) | 600.00 |
| 8096 ★ | 1890 90c orange, l.h., nicely centered, fresh color, v.f., with a photocopy of a 2019 PFC for a pair from which it originated, cat. \$450(229) | 300.00 |

1893 Columbian Exposition



| | | |
|---------|--|-----------|
| 8097 ★★ | 1893 4c blue, error of color, n.h., well centered with wide margins, beautiful color and sharp impression, tiny natural gum inclusion mentioned for accuracy only (not mentioned on accompanying certificate), fresh and v.f., with 2019 PSE certificate. One of the few available in never hinged, v.f. condition, cat. \$32,500.....(233a) | 25,000.00 |
| 8098 ★★ | 1893 30c orange brown, n.h., natural gum skips, fresh and well centered, wide margins all around, v.f., cat. \$675(239) | 250.00 |
| 8099 ★★ | 1893 50c slate blue, n.h., fresh and fine, with 2020 PFC for a block of four from which it originated, cat. \$1,250(240) | 400.00 |
| 8100 ○ | 1893 50c slate blue, used, nicely centered, with 2018 PFC graded "XF-VF 80" (SMQ \$260)(240) | 150.00 |



| | | |
|-----------|--|----------|
| 8101 ○ | 1893 50c slate blue, used, well centered with jumbo margins, with 2003 PFC and 2019 PSAG certificate, the latter graded "95J" (SMQ \$1,850)(240) | 1,000.00 |
| 8102 ★(★) | 1893 \$1-\$5 high values, five different, h.r. or unused, nice color, small faults, fine-v.f. appearance(240-245) | 1,500.00 |



| | | |
|---------|---|----------|
| 8103 ★ | 1893 \$1 salmon, l.h., nicely centered, with 2019 PFC graded "VF-XF 85" (SMQ \$1,300)(241) | 1,000.00 |
| 8104 ○ | 1893 \$2 brown red, \$3 yellow green and \$4 crimson rose, used, small faults (last one reperforated, with 1978 PFC), fine-v.f. appearance, cat. \$2,225(242-244) | 600.00 |
| 8105 ★ | 1893 \$2 brown red, h.r., well centered, tiny thin, v.f. appearance, cat. \$1,050(242) | 250.00 |
| 8106 ★★ | 1893 \$2 brown red, n.h., fresh and fine, with 2020 PSAG certificate for a pair from which it originated, cat. \$3,500(242) | 1,000.00 |
| 8107 田 | 1893 \$2 brown red, block of four, used, nicely centered, few blunt perforations on lower left stamp, otherwise v.f., cat. \$5,500(242) | 2,000.00 |

| | | |
|--------|---|----------|
| 8108 ★ | 1893 \$3 yellow green, disturbed original gum, well centered, fresh color, with 2019 PSE certificate graded "VF-XF 85" (SMQ \$1,700)(243) | 1,000.00 |
| 8109 ★ | 1893 \$3 yellow green, l.h., well centered, fresh color, v.f., with 2019 PFC, cat. \$1,350.....(243) | 1,200.00 |



| | | |
|---------|---|----------|
| 8110 ★★ | 1893 \$3 yellow green, left margin single, n.h., well centered, rich color, fresh and v.f., with 2020 PSE certificate, cat. \$4,250.....(243) | 4,500.00 |
| 8111 ★ | 1893 \$4 rose carmine, heavy h.r., nice color, fine, with 2018 PSE certificate, cat. \$2,000(244a) | 1,000.00 |
| 8112 ★ | 1893 \$5 black, h.r., nicely centered, small thin, v.f. appearance, cat. \$2,300(245) | 750.00 |
| 8113 ★ | 1893 \$5 black, disturbed gum, well centered, thin, v.f. appearance, cat. \$2,300(245) | 500.00 |

1894-97 Bureau Issues

| | | |
|---------|--|----------|
| 8114 ☒ | 1894 1c (5), 2c and 5c, affixed on 2c stationery entire envelope by "Kicking Mule" cancels, used Dec. 1 1899 from Fort Townsend, Washington to San Francisco, address obliterated, with arrival pmk, some cover wear and toning, scarce "Kicking Mule" cancel struck 8 (!) times on a single cover | 500.00 |
| 8115 ★★ | 1894 3c purple, n.h., fine, with 2019 William T. Crowe certificate, cat. \$360(253) | 100.00 |
| 8116 ★ | 1894 \$1 black, type II, well centered with jumbo margins, l.h., with 2020 PSE certificate graded "VF-XF 85J" (SMQ \$2,650 for "85" and \$4,000 for "90")(261A) | 2,000.00 |



| | | |
|---------|--|----------|
| 8117 ★★ | 1894 \$1 black, type II, right margin single, n.h., well centered, some creasing in the selvage at right (not affecting the stamp), with 2019 PSAG certificate graded "80" (SMQ \$6,500)(261A) | 4,500.00 |
|---------|--|----------|



| | | |
|--------|---|----------|
| 8118 ★ | 1894 \$2 bright blue, h.r., well centered, fresh color, with 2019 PSE certificate graded "XF 90" (SMQ \$5,250)(262) | 5,000.00 |
| 8119 ★ | 1895 10c dark green, vertical Plate No. imprint strip of three, h.r., fine (catalogued as singles) cat. \$285(273) | 150.00 |
| 8120 ★ | 1895 \$1 black, Type I, h.r., near perfect centering with wide, even margins, fresh color, a great stamp, with 2020 PSAG certificate graded "95" (SMQ \$2,500)(276) | 1,500.00 |

- 8121 ★ 1895 \$2 bright blue, slightly disturbed original gum, well centered with wide, even margins, rich color, with 2020 PSAG certificate graded "90" (SMQ \$1,500)(277) 800.00



- 8122 ★ 1895 \$5 dark green, top margin single, l.h., well centered, fresh color, with 2010 PSE certificate graded "XF 90" (SMQ \$3,500)(278) 3,000.00
- 8123 ★ 1895 \$5 dark green, l.h., well centered, fresh and v.f., with 2019 PFC, cat. \$2,000(278) 1,000.00
- 8124 ○ 1895 \$5 dark green, used, well centered, with 2018 PFC graded "VF-XF 85" (SMQ \$775)(278) 450.00
- 8125 ○ 1895 \$5 dark green, used, nicely centered, with 2019 PSAG certificate graded "90" (SMQ \$1,250)(278) 650.00
- 8126 ★★ 1898 5c dark blue, lower left sheet corner margin single, n.h., well centered, v.f., with 2019 PFC for a strip of four from which it originated, cat. \$100(281) 150.00
- 8127 ★★ 1898 10c brown, type II, top margin plate number single, n.h., fine, with photocopy of a 2017 PFC for a strip of three from which it originated, cat. \$450(283) 350.00

1898 Trans-Mississippi Exposition

- 8128 E 1898 1c-\$2 complete set of large die bicolor essays, die sunk on cards (156x126mm), fresh except 4c with card toning, mostly v.f., attractive set, cat. \$6,550(285E8-293E7) 2,500.00
- 8129 ★ 1898 \$1 black, small h.r., well centered, with 2019 PSAG certificate graded "80" (SMQ \$1,100)(292) 1,200.00
- 8130 ★ 1898 \$1 black, l.h., well centered, fresh and v.f., with 2018 PFC, cat. \$1,500(292) 900.00



- 8131 ★★ 1898 \$1 black, n.h., well centered with wide margins, fresh color, v.f., with 2019 PFC, cat. \$3,750(292) 3,000.00
- 8132 ★ 1898 \$1 black, small h.r., natural straight edge at right, fine, cat. \$1,500(292) 350.00
- 8133 ★ 1898 \$2 orange brown, small h.r., fresh, centered to right, v.g. with 2018 PFC, cat. \$1,900(293) 350.00
- 8134 ○ 1898 \$2 orange brown, very lightly canceled (appears unused), well centered, v.f., with 2004 PFC, cat. \$1,050(293) 750.00

1901 Pan-American Exposition



| | | |
|------------|--|----------|
| 8135 ★ | 1901 1c green and black, center inverted, small h.r., nice color, fresh and fine, with 2017 PSE certificate, cat. \$12,500(294a) | 7,000.00 |
| 8136 ★★ | 1901 4c deep red brown and black, right margin single, n.h., fresh and v.f., with a photocopy of a 2016 PFC for a pair from which it originated, cat. \$170(296) | 200.00 |
| 8137 ★/★★田 | 1901 4c deep red brown and black, left margin block of six, bottom left stamp and selvage l.h., other five stamps n.h., fine-v.f., with 2018 PFC (catalogue value for singles) cat. \$920(296) | 150.00 |



| | | |
|----------|--|----------|
| 8138 S | 1901 4c deep red brown and black, Center Inverted, clear "Specimen" overprint, h.r., small sealed tear, otherwise fine, with 2018 PFC (it has been reported that a total of 203 4c Inverts were released, both with and without the small "Specimen" overprint (it is not known how many were overprinted). Some examples, both with and without the overprint, were given away by Third Asst. Postmaster General Edwin C. Madden. When postal authorities learned of the practice, they destroyed 194 copies and put one pane of 100 into the official archives. At a later date, 97 of these were traded for rarities missing from the archives) cat. \$11,500.....(296aS-E) | 5,000.00 |
| 8139 ★★ | 1901 10c yellow brown and black, n.h., well centered, v.f., with photocopy of a 2018 PFC for a strip of three from which it originated, cat. \$300(299) | 250.00 |
| 8140 ★★ | 1901 10c yellow brown and black, n.h., well centered, with 2016 PFC graded "VF-XF 85" (SMQ \$500)(299) | 350.00 |
| 8141 ★★田 | 1901 10c yellow brown and black, vertical block of ten, n.h., bottom right stamp with short perf. otherwise fine, with 2019 PFC (catalogue value for singles) cat. \$2,400(299) | 350.00 |

1902-08 Issue

| | | |
|----------|---|--------|
| 8142 ★ | 1902 50c orange, l.h., near perfect centering, bright color, a beautiful stamp, with 2019 PSAG certificate graded "95" (SMQ \$1,000)(310) | 600.00 |
| 8143 ★ | 1902 \$2 dark blue, l.h., wide margins, fresh and fine, with 2019 PSE certificate, cat. \$800(312) | 350.00 |
| 8144 ★ | 1902 \$5 dark green, l.h., rich color, fresh and fine, with 2018 PFC, cat. \$2,000(313) | 900.00 |
| 8145 ★★田 | 1906 1c green, 2c scarlet imperf. right imprint and plate no. blocks of six, n.h., v.f., the latter with 2008 PFC, cat. \$675(314,320b) | 150.00 |

1902-08 Coil Stamps

| | | |
|---------|--|--------|
| 8146 ★★ | 1908 5c blue, n.h., large margins all around, fresh color, with 2017 PSE certificate graded "XF-Sup 95" (SMQ \$850)(315) | 600.00 |
| 8147 ★★ | 1908 5c blue, bottom margin part arrow single, n.h., v.f., with 2017 PSAG certificate, cat. \$575(315) | 500.00 |



- 8148 ★ 1908 1c green, left margin single with part imprint, l.h., nice color, fresh and fine, with handstamp guarantee, a rare positional piece, with 2019 PFC, cat. \$4,250.....(318) 3,500.00



- 8149 ★ 1908 2c carmine, type II, l.h., well centered, fresh color, pencil notation on gum, v.f. example of this rare coil, with 2019 PFC, cat. \$7,000(322) 6,000.00

1904 Louisiana-Purchase Exposition

- 8150 ★★ 1904 1c green, n.h., well centered, beautiful color, fresh and v.f., with photocopy of 2019 PFC for a block of nine from which it originated, cat. \$60(323) 100.00
- 8151 ★★ 1904 10c red brown, right sheet margin single, n.h., well centered, fresh and v.f., with a photocopy of a 2017 PFC for a pair from which it originated, cat. \$300.....(327) 300.00

1907 Jamestown Exposition

- 8152 ★★ 1907 5c blue, n.h., well centered, v.f., with 1992 and 2018 PFCs, cat. \$350(330) 300.00

1908-09 Issues

- 8153 ★/★★田 1908 5c blue, bottom margin block of four with plate number, top left stamp h.r., other three stamps n.h., well centered, fresh color, v.f., with 2018 PFC (catalogued as singles) cat. \$375(335) 300.00
- 8154 ★★ 1908 15c pale ultramarine, n.h., well centered, fresh and v.f., with a photocopy of a 2019 PFC for a block of six from which it originated, cat. \$150(340) 200.00
- 8155 ★★ 1908 50c violet, n.h., rich color, v.f., with 2006 PFC, cat. \$650.....(341) 400.00



- 8156 ★田 1908 50c violet, top margin plate block of six, barest trace of a hinge (appears n.h.), well centered, fresh color, v.f., with 2007 PFC, cat. \$6,000(341) 4,500.00
- 8157 ★田 1908 imperforate 4c and 5c left imprint, plate no. blocks of six, the former with Star, h.r., v.f., cat. \$485(346,347) 100.00

| | | |
|---------|--|----------|
| 8158 ★ | 1908 1c green, vertical guide line pair, top stamp l.h., bottom stamp n.h., well centered, with 2009 PSE certificate graded "XF 90" (SMQ \$475)(348) | 300.00 |
| 8159 ★★ | 1908 1c green, vertical pair, n.h., well centered with wide margins, beautiful color, with 2002 PFC and 2008 PSE certificate, the latter graded "XF-Sup 95" (SMQ \$650)(348) | 400.00 |
| 8160 ★★ | 1909 1c green, horizontal guide line pair, n.h., with 2019 PSAG certificate graded "75" (SMQ \$1,250)(352) | 1,500.00 |



| | | |
|---------|---|----------|
| 8161 ★ | 1909 4c orange brown, horizontal guide line pair, l.h., well centered with wide margins, fresh color, with 2019 PSAG certificate graded "95" (SMQ \$3,250)(354) | 2,500.00 |
| 8162 ★★ | 1908 5c blue, horizontal guide line pair, n.h., fresh color, v.f., with 1997 and 2019 PFCs for a strip of four from which it originated, cat. \$3,250(355) | 1,800.00 |
| 8163 ★ | 1909 5c blue, horizontal guide line pair, l.h., horizontal crease, otherwise fine, with 2019 William T. Crowe certificate, cat. \$1,500(355) | 200.00 |



| | | |
|--------|--|----------|
| 8164 ★ | 1909 5c blue, horizontal guide line pair, l.h., well centered with wide margins, fresh color, with 1994 PFC and 2019 PSAG certificate graded "95" (SMQ for "90" \$2,350, unpriced in the grade of "95")(355) | 2,500.00 |
|--------|--|----------|

1909 Bluish Paper

| | | |
|---------|---|----------|
| 8165 ★★ | 1909 3c deep violet, right margin part imprint single, hinged in selvage, stamp n.h., fresh color, fine, with Stanley Gibbons handstamp and 2018 PFC, cat. \$4,000(359) | 1,500.00 |
|---------|---|----------|



| | | |
|--------|---|----------|
| 8166 ○ | 1909 13c blue green, lightly cancelled, wide margins, nice color, fresh and fine example of this scarce used Bluish Paper, with 1992 PFC for a block of four from which it originated, cat. \$4,000(365) | 2,000.00 |
|--------|---|----------|

1909-13 Issues

| | | |
|----------|--|--------|
| 8167 ★★田 | 1909 Seward, imperf. bottom plate no. block of six, l.h., also Hudson-Fulton top perf. and left imperf. plate no. blocks of six, first with few opened perfs, n.h., fine-v.f., cat. \$1,025(371,372,372) | 250.00 |
|----------|--|--------|

| | | |
|--------|--|--------|
| 8168 ○ | 1910 2c carmine, used, perfectly centered with jumbo margins, fresh color, with 2011 PFC and 2007 PSE certificate, the latter graded "Gem 100J" (SMQ \$325 for "100")(375) | 250.00 |
| 8169 ★ | 1910 1c green, horizontal guide line pair, h.r., fine, with 2019 William T. Crowe certificate, cat. \$1,250.....(387) | 250.00 |



| | | |
|--------|--|-----------|
| 8170 ○ | 1911 3c deep violet, Type I, Orangeburg coil single, perf. 12 vertically, machine cancel as always, usual centering (actually quite nice for this stamp), with 2018 PSE certificate (The 3c Orangeburg coil was made by the Post Office Department in 1911, specifically for use by the Bell Pharmaceutical Company. They were used to send product samples to physicians and were put through the first-class cancelling machine at Orangeburg, New York. Due to the coil stamps' use on mass mailings, many of the surviving copies are faulty to some extent. The most common defects are corner creases or tears). A rare sound example, cat. \$10,000.....(389) | 10,000.00 |
| 8171 ○ | 1913 5c blue, horizontal guide line pair, used, left stamp well centered, fine-v.f. and scarce used pair, with 1994 PFC and 2019 PSE certificate, cat. \$825.....(396) | 250.00 |

1913-15 Panama-Pacific Exposition

| | | |
|---------|---|--------|
| 8172 ★田 | 1913 10c orange, right margin plate block of six, l.h., fresh color, fine-v.f., with 2016 PSAG certificate, cat. \$2,250(400) | 800.00 |
| 8173 ★ | 1915 10c orange, l.h., wide margins, fresh color, v.f., with 1984 and 2019 PFCs, cat. \$650.....(404) | 500.00 |
| 8174 ★ | 1915 10c orange, l.h., well centered, with 2019 PSE certificate graded "VF-XF 85" (SMQ \$775)(404) | 600.00 |

1914-17 Issues

| | | |
|---------|---|----------|
| 8175 ★★ | 1914 15c gray, n.h., well centered with wide margins, with 2019 PSAG certificate (for a pair from which it originated) graded "90" (SMQ \$350)(418) | 300.00 |
| 8176 ★ | 1914 50c violet, l.h., with photocopy of a 2017 PSE certificate for a block of four from which it originated, graded "VF 80" (SMQ \$225)(422) | 150.00 |
| 8177 ★★ | 1914 50c violet, n.h., wide margins, fresh and v.f., with 2020 PFC, cat. \$475(422) | 350.00 |
| 8178 ★★ | 1914 \$1 violet brown, n.h., nicely centered, with 2019 PSAG certificate graded "85" (SMQ \$1,500)(423) | 1,000.00 |



| | | |
|--------|---|----------|
| 8179 ○ | 1914 1c green, compound perf. 12x10, "Quincy, Illinois" precancel, well centered for this with the design clear of the perforations on all sides, v.f. and rare sound copy, with 1962 and 2008 PFCs and 2019 PSE certificate. According to Scott, only 18 unused and 52 used copies are recorded (mostly precanceled "Chicago" and only a few precanceled "Quincy") and the catalogue price is for fine-v.f., cat. \$5,500.....(423A) | 4,000.00 |
|--------|---|----------|



- 8180 ○ 1914 5c blue, compound perf. 12x10, used, well centered, fresh color, a v.f. example of this rarity (formerly Scott 428a), with 1976 and 2001 PFCs and 2019 PSE certificate, ex-Hoffman (2008 RAS sale, where it sold for \$30,000 plus buyer's premium). Only 24 used copies of this compound perforation have been recorded, most of them either faulty or with perforations in on at least one side of the design, catalogue value is for "fine-v.f.", cat. \$16,000(423C) 16,000.00



- 8181 ○ 1914 1c green, compound perf. 10x12, Dayton, Ohio precancel, well centered, fresh color, v.f., with 2001 PFC and 2019 PSE certificate. Only 56 examples recorded (all used) and the catalogue value is for "fine-v.f.", cat. \$9,000(423D) 8,500.00
- 8182 ★★ 1914 4c brown, n.h., well centered, with 2019 PFC graded "VF-XF 85" (SMQ \$115)(427) 100.00
- 8183 ★★ 1914 4c brown, n.h., well centered with wide margins, fresh color, with 2019 PSE certificate graded "XF 90" (SMQ \$225)(427) 200.00
- 8184 ★ 1914 15c gray, right plate number single, l.h., well centered, v.f., with a photocopy of a 2019 PSE certificate for a block of six from which it originated, cat. \$110(437) 200.00



- 8185 ★★ 1914 50c violet, n.h., well centered, fresh color with 2006 PSE certificate graded "XF 90" (SMQ \$1,850)(440) 1,500.00
- 8186 ★ 1914 2c carmine, horizontal guide line pair, h.r., well centered, fresh and v.f., with 2018 PFC, cat. \$300(444) 250.00
- 8187 ★★ 1915 2c carmine, type III, vertical joint line pair, n.h., well centered, fresh and v.f., with 2018 PFC, cat. \$550(450) 350.00
- 8188 ★★ 1915 2c carmine rose, type I, horizontal pair, n.h., fresh color, light pencil notation on gum, fine, with 2004 APS certificate, cat. \$625(453) 200.00
- 8189 ★★ 1915 2c red, horizontal pair, well centered with jumbo margins, beautiful color, with 2019 PSE certificate graded "XF-Sup 95J" (SMQ \$1,500)(454) 1,000.00
- 8190 ★★ 1915 2c carmine, imperf. horizontal pair, n.h., large margins all around, with 2013 PSE certificate graded "VF 80" (SMQ \$600)(459) 400.00



| | | |
|----------|---|-----------|
| 8191 ★★田 | 1915 \$1 violet black, top margin plate number block of six, n.h., well centered, fresh color, v.f., one of only twelve known plate blocks (six top, six bottom), only a few are n.h., a major plate block rarity, with 2017 PSE certificate, cat. \$17,000.....(460) | 12,500.00 |
| 8192 ★★ | 1915 2c pale carmine red, n.h., well centered with wide margins, fresh and v.f., with a photocopy of a 2009 PFC for a block of 20 from which it originated, cat. \$325(461) | 300.00 |
| 8193 ★★ | 1915 2c pale carmine red, n.h., top margin single, fresh and v.f., with a photocopy of a 2009 PFC for a block of 20 from which it originated, cat. \$325(461) | 250.00 |
| 8194 ★★ | 1916 5c blue, bottom margin single, n.h., well centered, graded "XF 90", with photocopy of a 2018 PSE certificate for a strip of three from which it originated (SMQ \$400)(466) | 200.00 |
| 8195 ★★田 | 1916 5c carmine, double error in 2c block of twelve, with parts of adjoining stamps on three sides, n.h., well centered, v.f., with 2018 PFC, cat. \$2,900(467) | 1,800.00 |
| 8196 ★★ | 1916 15c gray, n.h., v.f., with 2019 Crowe certificate, cat. \$375(475) | 100.00 |
| 8197 ★★ | 1916 \$1 violet black, left margin single, n.h., fine, with 2020 PFC for a block of four from which it originated, cat. \$1,400(478) | 650.00 |
| 8198 ○ | 1917 \$2 dark blue, used, perfectly centered with wide margins, certainly among the finest used copies, with 2019 PSAG certificate graded "98" (SMQ \$1,000)(479) | 500.00 |

1917-29 Issues

| | | |
|---------|--|----------|
| 8199 ★田 | 1917 \$5 light green, bottom margin plate block of six, top middle stamp hinged, others n.h., nice color, fine-v.f., cat. \$3,000(480) | 1,500.00 |
|---------|--|----------|



| | | |
|---------|---|-----------|
| 8200 ○ | 1917 2c deep rose, Ty. 1a, Imperforate, with Schermack perfs clearly visible at left, neat wavy lines machine cancel, characteristic rich color, faint corner crease at top left, fine example of this rarity, of which only 40 (!) copies recorded (Scott 482A was issued imperforate by the Bureau of Engraving and Printing and sold to the Schermack Company for use in its patented stamp affixing machines, which typically applied stamps one at a time, so in most cases, the hyphen-hole perfs on one side would be cut off. Most surviving examples are either cut well into the design or have the Schermack perfs trimmed away on one side). An important 20th Century U.S. rarity, with 1977 and 2017 PFCs, cat. \$65,000.....(482A) | 12,500.00 |
| 8201 ★★ | 1917 10c orange yellow, horizontal guide line pair, n.h., well centered, with 2018 PFC graded "XF 90" (SMQ \$350)(497) | 300.00 |
| 8202 ○ | 1917 1c green, used, perfectly centered with jumbo margins, nice color, with 2007 PSE certificate graded "Gem 100J" (SMQ \$450 for "100")(498) | 300.00 |

| | | |
|----------|--|----------|
| 8203 ○ | 1917 1c green, used, well centered with jumbo margins, nice color, with 2008 PSE certificate graded "Gem 98J" (SMQ \$250)(498) | 100.00 |
| 8204 ★★田 | 1917 5c rose, double error in 2c block of twelve, n.h., natural straight edge at bottom, well centered, with 2018 PFC graded "VF 80", cat. \$1,850.....(505) | 850.00 |
| 8205 ★★ | 1917 30c orange red, n.h., near perfect centering, beautiful color, with 2005 PFC and 2008 PSE certificate, the latter graded "XF Sup 95" (SMQ \$475)(516) | 250.00 |
| 8206 ★★田 | 1917 30c orange red, block of four, n.h. and post office fresh, couple of tiny natural dried spots at left, v.f.(516) | 100.00 |
| 8207 ★★ | 1917 2c carmine, n.h., fresh color, fine, with 1992 and 2018 PFCs, cat. \$900.....(519) | 400.00 |
| 8208 ○ | 1917 2c carmine, lightly cancelled, nicely centered, with 1996 PSE certificate and 2019 PFC graded "VF 80" (SMQ \$1,750)(519) | 1,500.00 |
| 8209 ★★田 | 1918 1c green and 2c carmine rose, bottom and top plate no. blocks of six, n.h., some gum wrinkling and spots, still v.f., cat. \$560(531,534) | 100.00 |
| 8210 ★★ | 1919 \$5 deep green and black, n.h., well centered with wide margins, beautiful color, with 2020 PSAG certificate graded "98" (SMQ \$2,650)(524) | 1,500.00 |
| 8211 ★★ | 1920 2c carmine rose, n.h., jumbo margins with parts of adjoining stamps on all sides, fresh color, with 2017 PFC graded "Gem 100J" (SMQ \$400 for "100")(532) | 250.00 |
| 8212 ★ | 1920 2c carmine, type VII, bottom margin single, l.h., large margins, fresh color, with 2015 PSE certificate graded "XF-Sup 95" (SMQ \$2,350)(534B) | 2,000.00 |



| | | |
|----------|---|----------|
| 8213 ★★ | 1920 2c carmine, type VII, n.h., large margins all around, fresh color, v.f., with 1988 PFC for a pair from which this came and 2019 PSE certificate graded "XF 90" (SMQ \$3,750)(534B) | 3,000.00 |
| 8214 ○ | 1923 1c green, Rotary, perf. 11, used, usual centering, nice color, fine, with 1987 PFC (catalogue value for fine) cat. \$3,500(544) | 1,200.00 |
| 8215 ○ | 1923 1c green, Rotary, perf. 11, used, well centered for this difficult issue with the design clear of the perforations on all sides, light diagonal crease, otherwise v.f., with 1991 PFC (catalogue value for fine) cat. \$3,500(544) | 2,000.00 |
| 8216 ★★ | 1920 \$2 carmine and black, n.h., well centered, v.f., with photocopy of 2016 PFC for a block of four from which it originated, cat. \$240(547) | 250.00 |
| 8217 ★★ | 1920 \$2 carmine and black, n.h., well centered, v.f., with a photocopy of a 2018 PFC for a block of four from which it originated, cat. \$240(547) | 150.00 |
| 8218 ○ | 1920 \$2 carmine and black, used, well centered with jumbo margins, with 2019 PSE certificate graded "XF-Sup 95J" (SMQ \$200 for "95" and "475" for "98", unpriced as "95J")(547) | 350.00 |
| 8219 ★★ | 1920 5c deep blue, corner margin single with sideographer's initials, well centered, bright color, with 2007 PSE graded "XF-Sup 95" (SMQ \$500)(550) | 300.00 |
| 8220 P | 1922 5c dark blue, large die proof, die sunk on card, signed by the Postmaster General (Hubert Work), serial number (1176107) on back, v.f., rare, cat. \$1,000(557P1) | 750.00 |
| 8221 P | 1922 20c carmine rose, large die proof, die sunk on card, signed by the Postmaster General (Harry S Neu), serial number (1211988) on back, h.r., v.f., rare, cat. \$1,000(567P1) | 750.00 |
| 8222 P | 1922 \$1 violet brown, large die proof removed from card and trimmed, fine, cat. \$1,500.....(571P1) | 300.00 |
| 8223 ★★田 | 1923 \$5 carmine & blue, center-line block of four, n.h., natural gum crease at top left, fresh, fine-v.f., with 2015 PSE certificate, cat. \$825(573) | 300.00 |
| 8224 田 | 1923 \$5 carmine lake and dark blue, block of six, boxed Chicago cancels, well centered, fresh color, v.f., with 2019 PFC, cat. \$235(573a) | 150.00 |
| 8225 ★★田 | 1923 1c-10c, complete set in blocks of four, n.h., fine-v.f. (catalogued as singles) cat. \$1,485.....(581-591) | 300.00 |

- 8226 ★田 1923 Perf.10, 1c-10c Plate No. Blocks of four, complete set, l.h. or h.r., few n.h., usual centering, mostly fine or better, cat. \$3,080(581-91) 400.00



- 8227 ★ 1923 Rotary perf. 11, 1c green, part original gum, usual centering, tiny thin spot, otherwise fine, one of only eight (!) known with original gum, with 1971 and 2008 PFCs. One of the rarest 20th Century United States stamps in unused condition (the 1c green, Scott 594, is waste from a horizontal rotary printing used to make coils. At the beginning or end of a coil-stamp print run from the 170-subject rotary plates, some leading or trailing paper was produced that was too short for rolling into 500-stamp rolls. In 1919 the Bureau devised a plan to salvage this waste by perforating and cutting the sheets into panes. They were put through the 11-gauge flat-plate perforator in use at the time, giving the sheets full perforations on all sides. The existence of Scott 594 was not reported until four months after the final sheets were delivered, and the 1c Rotary perf. 11 was soon recognized as one of the rarest United States stamps) cat. \$65,000(594) 18,000.00



- 8228 ○ 1923 Rotary perf. 11, 1c green, used, well centered with design clear of the perforations on all sides, fresh color, small repair at upper left, otherwise v.f., seldom seen in such condition, with 2019 PSE certificate (catalogue value is for a stamp with perforations touching the frameline on one side) cat. \$10,500 (594) 5,000.00
- 8229 ★田 1923 2c carmine, top Plate No. 14131 and 14732 block of four, each with star, l.h., some gum skips, usual centering, rare, cat. \$4,200(595) 400.00
- 8230 匣 1925 Norse-American, seven different FDCs, each with set of two, addressed to Phillip Ward, fine-v.f., cat. \$350(620-21) 100.00
- 8231 P 1926 2c Liberty Bell, small die proof on india paper, large margins all around, fresh and v.f., rare, cat. \$1,500(627P2) 1,000.00
- 8232 ★★ 1926 2c carmine lake, n.h., well centered, fresh and v.f., with 2019 PSE certificate for a pair from which it originated, cat. \$425(634b) 300.00
- 8233 P 1927 2c Valley Forge, small die proof on india paper, large margins all around, fresh and v.f., extremely rare, cat. \$1,500(645P2) 1,000.00
- 8234 P 1927 5c Aeronautics, large die proof, die sunk on card, signed by the Postmaster General (Harry S. Neu), serial number (146710) on back, faint ageing, otherwise v.f., extremely rare, cat. \$1,500(649P1) 1,000.00
- 8235 ★/★★田 1929 Kansas-Nebraska, complete sets in blocks of four, each with two stamps hinged, two n.h., fine-v.f., cat. \$2,881(658-679) 600.00

1930-79 Issues

- 8236 P 1930 2c Von Steuben, small die proof on india paper, large margins all around, fresh and v.f., rare, cat. \$1,500(689P2) 1,000.00

| | | |
|---------|---|----------|
| 8237 ★★ | 1939 Presidential Coils, 1c-10c complete rolls of 500, generally unopened with intact wrappers, also additional coil roll of 500 of 4 ½c (1059), n.h., fine-v.f., scarce holding, cat. \$16,000(843-47) | 1,500.00 |
|---------|---|----------|

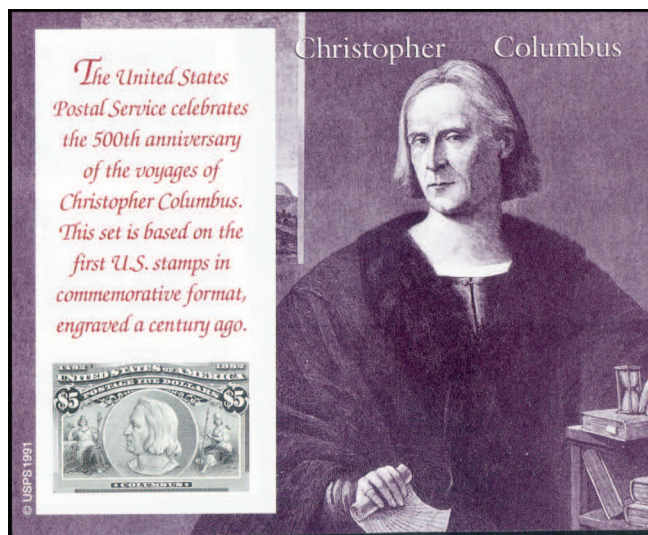
United States Modern Issues

| | | |
|---------|--|--------|
| 8238 ★★ | 1960 4c Boy Scouts of America, two misperforated varieties, n.h., v.f.(1145var) | 100.00 |
|---------|--|--------|



| | | |
|----------|--|-----------|
| 8239 ★★ | 1979 \$1.00 Rush Lamp & Candle Holder, intaglio brown color inverted, n.h., v.f. The so-called CIA invert is one of the best known inverted color errors in United States philately. These stamps were discovered by an on-duty CIA employee who teamed up with some colleagues to purchase the pane from a post office. Saving a copy each, the group later sold the bulk of the sheet to a prominent stamp dealer. News of the error reached CIA officials who sought to claim ownership, and US Postal authorities tried to recover the stamps. Official queries, threats, and even job losses followed the group until the sale of the pane was ruled legal. Only about 80-85 copies are accounted for, cat. \$17,500(1610c) | 12,500.00 |
| 8240 P田 | 1979 John Paul Jones, 15c finished design, imperforate bottom sheet margin Plate Number block of 10, n.h., v.f.(1789Pg) | 250.00 |
| 8241 ★★田 | 1989 Ernest Hemingway, imperforate upper left sheet corner margin Plate No. block of four, n.h., minor natural gum wrinkles and light fingerprints, still v.f. (catalogued as imperf. singles) cat. \$4,000(2418P) | 1,000.00 |
| 8242 ★★田 | 1989 Ernest Hemingway, imperforate vertical gutter block of four, n.h., folded horizontally in gutter between stamps, minor natural gum wrinkles and light fingerprints, still v.f. (catalogued as imperf. singles) cat. \$4,000(2418P) | 1,000.00 |
| 8243 ★★田 | 1991 01c and 03c Birds, imperforate vertical gutter blocks of four, n.h., paper wrinkles, otherwise v.f., cat. \$700(2476P, 2678P) | 250.00 |
| 8244 ★★田 | 1991 01c and 03c Birds, perforated cross gutter blocks of 16, n.h., folded horizontally between stamps, n.h., v.f., extremely rare(2476P, 2678Pa) | 500.00 |
| 8245 ★★ | 1991 01c and 03c Birds, imperforate horizontal gutter se-tenant strip of four, folded between stamps, n.h., v.f., undoubtedly very rare(2476P, 2678Pa) | 300.00 |
| 8246 ★★ | 1991 Olympics, imperforate se-tenant strip of five, n.h., right stamp (swimmer) creased, otherwise v.f., cat. \$1,500(2500aP) | 500.00 |
| 8247 ★★ | 1991 Olympics, imperforate cross-gutter pane of eight (!) se-tenant strips of five, showing color chart and Olympic Emblems at both sides, n.h., vertical fold through four stamps at left (25c Swimmer), also horizontally in gutter between stamps, otherwise v.f. A unique and spectacular piece (catalogued as eight imperforate strips of five) cat. \$12,000(2500aP) | 3,000.00 |
| 8248 ★★田 | 1991 Eisenhower, 25c imperforate left sheet margin inscription & imprint block of eight, n.h., v.f. (catalogued as four pairs) cat. \$3,500(2513P) | 1,000.00 |
| 8249 ★★ | 1991 "F" stamp, perforated horizontal and vertical gutter pairs, folded between stamps, n.h., v.f.(2517var) | 150.00 |
| 8250 ★★ | 1991 \$2.90 Eagle, nine imperforate gutter pairs, different progressive stages, including finished design, n.h., v.f., cat. \$3,150(2540Pa-I) | 1,000.00 |
| 8251 ★★ | 1991 \$2.90 Eagle perforated vertical gutter pair, n.h., v.f.(2540PI) | 250.00 |
| 8252 ★★ | 1991 \$2.90 Eagle perforated horizontal gutter pair (with plate markings), n.h., v.f.(2540PI) | 250.00 |
| 8253 ★★ | 1991 \$2.90 Eagle perforated cross-gutter block of four (with plate markings), n.h., v.f., rare(2540PI) | 500.00 |
| 8254 田 | 1992 Eagle & Shield, 29c imperf. (die cutting omitted), booklet pane of 17, n.h., v.f., cat. \$725(2595d) | 250.00 |

| | | |
|----------|---|--------|
| 8255 ★★田 | 1991 23c Flag, Presorted First Class, top sheet margin block of four imperf. horizontally, n.h., v.f., cat. \$500.....(2605P) | 150.00 |
|----------|---|--------|



| | | |
|----------|---|----------|
| 8256 ★★ | 1992 Columbian Exposition, complete set of six imperforate souvenir sheets, n.h., v.f., cat. \$4,500(2624P-29P) | 1,500.00 |
| 8257 ★★田 | 1992 Hummingbirds, eight imperforate booklet panes of five, progressive stages, n.h., two miscut at right, otherwise v.f., cat. \$3,600(2646aPb-I) | 1,000.00 |
| 8258 ★★田 | 1992 Christmas Toys, imperforate block of four, n.h., v.f.(2718aP) | 250.00 |
| 8259 ★★田 | 1992 Christmas Toys, 29c block of four imperf. horizontally and at right, n.h., v.f.(2718aP) | 250.00 |
| 8260 ★★田 | 1992 Christmas Toys, value and inscriptions omitted, imperforate se-tenant block of four, cat. \$1,200.....(2718aPb) | 500.00 |
| 8261 ★★田 | 1992 Christmas Toys, 29c imperforate block of four, green denominations omitted, n.h., v.f., cat. \$1,200.....(2718aPg) | 500.00 |
| 8262 ★★ | 1993 American Music (Otis Redding, Buddy Holly, Dinah Washington and Elvis Presley), top sheet margin imperforate booklet pane of four, n.h., v.f. (listed but unpriced)(2737aP) | 500.00 |
| 8263 ★★田 | 1993 American Music (Otis Redding, Buddy Holly, Dinah Washington and Elvis Presley, top sheet margin uncut pair of panes of four imperforate vertically, n.h., v.f. (listed but unpriced)(2737aP) | 1,000.00 |
| 8264 ★★田 | 1993 American Music (Elvis Presley, Bill Haley, Clyde McPhatter, Ritchie Valens, Otis Redding, Buddy Holly, Dinah Washington, Elvis Presley), top sheet margin pair of booklet panes of eight, imperf. vertically, n.h., v.f. (listed but unpriced)(2737aP) | 1,500.00 |
| 8265 ★★ | 1993 Cherokee Strip Land Run, 29c imperforate horizontal gutter pair, n.h., folded between stamps, v.f., cat. \$400.....(2754P) | 150.00 |
| 8266 ★★ | 1993 Cherokee Strip Land Run, 29c imperforate vertical gutter strip of four, n.h., v.f., cat. \$800(2754P) | 250.00 |
| 8267 ★★田 | 1993 Cherokee Strip Land Run, 29c imperforate cross gutter block of four, with plate markings, n.h., folded between stamps, v.f., probably unique, cat. \$1,500(2754P) | 500.00 |
| 8268 ★★ | 1993 Cherokee Strip Land Run, 29c perforated horizontal and vertical gutter pairs, n.h., v.f., cat. \$500(2754Pa) | 150.00 |
| 8269 ★★ | 1993 Cherokee Strip Land Run, 29c purple and black inscriptions omitted, imperforate horizontal and vertical gutter pairs, folded between stamps, n.h., v.f., listed but unpriced(2754Pb) | 500.00 |
| 8270 ★★田 | 1993 American Music (Show Boat, Porgy & Bess, Oklahoma and My Fair Lady), 29c imperforate uncut pairs of booklet pane of four, finished design, also two uncut stage proof pairs of panes of four in blue and ultramarine only (catalogue value for the finished pane only) cat. \$2,500.....(2770aP,b,c) | 1,500.00 |
| 8271 ★★田 | 1993 American Music, 29c perforated horizontally uncut vertical gutter block of 16, yielding two pairs of uncut booklet panes of four separated by horizontal gutter, n.h., folded through the four stamps at top, some gum disturbances at bottom, still v.f., rare(2770aPa) | 1,000.00 |

| | | |
|----------|--|----------|
| 8272 ★★田 | 1993 American Music, 29c three different color stage proofs, imperforate uncut vertical gutters blocks of 16, yielding two pairs of uncut booklet panes of four separated by horizontal gutter, n.h., v.f.(2770aPb,c,d) | 2,500.00 |
| 8273 ★★田 | 1993 American Music (Hank Williams, The Carter Family, Patsy Cline and Bob Wills), 29c imperforate upper left Plate Number and "traffic lights" vertical pane of 20, consisting of two pairs of panes of four imperf. between, four additional stamps at bottom, separated by two horizontal gutters, n.h., folded between stamps at top, and through the bottom pair, some gum wrinkles and minor disturbances, v.f. and incredibly rare (catalogue value for four booklet panes, without any premium for the gutters and additional stamps) cat. \$6,000(2778aPa) | 2,500.00 |
| 8274 ★★ | 1993 American Music, 29c imperforate vertical gutter pair of two panes, also six corresponding stage proofs in yellow, rose, blue, magenta, black vignette only and black frame only, n.h., some gum bends, v.f. (catalogued as two sets of panes, uncut gutter pairs not listed) cat. \$6,600(2778aPa-g) | 2,500.00 |
| 8275 ★★ | 1993 American Music, 29c imperforate booklet pane of four, finished design as issued, plus six stages showing various colors, n.h., v.f., cat. \$3,300.....(2778aPa-g) | 1,500.00 |
| 8276 ★★田 | 1993 American Music, 29c imperforate upper left sheet margin inscription pair of booklet panes of four, finished design as issued, n.h., v.f., cat. \$3,000(2778aPg) | 1,000.00 |
| 8277 ★★田 | 1993 American Music, 29c part perf. vertical pane of 20, consisting of two pairs of panes of four imperf. between, four additional stamps at bottom, separated by two horizontal gutters, n.h., folded twice between stamps, some gum wrinkles and minor disturbances, v.f. and incredibly rare (catalogued as two uncut vert. pairs of panes, without premium for the additional stamps at bottom and gutters) cat. \$3,000(2778aPk) | 1,500.00 |
| 8278 ★★田 | 1993 American Music, 29c part perforated uncut pair of booklet panes of four, with sheet margin and plate numbers at left, n.h., v.f., cat. \$1,500(2778aPk) | 750.00 |
| 8279 ★★ | 1993 Classic Books, 29c horizontal gutter pane of two se-tenant strips of four, separated by vertical gutter, n.h., v.f.(2788a) | 250.00 |
| 8280 ★★田 | 1993 Classic Books, 29c cross-gutter pane of four se-tenant strips of four, separated by horizontal and vertical gutters, the former with minor abrasions at left, n.h., v.f.(2788a) | 500.00 |
| 8281 ★★田 | 1993 Classic Books, 29c vertical gutter pane of two se-tenant strips of four, separated by horizontal gutters, n.h., some abrasions at upper right stamp and gutter, otherwise v.f.(2788a) | 250.00 |
| 8282 ★★田 | 1996 James Dean, 32c imperf. lower left sheet corner margin block of four, n.h., minor gum disturbance, still v.f.(3082a) | 150.00 |
| 8283 ★★田 | 1996 James Dean, 32c imperforate pane of 20, n.h., v.f., cat. \$1,250(3082a) | 400.00 |
| 8284 ★★田 | 1998 Space Shuttle Issue, \$2.20 magenta and \$11.75 cyan (colors only), imperforate vertical gutter, unfolded se-tenant pane of 50 (25 of each value) on coated, ungummed paper, v.f., with PFC (singles and se-tenant gutter pairs are illustrated in 2020 Scott Specialized catalogue in the "Trial color, die and Plate Proofs", page 954)(3261-62Pa) | 2,500.00 |
| 8285 ★★田 | 1998 Space Shuttle Issue, \$2.20 magenta and \$11.75 cyan (colors only), imperforate vertical gutter, unfolded se-tenant pane of 50 (25 of each value) on uncoated, ungummed paper, v.f., with PFC (singles and se-tenant gutter pairs are illustrated in 2020 Scott Specialized catalogue in the "Trial color, die and Plate Proofs", page 954)(3261-62Pb) | 2,500.00 |
| 8286 ★★田 | 2003 37c Flag and Purple Heart, imperforate blocks of four, the latter with USPS imprint, n.h., v.f., cat. \$500(3639g,3784e) | 150.00 |
| 8287 田 | 2004 Wilma Randolph, complete booklet of 10, die cutting omitted, v.f., rare(3436e) | 250.00 |

United States Air Post

| | | |
|------------|---|--------|
| 8288 ★/★★田 | 1918 6c orange, 16c green, 24c carmine rose & blue, two sets of blocks of four, including arrow and center-line, l.h. or n.h., well centered, fresh, fine-v.f. (catalogued as singles), cat. \$2,145(C1-3) | 500.00 |
| 8289 ★★田 | 1918 6c orange, four center-line blocks of four, n.h., well centered, mostly v.f., cat. \$1,760(C1) | 400.00 |
| 8290 ★○ | 1918-23 selection of five graded stamps, including 6c orange (previously hinged) graded "XF 90", 16c green (previously hinged) graded "XF-Sup 95", 1923 24c carmine (previously hinged) graded "XF 90J", also used, graded "VF-XF 85J", all with 2017 PSE certificates, plus 1922 15c gray (previously hinged) graded "XF-S 95", with 2014 PFC, SMQ \$485(C5) | 200.00 |
| 8291 ★★ | 1923 16c dark blue, n.h., near perfect centering, with 2008 PSE certificate graded "XF-Sup 95" (SMQ \$425)(C5) | 300.00 |
| 8292 ★★ | 1923 24c carmine, n.h., near perfect centering, bright color, with 2019 PSE certificate graded "XF-Sup 95" (SMQ \$450)(C6) | 300.00 |

| | | |
|-----------|--|--------|
| 8293 ★/★★ | 1930 Zeppelin 65c-\$2.60 set of three, 65c sheet margin at left, l.h., \$1.30 h.r., last one n.h., all v.f., cat. \$1,360.....(C13-15) | 500.00 |
| 8294 ★★ | 1930 65c green, n.h., well centered, v.f., with 1995 PFC, cat. \$240(C13) | 250.00 |
| 8295 ★★ | 1933 65c green, n.h. well centered, fresh and v.f., with 2016 PFC for a block of four from which it originated, cat. \$240(C13) | 200.00 |
| 8296 ☒ | 1930 Zeppelin 65c green, used on registered Washington D.C. FDC to Buffalo, N.Y., v.f., cat. \$1,000(C13) | 250.00 |
| 8297 ★★ | 1930 \$1.30 brown, n.h., well centered, natural inclusion, with photocopy of a 2009 PSE certificate (for a block of four from which it originated) graded "XF 90" (SMQ \$800)(C14) | 300.00 |
| 8298 ★★ | 1930 \$1.30 brown, n.h., well centered, v.f., with 1995 PFC, cat. \$550(C14) | 250.00 |
| 8299 ○ | 1930 \$1.30 brown, machine slogan cancel, well centered, with 2018 PFC graded "XF 90" (SMQ \$625)(C14) | 300.00 |
| 8300 ★★ | 1930 \$2.60 blue, n.h., well centered, bright color, with 2019 PSE certificate graded "VF 90" (SMQ \$1,250)(C15) | 900.00 |



| | | |
|---------|--|----------|
| 8301 ★★ | 1930 \$2.60 blue, n.h., perfectly centered with wide margins, beautiful color, with 2018 PSAG certificate graded "98" (SMQ \$5,000)(C15) | 2,000.00 |
| 8302 ★★ | 1930 \$2.60 blue, n.h., left margin plate number single, nicely centered, with 2017 PFC certificate graded "VF 80" (SMQ \$950)(C15) | 600.00 |
| 8303 ★★ | 1930 \$2.60 blue, n.h., well centered, v.f., with 1995 PFC, cat. \$825(C15) | 500.00 |
| 8304 ○ | 1930 \$2.60 blue, used, neat perfect centering, fresh color, with 2019 PSE certificate graded "XF-Sup 95" (SMQ \$1,250)(C15) | 750.00 |



| | | |
|----------|--|-----------|
| 8305 (★) | Air Post Semi-Officials. 1911 Vin Fiz, 25c black, uncanceled on piece of official flight post card, the other side showing pilot Calbraith Rogers' portrait and portion of his plane, clear margins to just in as are almost all of the known examples, small corner crease ending in a tiny tear at top right, otherwise fine appearance of this extremely rare Air Post rarity, with 1991 PFC, also signed Diena, with his 2013 certificate. The Vin Fiz stamp was issued by Rodgers' wife for his attempted transcontinental flight in October 1911. Rodgers was competing for the \$50,000 prize offered by publisher William Randolph Hearst to the first person to complete the trip within 30 days. Vin Fiz refers to the popular soft drink maker who was the sponsor of Rodgers' flight. There are 13 recorded examples of the Vin Fiz adhesive, each trimmed close at one or more sides. The copy offered here is one of only 4(!) known unused, cat. \$55,000(CL2) | 27,000.00 |
|----------|--|-----------|

| | | | |
|------|---|---|--------|
| 8306 | ✉ | Flight Covers. 1933 (15 July) Darius-Girenas Transatlantic flight cover franked with 3c Newburgh, tied by Brooklyn July 15 cds, also "Lituanica" and corresponding violet cachets, signed by both fliers, Kaunas July 18 arrival pmk on back, v.f. | 250.00 |
| 8307 | ✉ | 1956 Rickenbacker, Eddie (1890-1973), World War I Ace and Medal of Honor recipient, 1956 FIPEX cacheted FDC signed "Capt. Eddie Rickenbacker", v.f. | 100.00 |
| 8308 | ✉ | Dornier Do X Flights. 1931 (10 Oct) American Legion flight cover, franked with 5c Winged Globe, used in combination with German franking, Dornier, Do-X hs and appropriate cachets, with Rio de Janeiro and Istanbul arrival pmks, signed by John Palando and further autographed by Admiral Byrd, with handstamp "Personally Carried by Russell Boardman to Istanbul Aboard the Plane Cape Cod", also an additional postcard and cover with German franking, flown on DoX to USA, fine-v.f. .. | 500.00 |
| 8309 | ✉ | Zeppelin Flights. 1937 (6 May) stationery entire envelope intended to travel "by Hindenburg", with additional 37c franking, canceled Princeton, N.J., via New York (May 6, 7 P.M.), only 25 minutes before the ill-fated disaster of the "Hindenburg", posted instead by air mail to Berlin, fine and historical item | 500.00 |
| 8310 | ✉ | 1937 (6 May) cover intended to travel "by Hindenburg", with 43c franking, canceled New York, May 6, 3PM, just hours before the ill-fated disaster of the "Hindenburg", addressed to Gabon, with Paris transit and Gabon arrival pmks, cover roughly opened at left, scarce historic item to uncommon destination | 500.00 |

Special Delivery

| | | | |
|------|----|--|--------|
| 8311 | ★★ | 1888 10c blue, n.h., well centered, v.f., with photocopy of a 2019 PFC for a block of four from which it originated, cat. \$1,150.....(E2) | 800.00 |
| 8312 | ★★ | 1888 10c blue, n.h., fresh and v.f., with a photocopy of a 2019 PFC for a block of four from which it originated, cat. \$650(E2) | 400.00 |



| | | | |
|------|-----|--|----------|
| 8313 | ★★ | 1894 10c blue, bottom left corner margin single, n.h., well centered, fresh color, v.f., with 2019 PFC, cat. \$2,000.....(E4) | 1,300.00 |
| 8314 | ★★ | 1902 10c ultramarine, top margin plate number single, n.h., fine, with 2018 PFC for a pair from which it originated, cat. \$500.....(E6) | 250.00 |
| 8315 | ★★田 | 1902 10c ultramarine, top sheet margin Plate Block of eight, n.h., folded vertically between stamps, centered to top, perf. separations, fresh and very good multiple, cat. \$5,750.....(E6) | 500.00 |
| 8316 | ★★ | 1908 10c green, top margin imprint single, n.h., near perfect centering, with 2004 PSE certificate graded "XF-Sup 95" (SMQ \$600)(E7) | 400.00 |
| 8317 | ★★ | 1922 10c deep ultramarine, n.h., well centered, with 2018 PFC graded "XF 90" (SMQ \$275) .(E12a) | 150.00 |

Postage Dues

| | | | |
|------|----|---|--------|
| 8318 | P田 | 1879 10c brown, plate proof on India, top imprint plate Number block of 12, some creases at left, otherwise v.f.(J5P) | 300.00 |
| 8319 | ★★ | 1879 30c brown, n.h., light vertical gum bend, otherwise fine, with 2019 William T. Crowe certificate, cat. \$800(J6) | 150.00 |
| 8320 | P田 | 1879 50c brown, plate proof on India, top imprint plate Number block of 12, v.f.(J7P) | 300.00 |

| | | |
|---------|---|----------|
| 8321 ★ | 1879 10c deep brown, Special Printing, part original gum, well centered, v.f., with 1990 PFC, cat. \$6,500(J12) | 2,500.00 |
| 8322 ★ | 1884 3c red brown, h.r., fresh and fine, with 2018 PFC, cat. \$1,050(J17) | 400.00 |
| 8323 ★★ | 1891 5c bright claret, n.h., well centered, v.f., with 2019 William T. Crowe certificate, cat. \$290.....(J25) | 100.00 |
| 8324 ★ | 1891 50c bright claret, h.r., fine, with 2019 William T. Crowe certificate, cat. \$600(J28) | 100.00 |
| 8325 ★★ | 1910 5c deep claret, n.h., v.f., with 2019 William T. Crowe certificate, cat. \$275(J48) | 100.00 |
| 8326 ★★ | 1912 50c deep claret, n.h., beautiful color, fairly well centered, fresh and v.f., with 2020 PFC for a pair from which it originated, cat. \$2,900(J50) | 1,500.00 |
| 8327 ★★ | 1914 1c carmine lake, n.h., well centered with wide margins, fresh color, with 2020 PSAG certificate graded "95" (SMQ \$600)(J52) | 450.00 |
| 8328 ★ | 1916 1c rose, small h.r., nice color, fine example of this rare stamp, with 1995 PFC, cat. \$4,000(J59) | 800.00 |

Offices in China

| | | |
|----------|---|--------|
| 8329 ○ | 1919 2c-30c surcharges, used on pieces, fine-v.f., cat. \$1,845(K1-12) | 500.00 |
| 8330 ★★田 | 1919 12c on 6c red orange, top margin plate number block of six, n.h., nicely centered, few natural gum skips, v.f., cat. \$1,500(K6) | 700.00 |
| 8331 ★ | 1919 \$1 on 50c light violet, small h.r., v.f., with 2019 William T. Crowe certificate, cat. \$550(K15) | 200.00 |
| 8332 ★★ | 1922 2c on 1c green, n.h., well centered with wide margins, fresh and v.f., with photocopy of a 2019 PFC for a block of six from which it originated, cat. \$225(K17) | 200.00 |

Official Stamps

| | | |
|---------|---|--------|
| 8333 S | 1875 Agriculture, 1c, 2c, 3c, 12c, 24c and 30c, six values, without gum as issued, fine-v.f., cat. \$1,687(O1-3,6,8-9S) | 350.00 |
| 8334 ★★ | 1873 Interior, 1c vermilion, bottom margin single, n.h., well centered, fresh color, v.f., with 2019 PFC for a block of eight from which it originated, cat. \$170(O15) | 150.00 |
| 8335 ★ | 1873 State, 6c dark green, l.h., well centered, fresh color, v.f., with 2018 PFC for a pair from which it originated, cat. \$250(O60) | 300.00 |



| | | |
|--------|--|----------|
| 8336 S | 1875 War, 1c deep rose, "SEPCIMEN" variety, unused without gum as issued, v.f., with 2019 PSE certificate, cat. \$3,000(O83Sa) | 2,500.00 |
| 8337 ★ | 1873 Justice, 6c purple, l.h., well centered, thin, v.f. appearance, cat. \$475(O107) | 150.00 |
| 8338 ★ | 1879 Treasury, 30c brown, part original gum, fresh color, small thin spots, fine appearance, with 2020 PFC, cat. \$2,400(O112) | 350.00 |

Newspaper Stamps

| | | |
|----------|--|----------|
| 8339 ★ | 1875 \$60 violet, heavy h.r., nice color, reperforated at bottom, otherwise fine example of this rare stamp, with 1999 PFC, cat. \$6,500(PR32) | 700.00 |
| 8340 (★) | 1883 Special Printing, 2c intense black, unused without gum as issued, nice color, irregular perforations at top, otherwise fine, with 2019 PFC, cat. \$1,750(PR80) | 300.00 |
| 8341 ★ | 1895 \$2 scarlet, small h.r., fresh color, well centered, v.f., with 2019 PFC, cat. \$2,250(PR108) | 1,300.00 |
| 8342 (★) | 1895 \$50 dull rose, unused without gum, straight edge at bottom, unused without gum, slight thin spots and light horizontal crease, fine appearance, with 1995 PFC, cat. \$2,750(PR112) | 200.00 |
| 8343 ○ | 1896 \$100 purple, used, well centered with wide margins, fresh color, with 2013 PFC graded "XF-S 95" (SMQ \$1,650)(PR125) | 800.00 |

Parcel Post

| | | |
|--------|---|--------|
| 8344 ★ | 1913 \$1 carmine rose, l.h., well centered, fresh and v.f., with a photocopy of a 2018 PFC for a pair from which it originated, cat. \$250(Q12) | 200.00 |
|--------|---|--------|

- 8345 ★★ 1913 \$1 carmine rose, n.h., well centered with jumbo margins, fresh color, with 1998 PFC and 2008 PSE certificate (both with selvage which has been removed and is included with the stamp) graded "XF 90J" (SMQ \$1,775)(Q12) 1,000.00

Revenue Stamps



- 8346 ○ 1863 Mortgage, \$25 red, imperforate, used, full margins all around, fresh color, with 2019 PSE certificate graded "XF 90", unlisted in SMQ, cat. \$3,250.....(R100a) 2,500.00

Private Die and Proprietary

- 8347 P 1862 four different proofs, with 4c Brown's Bronchial Troches, 4c Drake's Plantation Bitters (affixed on card), 1c Schenk's Mandrake Pills, also Dr. John Bull's Preparations, 1c black die proof die sunk on card, fine-v.f. 200.00

Duck Hunting Permit Stamps

- 8348 ★★田 1942 Baldplates, \$1 violet brown, bottom right corner margin plate block of six, n.h., v.f., with 2008 PSE certificate, cat. \$2,500.....(RW9) 800.00
- 8349 ★★ 1945 \$1 Shoveller Ducks, corner margin single, n.h., well centered, fresh color, with 2019 PFC graded "XF-S 95" (SMQ \$450)(RW12) 300.00
- 8350 ★★田 1964 \$3 Hawaiian Nene Geese, upper left sheet corner margin, plate no. block of four, n.h., v.f. (catalogued as singles) cat. \$400(RW31) 100.00

National Banknote Co. Proofs

- 8351 E 1869 1c-90c plate proofs on india mounted on large cards, bound in a special presentation album, hard bound with gold lettering "Proofs - United States Postage Stamps Series of 1869 Engraved by the National Bank Note Company", overall toning, mostly around the edges as often, proofs themselves fine-v.f.(112P-122P) 1,500.00

American Banknote Co. Proofs

- 8352 E 1947 presentation booklet containing seven different die proofs, each inscribed "Specimen" with designs for Liberty (1c), Communication (25c), Education (3c), Rembrandt (5c), Aviation (2c), Justice (3c) and Taj Mahal (5c), v.f. 200.00

CONFEDERATE STATES OF AMERICA

- 8353 ★★ 1862 5c light blue, n.h., huge margins all around with parts of adjoining stamps on all sides, a true gem, with 2015 PSE certificate graded "Gem 100J" (SMQ \$270 for "100")(6) 150.00
- 8354 ★★ 1863 2c brown red, n.h., huge margins all around with parts of adjoining stamps on three sides, with 2015 PSE certificate graded "Gem 100" (SMQ \$1,250)(8) 500.00
- 8355 ○ 1863 10c blue, tied on small piece by Milledgeville, GA cancel, margins all around, v.f., with 2017 PSE certificate, cat. \$2,100.....(10) 1,800.00
- 8356 ★★ 1863 10c greenish blue, n.h., huge margins all around with parts of adjoining stamps on all sides, a true gem, with 2014 PSE certificate graded "Gem 100J" (SMQ \$375 for "100")(11c) 250.00

| | | |
|---------|---|--------|
| 8357 ★★ | 1863 20c green, never hinged, jumbo margins with large parts of adjoining stamps on all sides, a true gem, with 2019 PSE certificate graded "100J" (SMQ \$750 for the grade of "100")(13) | 500.00 |
| 8358 ★★ | 1863 20c green, n.h., large margins all around, with 2016 PSE certificate graded "XF-Sup 95" (SMQ \$240)(13) | 150.00 |



| | | |
|---------|---|--------|
| 8359 ★★ | 1862 1c orange, n.h., jumbo margins with large parts of adjoining stamps on all sides, a true gem, with 2015 PSE certificate graded "Gem 100J" (SMQ \$1,700 for "100")(14) | 900.00 |
| 8360 ☒ | 1861 (9 Mar) Eleven Star flag, mostly intact cover from Memphis, cachet showing Red, White and Blue Flag facing right, with 11th Star added at bottom (for Tennessee), "Due 5" handstamp, some faults, rare(13) | 250.00 |

UNITED STATES POSSESSIONS

PHILIPPINES



| | | |
|----------|---|----------|
| 8361 ★★田 | 1903 4c brown, left plate number block of six, with sideographer's initials, n.h., well centered, v.f., with 2015 PSAG certificate (catalogue value for hinged plate block) cat. \$2,500(229) | 2,000.00 |
| 8362 ★ | 1904 \$2 dark blue, h.r., well centered, fresh color, with 2019 PFC graded "XF 90", unlisted in SMQ(238) | 750.00 |
| 8363 ★ | 1904 \$5 dark green, small h.r., nicely centered, fresh color, with 2019 PFC graded "VF-XF 95", unlisted in SMQ, cat. \$800(239) | 600.00 |

END OF THE FIRST SESSION