

# AUCTION SALE

## WEDNESDAY, APRIL 22, 2020

AT 10:00 A.M.

### United States

#### Stampless covers

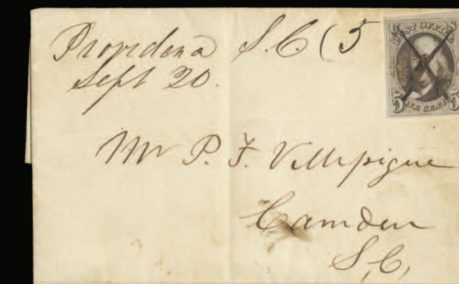
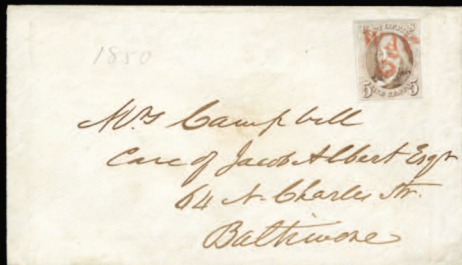
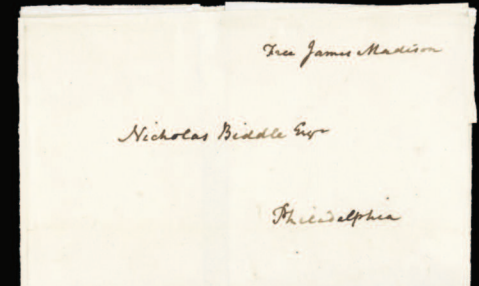
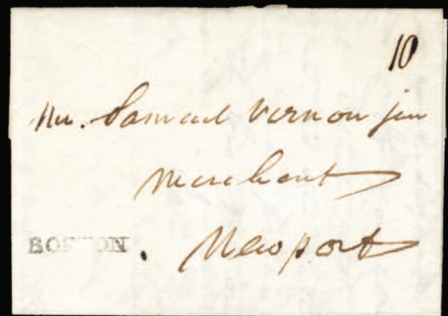
- |   |   |  |        |
|---|---|--|--------|
| 1 | ✉ | 1774-1799 three FLs, one from Hamburg ("5 No" and charged "4") to Providence, R.I, another from Boston (straight line "Boston") to Newport, last one from New York ("N York May 5") to Philadelphia, each with interesting markings and text, fine-v.f. ....   | 150.00 |
| 2 | ✉ | 1823 (Montreal, Canada, to Michilimackmac, Michigan Territory) April 3, 1823 dateline on folded letter from William M. Matthews in Montreal to Michilimackmac, Michigan Territory, "Paid" straightline with manuscript "6" pence rate and "Via Albany" directive, "Paid" crossed out and rated "18-1/2" cents (should have been 25c for over 400 miles), v.f. A nice fur trade letter with interesting content (Matthews was agent of John Jacob Astor's American Fur Company), ex Risvold ..... | 150.00 |



- |   |   |  |        |
|---|---|--|--------|
| 3 | ✉ | 1848 (17 March) FL from Lansing, Michigan to Rochester New York, with "March 22 Michigan, Mic." and "X" in circle, signed James Seymour alongside, fine <i>(in 1844, residents of nearby North Settlement built a dam and mill in what is now North Lansing, Michigan. Their employer, James Seymour, was a land speculator from New York. Recognizing an opportunity, Seymour proposed that the Michigan legislature, which was deadlocked over the site of a new capital, accept his water-power site in the yet-to-be developed wilderness)</i> ..... | 200.00 |
|---|---|--|--------|



- |   |   |  |        |
|---|---|--|--------|
| 4 | ✉ | 1850 San Francisco, Cal 10 Dec, red cds and matching "12½" cent rating handstamp, FL with integral address leaf to Hangtown, California (contents letter mentions "The steamers "Gen. Warren", "Columbus" and mail steamer "Carolina" arrived here from Panama bringing two-week late intelligence from the states - There are no news of any importance, Dr. Grays Uncle (A. Eastin) has sold out his gambling saloon and is going home on the steamer Isthmus. I called on Gen. the editor of the "Pacific News" and he has given me a permanent situation"), fine cover, ex-Risvold <i>(Hangtown was established as Old Dry Diggin's in 1848. Because of the influx of riffraff and criminals, who committed robberies and murders, the irate citizens took matters into their own hands and flogged or hanged the perpetrators and by 1849 the place was being called Hangtown. On April 9, 1850 the Post Office was established as Placerville, but it was not until 13 May, 1854 that the town was incorporated under that name)</i> ..... | 200.00 |
|---|---|--|--------|



20

21

23

24

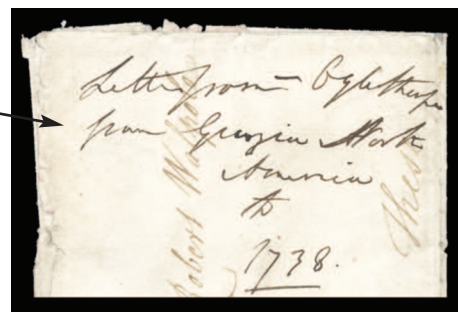


- 5 ☒ 1850 illustrated Anti-Slavery cover published in London, charged "due 3", used from Austinburg, O to Meadville, Pa., some backflap flaws, otherwise fine ..... 200.00

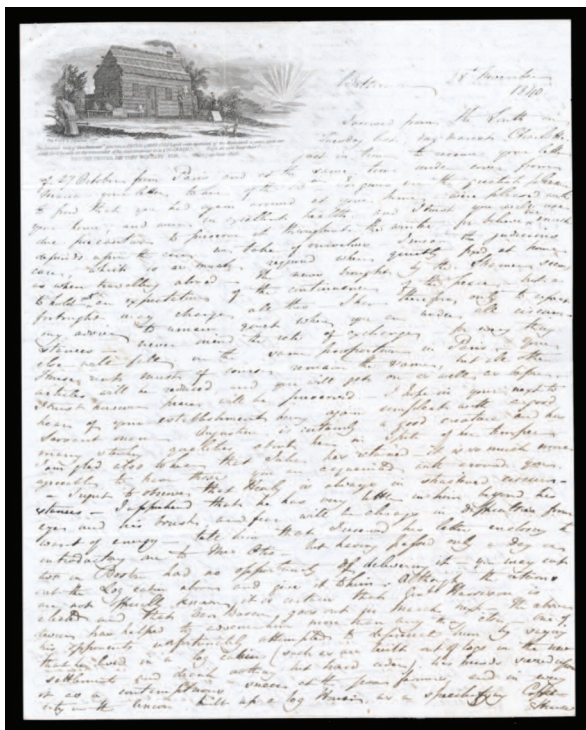


- 6 ☒ 1851 (Cherokee Nation) Tahlequah, C.N. Neat double circle postmark with manuscript date on forwarded cover to Massachusetts with manuscript "10" rate, cover forwarded to New Hampshire with red "South Hadley, Mass." cds & bold "5" rate handstamp, fine, with penciled description on back ..... 200.00
- 7 ☒ 1851 (10 Feb) FL with red "Apalachicola F. Ty" postmark, corresponding "20" at right, addressed to New Orleans, fine letter from Florida Territory, with 1957 bill of sale from Stanley Ashbrook ..... 150.00
- 8 ☒ 1854 (27 Feb) FL datelined James Bluff and sent to Mobile, Alabama, with oval "Steam 5" at upper right, fine ..... 150.00

### Free Franks & Autographed letters



- 9 ☒ 1738 large part of outer FL from **James Oglethorpe** in Georgia, addressed in his hand to Sir Robert Walpole, docketing reads "Letter from Oglethorpe from Georgia North America 1738", some tears and slipping along edges and folds, possibly the earliest recorded letter from Georgia (*James Oglethorpe was a founder and early leader of the Colony of Georgia. In January of 1733, he landed with Georgian colonists in South Carolina. He traveled south to the mouth of the Savannah River, sailing 18 miles upstream, and landing at the site of present-day Savannah. Sir Robert Walpole held many English political offices including "prime minister" from 1721 until 1742, when he was forced to resign as a result of failing health*) ..... 1,000.00
- 10 ☒ 1815 **James Madison**, undated but probably late free frank, outer FL signed "Free James Madison" to Nicholas Biddle, Esq., Philadelphia, tissue reinforcing along folds and splits, fine (*Nicholas Biddle was an American financier who served as the third and last president of the Second Bank of the United States. He also served in the Pennsylvania General Assembly*) ..... 400.00
- 11 ☒ 1840 **Martin Van Buren**, undated outer FL signed "M. Van Buren", with red "Albany Oct 31" pmks below, addressed in Van Buren's hand to William Chew, Philadelphia, fine ..... 400.00



- 12 ☒ 1840 (28 Nov) **William H. Harrison** campaign lettersheet with log cabin, J.S. Horton Baltimore imprint, datelined Baltimore, Md and addressed to Paris, with red Baltimore departure, appropriate transit and arrival markings, interesting contents and mention of the upcoming Harrison election, v.f. item related to the president with the shortest term in office. According to Dr. Milgram, "this is the finest of the log cabin designs and the only engraved version" (Milgram No. WH-33, rarity factor of three, less than five known) ..... 1,000.00
- 13 ☒ 1841 (4 Sept) cover signed twice **Daniel Webster**, with red "Free" and Washington D.C. Sep 4 cancel, addressed to Boston, red wax seal showing through on front, fine (*Daniel Webster was elected a New Hampshire congressman in 1813. He later served as a Massachusetts congressman and senator, becoming a leading proponent of federal action to stimulate the economy through protective tariffs, transportation improvements and a national bank. As U.S. secretary of state, he helped ease border tensions with Britain through negotiations of the Webster-Ashburton Treaty in 1842*) ..... 200.00



- 14 ☒ 1859 (18 Nov) stationery entire envelope 3c red on buff Nesbitt entire (U10) addressed to "Capt. **John Brown**, Care of Capt. Avis, Charlestown Virginia", red "Boston Mass. Nov. 18" circular datestamp and large "Paid" grid cancel, docketed at left "G. Havern, Cambridge Mass., Sympathy" (this does not appear to match examples of Brown's writing and is probably in the hand of a prison censor), endorsed "copied" on back, v.f., rare cover addressed to John Brown, probably sent in 1859 just prior to his hanging on December 2nd (*in October 1859, Brown led a raid on the federal armory at Harpers Ferry, Virginia. After his capture, he was hastily tried for treason against the Commonwealth of Virginia, the murder of five men and inciting a slave insurrection; he was found guilty on all counts and was hanged. He was the first person convicted of treason in the history of the country*). A rare cover, ex-Raymond Vogel collection (Siegel 2010 sale, \$2,300 hammer) ..... 750.00





- 15 1867 3c red, two horizontal pairs, target cancels, used on legal-size quadruple rate cover from Fort Gibson to Fort Leavenworth, Kansas, addressed in **George Armstrong Custer's** own hand to "Mrs Genl G.A. Custer Fort Leavenworth", minor cover faults at tears at right, outstanding example of Custer's handwriting on letter to his wife (on July 28, 1866, Custer was appointed lieutenant colonel of the newly created 7th Cavalry Regiment, headquartered at Fort Riley, Kansas. He took part in Hancock's expedition against the Cheyenne and was arrested and suspended at Fort Leavenworth, Kansas to August 12, 1868, for being AWOL, after having abandoned his post to see his wife) ..(94) 500.00

### Postmasters' Provisionals - New York, N.Y.



16



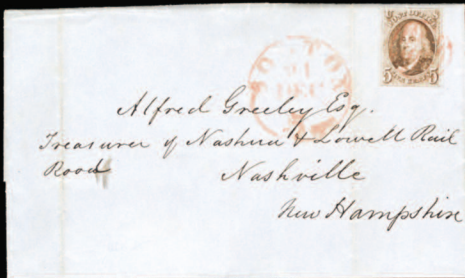
17

- 16 1845 5c black, signed ACM connected, tied by blue pen cancels on complete FL used from New York, November 8, 1846 to Providence, R.I., red "Paid" and "New York 5cts. 9 Nov" integral-rate circular datestamp alongside, stamp with margins all around and fresh, filing folds away from the stamp, v.f., cat. \$600 .....(9X1) 500.00
- 17 1845 5c black, signed ACM connected, double transfer at top (position 7) tied by blue pen cancels on complete FL used from New York, January 29, 1846 to Philadelphia, red "Paid" and "New York 5cts. 29 Jan" integral-rate circular datestamp alongside, stamp with large margins all around and fresh, v.f. early usage of double transfer on cover .....(9X1) 500.00



- 18 1845 5c black, double transfer at bottom (position 2), Without Signature, tied by blue pen cancels on FL used from New York, August 4, 1845 to Boston, double-struck red "Paid" "New York 5cts. 4 Aug" integral-rate circular datestamp alongside, stamp with margins all around and fresh, some inconsequential cover toning at right, v.f. and rare double transfer without signature on cover, with 1974 Royal certificate, cat. \$2,350 .....(9X1e) 1,500.00





29



47



42



31



34



39



40



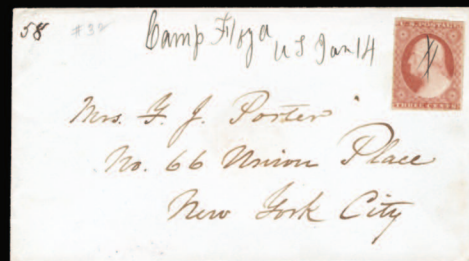
41



43



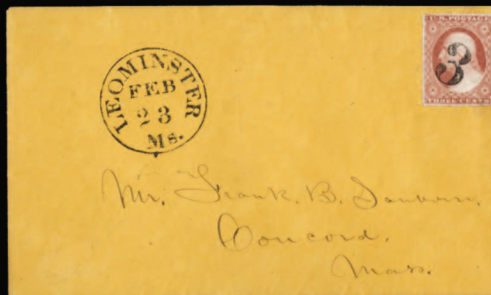
45



48



46



50



52



57



53



55



60



## Providence, R.I.



- 19 ★ 1846 5c gray black, lower left sheet corner margin single, l.h., with 2019 PSE certificate graded "XF 90" (catalogue value for ungraded stamp) cat. \$350 .....(10X1) 400.00

## 1847 Issue

- 20 P 1847 5c brown, large die plate proof on bond paper, with cross-hatchings (reduced), fine, cat. \$800 .....(1TC1bj) 150.00
- 21 P 1847 5c black, large die plate proof on bond paper, with cross-hatchings (reduced), v.f., cat. \$800 .. .....(1TC1bk) 150.00



- 22 ★ 1847 5c red brown, unused with small part original gum, margins all around, small thin spot and some paper wrinkling, good color, fine unused Number One, with 2019 PFC, cat. \$6,500 .....(1) 1,000.00
- 23 ○ 1847 5c red brown, face free red grid cancel, large margins all around including part of adjoining stamp at bottom, v.f. and beautiful stamp, with 1996 PFC, cat. \$350 .....(1) 250.00
- 24 ○ 1847 5c red brown, three slightly different shades, each with margins all around and fresh, two with red grids, one blue cancel, v.f. ....(1) 500.00
- 25 ☒ 1847 5c red brown, margins all around, v.f., canceled by blue "5" on outer FL to St Marys County, Md, corresponding Feb 21 departure pmk alongside, filing fold away from the stamp .....(1) 250.00
- 26 ☒ 1847 5c red brown, margins all around, v.f., canceled by red "Way" "5" on cover addressed to Baltimore, minor wrinkles away from the stamp, scarce, cat. \$925 .....(1) 300.00
- 27 ☒ 1847 5c brown, margins all around, canceled by pen cross on FL used in 1849 from Providence, S.C. Sept 20 (manuscript alongside), addressed to Camden, S.C., with "5" rate, v.f., signed "Herman Toasperm" on back. Apparently the only known 1847 usage from Providence S.C. (the Providence post office received no 1847 stamps of either denomination) .....(1) 250.00
- 28 ☒ 1847 5c brown, margins all around, beautiful deep color, v.f., tied by blue Troy, N.Y. Dec 25 circular date stamp on cover addressed to Washington County, N.Y., Dec. 24 1848 docketing, with 2004 PFC confirming Christmas Day usage .....(1) 250.00
- 29 ☒ 1847 5c red brown, margins all around, canceled by red grids on FL used in 1849 from Boston, December 24 to Nashville, N.H., addressed to Alfred Greely (treasurer of Nashua & Lowell Rail Road), filing folds away from the stamp .....(1) 200.00



- 30 ○ 1847 5c orange brown, red numeral cancel, margins all around including part of adjoining stamp at top, v.f., with 2019 PSE certificate, cat. \$825 .....(1b) 500.00

- 31 ○ 1847 5c red brown, red grid cancel, showing stitch watermark, margins all around, little paper discoloration and slight toning at bottom, otherwise v.f. ....(1var) 200.00



- 32 ★ 1847 10c black, unused part original gum, full to clear margins except just in at lower left, light vertical crease, otherwise a presentable original gum example, rare unused, with 2019 PSE certificate, cat. \$35,000.....(2) 6,000.00



- 33 (★) 1847 10c black, position 41R, showing Double Transfer Type "D" (left and bottom frames) variety, unused without gum, margins close but clear at bottom left, ample at right and showing part of adjoining stamp at top, light creases, intense color, fine appearance, with 1952 and 2019 Philatelic Foundation certificates (catalogued as ordinary stamp, without gum. Double transfer is only priced used at more than twice over the regular stamp) cat. \$15,000 .....(2var) 4,000.00
- 34 ○ 1847 10c black, blue cancel, full to clear margins all around, thin, fine appearance, signed Champion, cat. \$825.....(2) 150.00



- 35 ✉ 1847 10c black, margins all around, v.f., tied by light red grids on FL used in 1849 from New York (21 June) to Detroit, red departure cds alongside, filing fold away from the stamp, with 1985 PFC ... .....(2) 500.00





- 36 ✉ 1847 10c black, margins all around, fine, tied by blue grid cancel on FL used in 1847 from Baltimore, Md to Cattaraugus County, New York, addressed to Reverend Asher Wright, Cattaraugus Reservation (Reverend Asher Wright worked for 43 years among the Seneca, on the Cattaraugus Reservation), fine 1847 usage to uncommon destination .....(2) 1,000.00

### 1851-57 Issue



- 37 ★ 1851 1c blue, type 1A, position 98L4, unused with large part original disturbed gum, bottom sheet margin single, just touching at left, several small toned spots, brilliant rich color, fine and seldom offered unused 1c blue, type 1a with original gum and sheet margin, with 2019 PFC, ex-Caspary, cat. \$45,000 .....(6) 10,000.00



- 38 ○ 1851 1c blue, type 1a, town cancel, full margins all around clearly showing the type characteristics, fresh color, a seldom seen stamp in sound condition, with 1992 and 2020 PFCs, the latter graded "VF 80" (SMQ \$11,000) .....(6) 8,500.00
- 39 ★ 1851 1c blue, type IV, l.h., right margin single, margins just clear at top and left, fine, with 2000 PFC, cat. \$725.....(9) 150.00
- 40 ○ 1851 1c blue, type IV, used, full to huge margins all around including large parts of adjoining stamps at sides, a v.f. gem, with 2006 PSE certificate, cat. \$90.....(9) 150.00
- 41 ★ 1851 3c dull red, bottom sheet margin single, with full margins on other sides, l.h., v.f., with 2005 PFC, cat. \$250 .....(11) 150.00

- 42 (★)田 1851 3c dull red, bottom sheet margin block of four, unused without gum, with parts of adjoining stamps on all sides, tiny tear at outer margin at upper right, good color, fine positional piece ....(11) 250.00
- 43 ○ 1851 3c dull red, used, large margins all around including substantial portions of adjoining stamps at top and bottom, with 2005 PFC and 2006 PSE certificate, the latter graded "Superb 98J" (SMQ \$675) .....(11) 250.00



- 44 ☒ 1851 3c dull red divided into five parts and affixed on four corners, vignette at center, tied by faint departure cds on cover addressed to Newark, N.Y., fine and inventive usage, with 2009 PFC ....(11) 250.00
- 45 ○ 1851 3c dull red, Pos.14L2L, green York, PA cancel, also perforated 3c red, green grid cancel, fine, the former with 2005 APS certificate .....(11,26) 150.00
- 46 ☒ 1851 three covers, one with 3c dull red, canceled "3" on cover from Leominster to Concord, Mass; also 10c green, large margins, tied by red Port Clinton cancel on small cover (with contents) to San Francisco; plus 12c black, top sheet margin horizontal pair, tied by blue cancel on cover to England, minor cover wear, fine lot .....(11A,14,17) 250.00
- 47 ☒ 1851 (Sep) cover franked with 3c red, used from Chicago Sept 1856, addressed to "Hon Abhm Lincoln, Springfield, Ill," some creases ..... 150.00
- 48 ☒ 1851 3c red, canceled by pen cross on cover, with "**Camp Floyd, UT Jan 14**" (1859) dateline alongside, addressed to New York City, fine (*on 9 November 1858, amid gun fire and patriotic music, the soldiers of Camp Floyd, Utah Territory, raised the United States flag above their newly completed garrison. Named for Secretary of War, John B. Floyd, the post housed the largest concentration of U.S. troops to that time, in what immediately became the third largest city in Utah. Camp Floyd was a product of the so-called "Utah War." Influenced by rumors of rebellion in Utah, President James Buchanan ordered 2,500 soldiers led by Colonel Albert Sidney Johnston to Utah. After a short stay at the north end of the valley, Johnston moved his men across a creek from present-day Fairfield where soldiers, aided by Mormon laborers and artisans, built Camp Floyd*) ..... 150.00



- 49 ○ 1851 5c red brown, used, large margins all around, with 2007 PSE certificate graded "XF 90" (SMQ \$1,300) .....(12) 500.00
- 50 ○ 1851 10c green, type II, used, large margins all around, v.f., with 2001 PFC, cat. \$140.....(14) 100.00



- 51 ○ 1851 10c green, type II, used, huge margins all around including sheet margin at left, with 1991 PFC and 2004 PSE certificate, the latter graded "Superb 98" (SMQ \$1,200) .....(14) 750.00



- 52 ○✉ 1851 10c green, Type III, used single with large margins all around, blue cancel, also 10c Type II used in 1856 on cover addressed to Mass., with oval "Wells Fargo & Co. Express San Francisco" handstamp, stamp tied by New York and blue "Paid" in oval, v.f. ....(14,15) 200.00
- 53 ○ 1851 10c green, Type II, red cancel, large even margins, fresh and beautiful stamp .....(15) 200.00



- 54 ○ 1851 12c black, used, full, even margins all around, a beautiful stamp, with 2019 PSE certificate graded "XF-Sup 95" (SMQ \$1,150) .....(17) 800.00
- 55 ○ 1851 12c black, used, full margins all around including part of adjoining stamp at top, v.f., with 2004 PFC, cat. \$250.....(17) 100.00

## 1857-61 Issue



- 56 ★ 1857 1c blue, type I, l.h., bright color, usual centering, fine, with 2019 PSE certificate, cat. \$2,100 .. .....(18) 1,200.00
- 57 ★田 1857 1c blue, Type V, upper right sheet corner margin block of four, l.h., light crease at top, fine-v.f. ....(24) 200.00



- 58 ★田 1857 1c blue, Type V, lower right sheet margin block of ten, h.r. at top, minor perf. strengthening at bottom selvage, post office fresh, fine .....(24) 500.00
- 59 ★★ 1857 1c blue, type V, never hinged, well centered for this difficult issue, v.f., with 2003 PSE certificate (catalogue value for hinged) cat. \$140.....(24) 100.00
- 60 ✉ 1857 1c blue, 3c dull red and 10c green (two), canceled by red grids on small cover paying 24c and used in 1860 from New York, per "Africa" to Ireland, red "New York 19 June 20" departure and July 1 60 Raphoe arrival on back, stamps with minor perf. flaws, cover missing part of backflap, with some mending at top, fine three color franking to Ireland ..... 150.00
- 61 (★) 1857 3c rose, type I, unused without gum, well centered for issue, good color, faint thin, fine (catalogued as unused without gum) cat. \$950.....(25) 200.00





- 62 ☒ 1857 3c dull red (defective) and 10c green (three copies, one with closed tear), canceled by red grids on small cover used in 1861 to U.S. Consul at Sydney, New South Wales, red London March 22 transit, July 12 Ship Letter Sydney arrival, also red departure (Mar 9) both on back, fine 33c rate to Australia, with magenta due marking ..... 250.00
- 63 ☒ 1857 two covers, one 5c brown, tied by red New York transit and "Ship Letter" straight-line handstamp on outer FL (address portion partly repaired) from Boston, via New York and Havana to Santiago de Cuba, with "1" and "NA" arrival markings, the other 10c green, straight edge at right, tied by blue pmk on cover addressed to Washington Territory .....(29,35) 150.00



- 64 ★ 1857 5c orange brown, type II, heavy h.r., well centered for this difficult issue, v.f., with 2020 PSAG certificate, cat. \$1,200.....(30) 750.00



- 65 ○ 1857 10c green, type III, black cancel, well centered with wide margins, an exceptional stamp, with 2019 PSAG certificate graded "95" (SMQ \$3,000) .....(33) 1,500.00
- 66 ☒ 1857 (13 June) cover franked with 10c green, tied by "Rattlesnake Cal" cancel, addressed to Orange County, N.J., fine ..... 150.00
- 67 ○ 1857 12c black, used, with 2012 PSE certificate graded "VF 80" (SMQ \$350) .....(36) 250.00
- 68 ○ 1857 24c gray lilac, black town cancel, with 2008 PSE certificate graded "VF 80" (SMQ \$375) ..(37) 300.00



- 69 ☒ 1860 Abraham Lincoln, beardless Lincoln in ornate frame with imprint of engraver, stampless campaign cover addressed to 3rd Assistant Postmaster General Washington DC, green Rochester, ILL June 11 town postmark at bottom, manuscript "P.O.B." (Post Office business), fine, with 2008 PFC ..... 500.00

### 1875 Reprints of the 1857-61 Issue



70

71

72

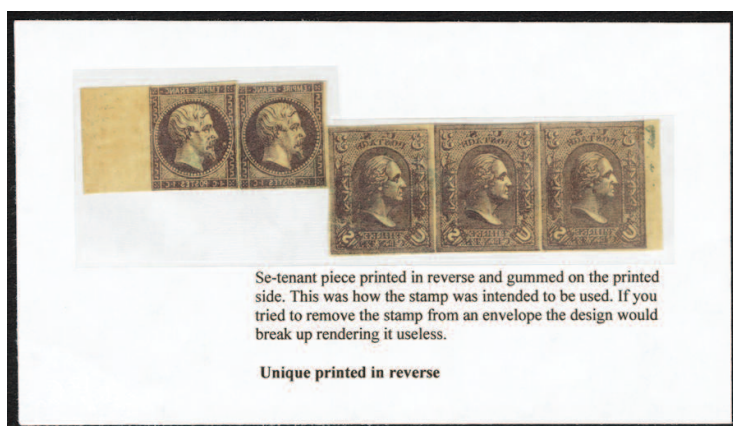
- |        |  |             |
|--------|--|-------------|
| 70 (★) | 1875 1c bright blue, unused without gum as issued, well centered, v.f., with 2016 PFC, cat. \$575 ....   | (40) 500.00 |
| 71 (★) | 1875 1c bright blue, unused without gum as issued, fresh color, v.f., with 2019 PSAG certificate, cat. \$575 .....   | (40) 300.00 |
| 72 (★) | 1875 10c blue green, unused without gum as issued, beautiful color, usual centering, reperforated at left and perf. thin, otherwise fine, only 516 printed, with 2019 PFC, cat. \$2,500..... | (43) 800.00 |

### 1861 Premiere Gravure



- |      |   |               |
|------|---|---------------|
| 73 ★ | 1861 30c red orange, Premiere Gravure, clear August shade, unused with original gum, fairly well centered, but with long, hinge reinforced vertical crack (tear) and gum soaks, fine appearance, with 1951 and 2019 Philatelic Foundation Certificates, ex-Huber. There are only 33 copies recorded (including one in the Miller Collection at the New York Public Library), with at least 20 with various faults. Siegel Census 61-OG-15 (currently listed in Scott catalogue as 71TC6) cat. \$40,000..... | (61) 4,000.00 |
|------|---|---------------|

### 1861-68 Issues



- |      |  |          |
|------|--|----------|
| 74 E | 1861 3c Washington, Lowenberg Essay on onionskin paper, printed in reverse, horizontal strip of three, se-tenant with France 1c Empire, horizontal pair, all in brown, usual light creases, fine, scarce ..... | 1,500.00 |
|------|--|----------|



- 75 ☒ 1861 1c, 3c (3), 5c and 10c (3), all canceled by Crossroad grids, paying 48 cents on FL used in 1864 from New York, per "Boston Steamer" to Paris, red departure and French entry pmks, boxed "PD" and Paris arrival pmk on back, fine and attractive four-color combination franking to France.....(63,65,68,76) 500.00
- 76 ☒ 1861 3c pink, canceled by Ann Arbor Oct 2, 1861 cds on all-over University of Michigan Ann Arbor advertising cover to St. Louis, v.f. and beautiful advertising cover with uncommon franking, with 1992 PFC, cat. \$775.....(64) 350.00
- 77 ★ 1861 3c rose, barest trace of a hinge, well centered, fresh color, v.f., with 2002 PFC, cat. \$125.(65) 100.00



78



79



80

- 78 ○ 1861 3c rose, centered to left, fancy "Eagle" cancel of Corry, Pa, splendid strike, with 1996 PFC (Skinner-Eno PT-E4), ex-Wade Saadi .....(65) 250.00
- 79 ○ 1861 3c rose, small faults, fancy "Lincoln in Circles of Stars" cancel of Albany, NY, excellent strike, with 1988 PFC (Skinner/Eno LC-NP15) .....(65) 250.00
- 80 ○ 1861 3c rose, centered to bottom, fancy Waterbury "Mug" cancel, with 1997 PFC (Rohloff Type O-9) .....(65) 250.00
- 81 ○ 1861 3c rose, two singles, one centered to bottom, fancy "Mule's Head" cancel, the other with small faults, fancy "Horse Head" cancel, with 2007 and 2012 PFCs .....(65) 250.00
- 82 ☒ 1861 3c rose, tied on cover by fancy "Charter Oak" cork cancel, with corresponding Thomaston, Conn Oct 8 cds, addressed to Avon, New York, backflap faults, otherwise fine, with 1980 PFC .(65) 150.00



- 83 ☒ 1861 3c rose, tied on cover by fancy "Man in the Moon" cancel, with corresponding Boston, Mass Mar 19 cancel, addressed to Vermont, v.f., with 2000 APS certificate (Skinner-Eno PH-F91) stated to be one of only two recorded covers .....(65) 500.00





97



100



101



102



103



104



105



106



113



108



107



112



115



116



118



119



122



- 84 ☒ 1861 3c rose, canceled by fancy geometric, with Worcester, Mass. Cds at left, used on (Farm Equipment) "Buckeye Mower and Reaper" illustrated design showing "Farmer on Horse Drawn Buckeye Mower" advertising cover, small cover nick in top left corner .....(65) 100.00
- 85 ○ 1861 3c rose, fancy "Devil and Pitchfork" cancel of West Meriden, Ct., fine .....(65) 150.00
- 86 ☒ 1862 3c rose, used on cover addressed to **Prof. T.S.C. Lowe, Chief Aeronaut**, with framed "Advertised" and Philadelphia Aug 7 1862 postmark, forwarded to Loretto Springs, due markings "Forw 3, adv. 1, due 4cts", fine (*Professor T. S. C. Lowe, was an American Civil War aeronaut, scientist and inventor, father of military aerial reconnaissance in the United States. In July 1861 Lowe was appointed Chief Aeronaut of the Union Army Balloon Corps by President Abraham Lincoln*) ..... 150.00



- 87 ○ 1861 5c buff, black grid cancel and small portion of red cancel, well centered, with 2019 PFC graded "VF 80" (SMQ \$850) .....(67) 600.00
- 88 ☒ 1861 10c green, vertical pair used on cover to Guatemala, addressed to Legation of the United States, with "4" due mark struck on arrival, fine usage to Guatemala, ex-Grunin, with 1989 PFC (68) 200.00
- 89 ○ 1861 12c black, blue cancel, huge margins, a v.f. gem, with 1992 and 2007 PFCs, cat. \$110.....(69) 100.00
- 90 ○ 1861 90c blue, neat "Paid" cancel, well centered with wide margins, faint marginal toned spot at top, otherwise v.f., with clear 1990 PFC, cat. \$625.....(72) 150.00



- 91 ☒ 1861 2c black, used on Sanitary Fair cacheted cover, tied by faint cds, some wear, otherwise fine, cat. \$2,000 .....(73) 500.00
- 92 ★ 1861 5c red brown, unused with full original gum, h.r., nice color and well centered, small thin spots and few short perforations at right, fine appearance, with 2019 PFC, cat. \$5,750.....(75) 500.00
- 93 ○ 1861 5c brown, used, extra large margin at bottom, v.f., with 2001 PFC, cat. \$120.....(76) 100.00
- 94 ○ 1861 15c black, used, well centered with wide margins, v.f., with 1998 PFC and 1998 PSE certificate, cat. \$175 .....(77) 100.00
- 95 ○ 1861 24c lilac, small faults, fancy "Union Soldier's Head" cancel, rare, with 1988 PFC .....(78) 150.00
- 96 ★ 1861 24c grayish lilac, unused with original gum, hinge remnants, fresh color, fine, with 2019 PFC, cat. \$2,750 .....(78a) 500.00
- 97 ☒ 1861 24c gray, horizontal pair, very fresh and partly lifted and replaced, tied by red pmk on outer FL from New York to Liverpool, red New York Pair All July 11 and Liverpool U.S. Packet 22 July arrival pmks, also framed "Supplementary Mail" handstamp partly on the stamps, filing fold away from the stamps, endorsed "per City of Baltimore" .....(78b) 250.00
- 98 ○ 1861 24c gray, also 12c black and 3c 1869 Issue, each with an unusual supplementary mail cancel, 12c thin, otherwise fine ..... 150.00

## Civil War Patriotic covers



- |     |   |  |        |
|-----|---|--|--------|
| 99  | ✉ | 1861 3c dull red (small diagonal creases), placed upside down and tied by blue Chicago grid and corresponding duplex cancel alongside, on Civil War Patriotic cover ("J D His Marque" and "A.L.-his marks") to Benson, Vt., with June 25, 1861 arrival docketing on back, rare Jefferson Davis/Abraham Lincoln caricature patriotic (Walcott 1003), with 2006 PFC, ex-Hennan ..... | 250.00 |
| 100 | ✉ | 1861 1c blue, vertical strip of three, canceled by grids on "13 Regiment Rifles, Mass. Vol." cacheted cover from Port Williams, Md Oct.17 (1861) to Roxbury, Mass., fine .....   | 150.00 |
| 101 | ✉ | 1861 3c rose (defective) canceled by blue geometric on "General Scott and Other Union Generals The Defenders of the Union" overall design in gray patriotic cover addressed to Ohio, with indistinct Iowa departure cds, minor cover tears & slightly reduced at right .....   | 150.00 |
| 102 | ✉ | 1861 3c rose, used on "Naval Combat off Fort Wright" red and blue all-over design cover (extensively repaired), used from Carbondale, ILL to Cairo, with "Received at Cairo, ILL Nov 15, 1862" postmark on back, fine appearance, rare .....   | 150.00 |
| 103 | ✉ | 1861 3c rose, used on "Connecticut" Patriotic cover, used from New Orleans, July 28, 1862 to Wilton, Conn., with arrival docketing, some toning .....  | 150.00 |
| 104 | ✉ | 1861 3c rose, tied by Washington D.C. Sep 17, 1861 pmk on Patriotic cover with verse, addressed to Northampton, Mass, v.f., with 2012 PFC .....  | 150.00 |
| 105 | ✉ | 1861 3c rose, used on "Jeff. Davis Going to War" Patriotic cover, used from St Louis, Mo. Oct 9, addressed to Illinois, fine .....   | 150.00 |
| 106 | ✉ | 1861 3c rose, used on "Scott and McClelland" Patriotic cover, used from St Louis, Mo. Jan 16, addressed to Michigan .....  | 150.00 |

## 1867 Grill Issue

- |     |   |   |        |
|-----|---|---|--------|
| 107 | E | 1867 3c Lowenberg, plate essay on onionskin paper in red, imperf. and gummed sheet of 25, usual creases and marginal wear, still fine and rare sheet, cat. \$250 .....(79-E8a)    | 100.00 |
| 108 | E | 1867 3c Lowenberg, plate essay on onionskin paper in violet, imperf. and gummed sheet of 25, usual creases and marginal wear, still fine and rare sheet, cat. \$250 .....(79-E8a) | 100.00 |



109



110



111

- |     |     |   |          |
|-----|-----|---|----------|
| 109 | ○   | 1867 2c black, D.Grill, used, well centered, fresh and fine, with 2018 PSE certificate, cat. \$4,750 ....(84)                 | 1,000.00 |
| 110 | (★) | 1867 3c rose, D.Grill, unused without gum, nice impression, with 2019 PSAG certificate graded "75" (SMQ \$2,000) .....(85)    | 2,000.00 |
| 111 | ○   | 1867 3c rose, Z.Grill, neat Rosette cancel, fairly well centered for this issue, v.f., with 2015 PFC, cat. \$3,250 .....(85C) | 2,000.00 |
| 112 | ○   | 1867 2c black, E.Grill, black cork cancel, well centered with even margins, v.f., with 2003 PFC, cat. \$190 .....(87)         | 100.00   |



113	✉	1867 3c red, used on cover with full back illustration for Kentucky Military Institute of Farmdale, Ky, with corresponding departure pmks alongside, addressed to Cape Girardeau, small cover tear, fine .....(88)	250.00
114	✉	1867 3c rose, E.Grill, tied by fancy "Padlock" cancel on small cover (slightly reduced at left) with "Cambridge, Mass. Jun 12" cds alongside, fine (Skinner-Eno No. PO-PI 4) .....(88)	150.00
115	○	1867 10c green, E.Grill, neat cancel, well centered with wide margins, fresh and v.f., with 2000 PFC, cat. \$325 .....(89)	150.00
116	(★)	1867 12c black, E.Grill, unused (regummed), few blunt perfs, otherwise fine, with clear 1981 PFC, cat. \$1,900 .....(90)	250.00



117	○	1867 15c black, E.Grill, neatly cancelled, well centered with jumbo margins, with 2019 PSE certificate graded "VF 80J" (SMQ \$725) .....(91)	500.00
118	○	1867 15c black, E.Grill, used, well centered with wide margins, two small thin spots, otherwise v.f. and seldom seen with such nice centering, with 1978 PFC, cat. \$600 .....(91)	150.00
119	○	1867 3c red, centered to right, perfectly struck fancy "Bee" cancel of New York, NY, with 2007 PFC (Skinner-Eno PA-13) .....(94)	250.00
120	✉	1867 3c rose, manuscript "1869" cancel, also "Spring Bluff, C.N." alongside on cover addressed to <b>"Allen Wright, Principal Chief C.N., Boggy Depot, C.N."</b> , some docketing at left, fine ( <i>Allen Wright became the Principal Chief of the Choctaw Nation in the fall of 1866 serving until the fall of 1870. His contribution to the spiritual, educational and political concerns of his people is unparalleled. He was a man of rare intellectual qualities and was prominently the scholar of his tribe. He was a masterful executive and will ever adorn the pages of Choctaw history as one of its most distinguished leaders. He passed away December 2, 1885, at his home at Boggy Depot where he is buried</i> ) .....(94)	200.00



121



123

121	○	1867 5c brown, F.Grill, used, well centered, with 1993 PFC and 2019 PSE certificate, the latter graded "XF 90" (SMQ \$2,350) .....(95)	1,500.00
122	○	1867 10c yellow green, F.Grill, lightly canceled, well centered wide margins, fresh and v.f., with 1995 and 2005 PFCs, cat. \$240 .....(96)	100.00
123	★	1867 12c black, F.Grill, l.h., well centered for this difficult issue, with 2020 PSAG certificate graded "75" (SMQ \$2,750) .....(97)	2,000.00
124	○	1867 12c black, F.Grill, used, well centered wide margins, fresh and v.f., with 1989 PFC, cat. \$250. ....(97)	100.00
125	○	1867 12c black, F.Grill, very thin paper variety, used, fine, with 2019 PSE certificate, cat. \$325 .....(97var)	200.00



120



103



124



125



129



130



131



133



134



135



136



140



137



139



143



145



147



149



150



152



142



151



156



157



158



161





- 126 ○ 1867 90c dark blue, F.Grill, used, well centered for this issue, nice color, with 2019 PSAG certificate graded "75" (SMQ \$1,500) .....(101) 1,200.00

### 1875 Re-Issue of the 1861-66 Issue



127



128

- 127 ★ 1875 1c blue, h.r., nicely centered, v.f., with 2019 PSE certificate, cat. \$750 .....(102) 700.00  
128 ★ 1875 1c blue, h.r., well centered, fresh and v.f., with 2001 PFC, cat. \$750 .....(102) 500.00

### 1869 Pictorials

- 129 ○ 1869 1c-90c complete set of eleven, used, various small faults, overall fine appearance ... (112-122) 500.00  
130 ★ 1869 1c buff, h.r., well centered, v.f., with 1995 PFC, cat. \$575 .....(112) 150.00  
131 ○ 1869 1c buff, fancy "Beer Mug" cancel of Morris, Illinois, v.f., with 1998 certificate (Skinner-Eno PO-Bm8) .....(112) 150.00



- 132 ☒ 1869 2c brown, 3c ultramarine and 10c yellow, tied by three strikes of black Bee fancy cancels on cover to France, with Nov 23 New York and "Insufficiently Paid" handstamps, charged "16" (decimes), with French entry and Nice, 6 Dec 1869 arrival pmk on back, fine .....(113,115,116) 500.00  
133 ★ 1869 3c ultramarine, h.r., fine, with 2018 PSE certificate, cat. \$225 .....(114) 250.00  
134 ★★ 1869 3c ultramarine, n.h., centered slightly to bottom, fine, with a photocopy of a 2018 PSE certificate for a block of four from which it originated (catalogued as hinged single) cat. \$225 .....(114) 100.00  
135 ★★ 1869 3c ultramarine, n.h., nicely centered, v.f., with a photocopy of a 2018 PSE certificate for a block of four from which it originated (catalogued as a hinged single) cat. \$225 .....(114) 300.00  
136 ○ 1869 3c ultramarine, green cancel, fine, with 1996 PFC, cat. \$316 .....(114) 100.00  
137 ○ 1869 3c ultramarine, canceled on piece by a perfectly struck fancy "Twelve Segment Rosette" cancel of Waterbury, Ct., with 2007 PFC (Rohloff P30) .....(114) 250.00  
138 ☒ 1869 3c ultramarine, also 3c red with grill, each used on a different "Grant & Colfax" campaign cover, fine-v.f. .... 250.00

- 139 ○ 1869 6c ultramarine, black target cancel and red exchange postmark, well centered with wide margins, v.f., with 1999 PFC, cat. \$275 .....(115) 100.00
- 140 ✉ 1869 6c ultramarine, tied by segmented cork and Edgarton, Mass. Apr 5, 1870 cancel alongside, on cover to Liverpool, with red New York transit and "Paid Liverpool U.S. Packet 17 Ap 70" at bottom, fine .....(115) 150.00



- 141 ★ 1869 12c green, unused large part original gum, well centered, v.f., with 2019 Crowe certificate, cat. \$1,850 .....(117) 1,000.00
- 142 ★田 1869 12c green, block of four, h.r., good color but centered to top, perf strengthened vertically, rare multiple, cat. \$14,000 .....(117) 750.00
- 143 ○ 1869 12c green, red cancel, well centered, fresh color, v.f., with 1986 PFC, cat. \$280 .....(117) 150.00



- 144 ★ 1869 15c brown and blue, type I, heavy h.r., nice colors, fine, with 1989 PFC, cat. \$9,000 .....(118) 1,000.00
- 145 ○ 1869 15c brown and blue, type I, used, near perfect centering, nice color, v.f., with 1998 PFC, cat. \$800 .....(118) 300.00



- 146 (★) 1869 15c brown and blue, type II, unused without gum, wide margins, v.f., with 2020 PFC, cat. \$975 .....(119) 700.00
- 147 ○ 1869 24c green and violet, used, nicely centered, with 2018 PFC graded "VF 80" (SMQ \$700) (120) 400.00



- 148 ○ 1869 24c green and violet, used, well centered with wide margins, with 2019 PSAG certificate graded "90" (SMQ \$1,850) .....(120) 800.00
- 149 ○ 1869 24c green and violet, used, well centered, v.f., with 2004 PFC, cat. \$600 .....(120) 250.00
- 150 ○ 1869 24c green & violet, light postmark, fresh, well centered, v.f., cat. \$600 .....(120) 200.00



- 151 P田 1869 30c ultramarine and carmine, plate proof on india, block of four, with striking color shift, v.f., cat. \$625.....(121P3) 500.00
- 152 ○ 1869 30c blue and carmine, circle of wedges cancel, wide margins all around, near perfect centering, v.f., with 2000 PFC, cat. \$375.....(121) 250.00



- 153 田 1869 30c ultramarine & carmine, horizontal block of 12, reasonably canceled by black grids, excellent colors and well centered for a large multiple, minor ironed out creases and wrinkles noted. The largest recorded unused multiple is a block of six, the largest recorded used multiple is a block of twelve, of which three or four are known. A wonderful large used multiple of the 30c 1869 Pictorial, no doubt on a heavy parcel and virtually all large multiples of this issue are faulty to some extent (catalogued as two blocks of four and two pairs) cat. \$9,000.....(121) 1,500.00



- 154 ★ 1869 90c carmine and black, heavy h.r., bright color, fine, with 1976 PFC and 2019 PSAG certificate, cat. \$11,000 .....(122) 3,500.00



- 155 ○ 1869 90c carmine and black, black bars cancel, well centered, owner's handstamp on reverse which does not show through, with 1996 PFC and 2009 PSE certificate, the latter graded "VF 80" (SMQ \$2,000) .....(122) 750.00
- 156 ○ 1869 90c carmine and black, used, short perf. and other small faults, fine appearance, cat. \$1,800.. .....(122) 250.00
- 157 ○ 1869 90c carmine and black, used, wide margins, small faults, fine appearance, cat. \$1,800 ....(122) 250.00

### 1875 Re-Issue of the 1869 Pictorials

- 158 (★) 1875 1c buff, unused without gum, well centered, v.f., with 2012 PSAG certificate, cat. \$220....(123) 250.00



162

163



164

166

167

168

169



170

171



172

173

174

175

177



179

182

189



180

181

183

194





- 159 ★ 1875 15c brown and blue, type III, h.r., nice centering, with 2019 PFC graded "VF 80" (SMQ \$1,400) .....(129) 1,000.00

### 1870-71 Issue



- 160 ★ 1870 1c ultramarine, large part original gum, faintly grilled, nicely centered, v.f., with 2019 PFC, cat. \$2,000 .....(134) 1,000.00
- 161 ★ 1870 3c green, Split Grill variety, l.h., fresh and fine, with 2020 PSAG certificate, cat. \$625 (136var) 250.00
- 162 ○ 1870 3c green, four different, occasional minor flaws, each with a different fancy cancel, including "Boys Head" (White House, N.J.), negative "Jack O'Lantern", "Acorn", "Fancy Flag", 1988-2005 PFCs .....(136,147,158,184) 500.00
- 163 ○ 1870 7c vermilion, used, well centered with wide margins, fresh color, v.f., with a 1990 PFC for a horizontal pair from which it originated, cat. \$500.....(138) 150.00
- 164 ○ 1870 10c brown, blue cork cancel, fine, with 2005 PFC, cat. \$850 .....(139) 500.00



- 165 ★ 1870 90c carmine, lightly hinged original gum, clearly defined grill, bright color, wide margins, fresh and fine, a rare stamp especially in such condition, with 1973 and 2011 PFCs, cat. \$25,000 .....(144) 12,000.00
- 166 ○ 1870 2c brown, natural straight edge at right, tiny pinhole at bottom right, fancy "Devil's Mask" cancel, with 1992 PFC .....(146) 150.00
- 167 (★) 1870 3c green, unused with "Read the New York Ledger" advertisement printed on reverse, fine and unusual item, with 1992 PFC .....(147) 150.00
- 168 ○ 1870 3c green, small faults, well struck fancy "Pig" cancel of Corry, Pa, with 2007 PFC .....(147) 250.00
- 169 ○ 1870 24c purple, lightly canceled, well centered, v.f., with 1996 PFC, cat. \$210.....(153) 100.00
- 170 ☒ 1870 24c purple, fresh and striking color, tied by red pmk on large part of outer FL from New York to Liverpool, red New York Pair All July 3 and Liverpool U.S. Packet 16 July arrival pmks, also framed "Supplementary Mail" handstamp at bottom, endorsed "per Manhattan", cat. \$1,500 .....(153) 250.00
- 171 ☒ 1871 two covers to England, one with 6c (2x3c) franking, addressed to the "SS Richmond, European Squadron", the other with 5c blue, addressed to London in 1877, each with arrival pmks, plus oval "B.F. Stevens Despatch Agent" forwarding agents datestamps ..... 200.00



185



186



189



192



195



190



196



197



198



199



200



205



206



207



208



209



210



217



211



212



218



213



216



222



## 1873 Continental Bank Note Company

172 ○	1873 1c ultramarine, fancy "KKK" (Ku Klux Klan) cancel of Beloit, Wisconsin, fine, rare, with 1992 PFC, ex-Wade Saadi .....(156)	150.00
173 ★	1873 3c green, l.h., well centered, with a photocopy of a 2019 PSE certificate for a horizontal pair from which it originated, graded "VF-XF 85" (SMQ \$175) .....(158)	150.00
174 ★★	1873 3c green, n.h., fresh color, v.f., with a photocopy of a 2014 PSE certificate for a block of nine from which it originated .....(158)	350.00
175 ○	1873 3c green, small faults, fancy "Running Stag" cancel, with 2007 PFC .....(158)	100.00



176 ○	1873 3c green, horizontal pair, centered to top, canceled on piece by fancy negative "Skull & Crossbones in Coffin" cancels of Pittsburgh, Pa, with 2013 PFC .....(158)	500.00
177 ★	1873 6c dull pink, barest trace of a hinge (appears n.h.), nicely centered, v.f., with 2000 PFC, cat. \$375 .....(159)	150.00



178 ○	1873 6c dull pink, bold "Indian Head" cancel, beautiful strike of this rare and desirable fancy cancel, stamp with minor flaws (last sold in a Siegel 2007 sale, \$750 hammer) .....(159)	300.00
179 ☒	1873 (19 Jan) <b>French Bar, M.T.</b> , clear strike of cds on cover franked with 3c Bank Note, tied by circular handstamp, 1875 docketing at left, rough opening at right, possibly the only recorded postmark from French Bar, Montana .....(159)	250.00
180 ○	1873 30c gray black, perfectly centered, v.f. used, with 1993 PSE certificate .....(165)	100.00
181 ○	1873 30c gray black, used, well centered with jumbo margins, with 2006 PSE certificate graded "VF-XF 85J" (SMQ \$220) .....(165)	100.00

## 1879 American Bank Note Company

182 ☒	1879 (10 Apr) <b>South Fork, Cal.</b> , double circle postmark (Williams unlisted) on cover to Ohio, franked with target canceled 3c Bank Note, cover tears and soiling, stated to be the only cover known from this town, signed W.Tatham .....(182)	150.00
183 ★	1879 1c blue, h.r., near perfect centering with wide margins, beautiful impression, fresh and v.f., with 1983 and 2003 PFCs, cat. \$200.....(182)	100.00
184 ★★	1879 2c vermillion, 15c orange, n.h., the former with large margins all around, minute gum wrinkles, v.f., cat. \$970 .....(183,189)	250.00
185 ○	1879 3c green, straight edge at right, minor flaws, fancy "Kicking Mule" cancel, with 2003 PSE certificate .....(184)	150.00
186 ○	1879 3c green, well centered, fancy "Skull and Crossbones" cancel, v.f., with 1988 PFC, ex-Wade Saadi .....(184)	250.00
187 ☒	1879 5c blue, used on cover from New York, sent via San Francisco to U.S.S. "Monocacy" Asiatic Squadron, Yokohama, Japan, with transit and arrival pmks on back, some cover wear, fine usage to Japan .....(185)	150.00



- |       |   |          |
|-------|---|----------|
| 188 ○ | 1879 6c dull pink, canceled by a virtually complete strike of "North-South Shaking Hands" fancy cancel, tiny thin speck and corner perf. crease at bottom left, beautiful strike, scarce and especially fitting on the Lincoln Issue (last sold in 2009 Siegel sale, \$2,600 hammer) .....(186) | 1,000.00 |
| 189 ○ | 1879 6c pink, light diagonal crease at top left, perfectly struck fancy "Segmented Cogwheel with Negative Star in Center" cancel, v.f., with 2006 PFC .....(186)  | 250.00   |
| 190 P | 1879 four se-tenant die proofs on proof paper, various colors, occasional thin spots, fine-v.f. ....(186-E1b/190E1c)  | 150.00   |



- |       |  |        |
|-------|--|--------|
| 191 ★ | 1879 10c brown, without secret mark, with original gum, heavy hinge remnants, nice color and well centered, small thin spot and creases, fine appearance, with 2019 PFC, cat. \$3,000 .....(187) | 500.00 |
| 192 ○ | 1879 30c full black, used, well centered, with 2011 PSE certificate graded "VF-XF 85" (SMQ \$185) .....(190)   | 150.00 |

### 1880 Special Printing of the 1879 Issue



- |         |  |           |
|---------|--|-----------|
| 193 (★) | 1880 1c dark ultramarine, unused without gum as issued, wide margins, beautiful color and completely sound, tiny natural inclusions at top left and at right, v.f., with 1952 and 2019 Philatelic Foundation certificates. Siegel Census records only 26 examples (this being 192-UNC-22), with more than half reported to have faults, ex-Huber, cat. \$57,500 .....(192) | 15,000.00 |
|---------|--|-----------|





- 194 (★) 1880 6c dull rose, unused without gum as issued, with fully intact perforations on all sides, wide margins, nice color, only 26 certified examples have been recorded with most of them having some degree of faults, with 1954 PFC and 2018 PSE certificate, the latter graded "F 70J" (SMQ \$50,000) cat. \$67,500.....(195) 30,000.00

### 1881-1888 Banknote Issues

- 195 ○ 1881 5c yellow brown, used, jumbo margins on all sides, an exceptional stamp, with 2006 PFC graded "XF 90J" (SMQ \$225) .....(205) 100.00
- 196 ☒ 1881 1c gray blue, canceled on cover (slightly reduced at left) by fancy "Skull and Crossbones" cancel, locally addressed Waverly New York, Feb 15, v.f. strike, with 2007 PFC .....(206) 250.00
- 197 ☒ 1881 1c gray blue, tied by oval Philadelphia cancel on advertising cover addressed to Poughkeepsie, N.Y., with arrival pmk on back, some toning on reverse, otherwise fine and attractive advertising cover.. .....(206) 200.00
- 198 ★★ 1882 3c blue green, n.h., wide margins, fresh and v.f., with 2019 PFC, cat. \$250 .....(207) 150.00
- 199 ★ 1882 6c deep brown red, h.r., nice color, v.f., with 2019 PSE certificate, cat. \$550 .....(208a) 350.00
- 200 ★★ 1883 2c red brown, n.h., well centered with wide margins, with 2019 PFC graded "VF-XF 85" (SMQ \$225) .....(210) 150.00



201



202



203



204

- 201 ○ 1883 2c red brown, small faults, canceled on piece by fancy "Locomotive & Tender" cancel of South Hanson, Mass., very rare, with 2007 PFC .....(210) 500.00
- 202 ○ 1883 2c red brown, small faults, perfectly struck (sideways) fancy "Skull and Crossbones" cancel of Stoneham, Mass, with 2006 PFC .....(210) 250.00
- 203 ○ 1883 2c red brown, well struck fancy "Skull and Crossbones" cancel of Stoneham, Mass, v.f., with 2000 PFC .....(210) 500.00
- 204 ○ 1883 2c red brown, fancy "Elephant" cancel of Campella, Ma, small corner crease at bottom, splendid strike, with 2014 PFC (Cole AN-18) .....(210) 250.00
- 205 ○ 1883 2c red brown, used, huge margins, with 2020 PSAG certificate graded "95J" (SMQ \$225) .....(210) 200.00
- 206 ★★ 1883 4c blue green, n.h., fresh color, fine, with 2018 PFC, cat. \$800 .....(211) 200.00
- 207 ★★ 1883 4c blue green, n.h., wide margins, fresh color, v.f., with 2004 PSE certificate (for a corner margin single, with selvage subsequently removed) cat. \$800.....(211) 250.00
- 208 ☒ 1883 2c green, straight edge at left, tied by fancy "Footprint" cancel on cover with corresponding Eagle Mills, N.Y. July 8, 1889 pmk alongside, addressed to Freys Bush, N.Y., with Troy transit and arrival pmks, small stain at upper right, otherwise fine, with 2002 PFC .....(213) 250.00
- 209 ★★ 1887 3c vermillion, n.h., fresh and v.f., with 2019 PFC, cat. \$180 .....(214) 150.00





221



223

228



229

231

234

236



237

238

239

241



240

242

244



248

249



254



210	★★	1887 3c vermilion, n.h., nicely centered, v.f., with a photocopy of a 2018 PFC for a block of ten from which it originated, cat. \$180 .....(214)	150.00
211	★★	1887 3c vermilion, n.h., near perfect centering, wide margins, fresh color, v.f., with 1999 PFC, cat. \$180 .....(214)	100.00
212	★★	1888 4c carmine, two n.h. singles, one with sheet margin, post office fresh, fine, cat. \$1,050 ... (215)	200.00
213	★★	1888 4c carmine, n.h., well centered, beautiful color, faint pencil notation on reverse, v.f., with 1981 and 2004 PFCs, cat. \$525 .....(215)	150.00



214



215

214	★★	1888 5c indigo, n.h., nicely centered, v.f., with 2018 PFC, cat. \$625 .....(216)	600.00
215	★★	1888 30c orange, n.h., well centered, with 2018 PFC graded "VF 80" (SMQ \$1,000) .....(217)	800.00
216	★	1888 90c purple, small h.r., fresh color, tiny natural inclusion, with 2019 PFC, cat. \$800 .....(218)	100.00

### 1890-93 Issue

217	★★	1890 6c brown red, n.h., v.f., with 1998 and 2019 PFCs, cat. \$160 .....(224)	150.00
218	★田	1890 8c lilac, top imprint ("Z Z") and plate no. 268 block of six, n.h., fresh and barely fine (catalogued as six singles) cat. \$810 .....(225)	150.00



219



220

219	★★田	1890 8c lilac, bottom margin plate number and imprint block of ten, n.h., some natural gum skips, fine-v.f., cat. \$3,250 .....(225)	750.00
220	★/★★田	1890 10c green, block of 25, eight stamps n.h., balance hinged (some reinforcing), lower left stamp thin, otherwise fine-v.f. (catalogued as singles) cat. \$6,520 .....(226)	750.00

### 1893 Columbian Exposition

221	★	1893 1c-\$5, complete set, mostly l.h., fairly well centered, few minor flaws possible, generally fine-v.f., cat. \$6,599 .....(230-245)	2,000.00
222	★★	1893 2c brown violet, "Broken Hat" variety, n.h., well centered with jumbo margins, fresh and v.f., with 2005 PFC, cat. \$160 .....(231var)	100.00

- 223 ★★ 1893 3c green, 5c chocolate, 6c purple, 8c magenta and 10c black brown, five values, n.h., all well centered, fresh and v.f., all except 6c with 1997-2004 PFCs, cat. \$767 .....(232/237) 250.00



224

225

226

- 224 ★★ 1893 3c green, n.h., well centered with wide margins, with 1993 and 2018 PFCs, the latter graded "XF 90" (SMQ \$185) .....(232) 150.00
- 225 ★★ 1893 4c ultramarine, n.h., well centered with wide margins, with 2019 PSAG certificate graded "90" (SMQ \$350) .....(233) 300.00
- 226 ★★ 1893 5c chocolate, n.h., well centered with wide margins, with 2019 PFC graded "XF 90" (SMQ \$450) .....(234) 350.00



- 227 ★田 1893 15c dark green, bottom imprint, plate no. 58 and letter "M" block of eight, l.h. at top, bottom stamps n.h., fresh and fine, cat. \$5,500 .....(238) 1,000.00
- 228 ★★ 1893 30c orange brown, n.h., natural gum skips, fresh and well centered, wide margins all around, v.f., cat. \$675 .....(239) 250.00
- 229 ★★ 1893 30c orange brown, n.h., well centered, v.f., with 2019 PSAG certificate, cat. \$675 .....(239) 400.00



- 230 ★田 1893 30c orange brown, bottom Plate No. 59, American Bank Note Company imprint and letter "N" block of eight, l.h. at left, other stamps n.h., fine and scarce plate block, cat. \$10,500 .....(239) 2,000.00
- 231 ★ 1893 50c slate blue, small h.r., fresh and fine, with photocopy of a 2014 PFC for a block of four from which it originated, cat. \$425 .....(240) 150.00



- 232 ★★ 1893 50c slate blue, n.h., well centered, v.f., with 1981 PFC and 2019 PSE certificate, cat. \$1,250.. .....(240) 1,500.00





- 233 ★田 1893 50c slate blue, bottom imprint, plate no.77 and letter "S" block of eight, h.r., somewhat disturbed original gum, pos.2 small thin at top, perf. separations and small penciled notation at bottom selvage, well centered, fine and presentable 50c Columbian plate block of eight (considerably rarer than plate block of six) cat. \$22,250.....(240) 2,500.00
- 234 ★ 1893 \$1 salmon, h.r., fairly well centered, hinge thin, otherwise v.f., cat. \$1,000.....(241) 250.00



- 235 ★★ 1893 \$1 salmon, n.h., beautiful color, nicely centered, fresh and v.f., with 2011 PSE certificate, cat. \$3,400.....(241) 3,500.00
- 236 ○ 1893 \$1 salmon, purple Registry cancel, well centered, v.f., with 1990 PFC, cat. \$525.....(241) 150.00
- 237 ○ 1893 \$2 brown red, perfectly struck New York Jan 1894 cancel, well centered and fresh, v.f. and beautiful stamp, cat. \$525 .....(242) 250.00
- 238 ○ 1893 \$2 brown red, used, nicely centered, v.f., with 1995 PFC, cat. \$525 .....(242) 250.00
- 239 ○ 1893 \$3 yellow green, perfectly struck Washington Aug 19 1895 cancel, well centered and fresh, tiny natural and inconsequential inclusion speck, v.f. and beautiful stamp, cat. \$750.....(243) 250.00
- 240 ★ 1893 \$3 yellow green, \$4 rose carmine, h.r., very good to fine, cat. \$3,350.....(243,244) 500.00
- 241 ★ 1893 \$4 rose, unused disturbed gum, tiny flaws, fine appearance .....(244) 200.00
- 242 ○ 1893 \$4 crimson lake, perfectly struck Tompkinsville, NY Mar 21 1894 cancel, well centered and fresh, minute thin speck and tiny closed perf. tear at bottom, beautiful stamp, v.f. appearance, cat. \$950.....(244) 250.00



- 243 ○ 1893 \$4 rose carmine, used, well centered with even margins, with 1986 and 2018 PFCs, the latter graded "XF 90" (SMQ \$2,150) .....(244) 1,200.00
- 244 ○ 1893 \$4 crimson lake, lightly canceled, well centered, fresh and v.f., with 2002 PFC, cat. \$950(244) 500.00





250



257



258



268



253



256



259



273

274



275

276



255

260



261



263



264



266



267



270



269





245



246



247

- 245 ★ 1893 \$5 black, bottom sheet margin "DD" imprint single, unused slightly disturbed original gum, h.r., exceptionally well centered amid large and even margins on all sides, two slightly shorter perforations at top, still a v.f. and most attractive \$5 Columbian, cat. \$2,300 .....(245) 750.00
- 246 ★ 1893 \$5 black, l.h., wide margins, rich color, fine, with 2018 PFC, cat. \$2,300 .....(245) 1,000.00
- 247 ○ 1893 \$5 black, used, near perfect centering, with 2019 PSAG certificate graded "90" (SMQ \$2,850). .....(245) 1,500.00
- 248 ○ 1893 \$5 black, New York town cancel, well centered, v.f., with 1979 and 2005 PFCs, cat. \$1,150..... .....(245) 750.00
- 249 ○ 1893 \$5 black, used, small faults, fine appearance, cat. \$1,150 .....(245) 150.00

### 1894-97 Bureau Issues

- 250 P田 1894 1c blue, plate proof on corner, corner margin block of four, v.f., cat. \$450 .....(247P4) 200.00



- 251 田 1894 1c (5), 2c and 5c, affixed on 2c stationery entire envelope by "Kicking Mule" cancels, used Dec. 1 1899 from Fort Townsend, Washington to San Francisco, address obliterated, with arrival pmk, some cover wear and toning, scarce "Kicking Mule" cancel struck 8 (!) times on a single cover 500.00



- 252 ★田 1894 2c carmine Lake, type I, bottom imprint and plate no. 20 block of six, bottom stamps n.h., top stamps h.r., minor perf. separations at bottom, intense color, fresh and scarce plate block, with 2014 PFC, ex-Curtis collection, cat. \$2,750 .....(249) 750.00

253 ★	1895 Postal counterfeits 2c perf. single, also perf. and imperf. pairs (the latter with small cross marks), plus 1932 2c carmine, all affixed on 1895 Post Office department "Counterfeit Postage Stamps" circular, cat. \$675.....(250(CF1-2))	250.00
254 ☒	1894 (19 March) <b>Reef, Ariz. (Cochise)</b> , bold cds (Meyer 1, rarity 6) on cover to Chicago, Ill., matching target tying 2 carmine, with 1901 arrival pmk, stated to be the only known postmark from Reef, Arizona .....	150.00
255 ★★	1894 2c carmine, Type II, top sheet margin single, n.h., fine, with 2019 William T. Crowe certificate, cat. \$1,200 .....	150.00
256 ★	1894 4c dark brown, left margin part imprint single, l.h., v.f., with 2019 PFC, cat. \$200.....(254)	150.00
257 ★★	1894 4c dark brown, corner margin single with dramatic foldover variety, n.h., v.f. ....(254)	150.00
258 ★田	1894 6c dull brown, bottom imprint and plate no. 28 block of six, h.r. at top, other five stamps n.h., perf. separations, fresh and fine plate block, cat. \$2,500 .....	300.00
259 ★田	1894 15c dark blue, bottom imprint and plate no. 52 block of six, h.r., minor gum toning just showing through on front, deep color, fine, cat. \$4,750 .....	500.00
260 ○	1894 15c dark blue, town cancel, well centered with jumbo margins, with 2018 PFC graded "VF-XF 85J" (SMQ \$140 for "85" and \$375 for "90") .....	200.00
261 ○	1894 \$1 black, type I, used, well centered, v.f., with 2019 PSE certificate, cat. \$350 .....	200.00



262 ★★	1894 \$1 black, type II, right margin single, n.h., nicely centered, v.f., with 2019 PSE certificate, cat. \$6,500 .....	4,000.00
263 ★	1894 \$2 bright blue, small hinge remnant, nice color, barely fine, with 2019 PFC, cat. \$2,750...(262)	400.00
264 ★	1894 \$2 bright blue, heavy h.r., nice color, fine, with 2019 PFC, cat. \$2,750.....(262)	700.00



265 ★	1894 \$5 dark green, l.h., fresh color, with 2020 PSAG certificate graded "70" (SMQ \$2,000) ....(263)	1,200.00
266 (★)	1894 \$5 green, unused with gum but with some adherence, centered to top, natural inclusion in right margin, brilliant color (catalogued as unused without gum) cat. \$2,100 .....	500.00
267 S	1895 2c-\$1, ten different, handstamped Specimen in violet, h.r. (2c, 4c and 15c without gum), few straight edges, 10c with perf. fault, otherwise fine-v.f., cat. \$1,185.....(267-276S)	250.00
268 ★田	1895 5c chocolate, top imprint and plate no. 190 block of six, bottom left and top center stamps l.h., others n.h., selvage and bottom right stamps with minor creases, well centered, v.f., with 1998 PFC, cat. \$675 .....	300.00
269 ★田	1895 8c violet brown, top imprint and plate no. 928 block of six, l.h. at bottom middle, other stamps n.h., perf. separations and thin at top selvage, stamps fine-v.f. (catalogued as singles without premium for plate block) cat. \$1,120 .....	300.00
270 ★★	1895 10c dark green, left margin part imprint single, n.h., v.f., with a photocopy of a 2018 PFC for a pair from which it originated, cat. \$280 .....	250.00





- 271 ★田 1895 10c dark green, top imprint and plate no. 305 block of six, few small hinge slivers where few perf. separations sensibly reinforced, rich color, fresh and fine, with 2014 PFC, ex-Curtis collection, cat. \$1,750 .....(273) 500.00



- 272 ○ 1895 \$1 black, lightly canceled, near perfect centering, with 2019 PSE certificate graded "XF-Sup 95" (SMQ \$1,000) .....(276) 750.00
- 273 ★ 1895 \$2 bright blue, l.h., fresh color, fine, with 2020 PFC, cat. \$900 .....(277) 400.00
- 274 ★ 1895 \$2 dark blue, l.h., nicely centered, v.f., with 2018 PFC, cat. \$900 .....(277a) 500.00
- 275 ○ 1895 \$5 dark green, used, fine, with 2018 PFC, cat. \$600 .....(278) 250.00
- 276 S 1895 \$5 dark green, handstamped Specimen in violet, h.r., natural straight edge at right, fine, cat. \$400 .....(278S) 200.00
- 277 ★★田 1897 2c rose carmine, block of four, n.h., fresh color, fine, with 2019 PFC (catalogued as singles) cat. \$3,400 .....(279Bc) 650.00
- 278 ★田 1897 4c rose brown, bottom imprint and plate no.1333 block of six, l.h., fresh and fine, cat. \$700.....(280) 150.00
- 279 ★★ 1897 10c orange brown, type II, top sheet margin single, n.h., fine, with a photocopy of a 2016 PSE certificate for a pair from which this came, cat. \$450 .....(283) 300.00
- 280 ★田 1897 15c olive, top imprint and plate no.264 block of eight, h.r. in the middle, other four stamps n.h., deep rich color, fine, cat. \$3,200.....(284) 500.00

### 1898 Trans-Mississippi Exposition

- 281 ★ 1898 1c-\$2 complete set of nine, h.r., fresh, mostly fine-v.f., cat. \$4,543.....(285-293) 1,000.00
- 282 ★★ 1898 1c-10c, six values, n.h., all well centered, fresh and v.f. group, with 2003-2007 Philatelic Foundation or PSE certificates (1c and 4c with certificates for blocks of four from which they originated) cat. \$1,640 .....(285-290) 500.00
- 283 ★★ 1898 4c orange, n.h., well centered, with 2018 PFC graded "VF-XF 85" (SMQ \$425) .....(287) 250.00
- 284 ★/★★田 1898 4c orange, 5c blue, 8c violet brown and 10c gray violet, top Plate no. imprint blocks of four, first one regummed, 5c l.h., last two n.h., 10c slightly disturbed gum with faint toning in margin on back, fine group of Trans-Mississippi Plate Blocks, cat. \$7,150 .....(287-290) 1,000.00





277



278



279



280



281



282



283



284



286



287



288



289



290



292



293



294



295





285	★★田	1898 8c violet brown, bottom margin plate number block of four, n.h., well centered, fresh and v.f., with 2019 PSAG certificate, cat. \$3,400.....(289)	3,500.00
286	★/★★田	1898 10c gray violet, left sheet margin and arrow block of four, top stamps hinged, bottom n.h., fine-v.f. (catalogued as singles) cat. \$1,130.....(290)	250.00
287	★	1898 50c sage green, small h.r., fresh color, v.f., with 2018 PFC, cat. \$600 .....(291)	300.00
288	★	1898 50c sage green, l.h., v.f., cat. \$600 .....(291)	200.00
289	★	1898 50c sage green, small h.r., fine, with 2017 PFC, cat. \$600.....(291)	200.00
290	★	1898 50c sage green, small h.r., well centered with wide even margins, fresh color, v.f., with 2004 PFC, cat. \$600 .....(291)	250.00



291	★	1898 \$1 black, l.h., nicely centered, rich color, v.f., with 2018 PFC, cat. \$1,500.....(292)	1,000.00
292	★	1898 \$1 black, barest trace of a hinge, reperforated, fine appearance, cat. \$1,500.....(292)	250.00
293	★	1898 \$1 black, small h.r., reperforated, fine appearance, cat. \$1,500 .....(292)	250.00
294	★	1898 \$1 black, h.r., well centered, small faults, v.f. appearance, cat. \$1,500 .....(292)	300.00
295	(★)	1898 \$1 black, unused (regummed), small faults, fine appearance (catalogued as unused without gum) cat. \$850 .....(292)	150.00
296	(★)	1898 \$1 black, unused without gum, fine, with 1980 PFC, cat. \$850 .....(292)	500.00



297	○	1898 \$1 black, used, with 2018 PFC graded "VF 80" (SMQ \$700) .....(292)	500.00
298	○	1898 \$1 black, used, small flaws, fine appearance, cat. \$700 .....(292)	150.00
299	★	1898 \$2 orange brown, part original gum, small faults, fine appearance, cat. \$1,900.....(293)	250.00
300	★	1898 \$2 orange brown, h.r., small faults, fine appearance, cat. \$1,900 .....(293)	250.00





296



298



299



300



302



303



304



307



308



309



311



310



312



315



316



318



322



324



317



319







- |       |   |        |
|-------|---|--------|
| 301 ★ | 1898 \$2 orange brown, l.h., fresh color, v.f., with 2018 PFC, cat. \$1,900.....(293)   | 900.00 |
| 302 ★ | 1898 \$2 orange brown, disturbed original gum, nice color, small diagonal crease, otherwise fine, with 2018 PFC, cat. \$1,900.....(293) | 500.00 |
| 303 ○ | 1898 \$2 orange brown, used, nice color, v.f., with 2017 PSE certificate, cat. \$1,050.....(293)  | 600.00 |
| 304 ○ | 1898 \$2 orange brown, neat oval registry cancel, v.f., with 2018 PFC, cat. \$1,050.....(293)   | 600.00 |



305



306

- |       |   |          |
|-------|---|----------|
| 305 ○ | 1898 \$2 orange brown, used, well centered with wide margins, with 2018 PFC graded "XF 90" (SMQ \$3,000) .....(293)       | 2,000.00 |
| 306 ○ | 1898 \$2 orange brown, very lightly canceled (appears unused), well centered, v.f., with 2004 PFC, cat. \$1,050.....(293) | 750.00   |
| 307 ○ | 1898 \$2 orange brown, Registry cancel, short perfs and other minute flaws, fine appearance, cat. \$1,050.....(293)       | 150.00   |

### 1901 Pan-American Exposition

- |        |   |        |
|--------|---|--------|
| 308 ★★ | 1901 1c-10c, set of six, n.h., all well centered and fresh, v.f. (1c graded "VF-XF 85" and 4c graded "XF 90"), each with 1997-2007 PSE certificate or PFC (catalogue value does not include premium for graded stamps) cat. \$957.....(294-299) | 500.00 |
| 309 S  | 1901 1c-10c, set of six, violet Specimen handstamps, l.h. or h.r., few rough perforations, still fine-v.f., cat. \$1,410.....(294-299S)   | 750.00 |
| 310 ★  | 1901 1c green & black, 4c deep red brown & black, varieties, each with center shifted to bottom, l.h. or n.h., fine .....(294,296var)   | 150.00 |
| 311 ★★ | 1901 4c deep red brown and black, n.h., well centered, with 2018 PFC graded "VF-XF 85" (SMQ \$225) .....(296)   | 150.00 |
| 312 ★★ | 1901 4c deep brown and black, right margin single, n.h., fine, with 2016 PFC for a pair from which it originated, cat. \$170.....(296)  | 150.00 |



- |         |  |          |
|---------|--|----------|
| 313 ★★田 | 1901 8c brown violet & black, bottom imprint and plate no.1150 block of six, n.h., slight natural gum offsets, perf. separations, fine, cat. \$6,000.....(298) | 1,500.00 |
|---------|--|----------|





320



329



328



335



325



331



332



340



336



338



342



339



343



345



344



347



346





- 314 ★田 1901 10c yellow brown & black, top left imprint, plate no.1151 block of eight, long string of Bureau pressmen's initials, l.h., deep rich colors and proof-like impressions, well centered, fine-v.f. (catalogued as plate no. block of six, plus two singles) cat. \$6,730.....(299) 2,500.00
- 315 ★★ 1901 10c yellow brown and black, n.h., with 2017 PFC graded "VF 80" (SMQ \$350) .....(299) 250.00

### 1902-08 Issue

- 316 田 1902 1c blue green, 2c carmine, booklet panes of six, l.h., faint thins in selvage, otherwise fine, cat. \$1,100 .....(300b,301c) 200.00
- 317 ★ 1902 2c carmine, 4c brown, bottom imprint and plate no. blocks of six, each separated, n.h., fine-v.f., cat. \$1,250 .....(301,303) 200.00
- 318 ★田 1902 3c and 4c blocks of four, three different shades of each, l.h. or h.r., fine-v.f., cat. \$1,320 .....(302,303) 250.00
- 319 ★★ 1902 5c blue, 6c claret and 8c violet black, n.h., well centered, fresh color, v.f., each with 1999-2004 PSE certificate or PFC, cat. \$410 .....(304-306) 200.00
- 320 ★田 1902 5c dark blue, bottom imprint and plate no.1540 block of six, also 13c purple black, top imprint and plate no.1473 block of six, h.r., first with irregular imprint at bottom left, the latter with pulled perfs at left, scarce plate blocks, cat. \$1,450 .....(304,308) 200.00



- 321 ★★ 1902 15c olive green, n.h., well centered with wide margins, with 2019 PFC graded "XF 90" (SMQ \$1,250) .....(309) 900.00
- 322 ★★ 1902 15c olive green, n.h., well centered, v.f., with 1998 PFC, cat. \$475.....(309) 200.00



- 323 ★田 1902 15c olive green, top imprint and plate no.3208 block of six, l.h. or n.h., fresh and scarce plate block, cat. \$3,250 .....(309) 750.00
- 324 ★ 1902 50c orange, l.h., nicely centered, v.f., with 2019 PSE certificate, cat. \$400 .....(310) 300.00
- 325 ★ 1902 50c orange, l.h., well centered, bright color, v.f., with 2004 PFC, cat. \$400 .....(310) 150.00



- 326 ★★ 1902 \$2 dark blue, n.h., fresh color, with 2019 PSAG certificate graded "75" (SMQ \$1,900) .....(312) 1,600.00



- 327 ★ 1902 \$5 dark green, l.h., fine, with 2019 PFC, cat. \$2,000.....(313) 800.00
- 328 ☒ 1904 (11 Sep) Gila, Ariz., bold sharp Doane type 2/2 postmark (Meyer 1, rarity 6) tying 2c carmine (natural straight edge at right) on cover to New Brighton, Pa., stated to be the Only Known Postmark From Gila (the Gila Post Office was very short-lived, opening in 1904 and closing the next year) ..... 150.00
- 329 ★★田 1906 1c green, 2c scarlet imperf. right imprint and plate no. blocks of six, n.h., v.f., the latter with 2008 PFC, cat. \$675.....(314,320b) 200.00



- 330 ★★ 1908 5c blue, n.h., large margins all around, with 2019 PSE certificate graded "XF-Sup 95" (SMQ \$850) .....(315) 600.00
- 331 ★ 1908 5c blue, l.h., large margins all around, v.f., with a photocopy of a 2015 PFC for a block of four from which it originated, cat. \$300 .....(315) 300.00
- 332 ★★ 1908 2c carmine, scarlet and lake, plus 1c-5c, all imperforate horizontal pairs, n.h., v.f., cat. \$598... .....(320,320b,320A,343-47) 150.00

### 1902-08 Coil Stamps



- 333 ★ 1908 2c carmine, perf. 12 vertically, horizontal pair, h.r., centered to left, faint diagonal bend at bottom right, very good. A rare 2c Shield Coil pair, with 1953 and 2019 Philatelic Foundation certificates, cat. \$17,500 .....(322) 2,000.00



## 1904 Louisiana-Purchase Exposition



- 334 ☒ 1904 1c-10c complete set of five, fine-v.f., canceled by St. Louis Exposition Station Nov 26 1904 cds on 1c McKinley stationery card addressed to New York .....(323-327) 250.00
- 335 ☒ 1904 1c-10c complete set of five, fine-v.f., used with 10c Special Delivery on 2c legal size stationery entire envelope, used locally in San Francisco May 28 1904, cover tears at top and on back .....(323-327) 250.00
- 336 ★★ 1904 1c green, n.h., jumbo margins, with 2004 PFC and 2005 PSE certificate, the latter graded "XF 90J" (SMQ \$300) .....(323) 100.00



- 337 ★★田 1904 3c violet, bottom margin plate number block of four, n.h., well centered, with 2018 PSE certificate graded "VF 80" (catalogue value for ungraded plate block) cat. \$1,050 .....(325) 750.00
- 338 ★★ 1904 5c dark blue, n.h., well centered, fresh color, with 2007 PFC graded "XF 90" (SMQ \$525) .....(326) 200.00
- 339 ★ 1904 10c red brown, small h.r. nicely centered, with 2018 PFC graded "VF 80" (SMQ \$130) ....(327) 100.00
- 340 ★/★★田 1904 10c red brown, block of four, lower right stamp n.h., others l.h., fresh, fine-v.f., cat. \$675(327) 150.00



- 341 ★★田 1904 10c red brown, top imprint and plate no.2105 block of six, lower left stamp l.h., others n.h., fine, cat. \$2,250 .....(327) 500.00





348



351



353



349



350



352



358



359



354



364



365



372



366



373



371



374



375



378



376



**1907 Jamestown Exposition**

- 342 ★ 1907 5c blue, l.h., well centered with jumbo margins, with 2005 PSE certificate graded "XF-Sup 95J" (SMQ \$525) .....(330) 200.00

**1908-09 Issues**

- 343 ★ 1908 1c-\$1 complete set of 12, mostly l.h., few n.h., fine-v.f. (catalogued as hinged) cat. \$1,120.....(331-42) 300.00
- 344 1908 2c carmine, booklet pane of six, Seattle Washington cancels, fine and rare used pane, with 2018 PFC, cat. \$500 .....(332a) 250.00
- 345 ★田 1908 4c orange brown, 5c blue, top or bottom imprint. Star and plate no. blocks of six, h.r., fine-v.f., cat. \$1,000 .....(334,335) 250.00
- 346 ★田 1908 8c olive green, 15c pale ultramarine, bottom or top imprint and plate no. blocks of six, h.r., few stamps n.h., fine-v.f., cat. \$1,175.....(337,340) 250.00
- 347 ★田 1908 10c yellow, right imprint and plate no.4944 block of six, barest trace of hinge marks on two stamps, others n.h., well centered, v.f., with 2014 PFC, cat. \$800.....(338) 250.00
- 348 ★★田 1908 13c blue green, top imprint and plate no.4946 block of six, n.h., bright color, fine-v.f., cat. \$875 .....(339) 250.00
- 349 ★ 1908 50c violet, barest trace of a hinge (appears n.h.), well centered, v.f., with 2004 PSE certificate, cat. \$275.....(341) 100.00
- 350 ★ 1908 50c violet, h.r., nicely centered, with 2019 PFC graded "VF-XF 85" (SMQ \$375) .....(341) 250.00
- 351 ★田 1908 50c violet, block of four, h.r., fine, cat. \$1,200.....(341) 250.00
- 352 ★ 1908 \$1 violet brown, l.h., fresh and v.f., with 2003 PFC, cat. \$450 .....(342) 150.00
- 353 ★田 1908 imperforate 4c and 5c left imprint, plate no. blocks of six, the former with Star, h.r., v.f., cat. \$485 .....(346,347) 150.00
- 354 ○ 1908 1c green, vertical pair, used, well centered, with 2019 PFC graded "VF-XF 85" (SMQ \$225) ....(348) 200.00



- 355 ★★ 1909 2c carmine, horizontal guide line pair, n.h., fresh color, right stamp with natural crease, otherwise fine, with 2018 PFC, cat. \$1,750.....(353) 600.00

**1909 Bluish Paper**

356

357

- 356 ★★ 1909 6c red orange, n.h., bright color, fresh and v.f., with 2020 PSAG certificate, cat. \$3,000 ..(362) 2,000.00
- 357 ○ 1909 13c blue green, used, wide margins, v.f., a rare used stamp, with 1984 and 2001 PFCs, cat. \$4,000.....(365) 2,000.00
- 358 ★ 1909 15c ultramarine, h.r., fine sound example, with 2020 PFC, cat. \$1,250.....(366) 500.00
- 359 ○ 1909 15c pale ultramarine, exceptionally well centered and fresh, used, with 2009 Philatelic Foundation certificate "genuine, but decline opinion with respect to whether the cancel is contemporary", offered on the merit of this certificate only.....(366) 500.00

**1909-13 Issues**

- 360 ★★田 1909 Seward, imperf. bottom plate no. block of six, l.h., also Hudson-Fulton top perf. and left imperf. plate no. blocks of six, first with few opened perfs, n.h., fine-v.f., cat. \$1,025 (web photo).....  
.....(371,372,372) 250.00



- 361 ○ 1911 3c deep violet, Type I, Orangeburg coil single, perf. 12 vertically, machine cancel as always, usual centering, tiny thin spot, creases and sealed tear, otherwise fine example of this rare Coil, with 2019 PFC, cat. \$10,000.....(389) 4,000.00



- 362 ○ 1910 2c carmine, vertical guide line pair, black duplex cancel, nicely centered with wide margins, with 1998 and 2019 PFCs, the latter graded "XF 90" (SMQ \$2,900) .....(391) 2,000.00



- 363 ○ 1910 1c dark green, horizontal guide line pair, machine cancel, v.f. and seldom seen used, with 2017 PFC, cat. \$500 .....(392) 500.00
- 364 田 1912 cover with 2c franking, canceled 1 January, with attractive "How to Make a Fortune" cachet on both sides, letter enclosed, also 1907 illustrated "White Mountain Refrigerators" and "Whalebones" covers, last two franked with 2c red, fine-v.f. .... 200.00

**1913-15 Panama-Pacific Exposition**

- 365 ★/★★田 1913 1c-10c orange yellow, four different blocks of four, 1c, 2c and 5c with top stamps hinged, bottom stamps n.h., 10c hinged, fine-v.f., cat. \$1,107 .....(397-400) 200.00
- 366 田 1913 1c-10c complete set of four, with two additional 1c green, used on cover from Saginaw, Mich, March 28 1913 to Chicago, fine-v.f. ....(397-400) 250.00
- 367 ★★田 1913 1c green, 2c carmine, bottom panes of 70, n.h., the latter with selvage at right (only one plate block at bottom), top left 1c single small tear, others fine-v.f., cat. \$5,797 (web photo).....(397,398) 1,000.00





368



369

- |     |    |  |          |
|-----|----|--|----------|
| 368 | ★★ | 1913 5c blue, n.h., perfectly centered with wide margins, beautiful color, an exceptional stamp, with 2014 PSE certificate graded "Superb 98" (SMQ \$1,650) .....(399) | 1,200.00 |
| 369 | ★★ | 1913 5c blue, n.h., near perfect centering, with 2019 PSAG certificate graded "95" (SMQ \$650) .....(399)  | 500.00   |



- |     |       |  |          |
|-----|-------|--|----------|
| 370 | ★★田   | 1913 5c blue and 10c orange yellow, bottom and top plate no. blocks of six, n.h., natural gum skips, bright colors, fresh, fine or better, cat. \$6,950 .....(399,400) | 1,500.00 |
| 371 | ★★田   | 1913 10c orange yellow, left plate no. 6130 block of six, n.h., fine, cat. \$3,750 .....(400)  | 500.00   |
| 372 | ★★    | 1913 10c orange, n.h., well centered, with 2005 PSE certificate graded "VF-XF 85" (SMQ \$550) .....(400A)  | 350.00   |
| 373 | ★/★★田 | 1913 10c orange, block of four, top stamps l.h., bottom stamps n.h., fine (catalogued as singles) cat. \$1,130 .....(400A)   | 250.00   |
| 374 | ★★    | 1915 Perf. 10, 1c-10c, set of four, n.h., fine, cat. \$2,195 .....(401-404)  | 650.00   |
| 375 | ★★    | 1915 2c carmine, n.h., well centered with jumbo margins, with 2006 PSE certificate graded "VF-XF 85J" (SMQ \$275) .. (402)   | 100.00   |
| 376 | ★/★★田 | 1915 5c blue, block of four, top stamps hinged, bottom n.h., fine-v.f. (catalogued as singles) cat. \$1,050 .....(403)   | 200.00   |
| 377 | ★田    | 1915 5c blue, left plate no. 6129 block of six, l.h., fresh and fine plate block, cat. \$3,800 .....(403)  | 500.00   |
| 378 | ★     | 1915 10c orange, l.h., fresh color, v.f., with 2019 PFC, cat. \$650 .....(404)   | 400.00   |



- |     |    |   |          |
|-----|----|---|----------|
| 379 | ★★ | 1915 10c orange, n.h., fresh color, v.f., with 2011 PFC for a block of four from which it originated, cat. \$1,600 .....(404) | 1,200.00 |
|-----|----|---|----------|



- 380 ★田 1915 10c orange, block of four, h.r., fresh color, fine-v.f., with 2019 PFC, cat. \$3,000 .....(404) 2,000.00



- 381 ○ 1915 10c orange, used, perfectly centered with jumbo margins, fresh color, a true gem, with 1991 PFC and 2006 PSE certificate, the latter graded "Superb 98J", this being the highest grade awarded to a used no. 404 and the only one known in the SMQ Population report (SMQ \$1,200) .....(404) 500.00

**END OF THE FIRST SESSION**