

AUCTION SALE

TUESDAY, NOVEMBER 12, 2019

AT 10:00 A.M.

UNITED STATES

Stampless covers

- 1 1842 (3 Feb) Baltimore, Md and matching "5" in blue oval on outer FL to Hager Town, Md, fine, with PFC 100.00

Postmasters' Provisionals - St. Louis, Mo.

- 2 1845 10c black, greenish, pen canceled, with margins all around, defective, presentable appearance, cat. \$8,000 (11X2) 500.00



- 3 1846 10c black on greenish, margins tied by red "St. Louis Mo. Dec 18" town postmark on FL datelined "St. Louis, December 17/45", addressed to Messrs. P. A. Breithau New York, with matching straight line "Paid" and "Paid 10" by pen at upper right, minor soiling and filing folds away from the stamp which is v.f. (listed as cover number 27 on the Faiman census), with 1972 Wolfgang Jakubek, 1974 Willy Balasse and 2019 Philatelic Foundation certificates, handstamped John F. Seybold (Purple handstamp on reverse), also ex-Erivan, cat. \$14,000..... (11X2) 10,000.00



1



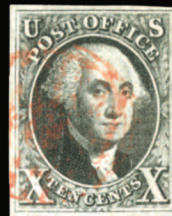
2



5



6



8



10



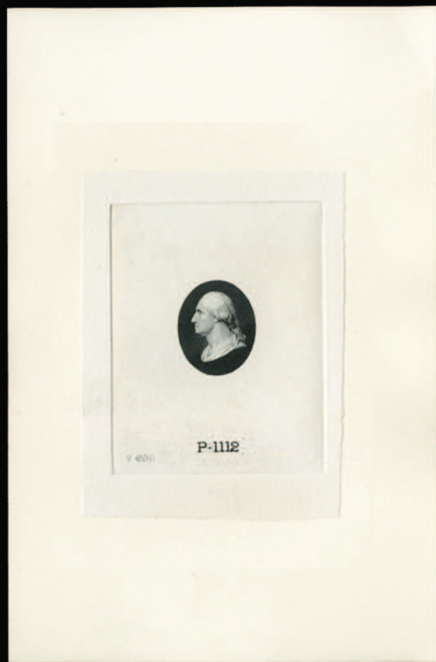
11



19



12



13



16



18



21



22



24



27

1847 Issue



- 4 P 1847 5c deep blue, large die trial color proof on bond paper, with cross-hatchings, v.f., cat. \$800 (1TC1b) 500.00
- 5 ○ 1847 5c red brown, red grid cancel, margins all around, v.f., cat. \$350(1) 150.00
- 6 ○ 1847 5c red brown, red grid cancel, margins all around, v.f., with 2017 PFC, cat. \$350(1) 200.00



- 7 ☒ 1847 5c brown, margins all around, canceled pen marks, minor toning, used on FL (with additional letter) from Baltimore 4th March 1848 to Bremen, Germany, with blue Baltimore, Md, March 5 departure postmark alongside, also matching "5" in oval, charged "44" in red crayon, with arrival pmk on back, fine usage to Germany, with 2019 PFC, cat. \$3,000.....(1) 1,000.00
- 8 ○ 1847 10c black, red cancel, full to large margins all around, v.f., with 1990 PFC, cat. \$775(2) 300.00



- 9 ○ 1847 10c black, red grid cancel, margins all around, with 2019 PSE certificate graded "VF-XF 85" (SMQ \$1,225)(2) 850.00
- 10 ☒ 1847 10c black, margins all around, tied by light red cancel on FL from New York to Fort Finch, Arkansas, red departure pmk alongside, some cover toning, stamp v.f., signed Calves(2) 500.00
- 11 ☒ 1847 10c black, margins all around, tied by red grids on FL used in 1850 from New York to Baltimore, fine-v.f., cat. \$1,050.....(2) 600.00

1851-57 Issue

- 12 E 1851 Jocelyn, Draper, Welsh & Co., New York, George Washington vignette in black, full imprint, large die on full card, with penciled "Imprint changed to Draper Welsch & Co. H. Farell" and numbers at bottom, v.f., cat. \$300(11-E9c) 200.00
- 13 E 1851 George Washington vignette in black, with V45341 die and "P-1112", large die on full card, v.f., rare(11-E11) 250.00
- 14 E 1851 George Washington vignette in black, with V45341 die and "P-1112", large die on full card, v.f., rare (web photo)(11-E11) 250.00



- 15 E 1851 George Washington vignette in black, with V39907, horizontal design, large die on full card, v.f., rare(11-E11) 500.00
- 16 E 1851 George Washington vignette with outer frame line, complete uncut large die in black, "V37991" die, on full card, v.f., rare (cat. \$700 for die cut to shape)(11-E24) 500.00



- 17 ○ 1851 10c green, type I, black grid cancel, margins all around, with 2015 PFC graded "VF-XF 85" (SMQ \$1,225)(13) 900.00
- 18 ○ 1851 10c green, type II, black grid cds, margins all around, with 2019 PSE certificate graded "XF 90" (SMQ \$350)(14) 250.00
- 19 ☒ 1851 10c green, type IV, large margins all around, used in combination with perforated 1c blue Type II, both tied by Washington D.C. pmk on large package wrapper to France, wrapper refolded, with some closed tears and reduced at right, with red 1857 arrival pmk, charged "1f20" in red crayon, partly touching the 10c adhesive, scarce usage to France, with 2019 PFC(16,20) 500.00

1857-61 Issue



- 20 ★ 1857 1c blue, type IV, lightly hinged, fresh color, bottom left corner reattached, otherwise fine, rare with original gum, with 2015 PSE certificate, cat. \$10,000(23) 850.00

- 21 (★) 1857 24c gray lilac, unused without gum, nice impression, with 2019 PSE certificate graded "VF 80" (SMQ \$525)(37a) 400.00

1875 Reprints of the 1857-61 Issue

- 22 (★) 1875 1c bright blue, unused without gum as issued, nice color, fine, with 2019 PSE certificate, cat. \$575(40) 350.00



- 23 (★) 1875 24c blackish violet, unused without gum as issued, usual centering, fine, only 479 sold, with 2001 PFC, cat. \$3,000(45) 2,000.00

1861-68 Issues

- 24 E 1861 George Washington complete design, engraved vignette in green (similar to 65-E7A) but with "25869" die, American Bank Note Company imprint and initials in four corners, die sunk on complete card, v.f., rare 250.00
- 25 E 1861 George Washington complete design, engraved vignette in green (similar to 65-E7A) but with "25869" die, American Bank Note Company imprint and initials in four corners, die sunk on complete card, v.f., rare (web photo) 250.00
- 26 E 1861 George Washington vignette only in black, die with V-39242 on india, mounted on full card, v.f. (similar to 65-E6) (web photo) 250.00
- 27 (★) 1861 10c dark blue, unused without gum, fresh color, small tear and short perf., otherwise fine, with 2019 PFC, cat. \$3,600(62B) 650.00
- 28 ☒ 1861 1c blue, 3c rose and 5c buff, tied by concentric circles on cover (slightly reduced at left) from Bloomington, Indiana, June 27, 1865 to New York, minor perf. flaws and other faults, fine combination cover(63,65,67) 250.00
- 29 ☒ 1861 5c buff, two singles tied by cds on cover from California to Newark, minor faults, fine cover, rare franking(67) 500.00
- 30 ☒ 1861 5c buff and 30c orange, used on cover from Louisville, Ky to Switzerland, stamped tied by blue May 62 pmks, with corresponding grids alongside, endorsed "Per French Mail", red New York Paid and French entry markings, transit and Rheinfelden arrival pmks on back, minor toning, scarce franking to uncommon destination(67,71) 500.00



31



32

- 31 ★ 1861 10c dark green, l.h., vivid color and exceptionally well centered with wide margins all around, v.f., with 1997 PFC(68a) 1,000.00
- 32 ○ 1861 24c steel blue, red grid cancel, fairly well centered, v.f., with 2011 PSAG certificate, cat. \$850(70b) 500.00
- 33 ★ 1861 2c black, horizontal pair, unused with paper hinge remnant, well centered, fine-v.f., cat. \$700.(73) 250.00
- 34 ☒ 1863 Soldier's letter from Washington, D.C. to New York, with "Forwarded by the U.S. Sanitary Commission" handstamp on back, appropriate endorsements and departure pmk (web photo) 150.00



28



29



30



33



39



40



44



45



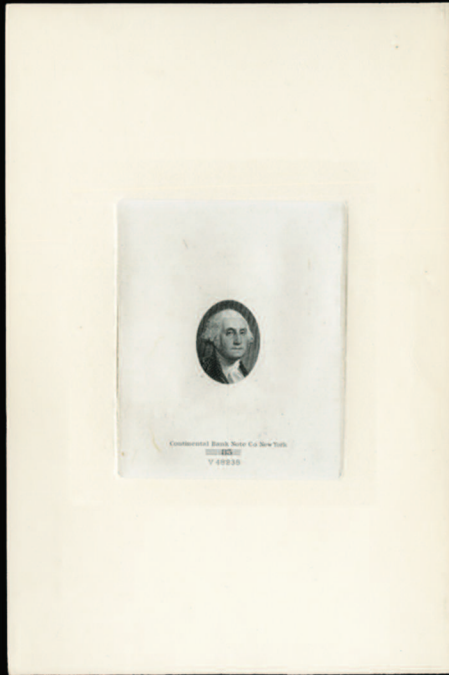
41



49



50



35



54



53



38



55



56

1867 Grill Issue

- 35 E 1867 George Washington vignette only in black, die Continental Bank Note Co., V-48238 die sunk on card, v.f., cat. \$350(79E37b) 250.00
- 36 E 1867 George Washington vignette only in black, Continental Bank Note Co. and "85" at bottom, die sunk on full card, v.f., cat. \$350 (web photo)(79E37b) 250.00



- 37 O 1867 3c rose, Z.Grill, black cancel, well centered for this difficult issue, v.f., with 1964 PFC and 2019 PSE certificate, cat. \$3,250(85C) 2,500.00
- 38 ★★田 1867 E.Grill, 1c blue, block of six, never hinged, centered to right, nice color, impressive multiple (catalogued as hinged pair and block of four) cat. \$26,500(86) 1,500.00
- 39 O 1867 24c gray lilac, F.Grill, Circle of Wedges cancel, well centered, v.f., with 2015 PFC, cat. \$1,500(99) 500.00

1875 Re-Issue of the 1861-66 Issue

- 40 ★★ 1875 1c blue, unused without gum, well centered, with 2017 PFC graded "VF 80" (SMQ \$375) (102) 350.00

1869 Pictorials

- 41 ★★ 1869 3c ultramarine, right margin single, n.h., v.f., with photocopy of a 2018 PSE certificate for a block of six from which this came (catalogue value for hinged) cat. \$225.....(114) 600.00



42



43

- 42 ★ 1869 24c green and violet, h.r., beautiful color, fresh and fine, with 2019 PFC, cat. \$7,500(120) 3,500.00
- 43 ★ 1869 30c ultramarine and carmine, disturbed original gum, fine, with 2019 PFC, cat. \$4,000.....(121) 1,500.00
- 44 O 1869 30c ultramarine and carmine, black cork and red transit cancels, nicely centered, with 2006 PSE certificate graded "VF-XF 85" (SMQ \$900)(121) 650.00
- 45 O 1869 90c carmine and black, used, nice color, thins and perf. faults, fine appearance, cat. \$1,800(122) 200.00

1875 Re-Issue of the 1869 Pictorials



- 46 ★ 1875 15c brown & blue, h.r., large even margins all around, v.f. and beautiful stamp, with 1997 PFC(129) 1,000.00



47

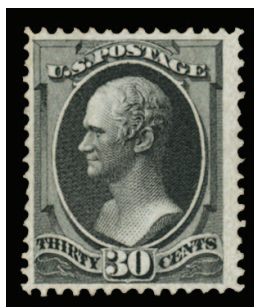


48

- 47 ★ 1875 30c ultramarine and carmine, h.r., well centered, beautiful color, fresh and v.f., only 1,535 issued, with 1975 PFC, cat. \$2,250(131) 1,200.00
- 48 (★) 1875 90c carmine and black, unused without gum, fresh and fine, only 1,356 sold, with 2018 PFC, cat. \$1,500(132) 1,200.00

1870-71 Issue

- 49 ★ 1870 2c red brown, l.h., well centered, v.f., with 1988 and 2005 PFCs, cat. \$1,000(135) 300.00
- 50 (★) 1870 90c carmine, split Grill, unused without gum, with 1974 PFC stating "reperforated at left, a bit soiled, with two repaired spots", cat. \$10,000(144) 500.00



- 51 (★) 1870 30c black, unused without gum, nice color, fine, with 2018 PFC, cat. \$2,600(154) 1,000.00

1879 American Bank Note Company



- 52 P田 1879 30c full black, imperf. proof on gummed paper, block of nine, n.h., v.f.(190P) 500.00

1881-1888 Banknote Issues

- 53 ★ 1881 90c carmine rose, horizontal pair, heavily hinged, bright color, right stamp corner thin, centered to top, cat. \$4,500(191) 250.00

54	E	1881 Garfield vignette, large die on india, card mounted, with American Banknote imprint at bottom, v.f., cat. \$250(205-E2)	150.00
55	E	1881 Liberty vignette in black, large die in black on india, card mounted, with "Bust of Peace", "340" and American Banknote imprint at bottom, v.f., cat. \$350.....(209-E3)	200.00
56	E	1881 Benjamin Franklin vignette in black, large die in black on india, card mounted, with V46852 die and American Banknote imprint at bottom, v.f., rare, cat. \$575.....(209-E4)	400.00
57	E	1881 George Washington vignette in black, large die in black, die sunk on india on full card, with American Banknote imprint at bottom, v.f., cat. \$600(209-E6)	400.00
58	★★	1883 4c blue green, never hinged, rich color, fine, with 2018 PFC, cat. \$800.....(211)	400.00
59	★★	1888 4c carmine, n.h., well centered with wide margins, natural gum wrinkles (not mentioned on accompanying certificate), still v.f., with 2003 PFC, cat. \$525.....(215)	150.00
60	★★	1888 4c carmine, ten singles, n.h. and post office fresh, very good to fine, cat. \$5,250 (web photo)(215)	250.00
61	★★	1888 4c carmine, ten copies (seven singles and a strip of three), n.h. and post office fresh, very good to fine, cat. \$5,250 (web photo).....(215)	250.00
62	★★	1888 4c carmine, ten copies (including three strips of three), n.h. and post office fresh, very good to fine, cat. \$5,250 (web photo)(215)	250.00
63	★★	1888 4c carmine, ten copies (five pairs), n.h. and post office fresh, two with small flaws, others very good to fine, cat. \$5,250 (web photo).....(215)	250.00
64	★	1888 90c purple, h.r., fresh color, fine, with 2014 PSE certificate, cat. \$850(218)	200.00



65	(★)田	1888 90c purple, horizontal sheet margin block of eight, unused without gum, fine and rare multiple (catalogued as singles without gum) cat. \$2,200.....(218)	500.00
66	○	1888 90c purple, used, well centered, with 2018 PFC graded "XF 90" (SMQ \$650)(218)	400.00
67	田	1888 90c purple, horizontal block of six, used with Registry cancels, hinge reinforced and minor perf. flaws, fine-v.f., cat. \$1,950.....(218)	250.00

1890-93 Issue

68	★田	1890 3c purple, top margin plate number and imprint block of ten, all stamps l.h., very slight overall toning, still fine-v.f., with clear 2008 PSE certificate, cat. \$2,750.....(221)	700.00
69	★/★★田	1890 5c yellow brown, top margin imperf. block of four with plate number, top stamps hinged, bottom n.h., v.f. (catalogue value for two hinged pairs) cat. \$450(223P5)	250.00
70	★	1890 90c orange, l.h., bright color, v.f., with 2017 PFC, cat. \$450.....(229)	300.00
71	★★	1890 90c orange, six copies, n.h., fresh and fine, cat. \$8,100 (web photo).....(229)	500.00

1893 Columbian Exposition

72	★★田	1893 2c, 3c and 6c, two different shades of last, all in blocks of four, n.h., fine-v.f., cat. \$1,634.....(231,232,235,235a)	300.00
73	★田	1893 4c ultramarine, bottom margin plate number block of six, three stamps hinged, some marginal perf. reinforcing, fine-v.f., cat. \$950(233)	300.00
74	★★田	1893 6c purple, 6c red violet, distinct shades, blocks of four, h.r., well centered, fine-v.f., cat. \$450(235,235a)	150.00
75	★★田	1893 8c magenta, block of four, n.h., fine-v.f., cat. \$560.....(236)	150.00



57



58



59



64



66



67



68



72



73



69



74



75



78



70



76

76 ★ 1893 15c dark green, bottom margin Plate Number and Imprint strip of four, h.r., fine(239) 250.00



77 ★田 1893 50c slate blue, block of four, h.r., well centered, fine-v.f., cat. \$1,700(240) 500.00

78 ★★田 1893 50c slate blue, two blocks of four, n.h., centered to left, couple of tiny pencil notes and wrinkles, fresh and fine, cat. \$10,000.....(240) 500.00

79 (★) 1893 50c slate blue, three copies unused (regummed), well centered, v.f. (catalogued as unused without gum) cat. \$570 (web photo).....(240) 150.00

80 ★ 1893 \$1 salmon, h.r., fresh color, fine, cat. \$1,000.....(241) 300.00

81 ★(★) 1893 \$1 salmon, six singles, two without gum, also \$2 brown red, h.r., mostly with small faults, fine appearance, cat. \$7,100.....(241,242) 750.00



82 ★★ 1893 \$2 brown red, horizontal pair, n.h., fine, cat. \$7,000.....(242) 750.00



83 ★★ 1893 \$2 brown red, n.h., rich color, fresh and fine, with 2018 PSE certificate, cat. \$3,500(242) 2,000.00

84 (★)田 1893 \$2 brown red, bottom margin imprint block of four, unused (regummed), small faults, fine appearance(242) 350.00

85 ★ 1893 \$3 yellow green, small h.r., bright color, fresh and fine, with 2014 PSE certificate, cat. \$1,350(243) 500.00



86

87

86 ★ 1893 \$3 yellow green, l.h., well centered, v.f., with 2019 PFC, cat. \$1,350.....(243) 1,300.00

87 ★ 1893 \$3 yellow green, l.h., v.f., with 2018 PFC, cat. \$1,350(243) 1,000.00



80



81



85



84



44



90



28

98



99



91



58

100



107



104



101



102



103



103



- 88 ★ 1893 \$4 crimson lake, never hinged, but with tiny inclusions and one translucent spot, well centered, fresh and. v.f. (catalogued as hinged) cat. \$2,000.....(244) 500.00



- 89 ○ 1893 \$4 crimson lake, New York Registry cancel, well centered, with 2019 PFC graded "XF 90" (SMQ \$2,150)(244) 1,500.00
- 90 ★ 1893 \$5 black, hinge disturbed original gum, small faults, fine appearance, cat. \$2,300(245) 350.00

1894-97 Bureau Issues

- 91 ★★田 1894 1c ultramarine, bright ultramarine, blocks of 9 and 12, n.h., fine-v.f., cat. \$1,890(246) 400.00
- 92 ★★田 1894 1c ultramarine, 310 copies, various shades, all in large panes, n.h., there are 28 straight edges (not counted), centered very good to very fine, occasional minor flaws possible, cat. \$25,380 (web photo).....(246) 1,500.00
- 93 ★★田 1894 1c ultramarine, 525+, various shades, all in large panes, n.h. (plus additional straight edges and few minor faults not included in the count), centered very good to very fine, cat. \$47,250 (web photo)(246) 2,500.00
- 94 ★★田 1894 1c ultramarine, bright ultramarine, vertical block of six, also block of nine, n.h., fine-v.f., cat. \$1,350 (web photo).....(246) 250.00
- 95 ★★田 1894 2c pink, 175+, various shades, all in large panes, n.h. (plus additional straight edges and few minor faults not included in the count), centered very good to very fine, cat. \$15,750 (web photo) (248) 2,500.00
- 96 ★田 1894 2c carmine, left imprint and Plate No. block of six, hinge reinforced in the ungummed portion of the selvage, centered to left, very good, scarce plate block, cat. \$2,100 (web photo)(252) 250.00
- 97 (★)田 1894 3c purple, bottom margin plate number block of six, unused without gum, fine-v.f. (catalogue value for hinged) cat. \$1,500(253) 200.00
- 98 ★田 1894 6c dull brown, bottom margin plate number block of six, hinge reinforcing, thins, fine appearance, cat. \$3,250(256) 500.00
- 99 ★田 1894 6c dull brown, 15c dark blue, blocks of four, the former n.h. but dried gum, the latter h.r. with faint toning at top, some unpunched perforations (catalogued as hinged blocks) cat. \$1,850 (256,259) 250.00
- 100 ★田 1894 8c violet brown, bottom margin plate number block of six, top stamps hinged, bottom stamps n.h., right stamps with irregular perforations, otherwise fine, cat. \$2,500(257) 350.00
- 101 ★ 1894 15c dark blue, l.h. (if at all), large margins all around, with 1994 PSE certificate ("genuine unused, o.g. with trace of previous hinging at upper right") and 2003 PFC stating "previously hinged, reperforated at left and bottom", cat. \$275(259) 250.00
- 102 (★) 1894 \$5 green, unused with gum but with some adherence, centered to top, natural inclusion in right margin, brilliant color (catalogued as unused without gum) cat. \$2,100(263) 500.00
- 103 ★★ 1894 15c olive green, dark olive green, four n.h. singles, mostly fine, cat. \$1,900 (web photo) .(284) 300.00
- 104 ★★田 1895 50c orange, block of 12, n.h., natural pre-print wrinkles, mostly through the vertical strip of four, center to left, nice color, very good to fine (catalogued as singles) cat. \$17,100(260) 750.00



113



111



114



109



116



112



1217



120



119



117

950

118



124



125



126



127



130



131

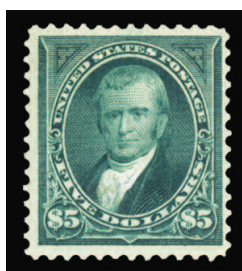


105



106

105	★★田	1895 50c orange, block of four, n.h., bright and fresh color, fine (catalogued as singles) cat. \$5,700(260)	1,000.00
106	★田	1895 \$1 black, type II, block of four with sheet margin at right, hinge remnants, natural gum wrinkles and irregular perfs at bottom, upper left stamp small thin, fine and scarce block, cat. \$9,000(261A)	1,000.00
107	田	1895 \$1 black, type II, used and rejoined block of four, repaired at bottom right, other small faults, rare multiple, cat. \$5,000(261A)	500.00
108	★/★★田	1895 2c carmine, vertical block of 20 with ten horizontal se-tenant pairs Types II+III, hinged at top selvage and at bottom pair, others n.h., fresh, mostly fine, cat. \$5,620 (web photo).....(266,267)	500.00
109	★★	1895 3c purple, 8c violet brown, imperforate horizontal pairs, n.h., v.f.(268,272var)	250.00
110	★/★★	1895 5c (10), 8c (3), 10c and 15c Plate No. Strips of three, with imprint, hinged or n.h., very good to fine, cat. \$5,325 (web photo).....(270,272,273,274)	500.00
111	★★	1895 8c violet brown, top sheet margin single, n.h., v.f., with 2016 PFC, cat. \$210(272)	250.00
112	★田	1895 8c violet brown, top margin plate number block of six, h.r., some perf. separations, fine, cat. \$975(272)	200.00
113	★★	1895 10c dark green, vertical strip of three, n.h., tiny gum disturbances, well centered, fine, cat. \$840(273)	250.00
114	★	1895 \$1 black, type II, h.r., sharp impression, creased at bottom, otherwise fine, with 2014 PSE certificate, cat. \$1,250(276A)	200.00



115	★	1895 \$5 dark green, small h.r, nice color, fresh and fine, with 2019 PFC, cat. \$2,000(278)	1,000.00
116	★田	1897 4c rose brown, top margin plate number block of six, middle stamps with hinge remnants, fine-v.f., cat. \$700(280)	200.00
117	★★	1897 5c dark blue, bottom Plate No., part imprint horizontal pair, n.h., left stamp exceptionally well centered, fine-v.f., cat. \$200(281)	150.00
118	★★	1897 5c dark blue, three bottom Plate No. Imprint horizontal strips of three, n.h., one with marginal spots, otherwise very good to fine, cat. \$1,020(281)	150.00
119	★田	1897 6c lake, top plate number block of six, three stamps l.h., fine-v.f., cat. \$900(282)	250.00
120	★田	1897 10c brown, Type I, 15c olive green, blocks of four, h.r., fine, cat. \$1,400.....(282C,284)	250.00

1898 Trans-Mississippi Exposition

121	★★田	1898 1c green, group of 36 blocks of four (144 stamps), various shades, few arrow, n.h., mostly fine, some fine-v.f., cat. \$10,080 (web photo).....(285)	750.00
-----	-----	---	--------



132



134



136



138



139



143



142



140



144



1600



145



147



148

- 122 ★★田 1898 1c green, group of 50, mostly in blocks of four and six, n.h., mostly fine, few fine-v.f., cat. \$3,500 (web photo).....(285) 250.00



- 123 ★ 1898 \$1 black, very lightly hinged, nicely centered, rich color, with 2014 PSE certificate graded "VF 80" (SMQ \$1,100)(292) 500.00
- 124 ★ 1898 \$1 black, h.r., nicely centered, small faults, v.f. appearance, cat. \$1,500(292) 300.00
- 125 ○ 1898 \$1 black, used, fine, cat. \$700(292) 200.00
- 126 ○ 1898 \$1 black, two used singles, small faults, fine appearance, cat. \$1,400 (web photo).....(292) 250.00
- 127 E 1898 \$2 large die essay (removed from card) in dusky red orange and black, marginal thin spots, fine appearance, cat. \$750.....(293-E7) 250.00



- 128 ★ 1898 \$2 orange brown, heavy h.r., rich color, fresh and fine, with 1989 PFC, cat. \$1,900(293) 600.00

1901 Pan-American Exposition



- 129 P 1901 1c-10c, set of six large die proofs removed from card, marginal faults (mostly thins), otherwise fine-v.f., cat. \$3,450.....(294-299P1) 750.00
- 130 ★/★★田 1901 1c, 4c, 5c and 8c blocks of four, l.h. or n.h. (4c), fine-v.f., cat. \$1,540 (web photo)....(294/298) 250.00
- 131 ★★田 1901 1c green and black, top margin plate number and imprint block of ten, with sideographer's initials, n.h., some light perf. toning at bottom, otherwise fine-v.f.(294) 500.00
- 132 ★★田 1901 1c green and black, bottom margin plate number block of six, n.h., fine-v.f., cat. \$475(294) 150.00
- 133 ★★田 1901 1c green & black, 45 copies (large pane and strips), n.h., five straight edges, fresh, mostly fine, cat. \$1,800 (web photo)(294) 250.00
- 134 ★田 1901 2c carmine and black, bottom corner margin plate number and imprint block of eight with sideographer's initials, and inverted "2c" in corner, h.r., some gum toning, otherwise fine(295) 200.00
- 135 ★★ 1901 2c carmine & black, 12 horizontal pairs with top or bottom imprint and Plate No., some with markers, n.h., fine-v.f., cat. \$900 (web photo)(295) 250.00
- 136 ★★田 1901 2c carmine & black, 44 copies (strip of three, also blocks of four and larger), n.h. and fresh, well centered, fine-v.f., cat. \$1,650.....(295) 250.00
- 137 ★★田 1901 2c carmine & black, 20 copies (pairs and blocks of eight), different shades, n.h., well centered, fine-v.f., cat. \$750 (web photo)(295) 150.00



154



157



159



149



150



152



153



155



160



161



162



163



178



166



167



168

138	★/★★	1901 4c deep red brown and black, two top margin plate number and imprint horizontal strips of three, one n.h., the other with two stamps hinged, pencil notations on reverse, fine-v.f., cat. \$950(296)	200.00
139	★田	1901 4c deep red brown and black, bottom margin plate number block of six, two stamps with disturbed gum, fine-v.f., cat. \$2,000(296)	500.00
140	★★	1901 5c ultramarine and black, n.h., v.f., with 2010 PSE certificate, cat. \$180.....(297)	100.00

1902-08 Issue



141	P	1902 1c-\$5, complete set of 14 small die proofs on page from the Roosevelt Album, 50c with some discoloration, otherwise fine and scarce, only 85 albums were produced, cat. \$4,275.....(300-313P2)	1,000.00
142	★/★★田	1902 4c brown, bottom margin plate number block of six, bottom stamps with small gum disturbance (top stamps n.h.), fine, cat. \$825(303)	200.00
143	★★田	1902 4c brown, bottom imprint and Plate No. block of 12, n.h., post office fresh, very good to fine, cat. \$2,340(303)	250.00
144	★★	1902 5c blue, pale blue, two top Plate No. Imprint strips of three, n.h., fine-v.f., cat. \$1,000(304)	200.00
145	★田	1902 5c blue, left margin plate number block of six, with sideographer's initials at upper left, top stamps hinged (balance n.h.), fine-v.f., cat. \$775(304)	250.00
146	★田	1902 6c claret, bottom plate number block of six, l.h., fine, cat. \$850(305)	150.00
147	★田	1902 6c claret, bottom margin plate number block of six, three stamps hinged, nice color, fine-v.f., cat. \$850(305)	250.00
148	★田	1902 8c violet black, top margin plate number block of six, middle stamps hinged, fine-v.f., cat. \$700(306)	150.00
149	★田	1902 8c violet black, left margin plate number block of six, with sideographer's initials, lightly hinged at top, fine, cat. \$700(306)	200.00
150	★	1902 \$1 black, small h.r., nice color, fresh and fine, with 2014 PSE certificate, cat. \$600(311)	200.00



151	★★	1902 \$1 black, n.h., nicely centered, v.f., with 2001 PFC, cat. \$1,800(311)	800.00
152	★	1902 \$2 dark blue, very fresh, some gum loss due to hinge removal, fine, cat. \$800(312)	150.00
153	★	1908 5c blue, l.h., large margin all around, v.f., with 1999 PFC for a block of four from which this originated, cat. \$300.....(315)	100.00
154	★/★★	1903 5c blue, imperf. vertical pair, h.r. at top, bottom stamp n.h., v.f., cat. \$875.....(315)	250.00

1904 Louisiana-Purchase Exposition

155 ★★ 1904 10c red brown, lower left sheet corner margin horizontal pair, n.h., fine, cat. \$600(327) 150.00



156 ★★田 1904 10c red brown, bottom margin plate number block of four, n.h., fine-v.f., cat. \$2,150.....(327) 750.00

1908-09 Issues

157 ★田 1908 5c (three), 6c, 8c, 10c, 13c, blocks of four, three different shades of 5c, h.r., fine-v.f., cat. \$1,690(335-39) 500.00



158 ★ 1909 50c violet, h.r., beautifully centered, with 2017 PSE certificate graded "XF-Sup 95" (SMQ \$750)(341) 400.00

159 ★★ 1909 5c blue, vertical coil pair, n.h., natural gum wrinkles, fresh and fine, with 2018 PFC, cat. \$850(351) 250.00

1909 Bluish Paper

160 ★田 1909 1c green, bottom margin plate number block of six, h.r., fine-v.f., cat. \$1,100(357) 300.00

161 ★田 1909 1c green, top margin plate number block of six, l.h., fine, cat. \$1,100.....(357) 300.00

162 ★田 1909 2c carmine, right margin plate block of six, l.h., fine-v.f., cat. \$1,650.....(358) 400.00

163 ★ 1909 3c violet, h.r., nicely centered, reperforated at bottom with a tiny thin spot, otherwise v.f., with 1974 PFC, cat. \$1,800(359) 300.00



164



165

164 ★ 1909 3c deep violet, l.h., bright color, fresh and fine, with 2001 PFC, cat. \$1,800.....(359) 900.00

165 ★★ 1909 3c deep violet, right margin part imprint single, n.h. (hinged in selvage), fresh and fine, with 2018 PFC, cat. \$4,000(359) 1,800.00

1909-13 Issues

166 ★★田 1910 6c red orange, top margin plate number and star block of six, n.h., fine, cat. \$700(379) 200.00

167	★田	1910 10c yellow, bottom margin plate number block of six, two bottom stamps l.h. (others n.h.), some separations, fine, cat. \$1,150.....(381)	300.00
168	★/★★田	1910 15c pale ultramarine, block of four, lower right stamp n.h., others h.r., fine-v.f., cat. \$1,175(382)	250.00



169	○	1911 3c deep violet, Type I, Orangeburg coil single, perf. 12 vertically, machine cancel as always, usual centering, tiny colored in scuffs along the top edge and small crease at upper right, otherwise fine example of this rare Coil, with 2019 PSE certificate, cat. \$10,000(389)	3,000.00
-----	---	---	----------

1913-15 Panama-Pacific Exposition

170	★★田	1913 1c green, bottom margin plate number block of six, n.h., fine-v.f., cat. \$450.....(397)	150.00
171	★★田	1913 2c carmine, left margin plate number block of six, n.h., fresh color, fine-v.f., cat. \$625(398)	200.00



172	★★田	1913 10c orange yellow, top margin plate number block of six, n.h., fresh color, marginal pencil notation, fine, cat. \$3,750.....(400)	500.00
173	★/★★田	1914 Perf. 10, 5c blue, block of four with Plate No. at right, bottom stamps n.h., fine-v.f., cat. \$1,050.....(403)	250.00

1914-17 Issues

174	★田	1914 7c (two) 15c and 30c, blocks of four, h.r., fine-v.f., cat. \$1,385 (web photo).....(407,418,420)	300.00
175	★★	1914 7c black, top margin plate number single, n.h., well centered, with 2017 PSE certificate graded "VF 80" (SMQ \$160)(407)	200.00
176	★田	1914 7c black, bottom plate number block of six, h.r., fine-v.f., cat. \$1,200.....(407)	350.00
177	★/★★田	1914 Perf. 12, 9c salmon red, two different shades, also 15c gray, blocks of four, h.r. at top, bottom stamps n.h., fine-v.f., cat. \$1,135.....(415,418)	250.00
178	★★	1914 50c violet, n.h., wide margins, fresh and fine, with 2018 PFC, cat. \$725(421)	400.00
179	★	1914 \$1 violet brown, four copies (originally a block of four), h.r., fine-v.f., cat. \$1,800(423)	500.00
180	★★田	1914 3c deep violet, left Plate No.6751 block of six, n.h., v.f., cat. \$400.....(426)	150.00
181	★★田	1914 3c deep violet, bottom Plate No.6751 block of six, also 30 additional stamps, pairs, blocks of four and larger, n.h., fine, cat. \$1,375 (web photo).....(426)	150.00
182	★★田	1914 12c claret brown, left margin plate number block of six, also 12c copper red, top margin plate number block of six, n.h., fine-v.f., cat. \$1,075.....(435,435a)	250.00
183	★田	1914 15c gray, bottom margin plate number and "A" block of six, top middle stamp hinged (balance n.h.), fine-v.f., cat. \$1,225.....(437)	300.00
184	★★	1914 3c violet, horizontal coil guide line pair, n.h., penciled number on back, fine, cat. \$2,600.(445)	500.00



155



155



155



155



155



155



155



155



155



155



155



155



155



155



185	★★	1914 2c carmine, imperf. horizontal joint line pair, with usual crease, n.h., with 2013 PSE certificate graded "F-VF 75" (SMQ \$600)(459)	500.00
186	★	1915 \$1 violet black, l.h., light pencil notation on reverse, fresh and fine, cat. \$650(460)	250.00
187	★田	1915 2c pale carmine, single and three blocks of four, h.r., seven with straight edges, well centered, fine-v.f., cat. \$1,950(461)	250.00
188	★田	1915 2c pale carmine red, block of four, l.h. at left, right pair n.h., fine, cat. \$950(461)	200.00
189	★★	1916 3c violet, n.h., well centered, with 2008 PSE certificate graded "XF 90" (SMQ \$325)(464)	150.00
190	★★田	1916 Perf.10, 4c orange brown, 9c salmon red, blocks of four, n.h., fine-v.f., cat. \$820(465,471)	150.00
191	★★田	1916 5c blue, bottom margin plate number block of six, n.h., marginal perf. separations, fine, cat. \$1,600(466)	350.00
192	★	1916 5c carmine, middle stamp in a 2c horizontal strip of three, h.r., fine, with 1981 PFC, cat. \$425(467)	100.00



193	★★田	1916 5c carmine, double error in 2c block of twelve, n.h., natural straight edge at bottom, with parts of adjoining stamps on other three sides, n.h., fine-v.f., with 2018 PFC, cat. \$2,900(467)	2,000.00
194	★★田	1916 6c red orange, right Plate No. Block of six, color slightly faded, n.h., fine, cat. \$2,500(468)	300.00
195	★田	1916 Perf. 10, 8c, 9c and 20c, blocks of four, first and last h.r. or n.h., 9c n.h., fine-v.f., cat. \$2,140(470,471,476)	500.00
196	★★田	1916 10c orange yellow, left plate number block of six, n.h., bottom stamps with gum crease, fine, cat. \$2,250(472)	500.00
197	★	1916 50c light violet, l.h., well centered, fresh and v.f., cat. \$850(477)	250.00



189



192



197



200



202



190



7236

191



7136

194



195



6752

196



8016

199



6928

201



203



204



205



- 198 ★/★★田 1916 \$1 violet black, upper left corner margin block of four, left stamps hinged, right stamps n.h., fine (catalogued as singles) cat. \$4,000(478) 750.00
- 199 ★★ 1917 \$2 dark blue, \$5 light green, bottom margin Plate No. strips of three, n.h., irregular perfs, fresh and fine (catalogued as singles) cat. \$2,550(479,480) 500.00
- 200 ★ 1917 \$2 dark blue, h.r., well centered with wide margins, with 2010 PSAG certificate graded "90" (SMQ \$300)(479) 150.00

1917-29 Issues

- 201 ★/★★田 1917 1c-30c, selection of 15 different blocks of four with Plate Numbers, l.h. or n.h., fine-v.f. (catalogued as singles) cat. \$1,349(498/516) 250.00
- 202 ★★ 1917 2c deep rose, type Ia, n.h., fresh color, fine, with 2018 PFC for a block of six from which this came, cat. \$550.....(500) 250.00
- 203 ★★田 1917 2c rose, Type I, right sheet margin block of four, n.h., fine, cat. \$2,200(500) 250.00
- 204 ★田 1917 5c rose (error) vertical pair in block of 12, centered to right, errors n.h., fine, cat. \$1,200 (505) 250.00
- 205 ★★田 1917 5c carmine (error) vertical pair in block of 12, n.h., fine(505) 250.00
- 206 ★★田 1917 15c gray, blocks of four, twelve and fifteen (top five stamps with straight edges), n.h., fine-v.f., cat. \$2,325(514) 300.00
- 207 ★★田 1917 20c light ultramarine, right Plate No. block of six (selvage trimmed), n.h., well centered, fine-v.f., cat. \$1,000(515) 150.00
- 208 ★★田 1917 30c orange red, right margin plate number block of six, n.h., marginal perf. separations, fine, cat. \$925(516) 250.00



- 209 ★田 1917 50c red violet, left margin plate number block of six, upper left stamp l.h., balance n.h., some marginal wrinkles, still fine, cat. \$1,600(517) 500.00
- 210 ★★ 1917 \$1 violet brown, 44 copies, including eleven horizontal strips of three with plate numbers and imprints, one imprint pair and the balance are plate number singles, n.h., occasional gum skips, very good to very fine (catalogue value for singles) cat. \$4,180 (web photo).....(518) 500.00



206



207



208



212



211



213



214



217



218



215



216



219



220



223



224

211	★	1918 \$2 orange red and black, h.r., nicely centered, v.f., cat. \$500(523)	200.00
212	★★	1918 \$2 orange red & black, top margin Plate No. Arrow strip of four, n.h., natural gum wrinkles, slightly oxidized as often, fine (catalogued as singles) cat. \$4,400.....(523)	500.00
213	★★	1918 \$5 green & black, n.h., large even margins all around, v.f. and beautiful stamp(524)	250.00
214	★★	1918 \$5 deep green and black, n.h., well centered, v.f., cat. \$340(524)	150.00
215	★★田	1919 1c gray green, right Plate No. Block of six, n.h., fine-v.f., cat. \$400(536)	150.00
216	★/★★田	1920 Rotary Printing, Perf. 11, 2c carmine rose, three blocks of four, one n.h., others hinged at top, bottom pairs n.h., usual centering, fine (catalogued as singles) cat. \$2,260(546)	250.00
217	★★	1920 \$2 carmine and black, n.h., v.f., cat. \$240.....(547)	100.00
218	★★	1920 \$2 carmine and black, n.h., near perfect centering, v.f., with a photocopy of a 2016 PFC for a block of four from which this came, cat. \$240.....(547)	300.00
219	★★田	1922 6c red orange, right margin plate number block of six, n.h., marginal wrinkles well away from the stamps, fine, cat. \$600.....(558)	150.00
220	★★田	1922 10c orange, top margin plate number block of six, n.h., fine, cat. \$400.....(562)	100.00



221	★	1922 10c orange, vertical pair imperf. horizontally, h.r., usual centering, fresh and fine, with 2008 and 2018 PFCs (catalogue value is for fine) cat. \$2,000(562a)	1,000.00
222	★★田	1922 14c American Indian, 140 copies, mostly large multiples, n.h., centered very good to very fine (also 30 additional copies with straight edges or poorly centered, not counted) cat. \$1,330 (web photo)(565)	200.00
223	★★田	1922 30c olive brown, right margin plate number block of six, n.h., fine-v.f., cat. \$475(569)	150.00
224	★★田	1922 50c lilac, bottom margin plate number block of six, n.h., v.f., cat. \$750(570)	250.00
225	★★田	1922 \$1 violet brown, top margin plate number block of six, n.h., fine-v.f., cat. \$525.....(571)	200.00
226	★田	1922 \$2 deep blue, bottom margin plate number block of six, top middle stamp l.h., balance n.h., v.f., cat. \$700(572)	200.00



227	★★田	1922 \$5 carmine and blue, top margin block of six with plate number, n.h., nice color, v.f. (catalogue value for singles) cat. \$1,080.....(573)	300.00
228	★田	1922 \$5 carmine lake and dark blue, top margin block of four with plate number, h.r., fine-v.f., cat. \$800.....(573a)	200.00



225



226



234



228



229



232



233



238



239



240



241



242



247



258



252



243



251

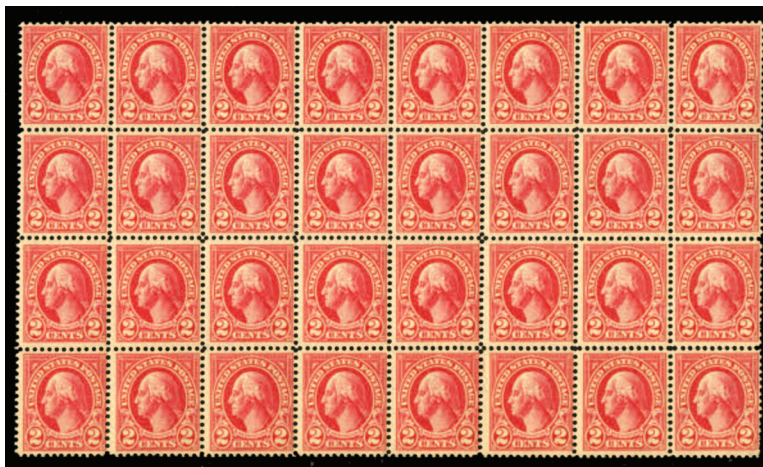
- 229 ★田 1923 1c green, Rotary, perf. 11x10, top margin plate number block of four, top stamps hinged, bottom n.h., upper left stamp with some perf. toning, fine, cat. \$1,100(578) 250.00



- 230 ★/★★田 1923 Rotary Press Printing, Perf. 11x10, 2c carmine, block of 36, four middle stamps h.r., balance n.h., well centered for issue, fine-v.f., cat. \$4,780(579) 1,500.00
- 231 ★★田 1923 Perf.10, 1c-10c blocks of four, n.h., mostly fine, cat. \$1,485 (web photo)(581-91) 150.00
- 232 ★★田 1923 10c orange, corner margin plate number block of four, n.h., fine, cat. \$750(591) 250.00
- 233 ★★田 1923 Harding, 2c black, plate number block of four, n.h., fine, cat. \$500(612) 150.00
- 234 ★★田 1925 Norse-American, 2c carmine & black and 5c dark blue & black, top Plate No. Arrow Blocks of eight, n.h., fine-v.f., cat. \$975(620,621) 200.00
- 235 ★★田 1925 Norse-American, 2c carmine & black, three top Plate No. Arrow Blocks of eight, n.h., fine-v.f., cat. \$925 (web photo)(620) 150.00
- 236 ★★田 1926 White Plains souvenir sheet, n.h., fine-v.f., cat. \$525 (web photo)(630) 150.00
- 237 ★★田 1929 1c-4c Nebraska, five different plate number blocks of four, n.h., fine-v.f., cat. \$985 (web photo)(669-673) 200.00
- 238 ★田 1929 6c Nebraska, plate number block of four, l.h., fine, cat. \$525(675) 150.00
- 239 ★★田 1929 7c Nebraska, plate number block of four, n.h., fine, cat. \$500(676) 150.00
- 240 ★★田 1929 8c Nebraska, plate number block of four, n.h., fine, cat. \$550(677) 150.00
- 241 ★★田 1929 9c Nebraska, plate number block of four, n.h., fine, cat. \$675(678) 200.00
- 242 ★★田 1929 10c Nebraska, plate number block of four, n.h., fine, cat. \$1,150(679) 250.00

1930-79 Issues

- 243 ★★田 1932 Postal Counterfeits, 2c carmine Perf. 11.65, block of 12, n.h., fine-v.f., rare, cat. \$2,700(634 (CF1) 500.00



244 ★★田 1932 Postal Counterfeits, 2c carmine Perf. 11.65, block of 32, n.h., some perf. separations at bottom, fine-v.f., rare multiple, cat. \$7,200.....(634 (CF1)) 1,000.00



245 ★★田 1934 3c Wisconsin, block of four, variety imperf. horizontally, n.h., some natural gum wrinkles, v.f. and rare, with 1935 APS certificate, cat. \$2,200(739a) 500.00

246 ★★田 1938 Presidential Series, ½c-\$5, complete set of plate blocks of four, n.h., fine-v.f., cat. \$670 (web photo).....(803-834) 150.00

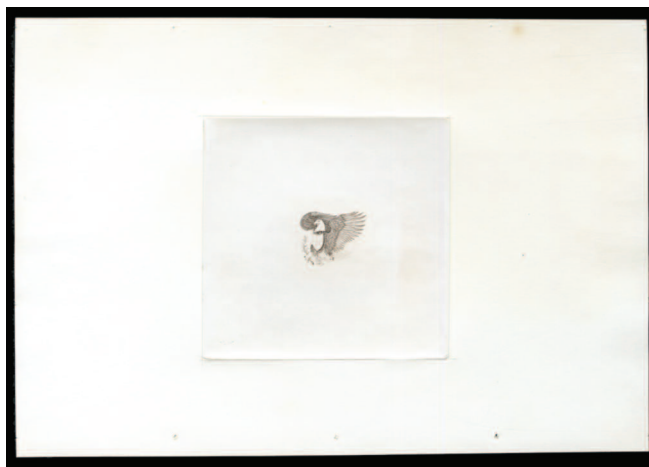
247 ★★ 1956 \$5 Hamilton, n.h., perfectly centered, with 2017 PSE certificate graded "Gem 100" (SMQ \$550)(1056) 300.00

248 ★★田 1953 \$5 Hamilton, ten singles and two Plate No. blocks of four, n.h., fine (web photo).....(1053) 150.00

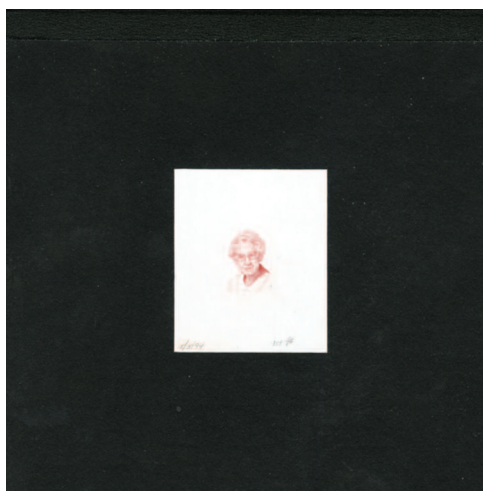
Modern Issues



249 ★★ 1979 \$1 Candle holder, brown (engraved) color inverted, n.h., fresh, v.f. Popularly called the "C.I.A. Invert", a single pane of 100 stamps was purchased at the McLean Va. Post Office by employees of the C.I.A., for use on mail from the agency. They noticed the error, pooled together funds to buy a replacement sheet and kept the pane for themselves. When it was discovered who had purchased the stamps, a scandal ensued over who actually owned the stamps. Of the pane of 100, only 93 sound examples reached collectors(1610c) 15,000.00



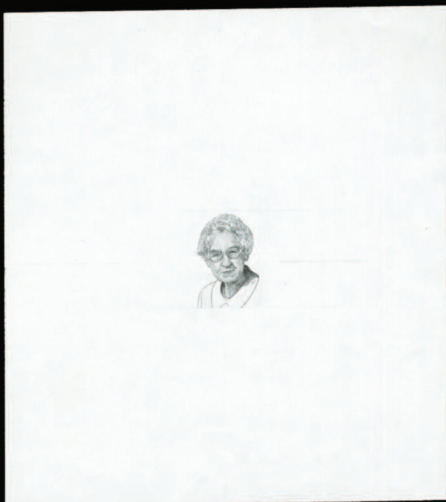
- 250 P 1992 Eagle and Shield only, die proof in brown, die sunk on large card, v.f.(2595P) 500.00
- 251 P 1992 Eagle only, die proof in black, die sunk on large card, v.f.(2595P) 500.00
- 252 P 1992 Eagle only, die proof in black, v.f.(2595P) 500.00



- 253 P 1994 Virginia Apgar, 20c red brown, stage proof of central vignette only, large die proof affixed on card, dated 5/5/94 in pencil at bottom, v.f.(2179P) 500.00
- 254 P 1994 Virginia Apgar, 20c black, large die proof, die sunk on thin card, unusually large format, numerals somewhat unfinished, v.f. (web photo).....(2179P) 500.00
- 255 P 1994 Virginia Apgar, 20c black, stage proof of central vignette only, v.f.(2179P) 500.00
- 256 P 1994 James Polk, 32c red brown, large die proof on gummed paper, dated 7/17/95 "#3" at bottom, scotch tape at top, otherwise v.f.(2587P) 500.00
- 257 P 1995 Milton Hershey, 32c die proof on gummed paper, guide-line markings on all sides, creases and scotch taped on top, fine and undoubtedly very rare(2933P) 500.00

United States Air Post

- 258 ★/★★ 1918-23 complete sets, 6c, 24c Jenny and 16c green n.h., others l.h., fine-v.f., cat. \$502.....(C1-6) 150.00
- 259 ★/★★田 1918-23 6c-24c blocks of four, hinged at top, bottom stamps n.h., fresh and well centered, fine-v.f.(C1-6) 500.00
- 260 ★田 1918 24c carmine & blue, Top Plate No. block of four, plate shifted to left, h.r., fine-v.f.(C3) 250.00
- 261 ★/★★田 1923 8c-24c blocks of four, hinged at top, bottom stamps n.h., fresh and well centered, fine-v.f.(C4-6) 250.00
- 262 ★★田 1927-30 10c booklet pane of three (2) and 50c Century of Progress, block of four with Plate No. at bottom, n.h., v.f., cat. \$530(C10a,C18) 250.00
- 263 ★ 1930 Zeppelin 65c-\$2.60 set of three, n.h. but each with a small thin, well centered, fresh, fine-v.f.(C13-15) 500.00



255



256



257



260



259



261



262



265



269



263



272



273



274



- 264 ★★ 1930 Zeppelin, set of three, n.h., fine-v.f., cat. \$1,640(C13-15) 750.00
- 265 ☒ 1930 Zeppelin set of three, used on card and two covers, various markings, minor cover flaws, fine-v.f.(C13-15) 500.00
- 266 ☒ 1930 Zeppelin 65c (3) and \$1.30 (5), used on six covers of cards, various pmks and destinations, some wear and tear, mostly fine-v.f. (web photo)(C13,14) 500.00



- 267 ★★ 1930 \$2.60 blue, left plate number single, n.h., v.f., with 2017 PFC, cat. \$850.....(C15) 600.00



- 268 ☒ 1930 Zeppelin, \$2.60 blue, used with additional franking on May 5 New York Round-Flight cover, fine-v.f., with appropriate cachet and Lakehurst arrival pmk(C15) 300.00
- 269 ☒ 1930 Zeppelin, \$2.60 blue, used on May 7 New York Round-Flight cover, fine-v.f., with appropriate cachet and Lakehurst arrival pmk, addressee's name obliterated, fine-v.f.(C15) 300.00
- 270 ☒ 1933 Century of Progress, 50c green, 12 copies used on three covers, each with Chicago Flight cachet, two stamps defective, others fine-v.f. (web photo)(C18) 150.00
- 271 ★★田 1937 50c carmine, 15 sheets of 50, n.h., fine-v.f. (counted as singles) cat. \$8,250 (web photo)(C22) 750.00
- 272 ☒ **Flight Covers.** 1934 cover with U.S. and Polish franking, special cachet and signed by both Adamowicz brothers, faint toning, otherwise v.f. On June 28, Benjamin and Joseph Adamowicz took off from Floyd Bennett Field in NYC and landed in Harbour Grace, Newfoundland. The next day, they took off from there for a Trans-Atlantic trip. Through mechanical problems, leaking engine and heavy rainstorm, they managed to reach Europe (near Caen in France). The next day, after repairing a landing gear, they took off to Paris, then to Germany, where they were forced to land due to fuel leaks. On July 2, the brothers arrived in Warsaw, Poland, treated as heroes. The Adamowicz brothers were possibly the first amateur pilots in the world to fly a plane across the Atlantic 150.00

Special Delivery

- 273 ★田 1893 10c orange, bottom margin block of four with plate number, h.r., bright color, upper right stamp thin, otherwise fine-v.f., cat. \$1,250(E3) 350.00
- 274 ★田 1908 10c green, top margin plate number block of six, two stamps hinged, others n.h., fine-v.f., cat. \$1,075(E7) 250.00
- 275 ★田 1908 10c green, right margin plate number block of six, small h.r., minor perf. separations, fine-v.f., cat. \$1,075.....(E7) 250.00
- 276 ★★田 1925 15c deep orange, left margin plate number block of six, n.h., fine-v.f., cat. \$700(E13) 250.00



275



276



278



280



283



284



282



288



290



285



294



295



291

Registration Stamps



- 277 ★田 1911 10c ultramarine, bottom margin plate number block of six, top stamps h.r. (two stamps n.h.), nicely centered, v.f., cat. \$1,800(F1) 500.00

Postage Dues

- 278 ★田 1879 1c, 3c, 5c and 30c (2) blocks of four, l.h. or h.r. except for 5c part paper adhesions and faults, one of the 30c blocks with some gum stains, usual centering (catalogued as singles) cat. \$6,666(J1,3,4,6) 500.00



- 279 ★★ 1894 2c vermilion, top margin single, n.h., with 2013 PSE certificate, cat. \$1,900(J29) 750.00
 280 ★田 1910 1c deep claret, bottom margin plate number and star block of six, middle stamps h.r. (others n.h.), fine-v.f., cat. \$575(J45) 150.00



- 281 ★/★★ 1910 50c deep claret, two vertical pairs (originally a block of four), l.h. at top, bottom stamps n.h., fine-v.f., cat. \$8,000(J50) 1,000.00
 282 ★ 1910 50c deep claret, three singles, mostly l.h., one with small flaws, fine, cat. \$3,300(J50) 500.00

Offices in China

283	★田	1919 2c on 1c green, 4c on 2c rose, right margin plate number blocks of six, both with top two stamps hinged, balance n.h., fine-v.f., cat. \$600(K1-2)	200.00
284	★田	1919 8c on 4c brown, left margin plate number block of six, h.r., fine-v.f., cat. \$675(K4)	200.00
285	★★田	1919 18c on 9c salmon red, left margin plate number block of six, n.h., fine, cat. \$1,200(K9)	300.00



286	★★	1919 \$1 on 50c light violet, top margin plate number single, n.h., nicely centered, fresh and v.f., with 2014 PSE certificate, cat. \$1,250(K15)	500.00
-----	----	---	--------

Official Stamps

287	★/★★田	1873 Post Office, 3c black, sheet of 100, some hinge reinforcements, half of the stamps n.h., some perf. separations, fine-v.f. (web photo)(O49)	500.00
288	○	1873 Department of State, \$2 green & black, used, well centered, small faults, rare, cat. \$3,000(O68)	500.00



289	○	1873 Department of State, \$2 green & black, used horizontal pair, hinge reinforced, right stamp corner thin, rare pair, cat. \$6,000(O68)	750.00
290	★/★★田	1910 Official Postal Savings Stamps, 50c green, blocks of four, two distinct shades, h.r., natural gum wrinkles, fine, cat. \$1,400(O122)	150.00
291	★	1910 Postal Savings, \$1 ultramarine, re-attached block of four, heavy h.r., fine, cat. \$800(O123)	150.00

Newspaper Stamps

292		1865-97 Facsimile handstamps, collection of 130+ mounted on pages, fine-v.f. (web photo)	150.00
293	P田	1875 9c, 60c, 96c, \$3 and \$6, plate proofs on india paper, 9c and \$6 in blocks of eight, others in blocks of six, all with sheet margin and "Continental Bank Note Co" imprints, some marginal thins, otherwise v.f., cat. \$576 (web photo)(P14/26P3)	150.00

Postal Savings Stamps

294	★★田	1940 50c dark blue green, left margin plate number block of six, n.h., fine-v.f., cat. \$1,200(PS9)	300.00
295	★★田	1941 \$5 Minute Man, bottom margin plate number block of six, n.h., v.f., cat. \$475(PS15)	150.00

Parcel Post

296	★★田	1913 1c, 2c and 3c, 45 of each, mostly large panes, with Plate Numbers included, (13 straight edges each), mostly n.h., few minor flaws, fine-v.f. (catalogued as singles, without premium for Plate Blocks) cat. \$1,940 (web photo).....(Q1-3)	250.00
-----	-----	--	--------

297 ★田	1913 4c carmine rose, bottom margin plate number and imprint block of six, l.h., fine-v.f., cat. \$1,000(Q4)	300.00
298 ★★田	1913 4c carmine rose, top margin plate number block of six, n.h., natural gum creases, fine-v.f., cat. \$1,600(Q4)	500.00
299 ★★田	1913 5c carmine rose, left margin plate number block of six, n.h., fine-v.f., cat. \$1,550(Q5)	500.00
300 ★★田	1913 5c carmine rose, left margin plate number block of six, n.h., fresh and fine, cat. \$1,550(Q5)	500.00
301 ★田	1913 25c carmine rose, left margin plate number block of six, one stamp with sealed tear, other five n.h., fine-v.f., cat. \$2,450.....(Q9)	300.00

Parcel Post Postage Dues

302 ★田	1913 1c dark green, bottom margin plate number block of six, bottom stamps with some marginal hinge reinforcing (top stamps n.h.), nicely centered, v.f., cat. \$450(JQ1)	150.00
303 ★★田	1913 1c and 5c dark green, 20 of each, singles and blocks of four, n.h., fine-v.f., cat. \$850 (web photo).....(JQ1,3)	150.00
304 ★★田	1913 5c dark green, left margin plate number block of six, n.h., fine, cat. \$775(JQ3)	200.00

Special Handling Stamps

305 ★田	1925 25c deep green, 25c yellow green, right and bottom margin plate number blocks of six, each with two stamps l.h. (balance n.h.), fine-v.f., cat. \$600(QE4,QE4a)	150.00
--------	--	--------

Locals



306 E	1844 American Letter Mail Co., 5c black ("20 for a dollar"), large die on india, mounted on full card, v.f., rare, cat. \$3,500(5L1P)	2,000.00
-------	---	----------

Revenue Stamps



307 ○	1863 Mortgage, \$25 red, imperf. single, ms cancel, margins all around, rare in such condition, with 2019 PSE certificate graded "XF 90" (unpriced in SMQ) cat. \$3,000(R100a)	2,500.00
-------	--	----------



297



298



299



300



301



302



304



305



308



310



311



312



313



314



316



317



315

- 308 S **Telegraph Stamps.** 1931 Western Union Telegraph Company booklet, with 8 panes of 6x5c and 5 panes of 5x25c, each stamp with security punch, blue front cover overprinted "Specimen", minor toning, fine-v.f. 250.00

Playing Cards

- 309 P 1894-1940 five different die proofs including RF2, "Class A", 1c, 5c and 7c, card mounted, also four additional hybrid essays including "American Exchange National Bank", Eagle and Liberty (2), fine-v.f. (web photo)..... 250.00

Revenue Stamped Paper

- 310 E 1865-75 2c Washington, five embossed essays, in blue, green, dark green, purple and brown, fine-v.f. 500.00
- 311 E 1865-75 2c Washington, embossed die essay in blue, also folded Treasury Department Office of Internal Revenue 1864 official circular, fine 150.00

Private Die and Proprietary

- 312 P 1862 three different proofs, with 4c Brown's Bronchial Troches, 4c Drake's Plantation Bitters (affixed on card), and 1c Schenk's Mandrake Pills, fine-v.f. 200.00
- 313 P 1862 twelve different proofs, including J.E. Hetherington, four 2c large die trial color proofs in different colors (green, brown, orange and black, Scott RS120TC1), also a 2c plate proof in black; Holloway's Pills and Ointment, 1c horizontal pair in dark blue, Home Bitters Co 4c blue; Hop Bitters 4c proof in black, block of four; Perry Davis & Son 1c blue (faint thin), fine-v.f. 500.00
- 314 P 1862 Hop Bitters Co., four different large die, die sunk on card trial color proofs, in blue, green, orange and brown, fine-v.f., cat. 1,325(RS131TC1a) 250.00
- 315 E 1870 Lincoln Sniff, large die essay in black, inscribed "Pub. By E.H. Sauer Manna St Cor.White Plains Road, Van Nest N.Y.C.", v.f., rare 250.00

Duck Hunting Permit Stamps

- 316 ★★田 1952 \$2 Harlequin Ducks, bottom corner margin plate number block of six, n.h., v.f., cat. \$550(RW19) 150.00

American Banknote Co. Proofs

- 317 E 1879 Washington, three essays with "ABNC" in corners, two small dies (in brown and red) and one on card, fine-v.f. 100.00
- 318 E 1947 presentation booklet containing seven different die proofs, each inscribed "Specimen" with designs for Liberty (1c), Communication (25c), Education (3c), Rembrandt (5c), Aviation (2c), Justice (3c) and Taj Mahal (5c), v.f. (web photo)..... 300.00
- 319 E 1950 Columbian Bank Note Company, unexploded booklet with 23 diff. Washington engravings, with front cover indicating "Specimen Border Colors Steel Engraved Securities", black covers, v.f. and rare (web photo) 500.00

CONFEDERATE STATES OF AMERICA

- 320 ★★田 1863 10c deep blue, complete uncut sheet of 200, with Keatinge & Ball Bank Note Engravers Columbia S.C. No.4 imprint at bottom, folded between stamps in gutter, two stamps defective at upper left, some marginal tears at bottom, usual overall toning, impressive sheet (catalogued as 10 gutter pairs and 180 singles) cat. \$5,030 (web photo).....(12) 1,500.00

UNITED STATES POSSESSIONS

CANAL ZONE

- 321 田 1924 1c green (4) and 2c carmine (1) booklet panes of six, h.r. at top, also front cover of the booklet, fine-v.f., cat. \$495 (web photo).....(71e,84d) 150.00
- 322 ★/★★田 1925-41 1c/\$1 overprints, selection of ten blocks of four, l.h. or n.h., last one with usual dried gum, fine-v.f., cat. \$2,264 (web photo).....(87/103) 500.00

GUAM

- 323 田 1924-38 also Hawaii, American Samoa and Danish West Indies, single correspondence of 10 registered covers to Trieste, Italy, two each from Guam, Hawaii, Samoa and St. Thomas and St. Croix, also one from Charlotte Amelie and from Juneau, Alaska, all with attractive frankings, U.S. commemoratives and regular issues, mostly registered or flown, also a 1953 cover from Canton Island, some minor wear, otherwise fine and attractive group (web photo) 500.00

HAWAII

- 324 ○ 1864-86 issues complete to \$1 used, occasional small perf. flaws, mostly fine, cat. \$745 (web photo).....(30-49) 150.00



- 325 ★★田 **Officials.** 1896 2c-25c, set of six in bottom sheet margin blocks of four (2c in a block of six), n.h., fine-v.f. (catalogue value for singles) cat. \$3,160(O1-6) 750.00

PHILIPPINES

- 326 ★田 1903-04 \$2 dark blue, block of four with straight edge at right, h.r., bright color, very good to fine, only 695 overprinted stamps were sold, cat. \$3,000(238) 500.00



- 327 ★田 1903-04 \$2 dark blue, top part imprint and plate no.1630 block of six with wide selvage, hinge remnant at top and in the middle two stamps, four outer stamps n.h., deep rich color, fine centering, very rare (catalogued as hinged and never hinged singles). Only 695 overprinted stamps were sold, meaning that only a few plate blocks and part imprint blocks are known, cat. \$7,100.....(238) 1,500.00

- 328 ★田 1903-04 \$5 dark green, block of four with straight edge at right, h.r., fresh color, fine. Only 746 overprinted stamps were sold, cat. \$3,750(239) 750.00

END OF THE FIRST SESSION