

AUCTION SALE

THURSDAY, OCTOBER 3, 2019

AT 1:00 P.M.

United States

Postmasters' Provisionals - Providence, R.I.



2001 ★★田

1846 5c and 10c gray black, se-tenant sheet of 12 with upper right stamp being 10c, unused with full original gum, h.r. at top and bottom, fresh, v.f., cat. \$5,500.....(10X1-2)

2,500.00

1851-57 Issue



- 2002 ★/★田 1851 3c dull red, Plate 1, complete imperforate sheet of 100, hinge marks at top and bottom, most of the stamps are n.h, unfortunately extensive creasing and additional faults, slightly trimmed into seven stamps at left, marginal imprint intact but hinge reinforced, presentable and scarce complete sheet (last offered at a 1979 Siegel Rarity Sale, lot 39, described as only one known Plate 1 sheet, hammer \$10,000)(catalogued as blocks of four, no premium added for Plate No. Block or varieties) cat. \$52,500(11)

7,500.00

1857-61 Issue



2003 ★/★★田 1857 3c dull red, sheet of 100, hinge reinforcements affect about 25 stamps, horizontal creases through 4th and 7th rows, some additional thins at right, many of the stamps are fresh and n.h., marginal imprint mostly intact, some perf. separations and strengthening, presentable and scarce complete sheet (catalogued as blocks of four) cat. \$11,250.....(26) 5,000.00

1881-1888 Banknote Issues



- 2004 ★/★★田 1887 3c vermilion, sheet of 100, with Plate No. 121 at top and at bottom, hinge reinforcements affect six stamps, another five with thin spots, others n.h., perf. separations, but Plate Blocks intact, some double perfs at top, fine-v.f., rare sheet, cat. \$19,180(214) 4,000.00

1893 Columbian Exposition



- 2005 ★/★★田 1893 1c blue, top margin Plate No. 160 and letters "O O" sheet of 50, bottom left stamp defective, other stamps n.h., but with some gum disturbances affecting the middle strip of five, marginal separations at right, mostly fine(230)

500.00

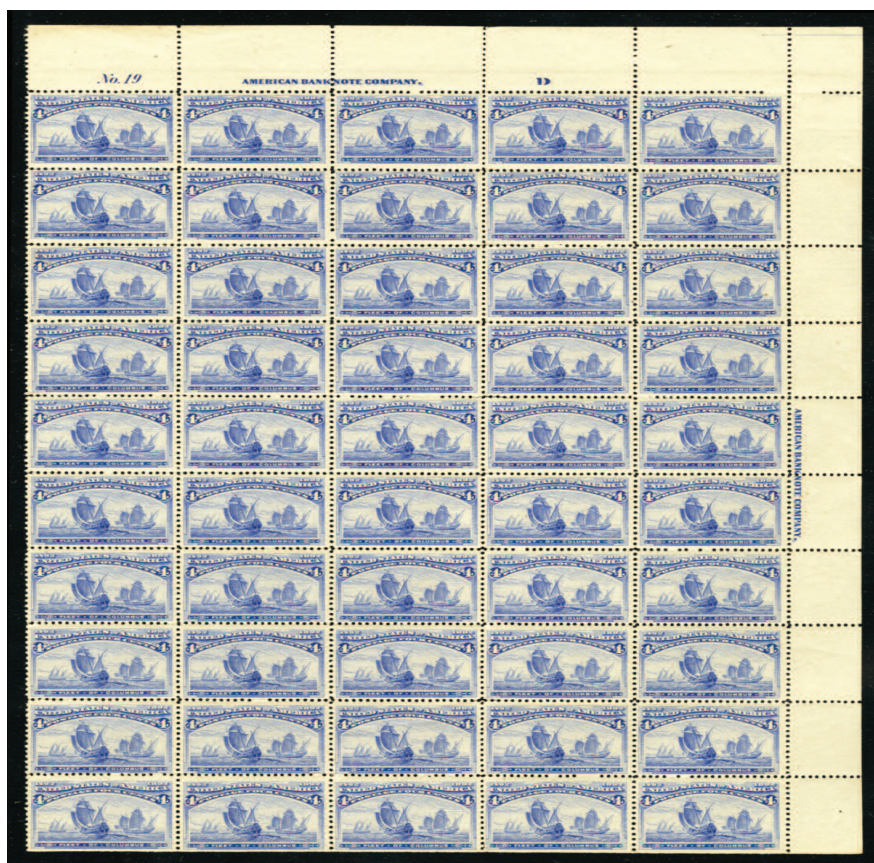


- 2006 ★/★★田 1893 2c brown violet, upper right sheet margin pane of 50, Plate No.86, straight edge at bottom, some hinge reinforcements and perf. strengthening, most stamps showing "Broken Hat" variety, majority n.h., somewhat toned and disturbed gum, well centered and fine-v.f.(231)

500.00



- 2007 ★★田 1893 3c green, sheet of 100, with Plate Numbers 56 at bottom, mostly separated in the middle, n.h., few minor toned spots, centering very good to very fine, cat. \$12,190(232) 2,500.00



- 2008 ★★田 1893 4c ultramarine, upper right sheet margin pane of 50, Plate No.19, straight edge at bottom, folded between stamps, few minor perf. separations and tiny inclusions, n.h., fresh and mostly fine-v.f., cat. \$8,800(233) 2,500.00



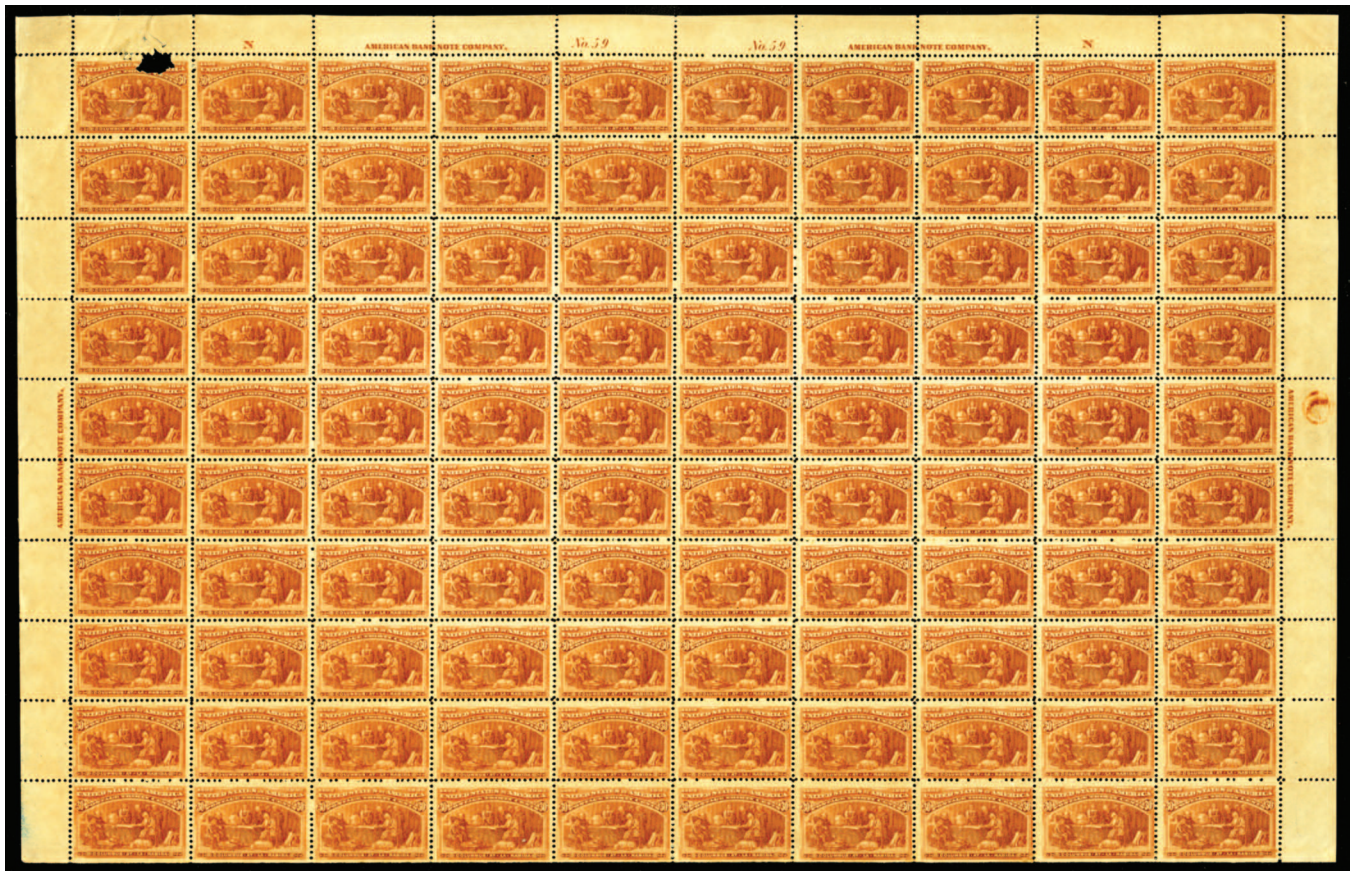
- 2009 ★/★★田 1893 6c purple, lower left margin pane of 50, Plate No.104, straight edge at top, folded between stamps, some hinge reinforcements affecting about 10 stamps, balance n.h., gum toning affects half of the stamps including plate block at bottom, otherwise mostly fine, cat. \$8,080.....(235) 500.00



- 2010 ★/★★田 1893 6c purple, lower right margin pane of 50, Plate No.104, straight edge at top, folded between stamps, some hinge reinforcements affecting about 10 stamps, balance n.h., gum toning (showing through at bottom) affects half of the stamps including plate block at bottom, otherwise mostly fine, cat. \$8,080(235) 500.00



- 2011 ★/★★田 1893 15c green, sheet of 100, with Plate Numbers 58 at bottom, hinge reinforced at top and between eight and ninth horizontal rows, numerous perf. separations, still more or less intact sheet, centering runs from very good to very fine (catalogued as 18 hinged stamps and plate blocks, balance as never hinged singles) cat. \$54,200.....(238) 7,500.00



- 2012 ★/★★田 1893 30c orange, sheet of 100, with Plate No. 59, folded vertically in the middle, plate blocks intact, tiny and virtually invisible reinforcements along the bottom row and in the ungummed portion of the top selvage, upper left stamp defective, balance n.h. (except the bottom stamps), fresh, many well centered including the top plate blocks, imprint and letter "N", fine-v.f., cat. \$85,520(239) 20,000.00



- 2013 ★田 1893 50c slate blue, block of four, h.r. at top, bottom pair l.h., fresh, fine-v.f., cat. \$1,750(240) 500.00



- 2014 ★田 1893 50c slate blue, sheet of 100, with bottom Plate No.77, original but disturbed and toned gum, some showing through, remarkably well centered, mostly fine-v.f., rare intact sheet (last offered in a January, 1978 Sotheby Parke Bernet Stamp Auction where it was described as "aged Original Gum, some showing through on face, never hinged", hammer price \$23,000)(240) 15,000.00



- 2015 ★田 1893 \$1 salmon, block of four, h.r., well centered, fine-v.f., cat. \$4,500(241) 1,500.00



2016 ★田 1893 \$2 brown red, block of four, l.h. and fresh, fine, cat. \$4,600(242) 1,500.00



2017 ★田 1893 \$3 yellow green, block of four, h.r., bottom pair slightly creased, fresh colors, fine-v.f. and scarce block, cat. \$8,250(243) 1,500.00



- 2018 ★田 1893 \$4 crimson lake, block of four, h.r., faint thin at upper right, fresh colors, fine-v.f. and scarce block, cat. \$10,000(244) 2,500.00



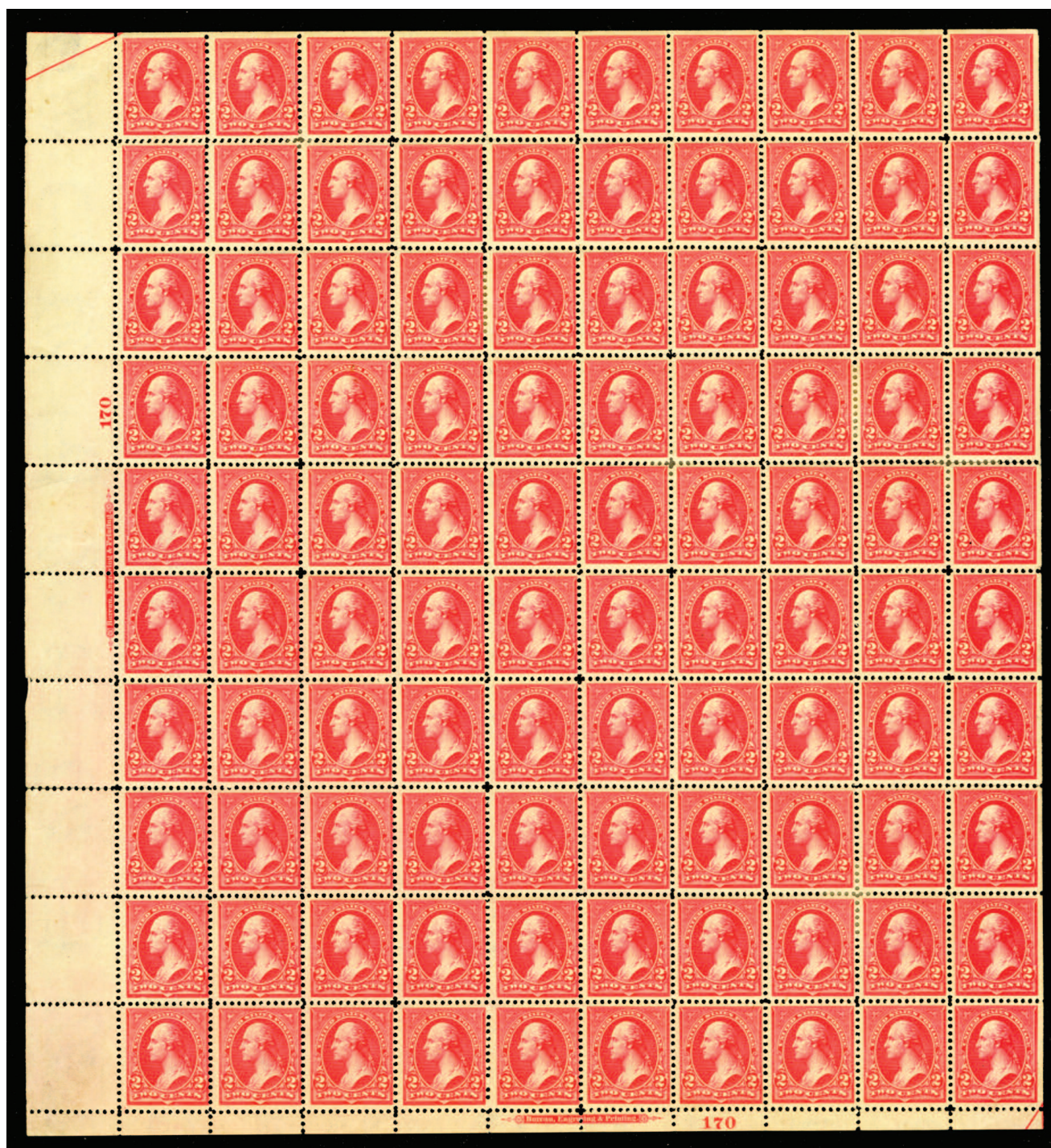
- 2019 ★田 1893 \$5 black, block of four, h.r., deep intense color, well centered, fine-v.f. and scarce block, cat. \$11,500(245) 5,000.00

1894-97 Bureau Issues



2020 ★/★★田 1895 1c blue, sheet of 100, with Plate No.298 at bottom and at left, hinge marks on about 20 stamps (affecting both plate blocks), others n.h., occasional perf. separations, mostly fine-v.f. (264)

500.00



2021 ★/★★田 1895 2c carmine, Type II+III, sheet of 100, with Plate No.170 at bottom and at left, many se-tenant pairs types II+III, hinge marks or remnants on about 20 stamps (affecting both plate blocks), others n.h., perf. separations, mostly fine-v.f.(266-267)

500.00

1898 Trans-Mississippi Exposition



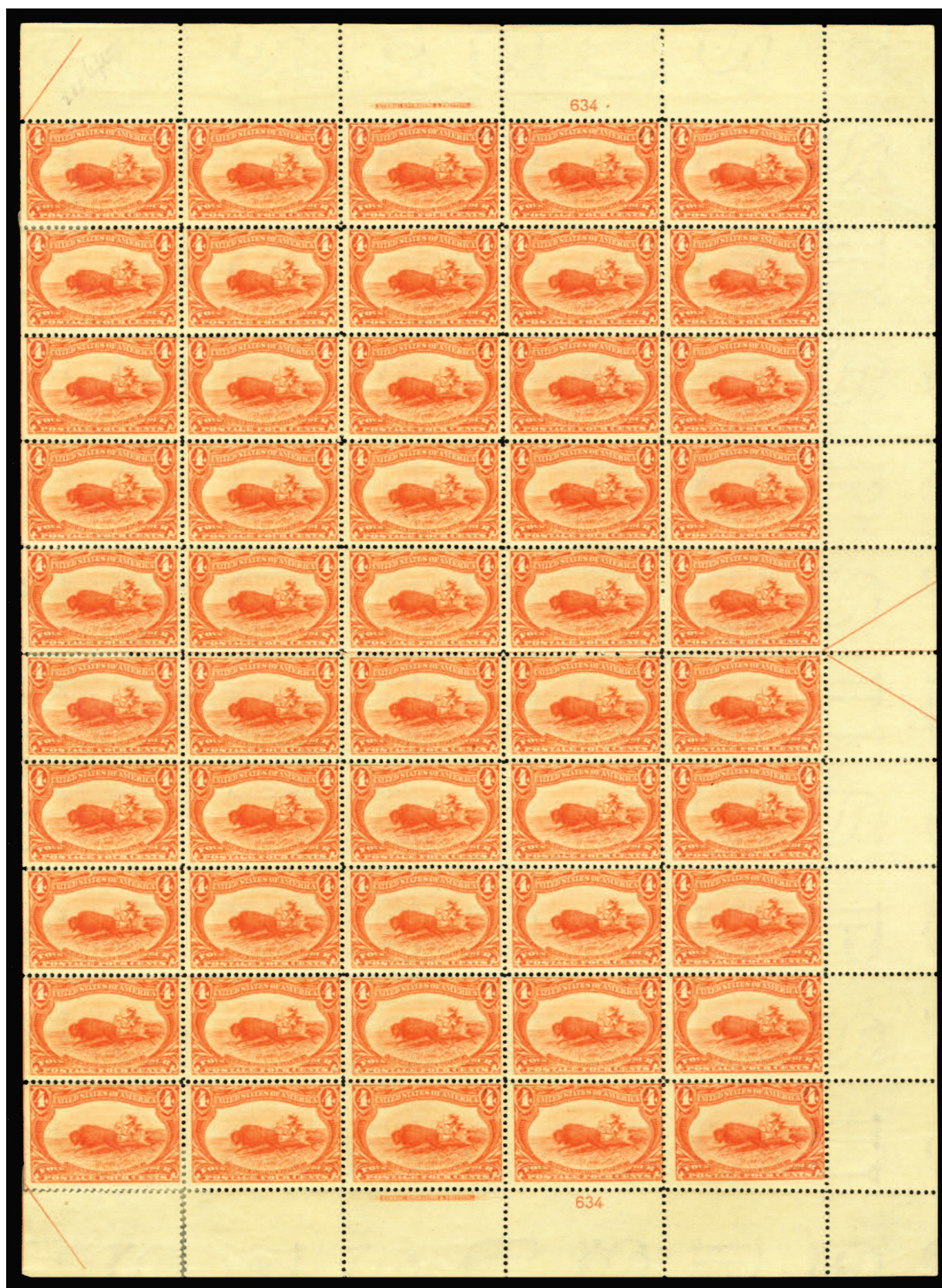
2022 ★/★★田 1898 1c green, sheet of 50, with Plate No. 635 at top and bottom, hinge reinforcements along the vertical row at right and at bottom selvage, balance (40 stamps) n.h., fine or better, cat. \$3,510
.....(285)

500.00



2023 ★★田 1898 2c copper red, sheet of 50, with Plate No.718 at top and bottom, n.h., small nick at left affecting one stamp, also pencil marking and small piece of selvage missing at right, mostly fine, cat. \$4,480(286)

500.00



2024 ★/★★田 1898 4c orange, right margin sheet of 50, top and bottom imprint and Plate No.634 blocks of six, some hinge reinforcements at left affect six stamps (detached selvage reinforced at bottom left), others including both Plate Blocks are n.h., couple of natural inclusion specks, incredibly fresh and fine sheet, cat. \$15,900(287) 2,500.00



2025 ★★田 1898 5c dull blue, left sheet of 50, with top and bottom Imprint and Plate No.618, eight stamps affected by minor hinge reinforcements (mostly at right), also marginal hinges at bottom and at left (slightly nicked at bottom left), rest of the stamps n.h. (bottom plate block counted as stamps only), overall fine-v.f. sheet, cat. \$12,970(288) 2,500.00



2026 ★★田

1898 8c violet brown, right sheet of 50, top and bottom Imprint and Plate No. 643, n.h. and post office fresh, very good to fine, scarce sheet, cat. \$24,125(289)

5,000.00



2027 ★/★/田 1898 10c gray violet, right sheet of 50, top and bottom imprint Plate No. 617, both blocks n.h., selvage hinge reinforced in places, four stamps hinged, three thin, pencil notations at bottom, mostly fine, scarce sheet, cat. \$24,700.....(290) 5,000.00



- 2028 ★田 1898 50c sage green, horizontal guide-line block of four, h.r., faint creasing through the right pair, fine block, cat. \$2,500(291) 500.00



- 2029 ★田 1898 \$1 black, block of four, h.r., well centered, minute thin speck at upper left, fresh, fine-v.f., cat. \$6,500(292) 2,000.00



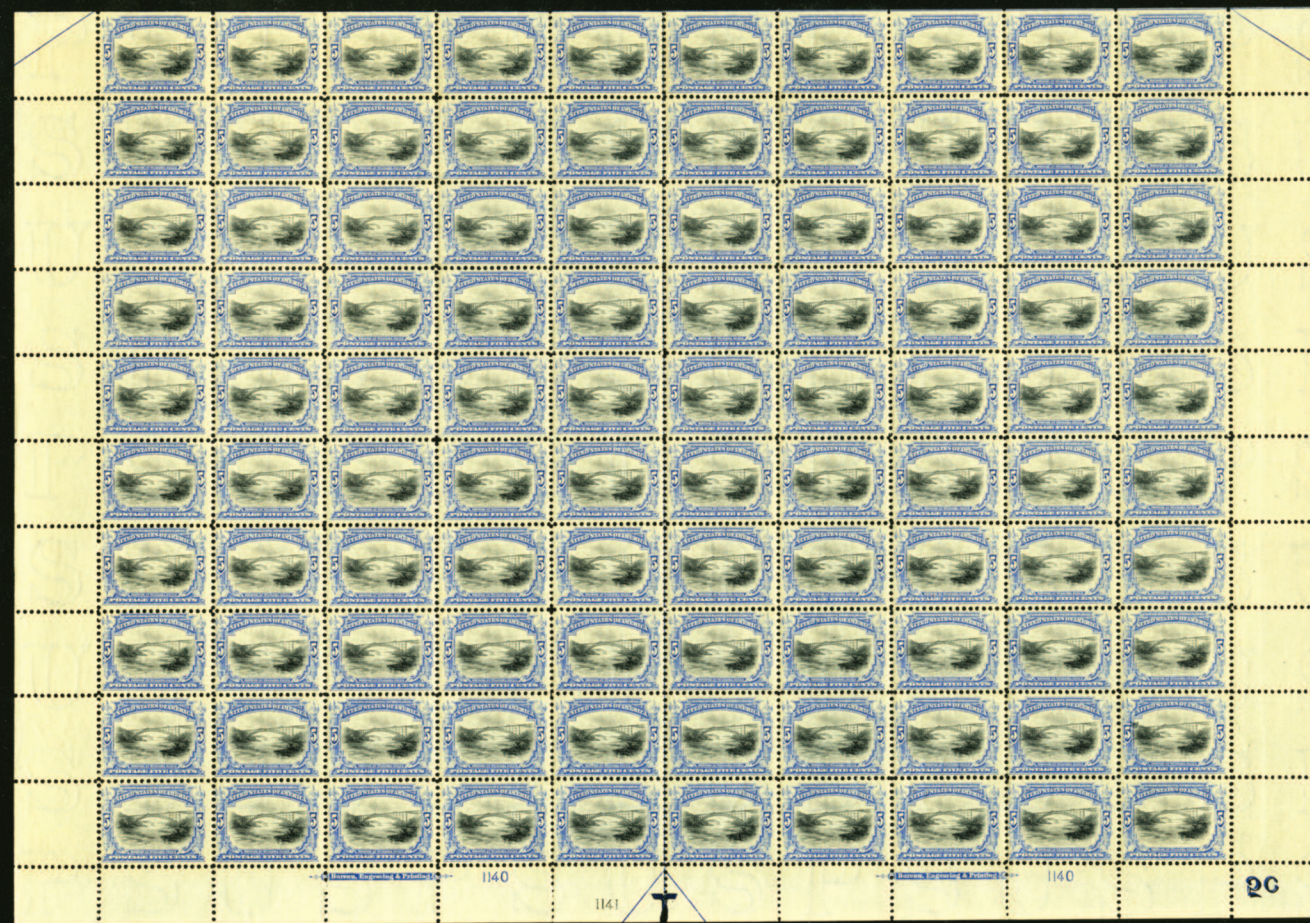
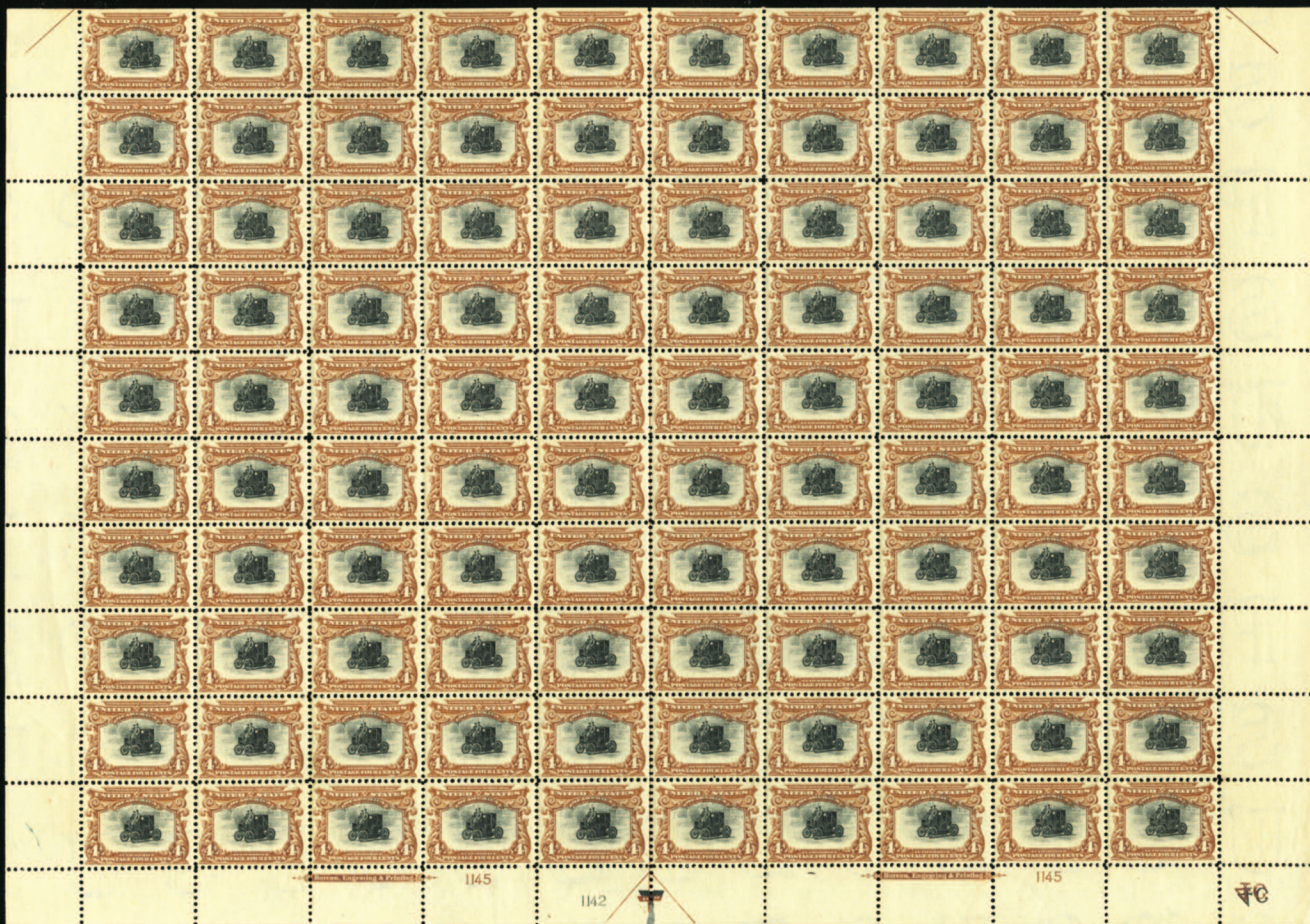
One of Only Three Sheets Still in Existence

- 2030 ★★田 \$1 black, complete right pane of 50 including Top and Bottom Imprint & Plate No. 606 Blocks of Six, sensibly hinge reinforced around edges and some strengthened separations (neither involve the Plate No. Blocks), vast majority n.h., three stamps in plate blocks have trivial thins (one a tiny speck), one stamp in arrow block has a small thin, centering varies from very good-very fine. There are only three complete panes of this stamp known, the second is reported to also have thins, the condition of the third is unknown. A spectacular classic rarity whose design is considered by many to be the most beautiful ever produced for a U.S. Postage Stamp (last offered in a Siegel rarity sale in 1988, hammer \$105,000) cat. \$316,200(292) 100,000.00



- 2031 ★田 \$2 orange brown, block of four, minor h.r., lower left stamp l.h., fresh color, fine-v.f., rare block, cat. \$7,500(293) 2,500.00







1901 Pan-American Exposition

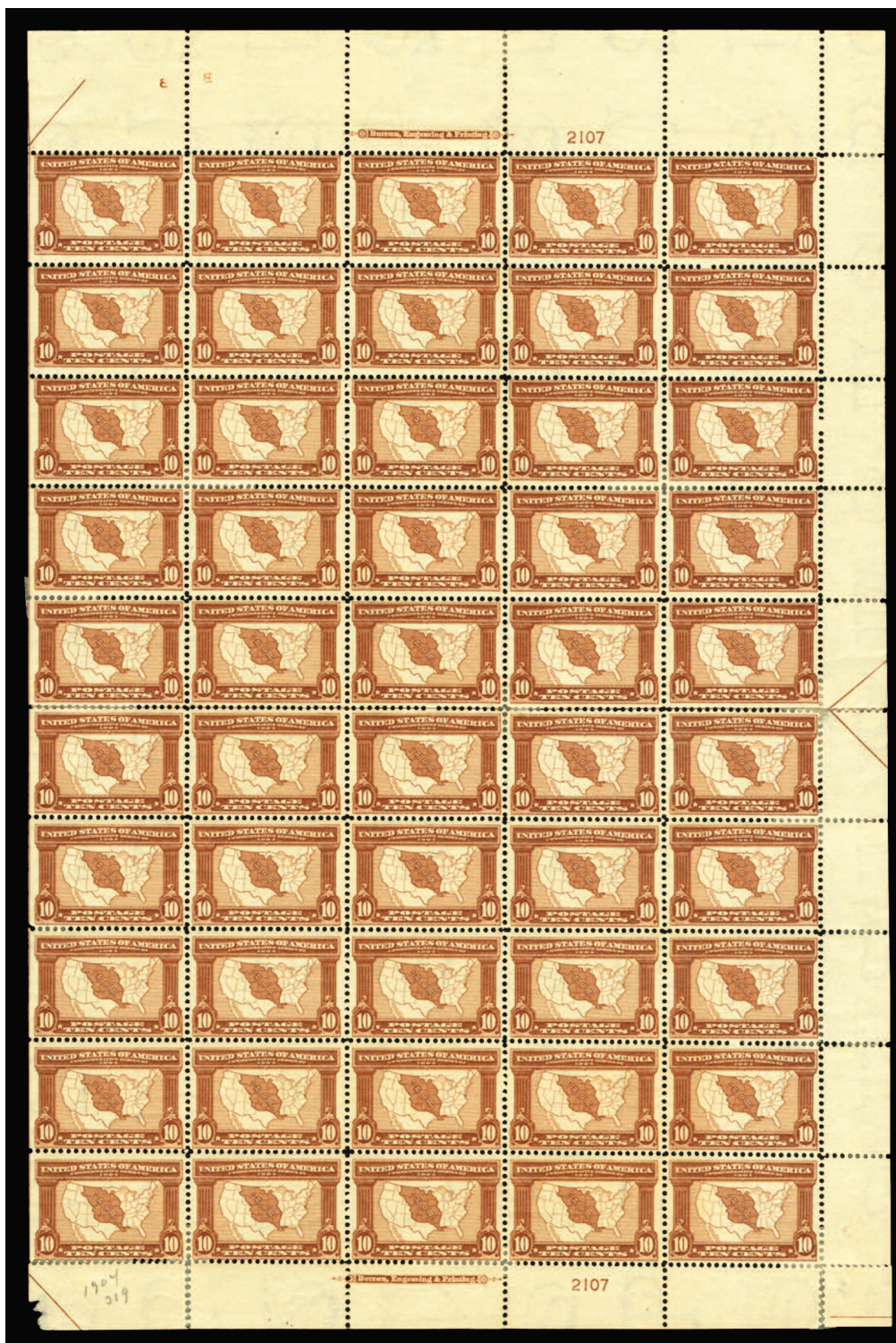
- 2032 ★★田 1c-10c complete set in sheets of 100, 1c and 10c tops, others bottom positions, condition is as follows: 1c n.h., but some of the bottom stamps with dried disturbed gum, 2c all n.h., 4c n.h., but few dried disturbed gum at bottom, also hinge reinforced at Arrow, 5c n.h., but few dried disturbed gum spots, 8c n.h. except 10 stamps affected by hinge reinforcements, including at Arrow, also 20+ others with dried disturbed gum, 10c half of the stamps affected by hinge reinforcements or dried disturbed gum, well centered, folded between stamps, with numerous separations, Plate Blocks appear intact (all catalogued as hinged), fine-v.f., undoubtedly rare set of sheets (catalogued as half hinged singles and plate blocks, rest as never hinged singles) cat. \$94,528(294-99) 25,000.00

1902-03 Issue

- 2033 ★★田 1903 1c green, imperforate sheet of 100, Plate No. 3364 at top and left, n.h., even toning at outer selva at top, fresh and v.f. sheet, cat. \$3,290.....(314) 500.00



1904 Louisiana-Purchase Exposition



- 2034 ★/★★田 1c-10c complete set in panes of 50, imprint and plate nos. at top and bottom, full arrows at left or right, natural straight edge other sides, wonderfully fresh colors throughout, condition notes as follows: 1c and 2c, each with two stamps hinged at bottom, 3c with one stamp hinged at bottom, small thin at upper right (away from the plate block), 5c with l.h. at bottom left and perf. separations affecting plate block, 10c with 28 stamps hinged, extensive perf. separations (affecting top plate block, bottom plate block h.r.), fine-v.f., rare set of sheets of the 1904 Louisiana Purchase (due to the demand for plate blocks and well centered singles, most panes have been broken up), cat. \$40,000+(323-27)

7,500.00

1907 Jamestown Exposition



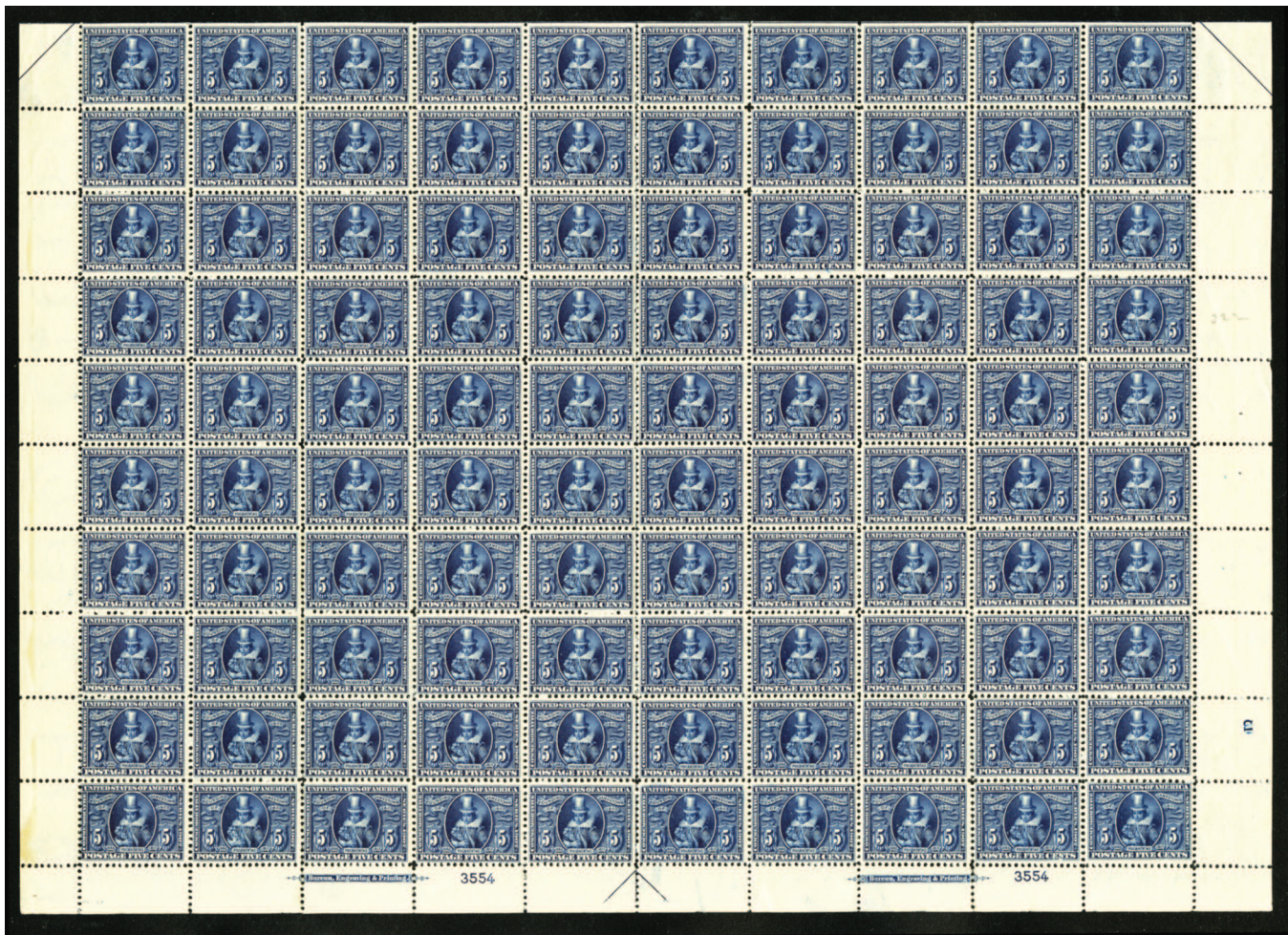
- 2035 ★/★★田 1c green, sheet of 100, with two bottom Plate No. 3540 blocks, left selvage missing, mostly detached at right, tiny hinge reinforcements at top, other stamps n.h., perf. separations, mostly very good to fine, cat. \$6,970.....(328)

750.00



- 2036 ★/★★田 2c carmine, sheet of 100, with two top Plate No. 3522 blocks, right selvage and most of the left margin missing, tiny hinge reinforcements at bottom row of ten, other stamps n.h., some perf. separations, mostly fine or better, cat. \$7,925.....(329)

1,000.00



2037 ★★田

1907 5c blue, sheet of 100, with two Plate No. 3554 blocks, couple of insignificant marginal thins away from the stamps which are all never hinged, extensive separations, also through the plate blocks, well centered for issue, many fine-v.f., cat. \$38,780(330)

5,000.00

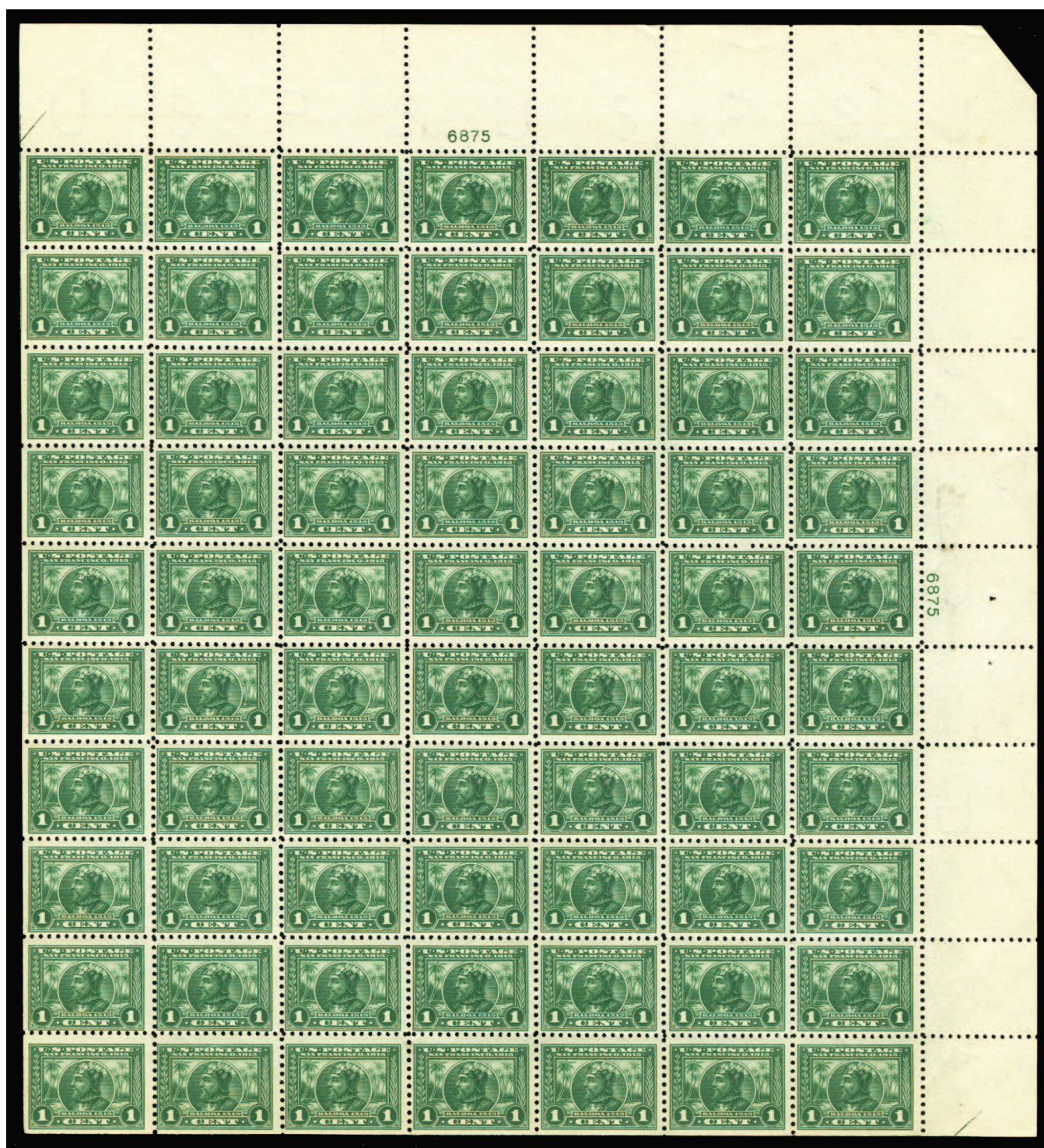
1913-15 Panama-Pacific Exposition



2038 ★★田 1913 1c green, 2c carmine, bottom panes of 70, n.h., the latter with selvage at right (only one plate block at bottom), top left 1c single small tear, others fine-v.f., cat. \$5,795(397,398) 1,200.00



2039 ★★田 1913 10c orange yellow, top Plate No. 6130 pane of 70, n.h., fine, cat. \$22,000(400) 2,500.00

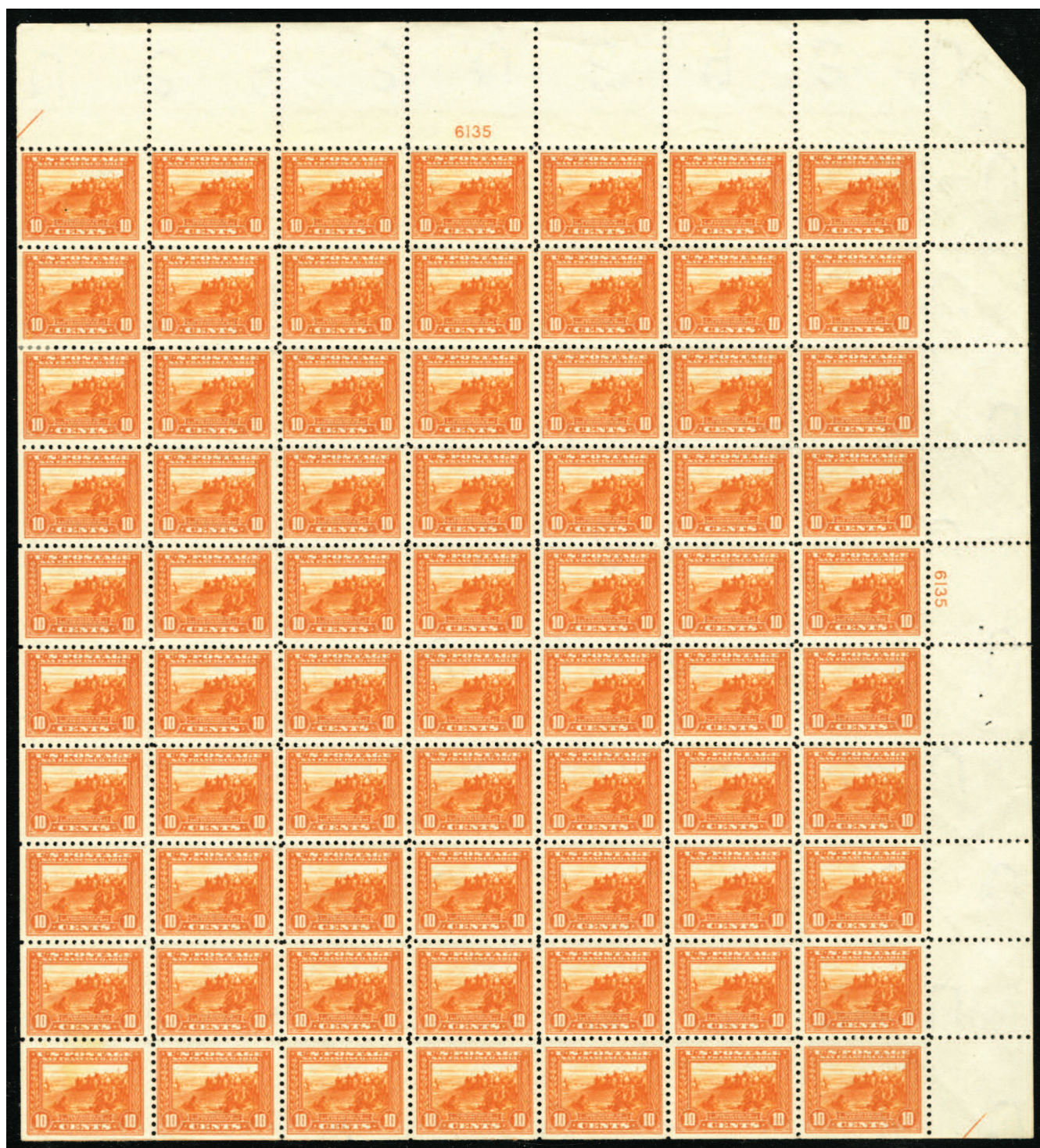


2040 ★★田 1914 Perf. 10, 1c green, sheet of 70, with Plate No.6985 at top and at right, n.h. except at right selvage (affecting the Plate Block), some gum skips, clipped upper right corner of the selvage, also staple holes in right margin at middle, fresh and fine-v.f., cat. \$4,780(401)

750.00



2041 ★/★★田 1914 Perf. 10, 5c blue, sheet of 70, with Plate No.6133 at top and at right, n.h. except four stamps at bottom hinged, incredibly fresh, fine-v.f., rare sheet, cat. \$33,850(403) 10,000.00



2042 ★/★★田 Perf.10, 10c orange, sheet of 70, with Plate No.6135 at top and at right, n.h. except tiny hinge, perf. strengthening between two stamps at left (pos.8 and 15), tiny perf. dimple at right (pos.28), incredibly fresh, clipped corner of the selvage at upper right and staple holes in right margin at middle, fresh and fine-v.f., rare sheet, one of perhaps only two known, cat. \$130,900.....(404) 50,000.00

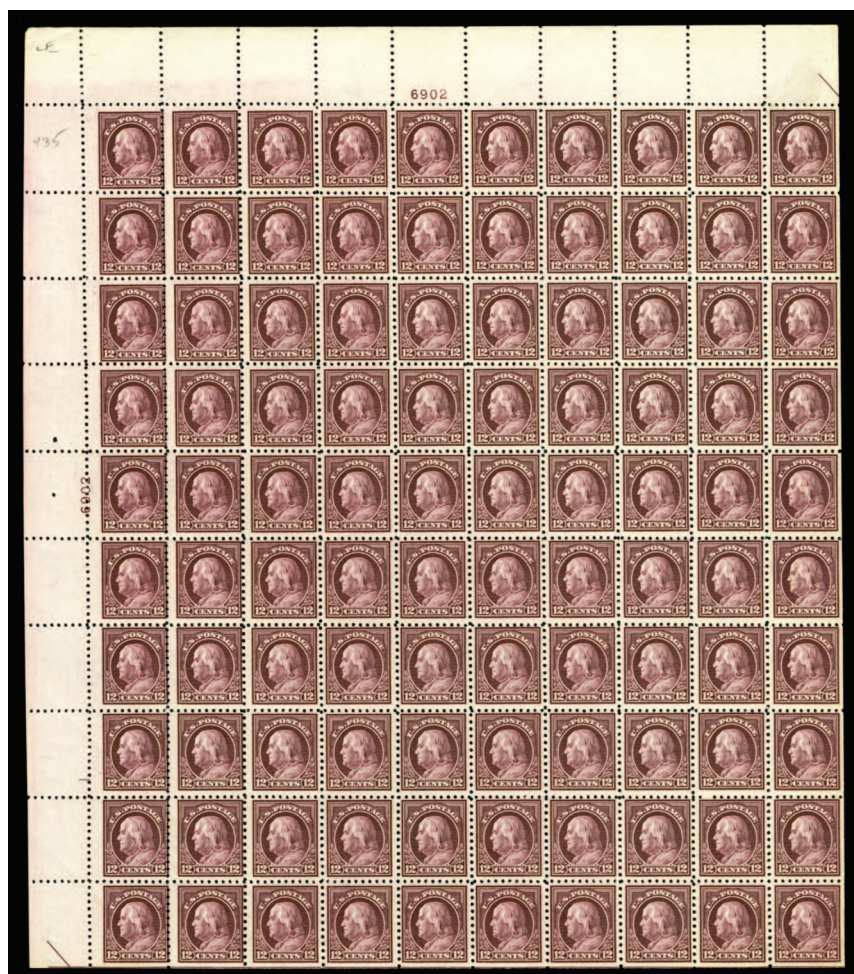


2043 ★田

1914 10c orange, Top Plate No. 6130 block of six, middle stamps and selvage with hinge remnants, other stamps n.h., exceptionally well centered, v.f., cat. \$10,000(404)

2,500.00

1914-17 Issues



2044 ★★田

1914 12c claret brown, sheet of 100, Plate No.6902, n.h., staple holes at left margin, single toned speck on one stamp, otherwise very good to very fine, cat. \$6,690(435)

1,000.00

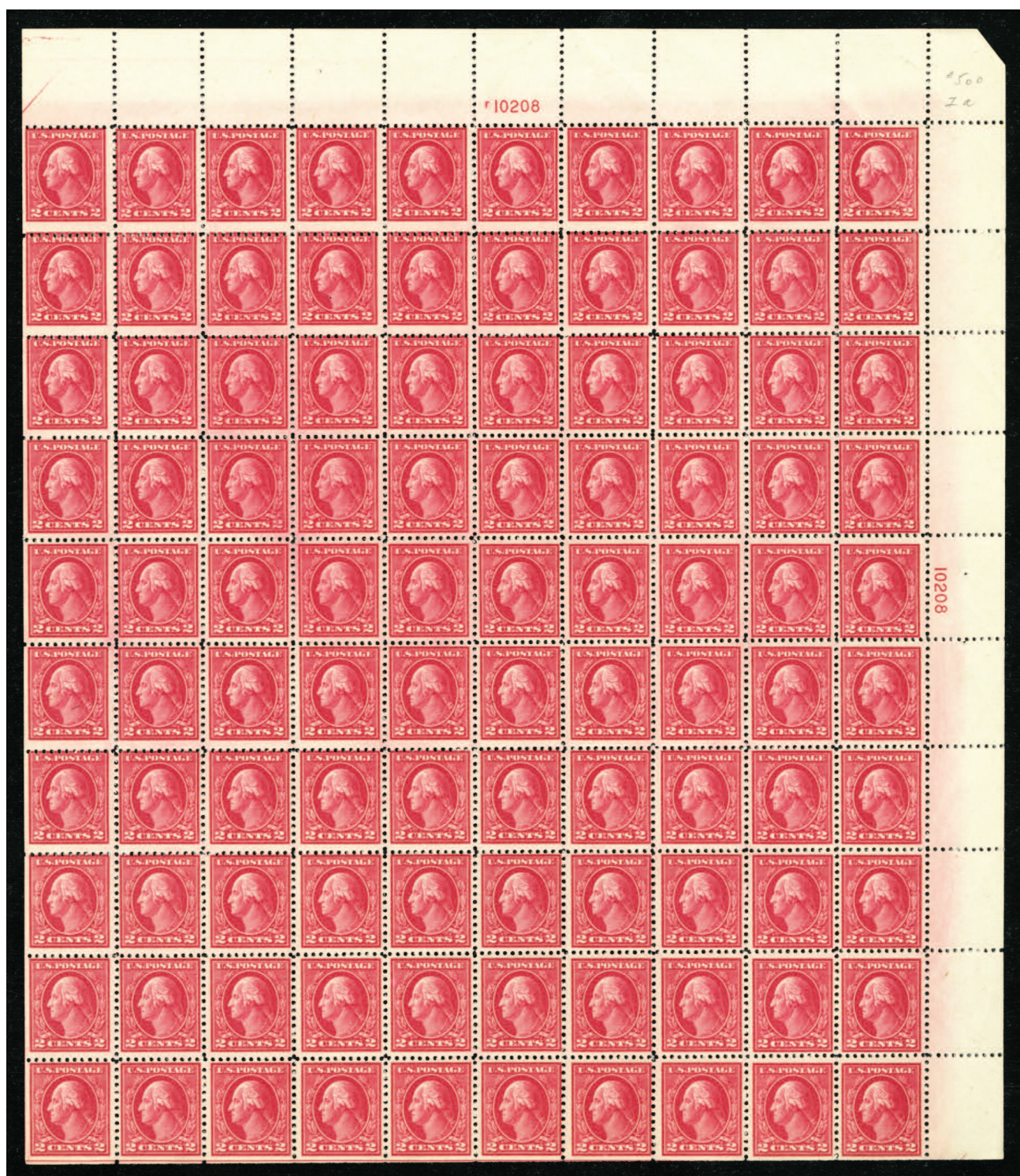
1917-29 Issues



2045 ★★田

1916 5c rose, double error in sheet of 2c, Plate No. 7642, left selvage missing, some h.r., error block is n.h., fine, cat. \$2,900.....(467)

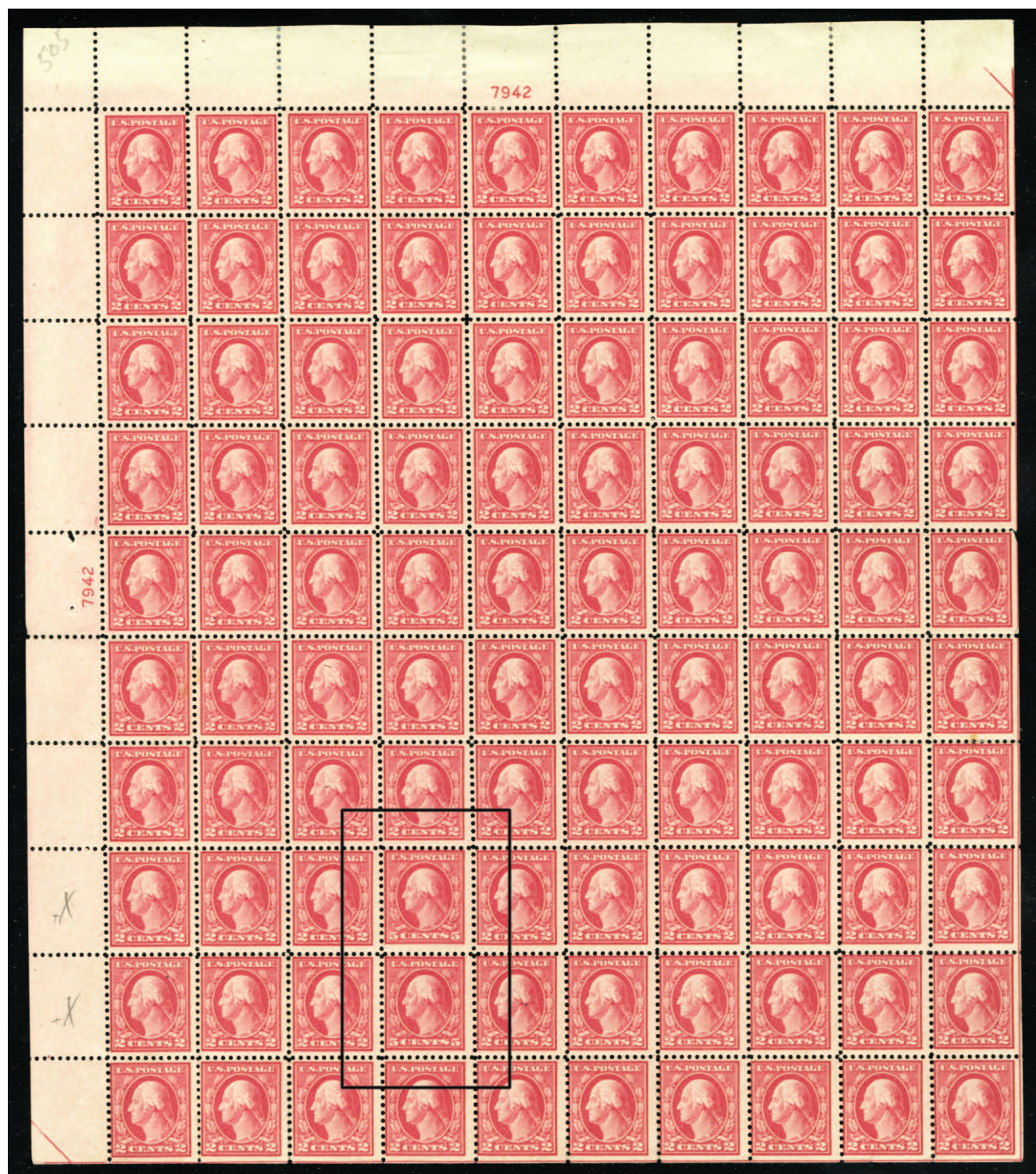
500.00



2046 ★★田

1917 2c deep rose, Type Ia, upper right sheet of 100, Plate No.10208, n.h. and post office fresh, centering from very good to very fine, tiny pencil notation at top right, rare intact sheet, catalogued as singles, cat. \$55,000.....(500)

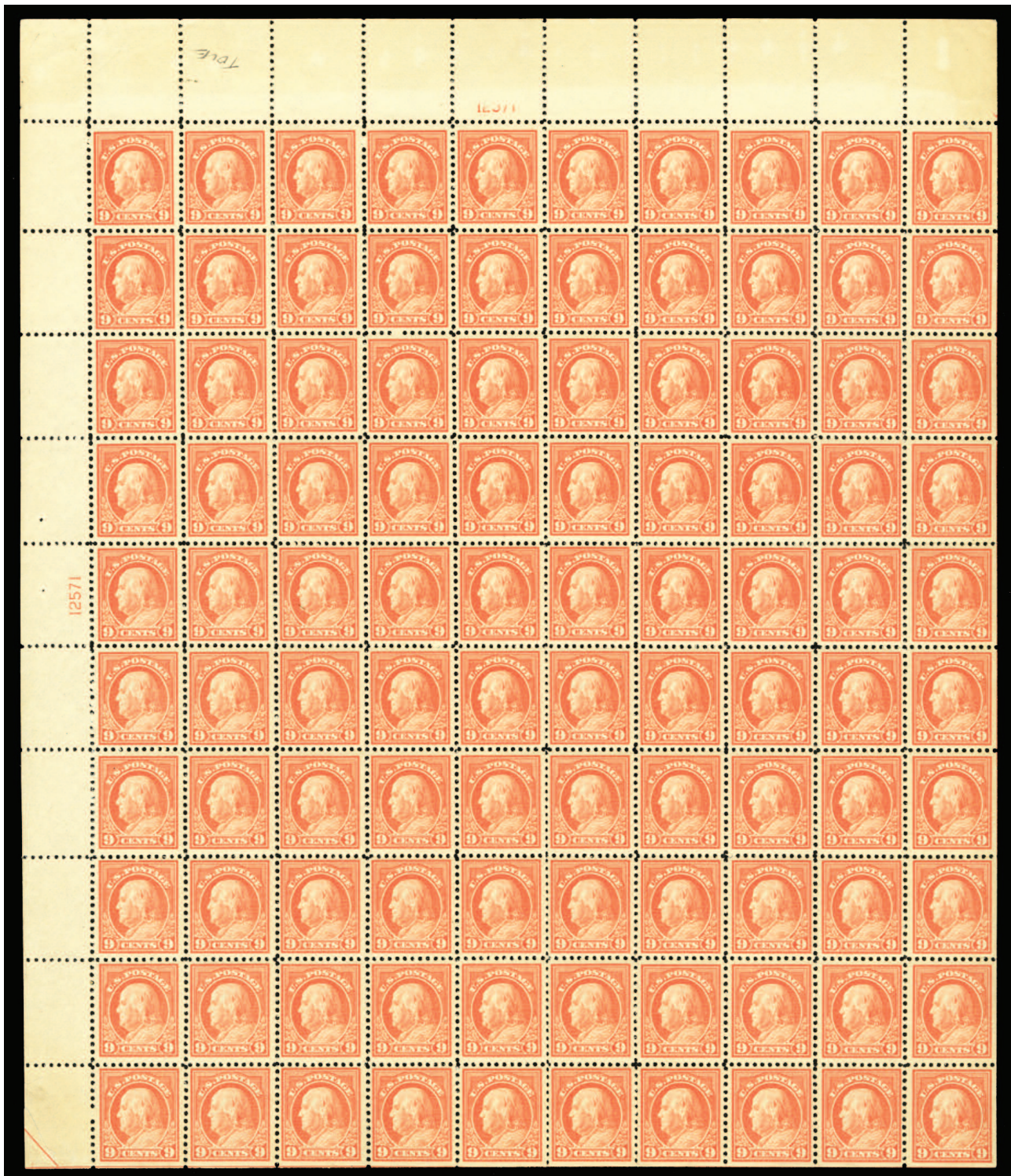
5,000.00



2047 ★★田

1917 5c rose, double error in sheet of 2c, Plate No. 7942, some h.r., few stamps with gum toning and perf. strengthening, all away from the error block, which is n.h., fine, cat. \$1,850(505)

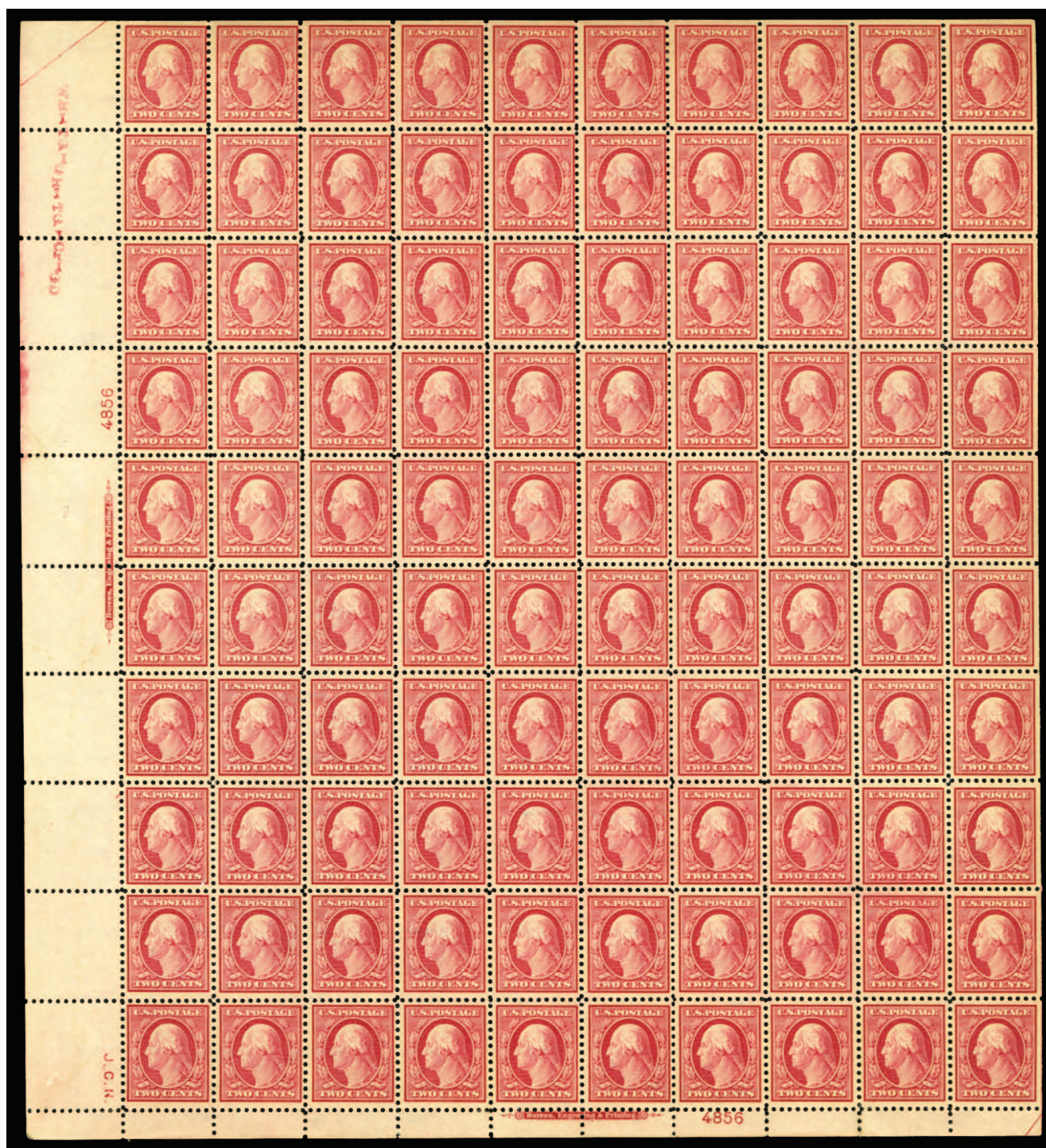
500.00



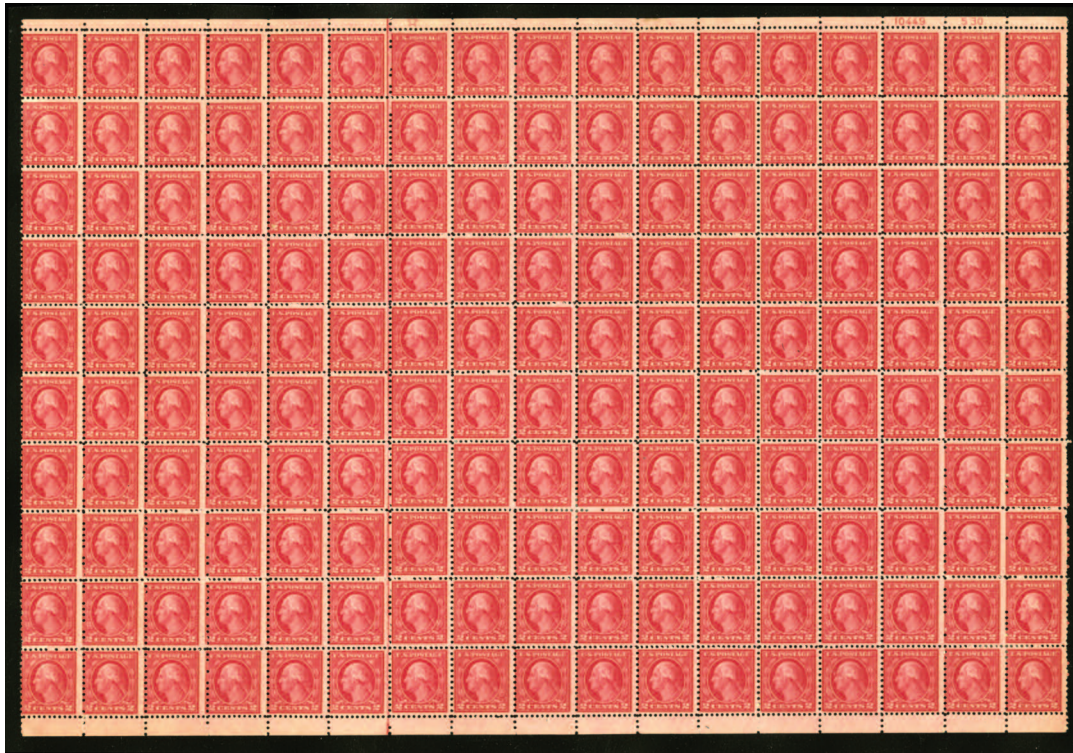
2048 ★★田

1917 9c salmon, upper left Plate No. 12571 sheet of 100, n.h., occasional wrinkles, fresh, fine-v.f.
sheet (catalogued as singles) cat. \$2,500(509)

500.00



- 2049 ★/★田 1917 2c sheet of 100, lower left Plate No.4856, folded vertically between stamps, tiny and sensible minute reinforcements along the top and right rows, also at bottom and margins, closed tear at outer left of the Plate Number, generally well centered, mostly n.h., fine-v.f., rare sheet (catalogued as 20 l.h. and 80 n.h. singles) (last offered at a 1979 Siegel Rarity Sale, lot 191, hammer \$20,000) cat. \$80,500.....(519) 25,000.00



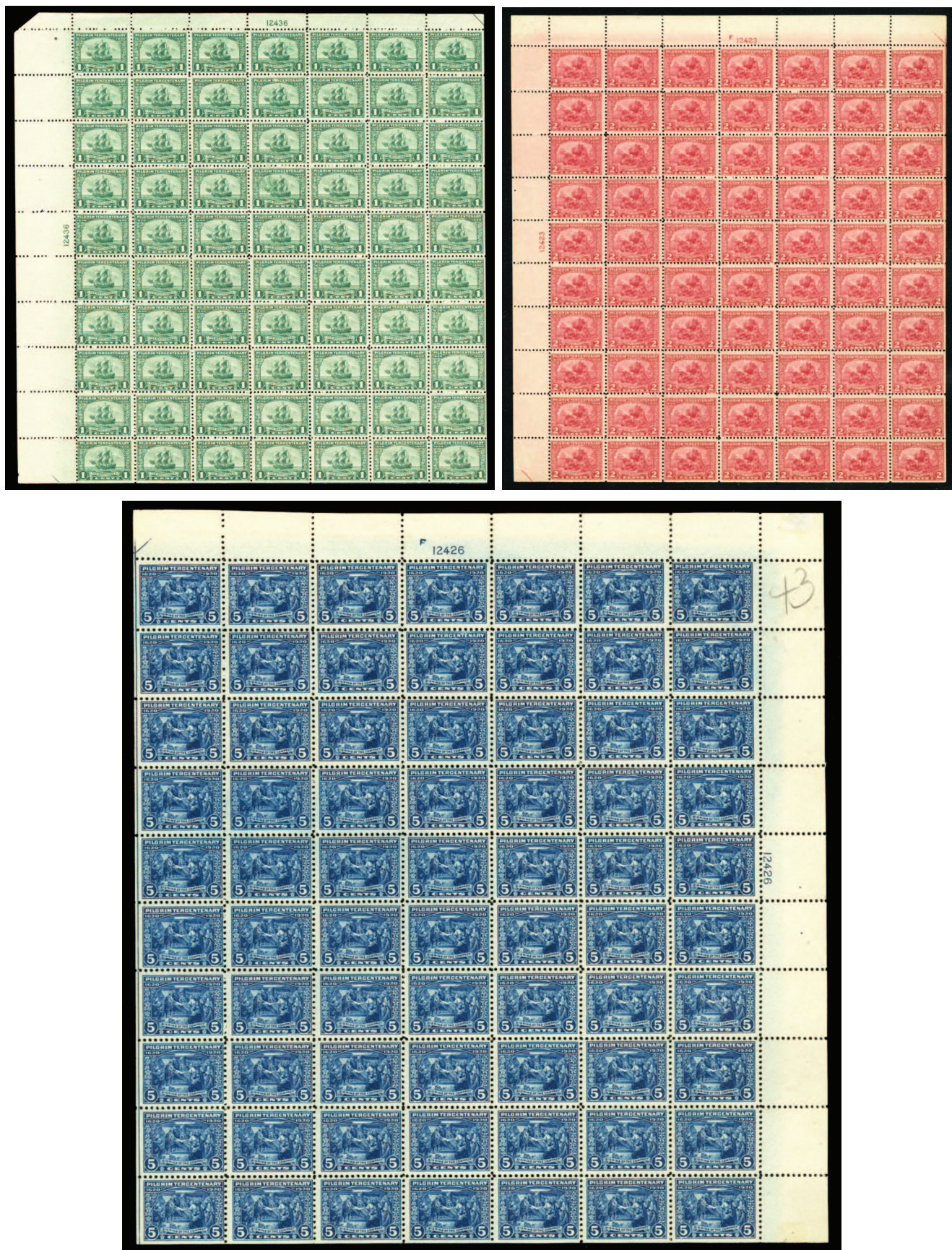
2050 ★/★★田 1919 Rotary Press Printing 2c carmine rose, sheet of 170, with Plate No.10449, S30 at top, centered very good to very fine as usual, perf. separations and hinge reinforcements affect about half of the stamps, balance n.h., rare sheet(540)

500.00



2051 ★/★★田 1919 Rotary Press Printing 3c violet, sheet of 170, with Plate No.9133 at top, some hinge reinforcements affect about 25 stamps, one with small hinge thin, others n.h., some discoloration, otherwise fine-v.f., cat. \$15,500(541)

3,500.00

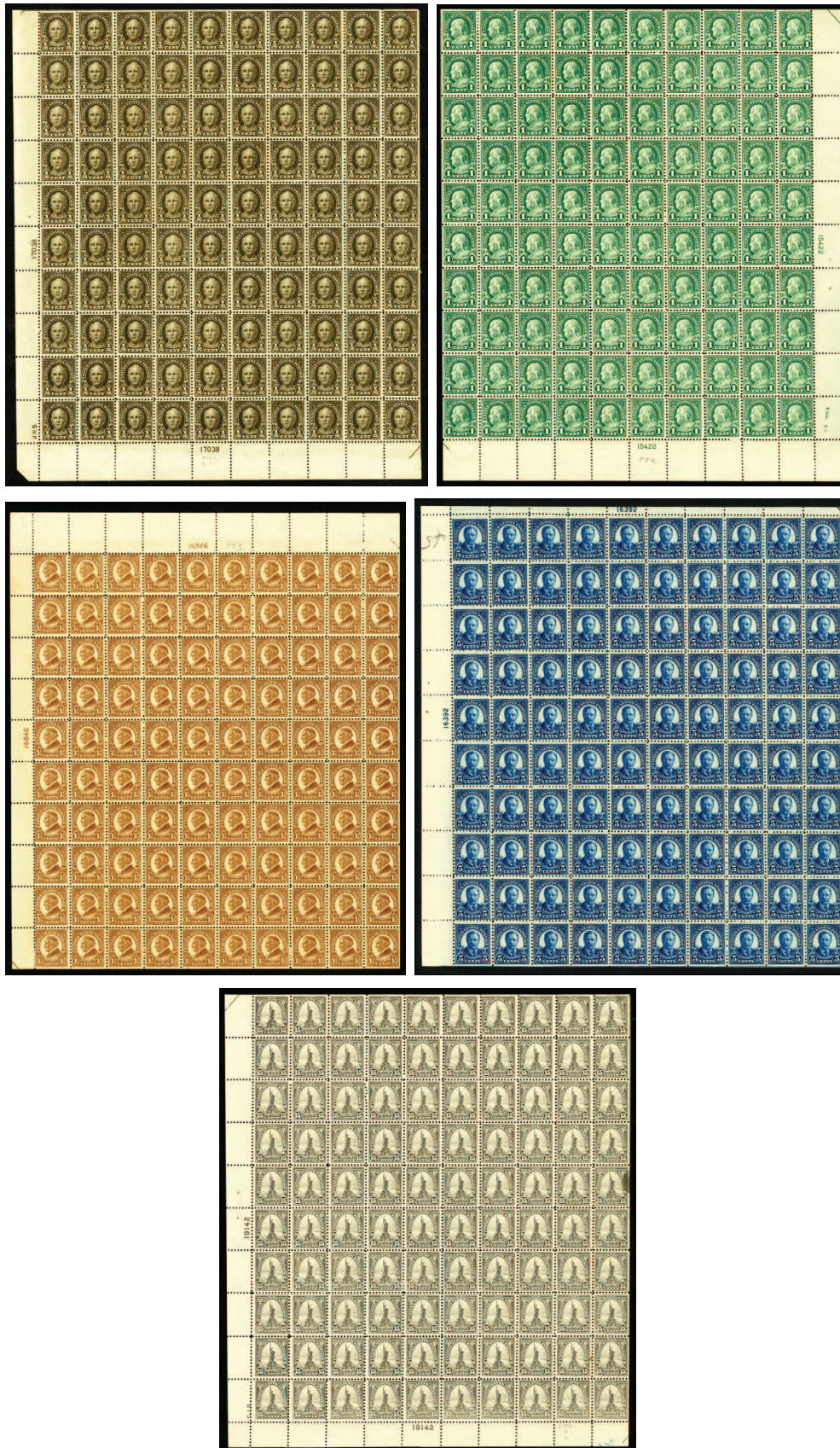


2052 ★★田

1920 Pilgrim Tercentenary Issue, 1c-5c sheets of 70, n.h., 2c with hinge marks at the ungummed portion of the top selvage, fresh, fine-v.f., cat. \$7,500

(548-50)

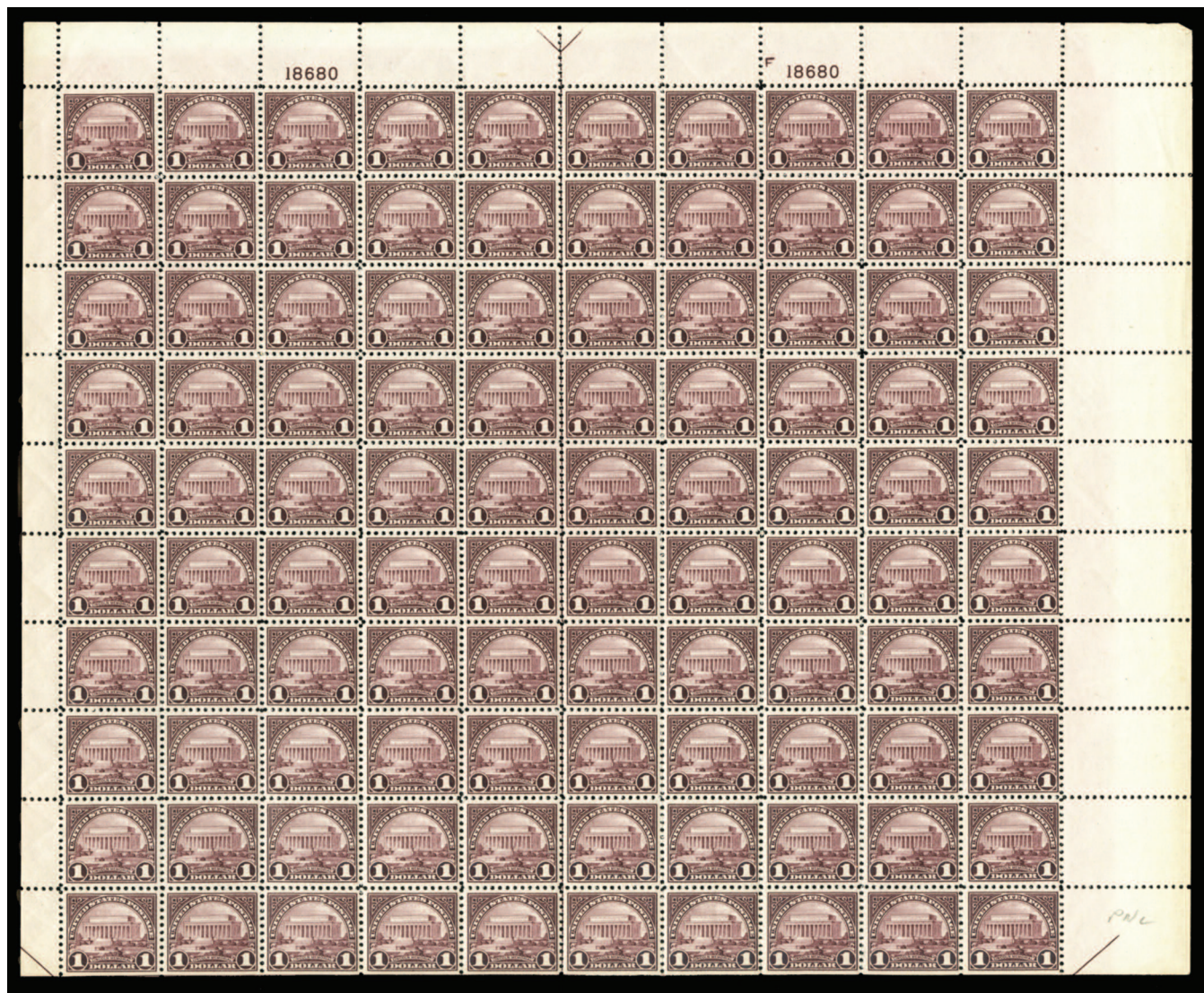
1,500.00



2053 ★★田

1922 Regular Issue, Flat Press Printing, ½c, 1c, 1½c, 5c and 15c, five different sheets of 100, few stamps l.h., last soiling spot affecting one stamp, also some minor toned spots, rest n.h., mostly fine-v.f. (catalogued as singles) cat. \$7,735(551,552,553,557,566)

1,500.00



2054 ★★田

1923 \$1 Lincoln Memorial, sheet of 100, n.h., couple of natural skips or irregularities, fresh and well centered, fine-v.f. (catalogued as singles) cat. \$7,500.....(571)

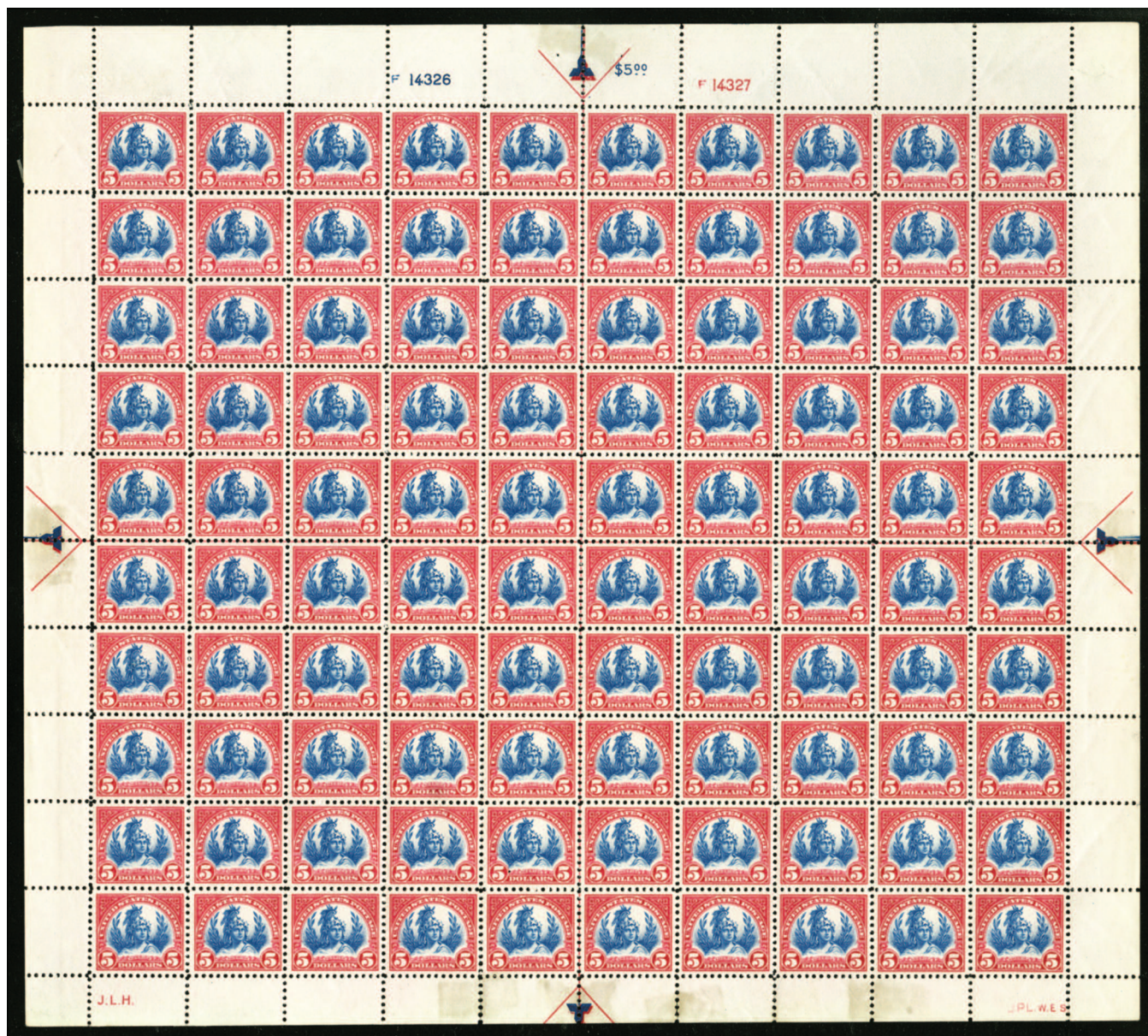
2,500.00



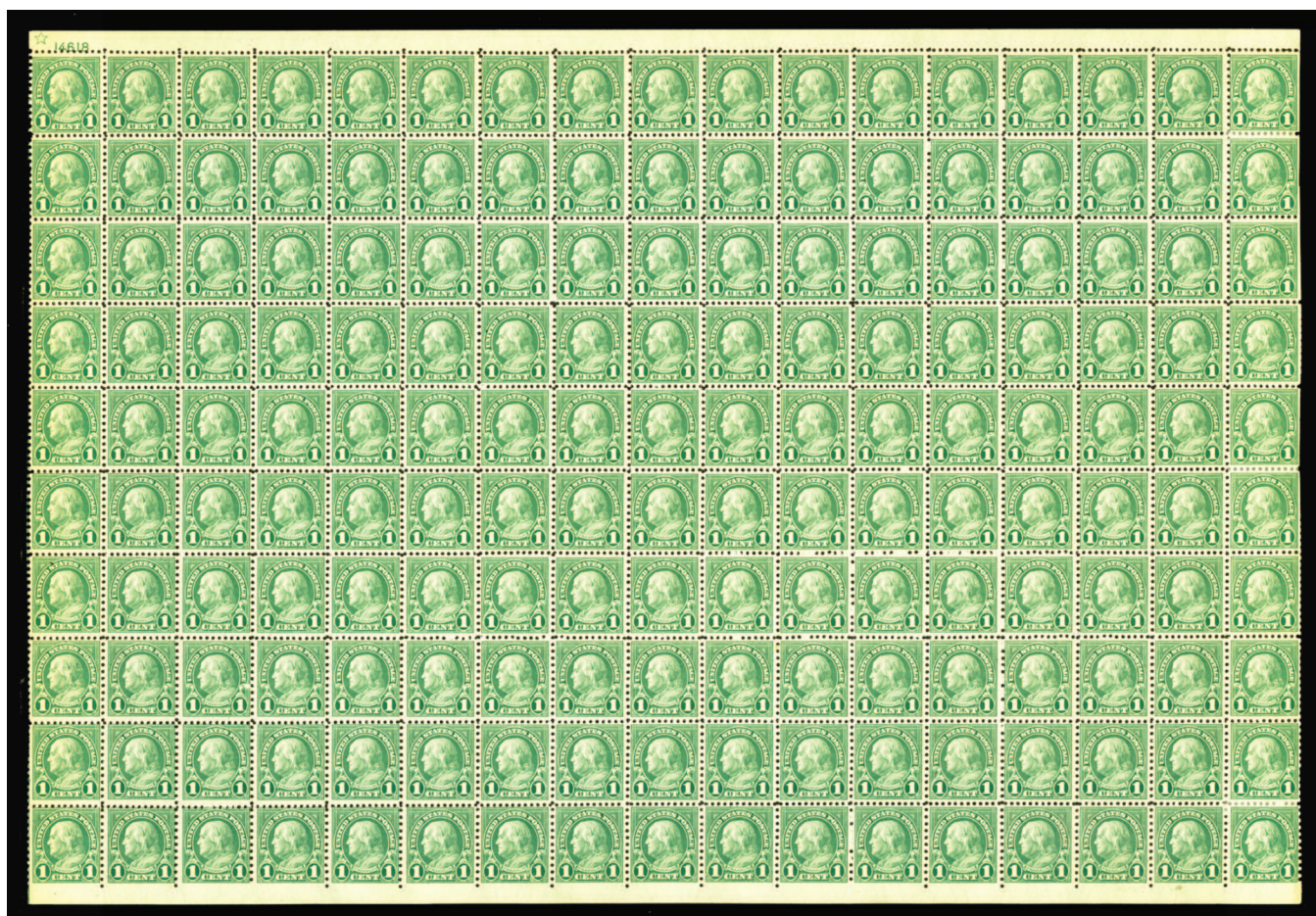
2055 ★★田

1923 \$2 United States Capital, sheet of 100, n.h., couple of opened perfs and minute soiling at left, well centered, fine-v.f. (catalogued as singles) cat. \$12,000.....(572)

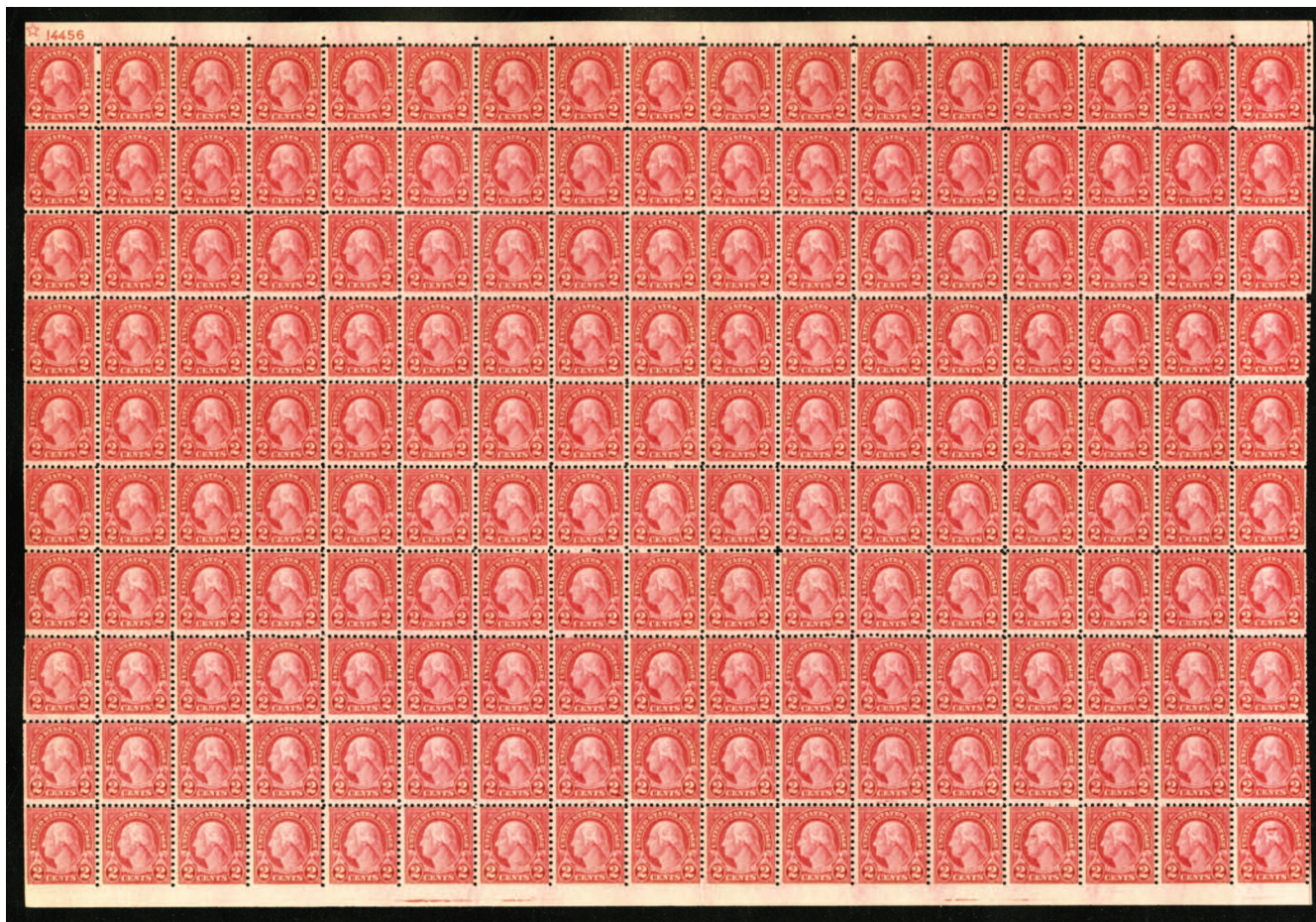
2,500.00



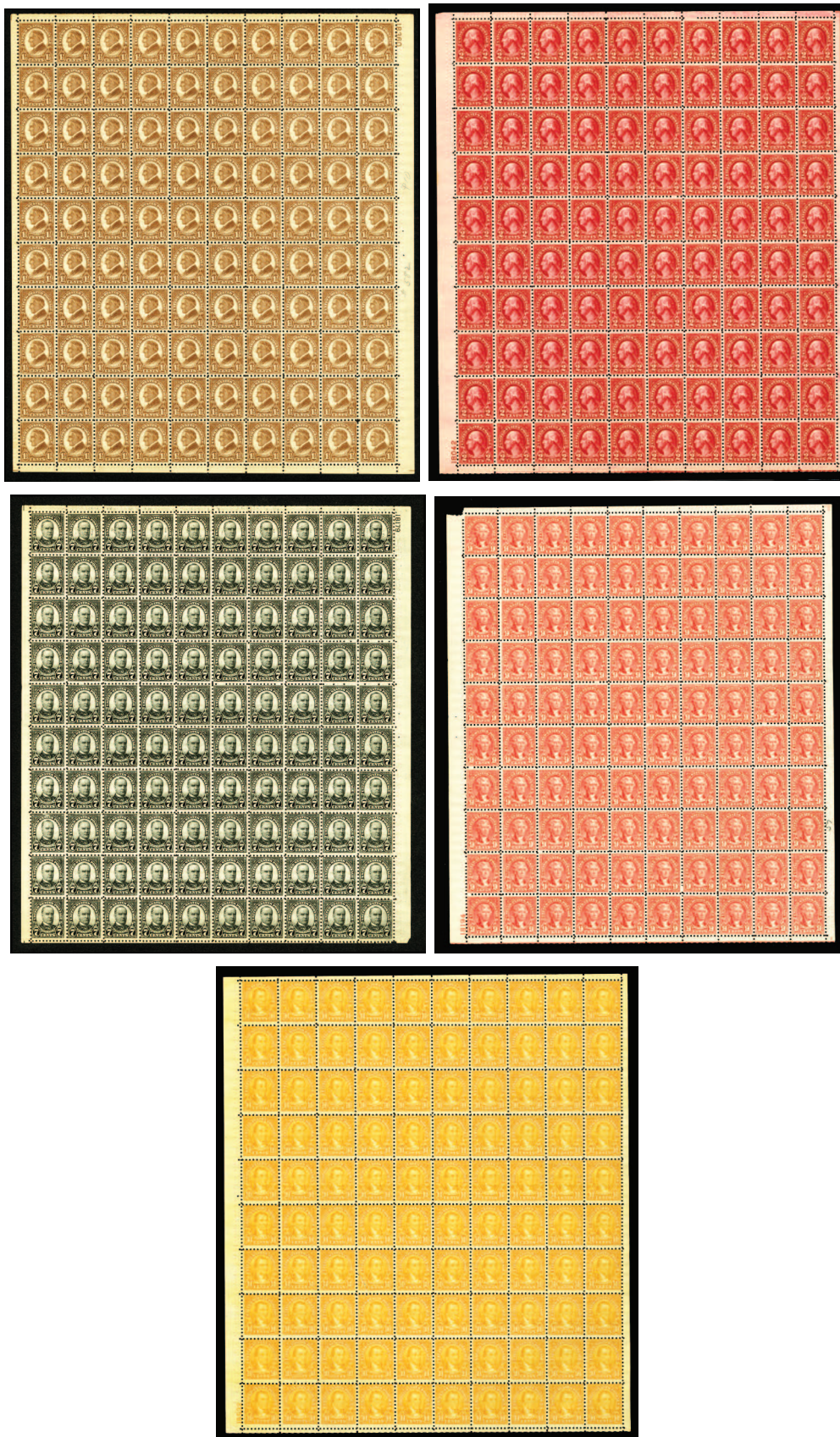
- 2056 ★★田 1923 \$5 liberty sheet of 100, n.h., with natural gum creases and occasional gum skip or thin specks, slightly oily hinge marks removed from margins on all four sides, away from the stamps except affecting a few at bottom, well centered, fine-v.f.(573) 10,000.00



- 2057 ★/★★田 1923 Rotary Press perf. 11x10, 1c green, sheet of 170, with Plate No.14618 and Star at upper left, some minor perf. strengthening at top and along the right row, with straight edge or clipped perfs, completely imperf. at bottom, other stamps n.h., fine-v.f., rare sheet, cat. \$25,150(578) 7,500.00



- 2058 ★★田 1923 Rotary Press perf. 11x10, 2c carmine, sheet of 170, with Plate No.14456 and Star at upper left, some stamps with clipped perfs at right, completely imperf. at bottom, n.h., fine-v.f., rare sheet, cat. \$24,140(579) 5,000.00



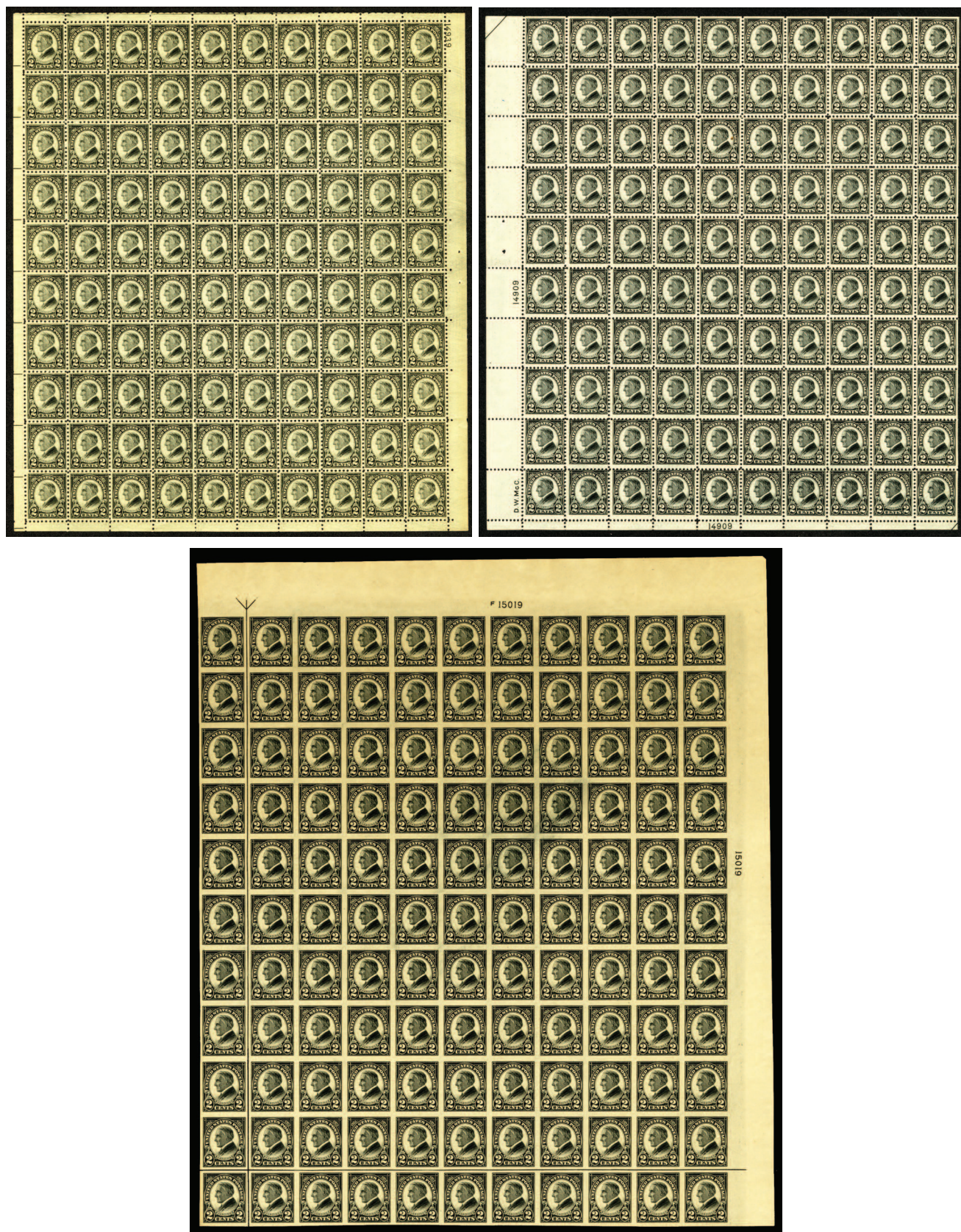
2059 ★★田

1923 Rotary Press, Perf. 10, 1½c brown, 2c carmine, 7c black, 9c rose and 10c orange, sheets of 100, n.h., 9c with tiny piece of selvage missing at upper left, fresh, fine-v.f., cat. \$15,181
.....(582,583,588,590,591)

5,000.00



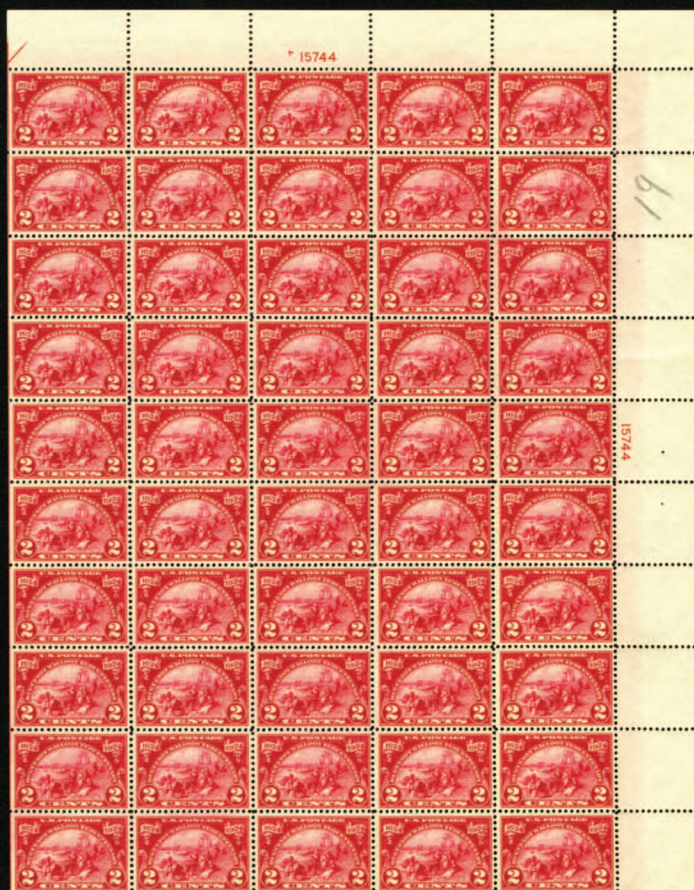
- 2060 ★/★★田 1923 2c carmine, Rotary Perf. 11, complete sheet of 100, Plate No.14705 and Star, ten stamps hinged, balance never hinged, some clipped perfs and irregular selvage, rich color and detailed impression, usual centering, fresh, mostly fine or better. A very rare sheet, possibly the only known still extant, cat. \$44,100(595) 7,500.00

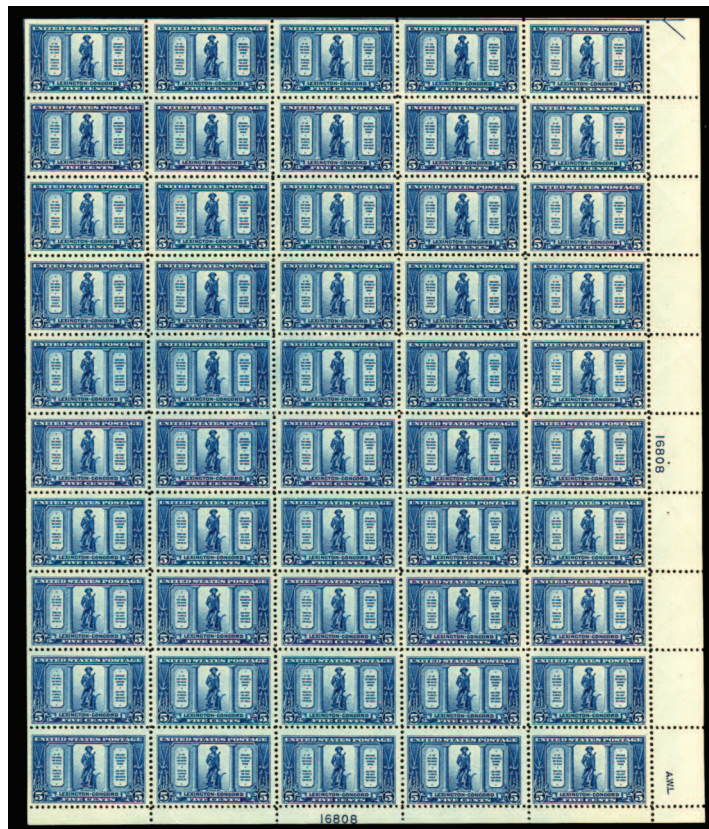


2061 ★★田

1923 Harding Memorial Issue, 2c black perf. 11, perf. 10 and imperf., sheets of 100, except last one is a sheet of 121, stamps n.h. (perf. 10 l.h. in selvage along the plate number), one of the imperfs with a small gum thin, fresh, fine-v.f. (catalogued as singles, without premium added for plate blocks) cat. \$4,430.....(610-12)

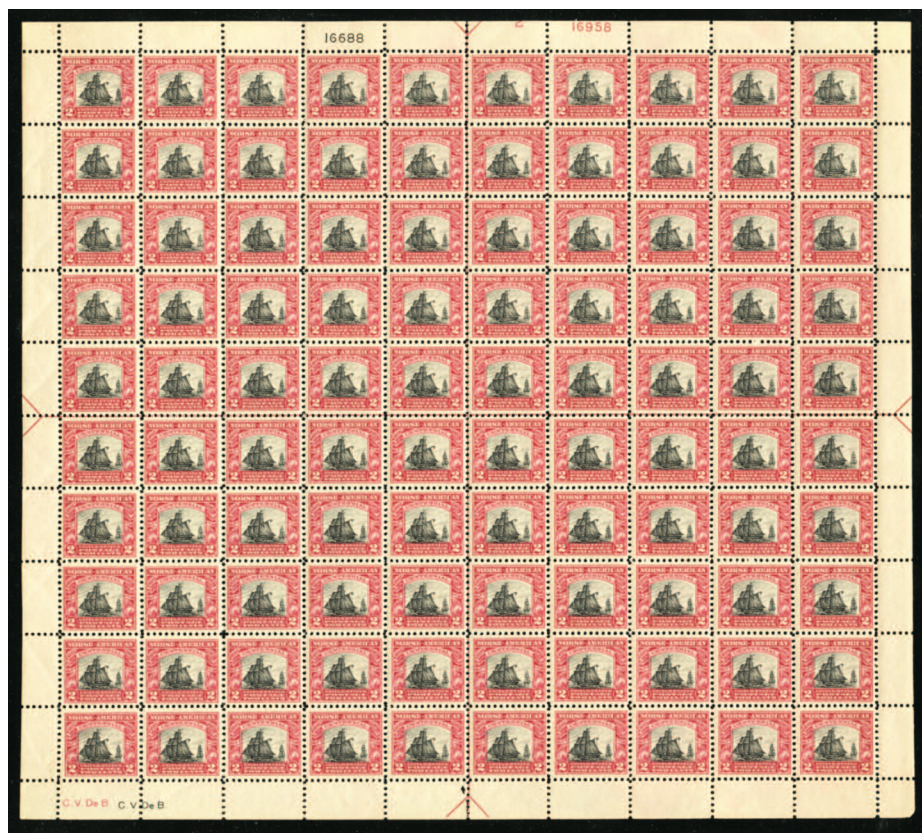
750.00





2062 ★★田 1924-25 Huguenot Walloon and Lexington Concord, sheets of 50, n.h., fine-v.f., cat. \$4,645.....
.....(614-19)

750.00

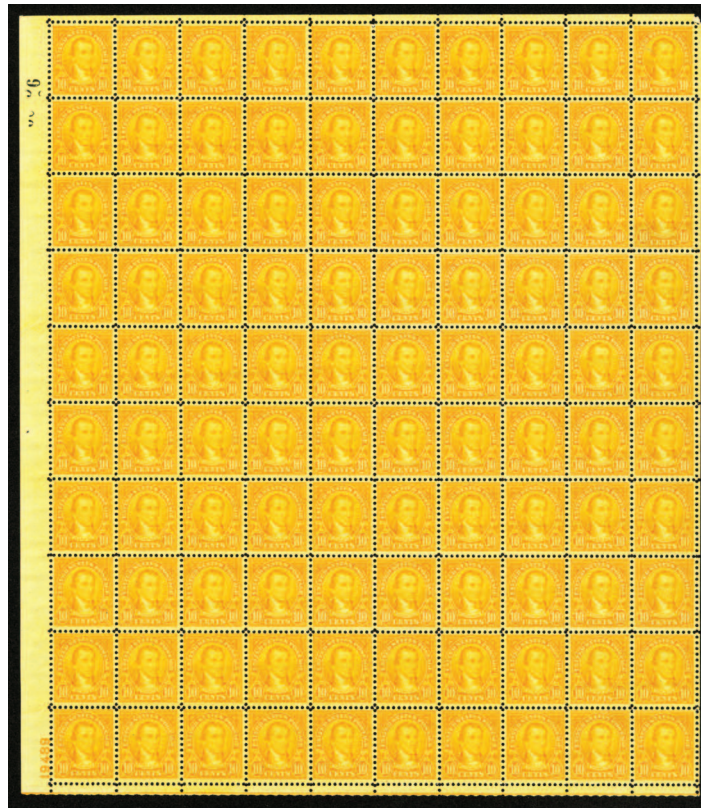


2063 ★★田

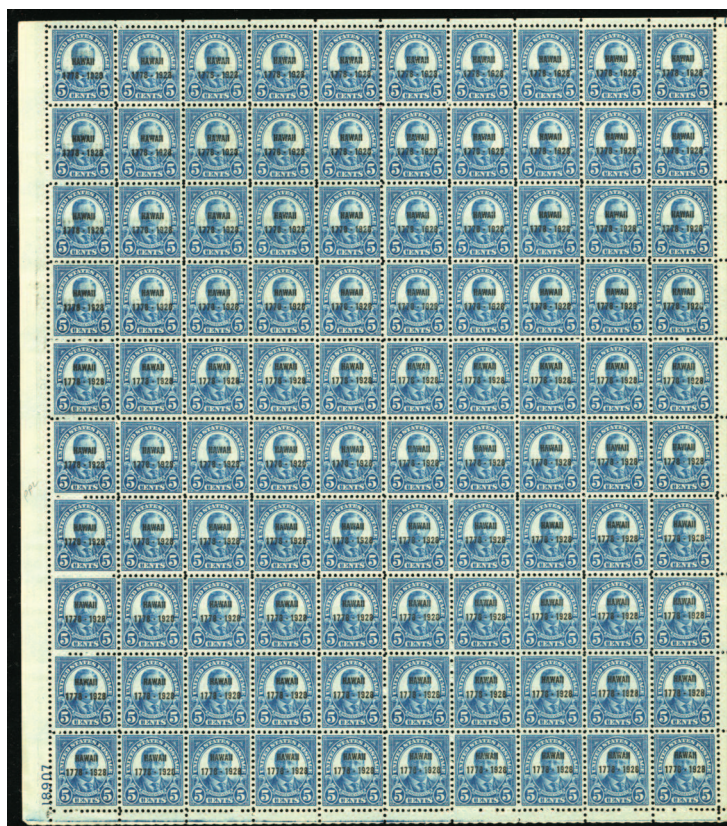
1925 Norse-American Issue, 2c and 5c sheets of 100, n.h., fresh and well centered, fine-v.f., cat.
\$3,275

(620-21)

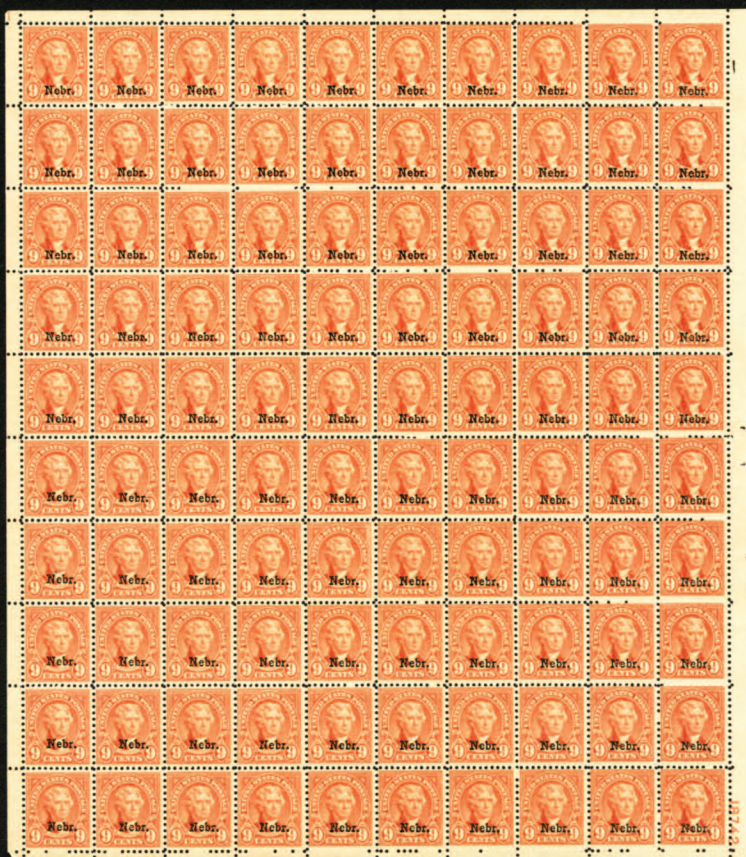
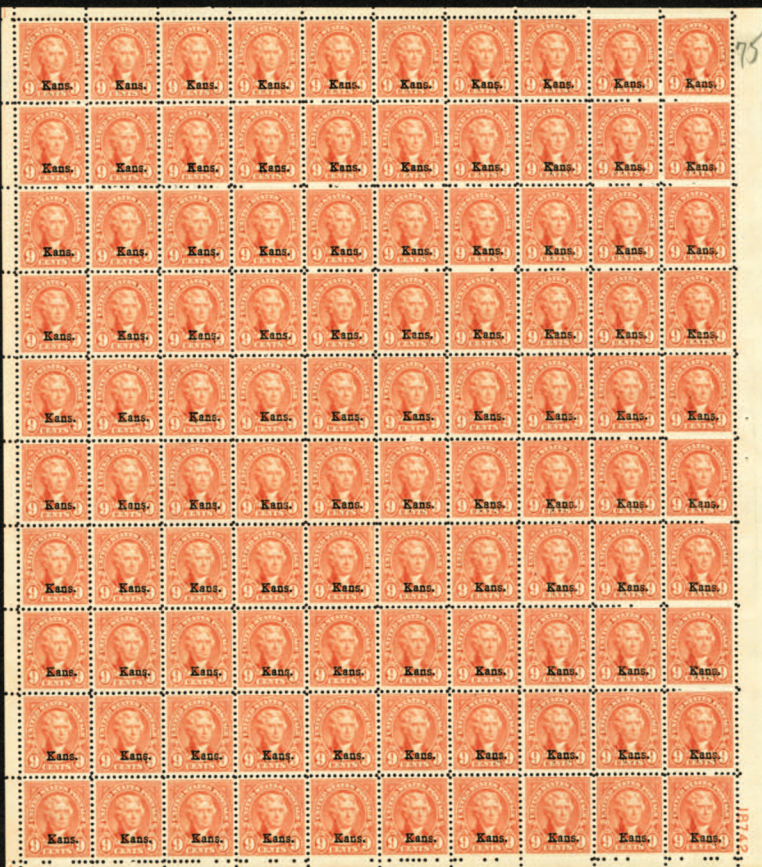
1,000.00

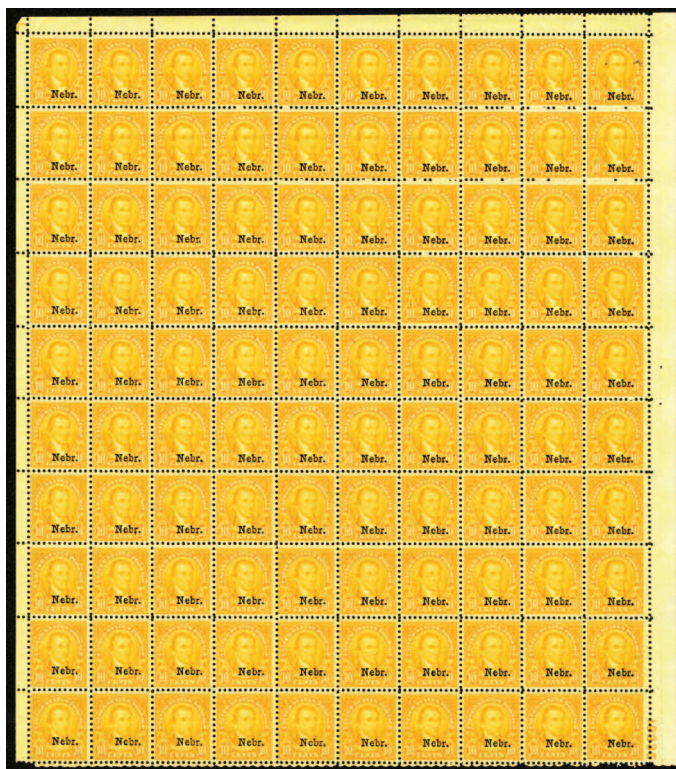
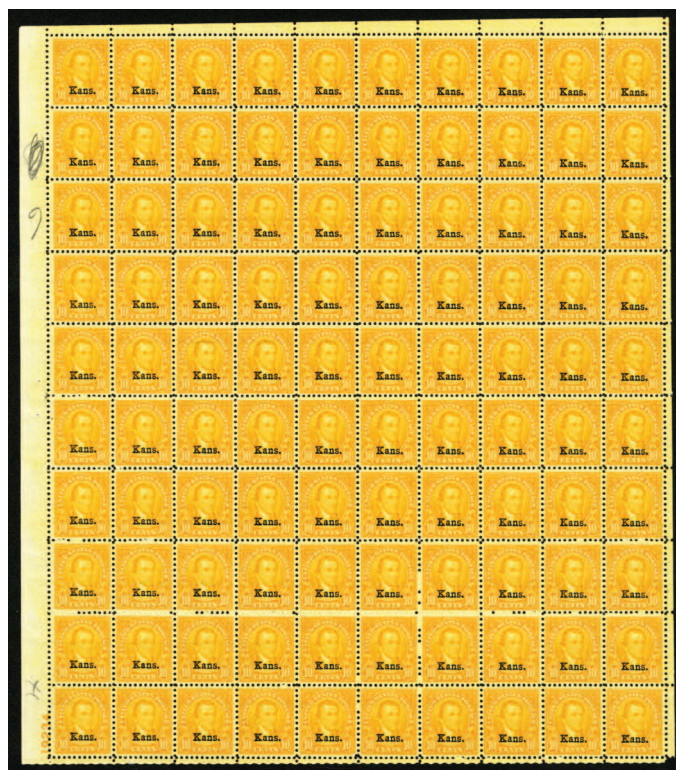


- 2064 ★★田 1926-34 Rotary Press Perf. 11x10½, 1c-10c sheets of 100, couple of minor gum disturbances noted, n.h., fresh, fine-v.f. set of sheets (catalogued as singles) cat. \$2,800.....(632-34,635-42) 500.00



- 2065 ★★田 1928 Hawaii, 2c and 5c sheets of 100, well centered, n.h., fine-v.f., cat. \$3,315.....(647-48) 500.00



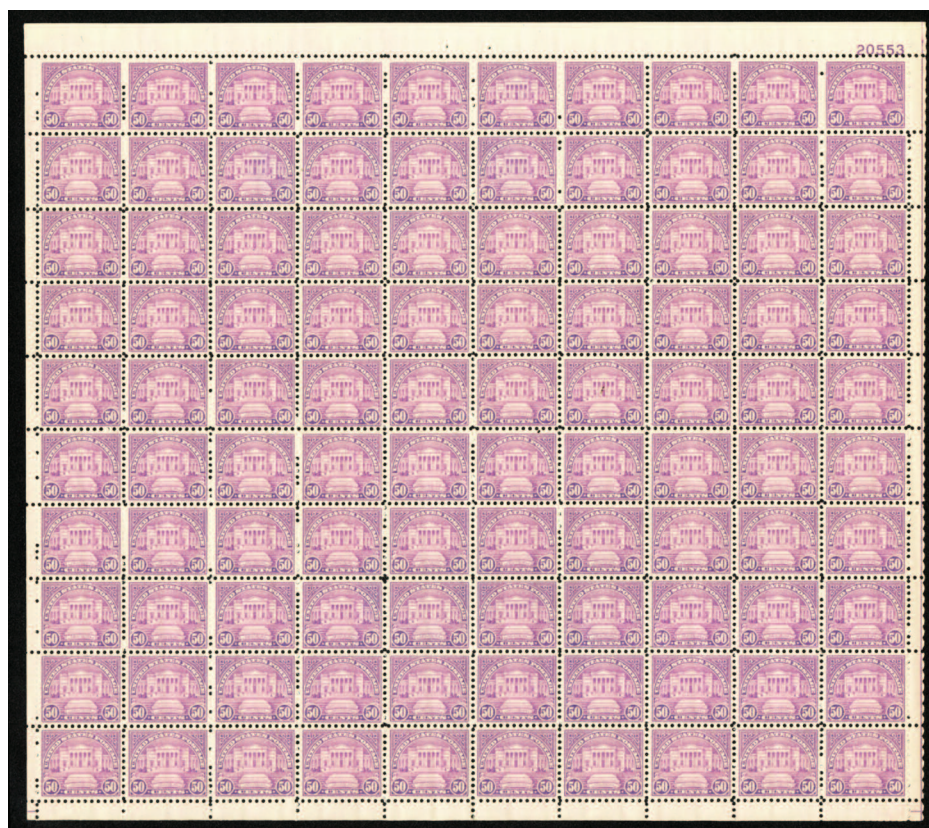
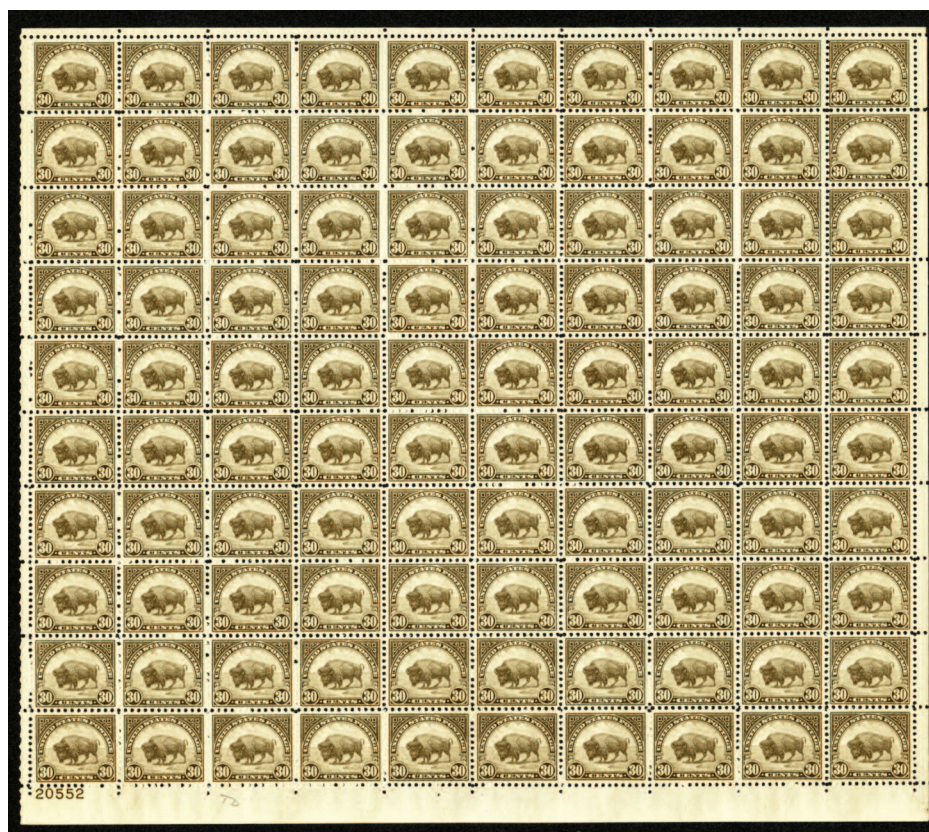


2066 ★★田

1929 1c-10c Kansas, Nebraska overprints, complete set of sheets of 100, all of the Kansas stamps are never hinged, eight of 1c, 2c and 10c each of Nebraska stamps are hinged, other 92 stamps are never hinged, some with pencil notations on selvages, some usual centering, but the vast majority of stamps are fine-v.f., or better. A very rare set of one of the finest quality surviving sets of the Kansas-Nebraska sheets. With the demand for choice Kansas-Nebraska singles, sets and Plate Blocks, opportunities to acquire a complete set of sheets in the future will be rather difficult (last recorded auction realization was in a Siegel Rarity Sale in 2006, with \$47,500 hammer) cat. \$101,337.....(656-79)

25,000.00

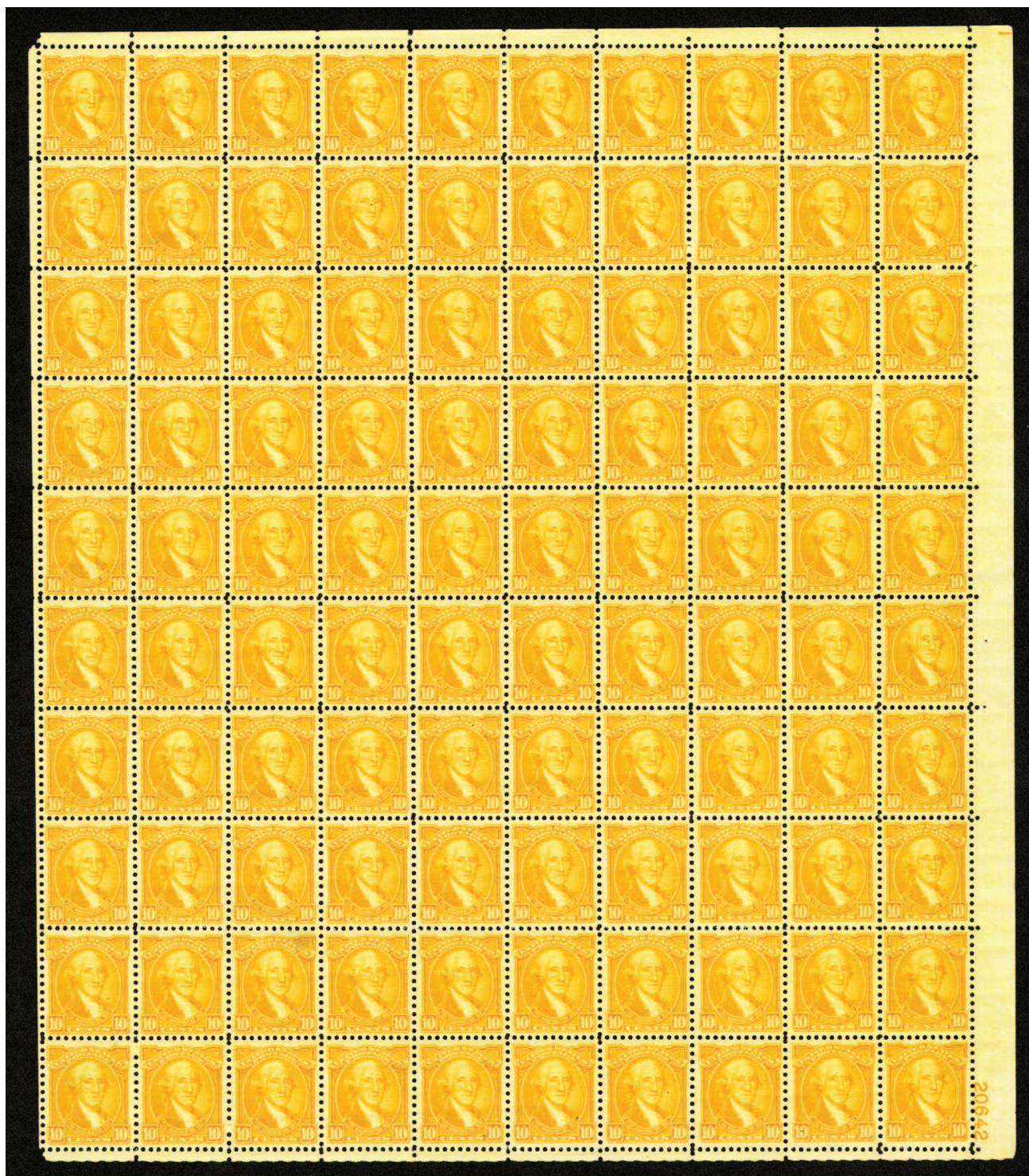
1930-32 Issues



2067 ★★田

1931 11c-50c Rotary Press Issue, complete set of sheets of 100, n.h., bright colors, fresh and fine-v.f. A rare set of sheets, cat. \$14,240(692-701)

4,000.00



2068 ★★田 1932 Washington Bicentennial Issue, ½c-10c complete set of sheets of 100, n.h., fresh, well centered, fine-v.f., cat. \$3,468(704-15) 750.00

Air Post



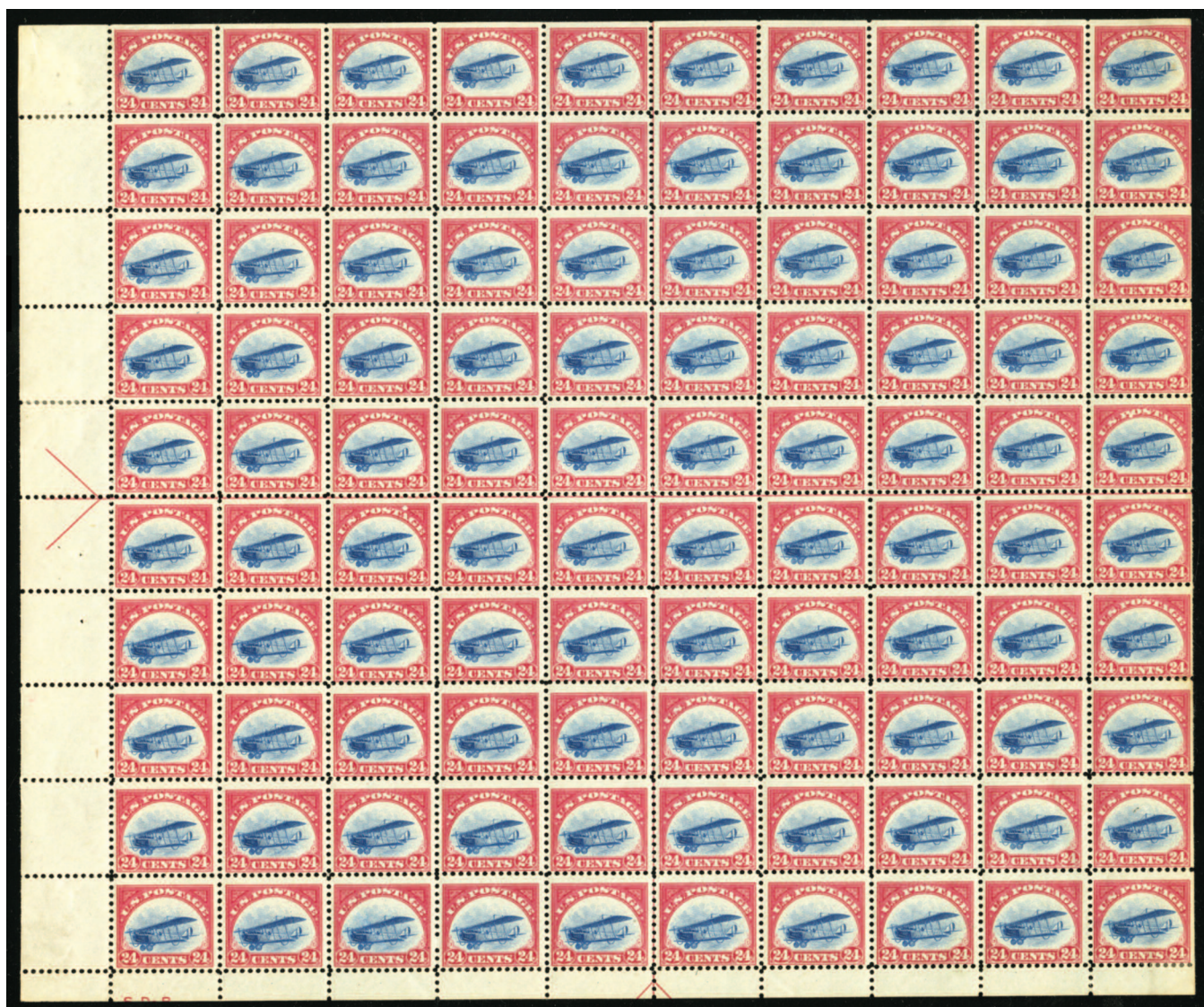
2069 ★★田

1918 6c orange, sheet of 100, n.h., upper left stamp defective, two others with small thins, marginal fault at top, away from the plate block, slight oxidation at top of the two arrow stamps, otherwise fresh color and many exceptionally well centered stamps (catalogued as singles) cat. \$11,000 ..(C1)

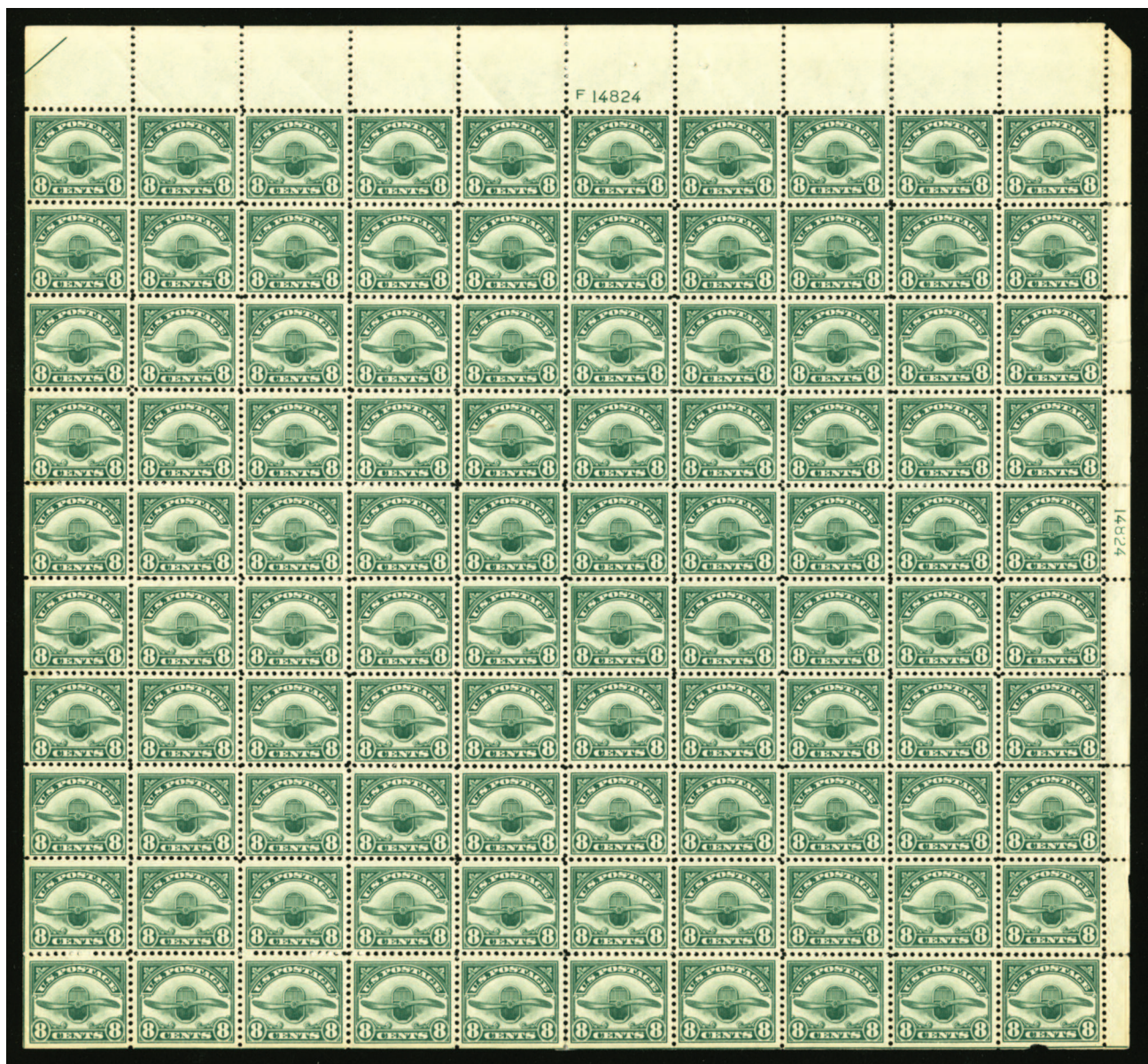
3,000.00



2070 ★★田 1918 16c green, sheet of 100, n.h., fresh, many exceptionally well centered stamps, fine-v.f. and scarce sheet (catalogued as singles) cat. \$12,000(C2) 5,000.00



2071 ★/★★田 1918 24c carmine rose & blue, sheet of 100, selvage trimmed at bottom, four stamps hinged (three at left, one at top), balance n.h., fresh, generally fine, scarce sheet (catalogued as singles) cat. \$13,000(C3) 2,500.00



2072 ★★田

1923 8c green, sheet of 100, n.h., some perf. strengthening along the edges at right, last stamp
nicked at bottom, others well centered, many v.f. or better (catalogued as singles) cat. \$3,500..(C4)

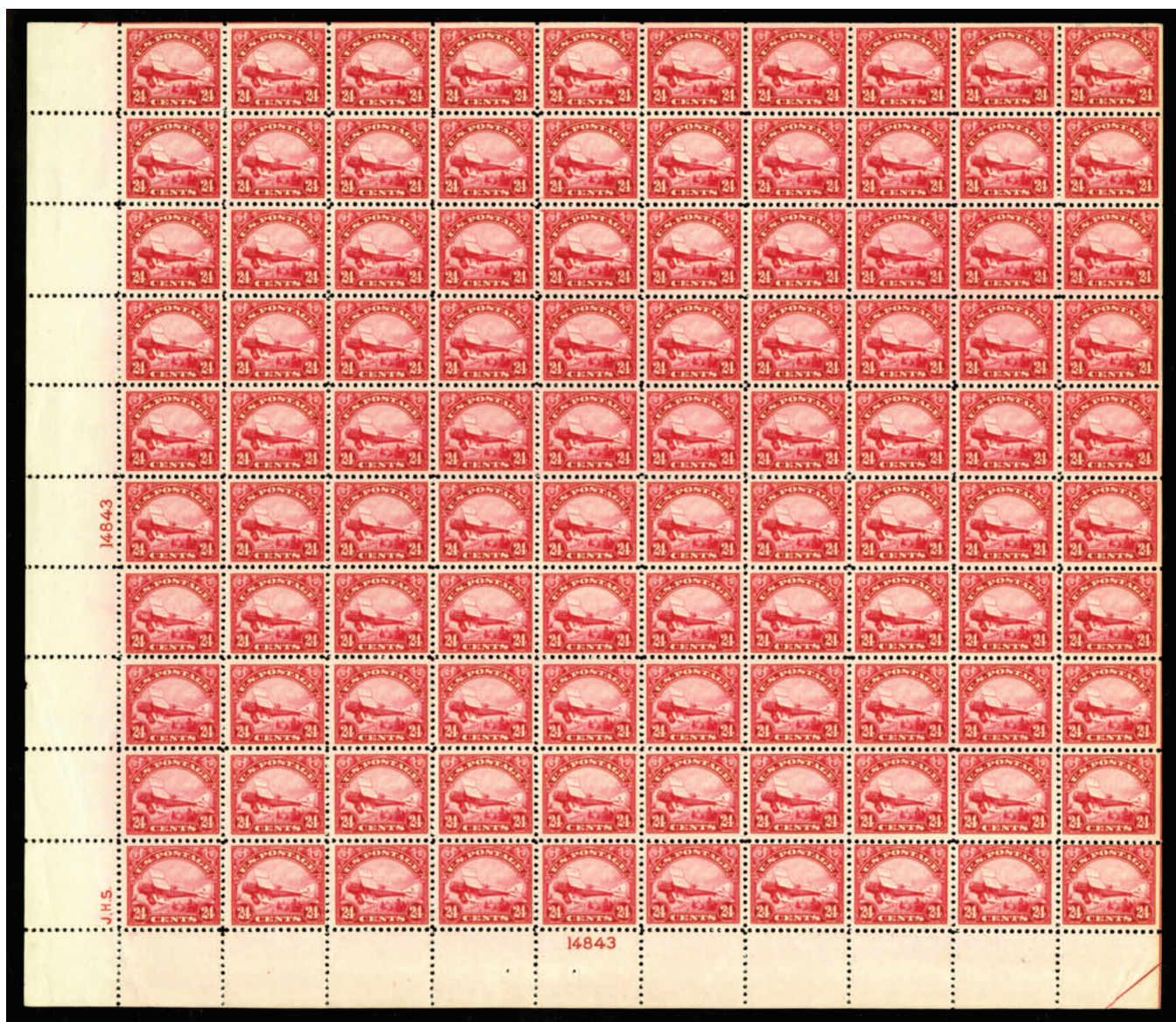
1,000.00



2073 ★★田

1923 16c dark blue, sheet of 100, n.h., fresh and mostly well centered, fine-v.f., rare intact sheet in excellent condition (catalogued as singles) cat. \$12,000.....(C5)

5,000.00



2074 ★★田

1923 24c carmine, sheet of 100, n.h., fresh and mostly well centered, fine-v.f., rare intact sheet in excellent condition (catalogued as singles) cat. \$13,000.....(C6)

5,000.00

20077

20077



20088

20088





2075 ★★田 1930 Zeppelin Issue 65c-\$2.60 sheets of 50, well centered, mostly n.h., each sheet with a couple of thin spots, l.h. in margins away from the stamps, few hinge reinforced and occasional perf. telescoping, fresh and mostly v.f. set of Zeppelin sheets(C13-15) 100,000.00



2076 ★★田 1933 Century of Progress, 50c green, sheet of 50, n.h., well centered, fresh and fine-v.f., cat. \$4,125(C18) 1,000.00

BALANCE OF THE COLLECTION

2077 ★★田 1909-80 balance of the New Amsterdam sheet collection, many hundreds, earliest items include imperf. 4c brown (Scott 346), perf. 2c Lincoln, Seward and Hudson Fulton, also imperf. of last (367,370,372,373), regular issue (426), Victory (537), also various other commemoratives, more or less complete from 1926 (starting with 627, excluding 704-15), low values of Kansas-Nebraska, Regular Issues (499,501), National parks, Overrun Nations, all 3c, 4c, 5c issues, etc., Presidentials to \$2, Famous Americans, 1954 Regular Issues to \$1, later to \$5 Moore and \$5 Candle, Air Post with C7-12,15-16,19-100, plus occasional odds and ends, mostly fine-v.f., stored in sheet albums and housed in three bankers' boxes (web photo) 10,000.00

END OF SALE - THANK YOU